

Research-Informed Design

Reimagine the Workday



Reimagine the Workday

Paradigm shifts in how work gets done are transforming the workplace.

Imagine a space that welcomes the new workday. Where ideas are born and innovation comes to life. A place that is always ready for what's next. By looking at things differently and discovering what brings out people's best, we're redefining the workplace and offering fresh perspectives that support the ways people want to work. So whether you like to work alone, together, or all the above, it's time to imagine something better.

Fast Forward

The Future of Work

In the wake of monumental change, there's never been a better time to challenge the familiar. To explore fresh ideas for how to make the workplace more adaptable and respond with flexible solutions that allow people to work in their own unique way. Work and workplace design are transforming—and we're thrilled to be paving the way.



A Balanced Approach for Mobile and On-Site



Giving People the Freedom of Choice



Promoting Healthy Workplace Practices



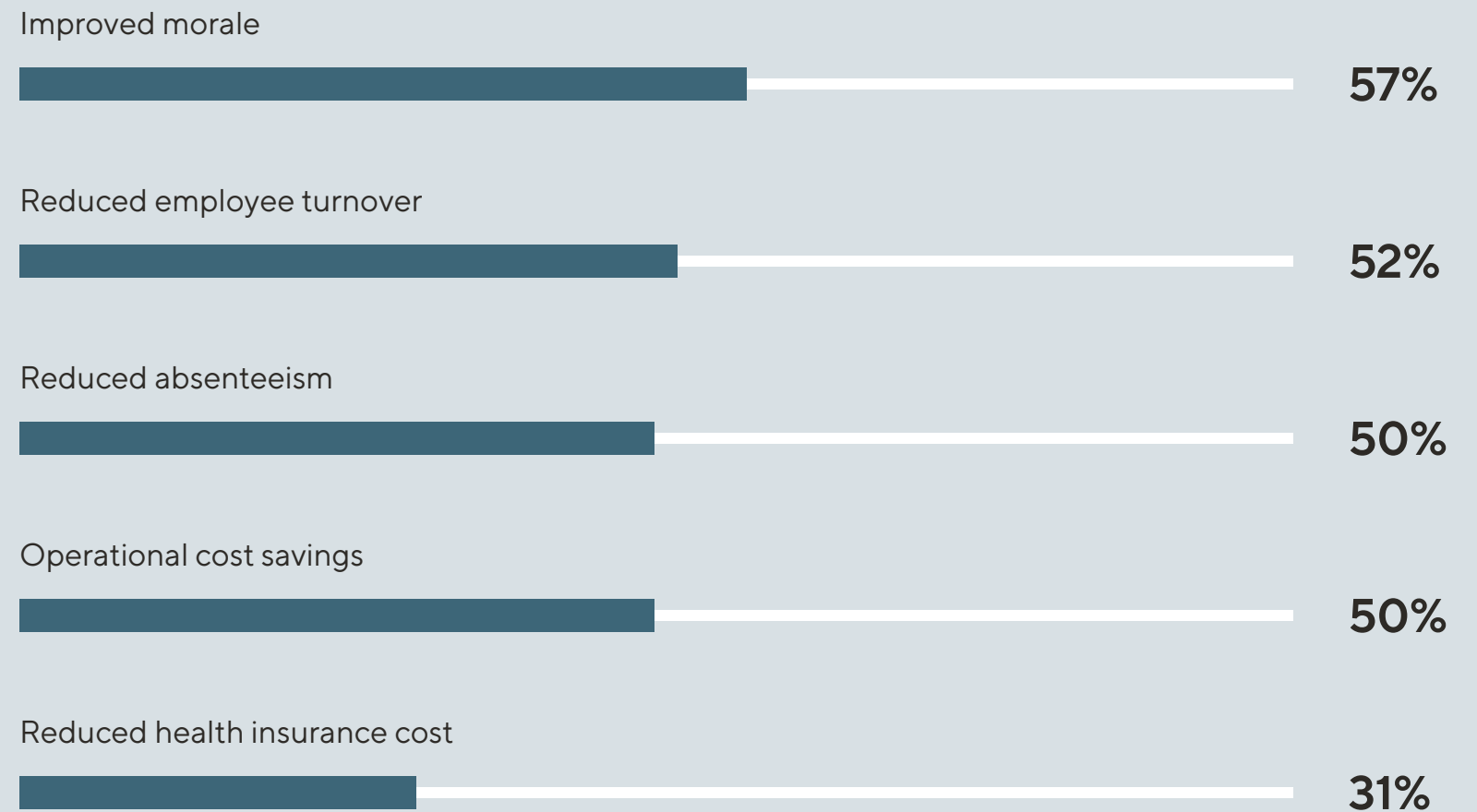
De-Densified and Flexible Space

Trend:
**A Balanced Approach
for Mobile and On-Site**

**By 2030, the demand
for remote work will
increase by 30%.¹**

1. Gartner, March 2020
2. Indeed, November 2018

Benefits of Remote Work According to Employers²

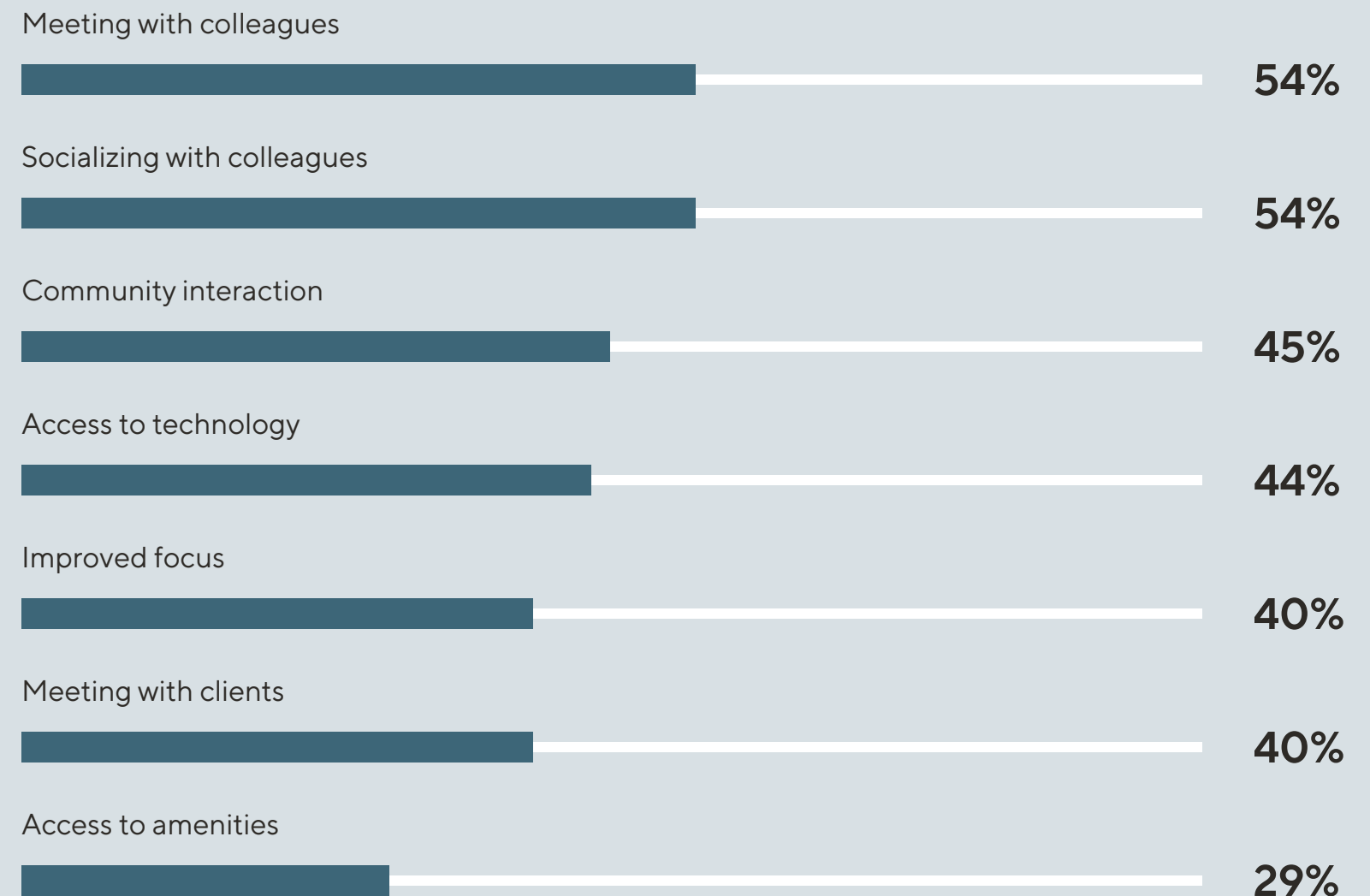


Trend:
**A Balanced Approach
for Mobile and On-Site**

**56% of Gen Z
want to work in
the office because
they enjoy being
social and sharing
ideas in person.¹**

1. National Research Group, March 2020
2. Gensler, U.S. Work from Home Survey 2020

Top Factors Driving People Back to the Workplace²



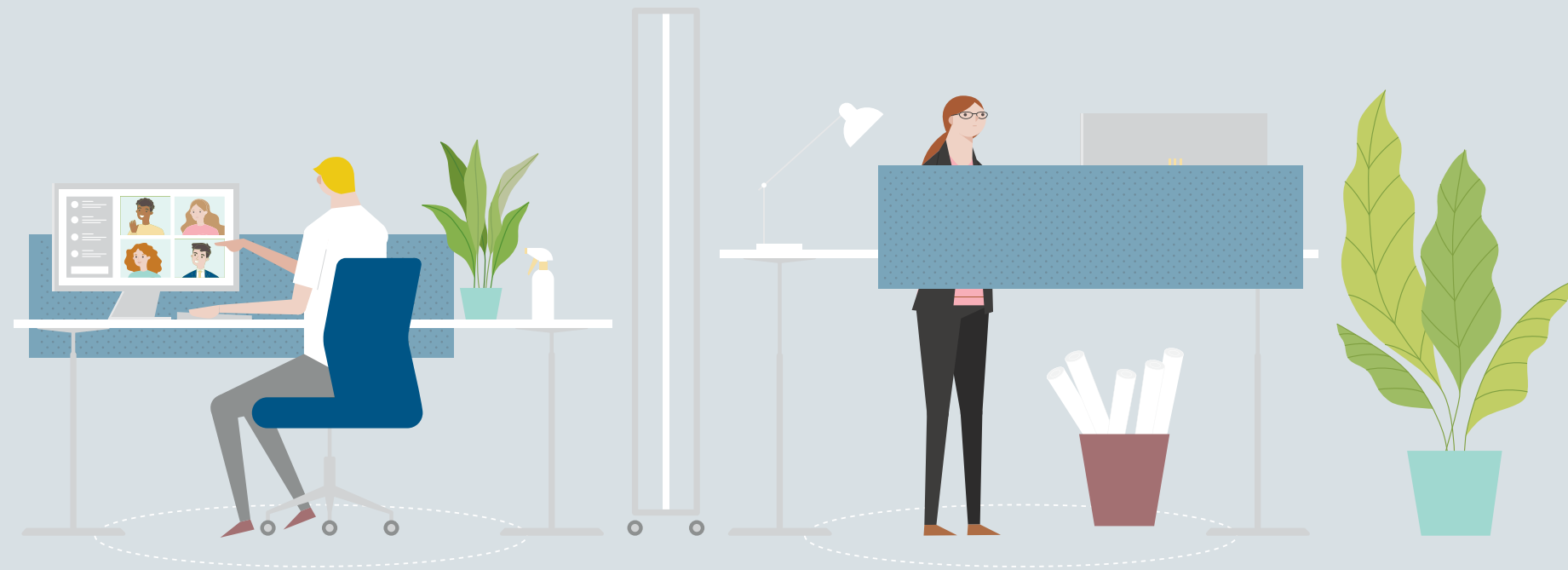
Trend:
**Giving People the
Freedom of Choice**

**71% of people with
choice in where to
work report a great
experience.¹**

Providing a great workplace
experience also yields direct business
performance benefits.

1. Gensler, U.S. Workplace Survey 2019
2. Gensler, U.S. Workplace Survey 2020

**Autonomy and Mobility—having Choice in Where to Work
during an Average Day—are Unequivocally Associated
with Higher Performance.²**



Trend:
**Promoting Healthy
Workplace Practices**

**An unhealthy
workforce costs the
nation \$2.2 trillion a
year, or a staggering
12% of GDP.¹**

1. Global Wellness Institute, The Future of Wellness at Work, 2016
2. Centers for Disease Control and Prevention (CDC), Business Pulse: Healthy Workforce, 2015

Productivity Losses Linked to Absenteeism²



\$225.8 Billion

Annually in the United States.



\$1,685

Per Employee

Trend:
**De-Densified and
Flexible Space**

**46% of organizations
plan to resume their
business operations
with a combination
of policies such as
flexible work hours
and rotational shifts.¹**

Source: 1) Colliers International, July 2020

**Occupying Organizations Are Evaluating Lowering
Workplace Density by up to 20%.**



Office Remix

Inside the Revamped Workday.

The world is constantly changing, and so is the nature of work. Achieving growth and enhancing resiliency for organizations requires both agility and innovation. That's why we help customers reimagine the workday with new approaches that evolve along with the world of work.



Resident Workspaces



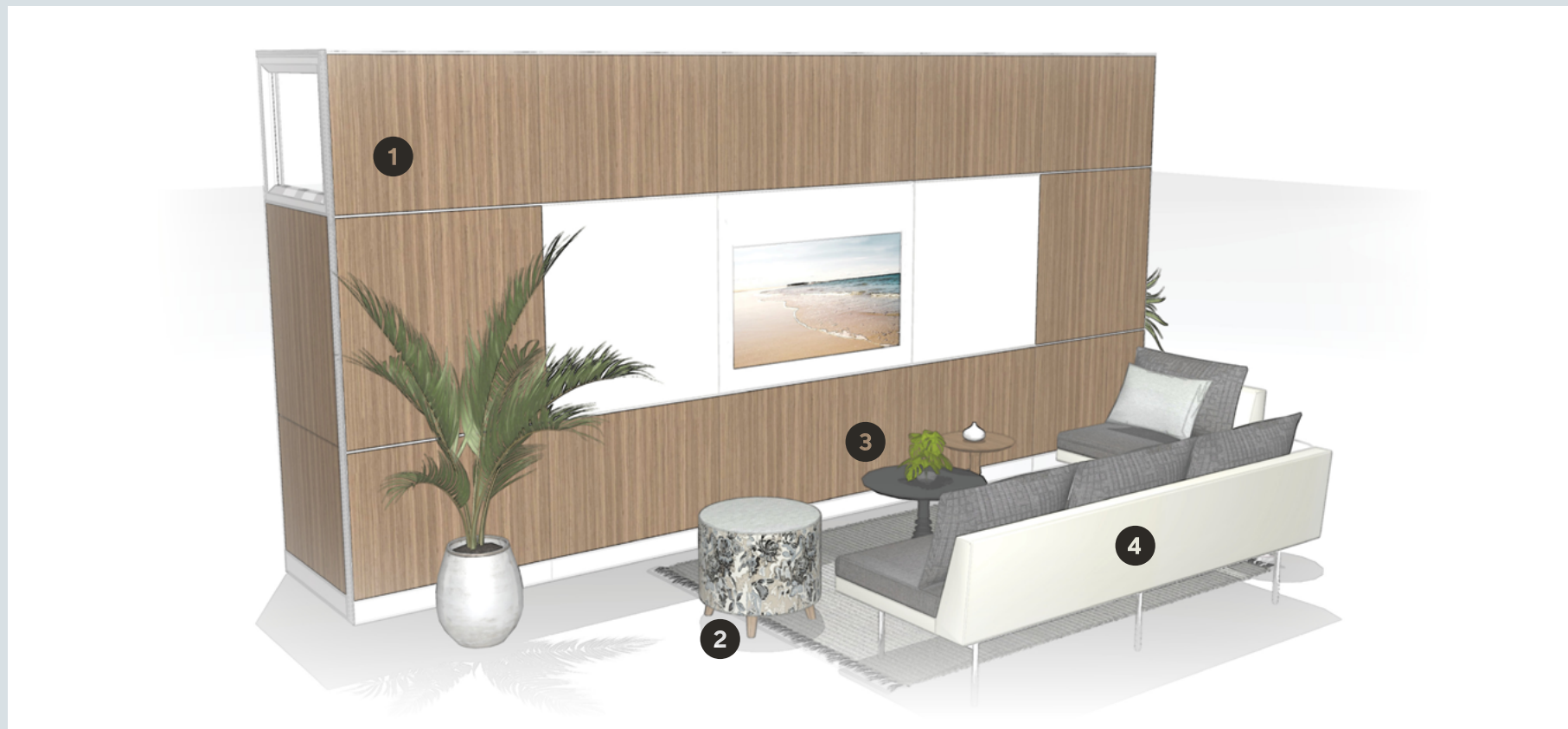
Social Interaction



Group Engagement



Personal Settings



Designated informal meeting area that maximizes space to support small group engagement or social interaction.

Supported Activities

- Supports small group information sharing
- Accommodates meetings with virtual participants
- Provides comfortable, lounge setting for social activities and relaxed conversations
- Enables freedom of choice by accommodating varying workstyles

[Download Typical](#)



1. **Narrate**
System



2. **Joelle Ottoman**
Seating



3. **Frill**
Table



4. **Whittaker**
Seating



Dedicated spaces for workers to engage in short-term individual work. These settings could be used to support visitors or as personal breakaway spaces.

Supported Activities

- Reduces noise and visual distractions
- Supports individual work that requires privacy and concentration
- Provides space for conducting phone calls
- Accommodates personal reflection and renewal
- Enables freedom of choice by accommodating varying workstyles and postures

[Download Typical](#)



1. **Narrate**
System



2. **Joelle**
Seating



3. **Dock**
Table



4. **Pep Stool**
Seating



Engaging spaces for group work, social interaction, private reflection, or individual work. Creates zones for activity-based working within the open plan.

Supported Activities

- Provides centralized area for multi-faceted collaboration and social activities
- Supports small group information sharing and individual work that requires privacy and concentration
- Provides space for conducting phone calls
- Accommodates personal reflection and renewal
- Enables freedom of choice by accommodating varying workstyles

[Download Typical](#)



1. **Narrate**
System



2. **Thatcher**
Seating



3. **Circ**
Table



4. **Helio**
Task Chair



5. **Priority**
Mobile Ped

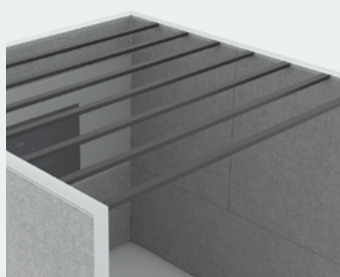


Engaging spaces for group work, social interaction, or individual work. Creates zones for activity-based working within the open plan.

Supported Activities

- Provides areas for multi-faceted collaboration and social activities
- Supports small group information sharing
- Accommodates meetings with virtual participants
- Supports individual work that requires privacy and concentration
- Enables freedom of choice by accommodating varying workstyles

[Download Typical](#)



1. **Narrate**
System



2. **FiXt**
Mobile Table



3. **Pep**
Stools



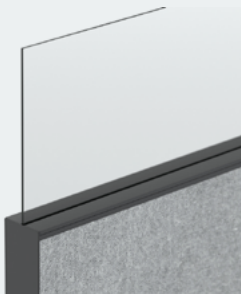
4. **Helio**
Task Chair

Dedicated spaces for visitors to engage in individual work or can be used as personal breakaway spaces.

Supported Activities

- Supports individual work that requires privacy and concentration
- Provides drop-in space for conducting phone calls
- Accommodates personal reflection and renewal
- Promotes visibility and connection while providing spatial barriers
- Enables freedom of choice by accommodating varying workstyles and postures

[Download Typical](#)



1. **Narrate**
System



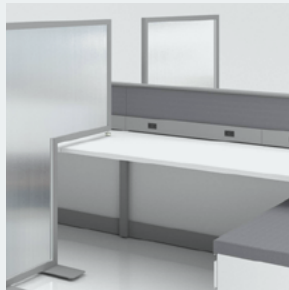
2. **Joya**
Task Chair



3. **Pairings**
Lounge Seating



4. **Dock**
Table



5. **Footprint**
Desk

Dynamic and fluid spaces for workers to engage in individual work. These settings could be used to support visitors or as personal breakaway spaces.

Supported Activities

- Allows for spontaneous, easy reconfiguration with mobile elements
- Enables freedom of choice by accommodating varying workstyles
- Supports individual work that requires concentration
- Provides space for conducting phone calls
- Accommodates personal reflection and renewal
- Encourages well-being with ability to make healthy postural changes

[Download Typical](#)



1. **Narrate**
System



2. **Footprint**
Metal Storage Ped



3. **Joya**
Task Chair



4. **Helio**
Sit-to-Stand Stool



5. **Sanctuary**
Storage



6. **Aidin**
Table



7. **Joelle**
Seating



Engaging spaces for group work or social interaction.
Creates hubs of interaction within the open plan.

Supported Activities

- Allows for spontaneous, easy reconfiguration with mobile elements
- Enables freedom of choice by accommodating varying workstyles
- Supports individual work that requires concentration
- Provides space for conducting phone calls
- Accommodates personal reflection and renewal
- Encourages well-being with ability to make healthy postural changes

[Download Typical](#)



1. **Narrate**
System



2. **Pairings**
Lounge Seating & Table



3. **Kore**
Table



4. **Joelle**
Ottomans



5. **Bloom**
Table



6. **Smile**
Seating



Love What You See?

Design kits for our innovative Narrate idea starters are available online for download. Visit us at kimballinternational.com/idea-starters