

Flip Nest Base to Worksurface Assembly

Tools Required

- Drill
- 1/8" Drill Bit
- #3 Phillips Head Bit Drive
- #2 Phillips Head Bit Drive

Hardware Required

- 1—Worksurface
- 1—Flip and Nest Base
- 20 - #12 x 1 Pan Head Wood Screws
- 8 - 1/4 - 20 x 1/2" Pan Head Machine Screws

Installation

1. Unpack worksurface and place up side down on a non-marring surface.
2. Unpack Flip/Nest mechanism and legs. **Note that these will be in separate boxes and hardware will be taped to the inside of the cartons.**
3. Place the flip and nest mechanism on top of the worksurface and align the (4) outer most mounting holes with the predrilled holes in the worksurface on each side as shown in **figure A**.
4. Using a #3 Phillips head bit, and the #12 X 1" wood screws provided, attach the mechanism and handle to the worksurface. As shown in **Figure B**
5. With the mechanism in the closed position attach the legs with the 1/4-20 machine screws provided. There will be 8 screws in total. See **Figure C**.
6. Place and screw cable clamps down where see fit.
7. Flip table over and test that flip and mechanism locks in both closed and open positions as shown in **Figure D**.

Figure A

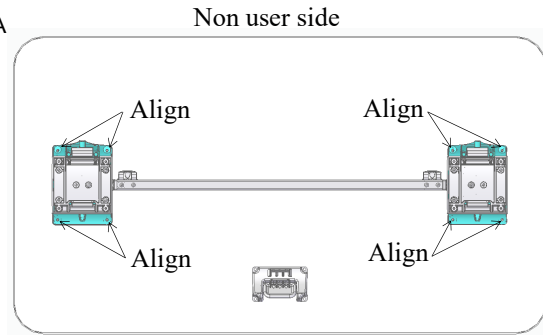


Figure B

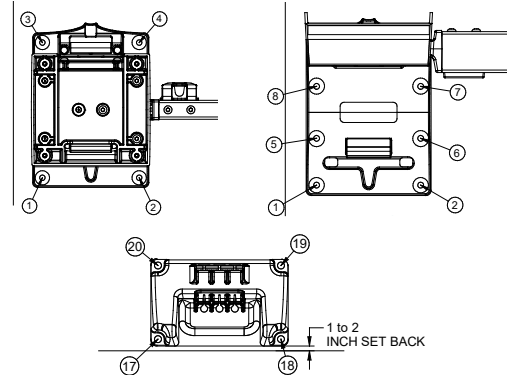


Figure C

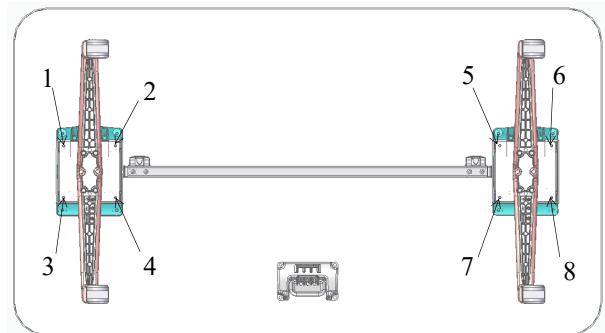


Figure D

