

STANCHION ATTACHMENT

Tools Required

- Box Cutter/Utility Knife
- Drill/Philips Head Screw Driver
- Level

Hardware Required

- | | |
|---------------------------|--------------------------------------|
| 1 - Component Top | 2 - M8X48 Button Head Cap Screw |
| 1 - Ped | 8 - #8 X .62 Pan Head Philips Screw |
| 2 - Stanchion | 8 - #8 X 1.25 Pan Head Philips Screw |
| 2 - Stanchion Mount Plate | |

Installation

1. Using a knife open boxes removing all components/hardware carefully and place aside. See components in **Figure A and hardware required.**
2. Place Component Top upside down, placing the Stanchion Mounting Plate into the cut-out of the Component Top. Using the 8, .62" long Pan Head Philips Screws attach the mounting plate to the bottom for the component top. See **Figure B.**
3. Place Component Top onto the ped, lining the top with the end panels of the ped. Reaching into the ped, use the 8 1.25" Pan Head Screws to attach the component top to the ped. Use the larger pilot holes for this attachment. See **Figure B.**
4. Place Stanchion on top of the assembled ped and component top. Reaching inside the ped, using 2 Button Head Screws, attach the stanchion. See **Figure B.**
5. Using a level, make sure that the unit is square. Assembly is complete. See **Figure C.**

Figure A

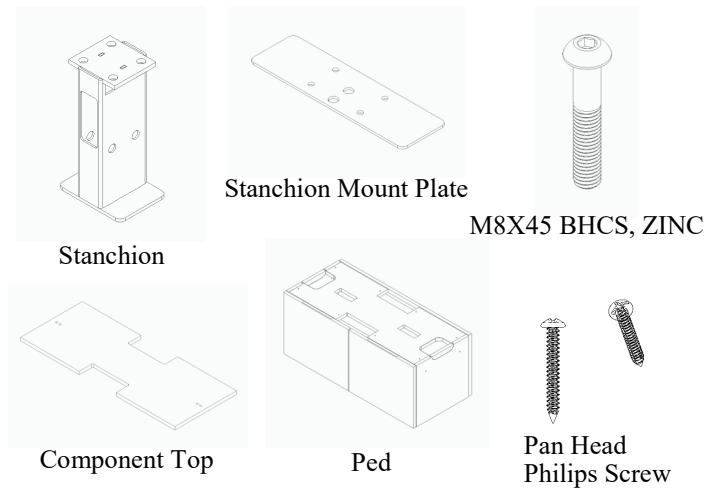


Figure B

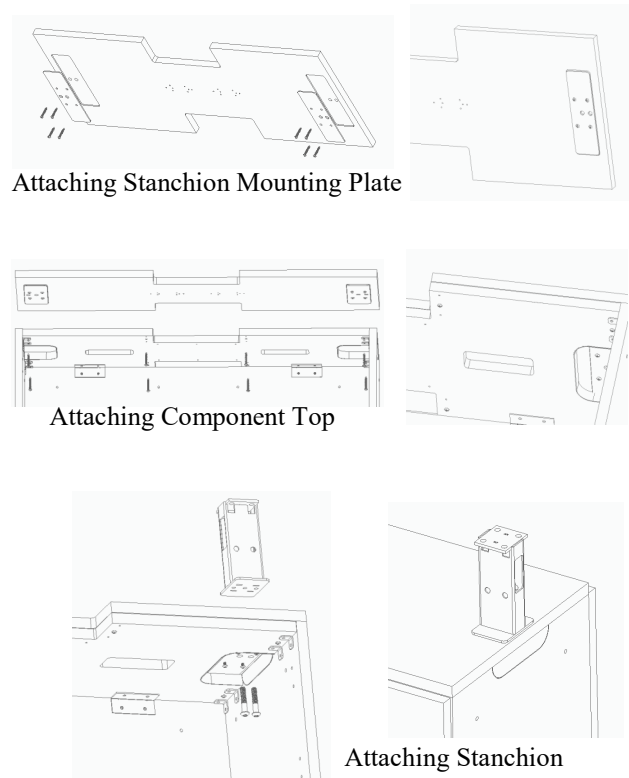


Figure C

