



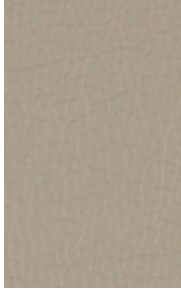
**MOMENTUM**  
TEXTILES & WALLCOVERING

# Mixology

Alliance Seating Textile Collection



BEELINE EPU  
CANVAS



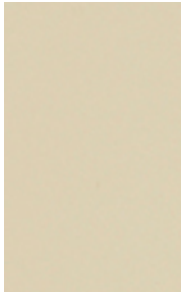
CANTER EPU  
QUARRY



FAUX FELT  
PEBBLE



COVER CLOTH  
PLATINUM



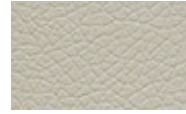
ENDURANCE EPU  
BISQUE



OAT



JETTY



FOLKSTONE  
GREY



NIMBUS



STONE



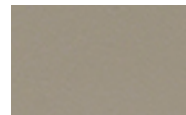
POOL



VESPER



DELFT



GULL



BLUEBELL



SPROUT



TIDAL



SAND DOLLAR



INK



SPROUT



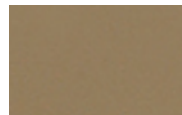
LAGOON



OAT



INDIGO



SEED



INK



PORTOBELLO



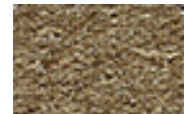
GEYSER



SADDLE



STORM



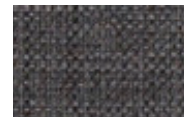
PATH



FLANNEL



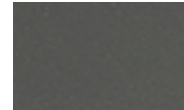
SORREL



GRAPHITE



TOFFEE



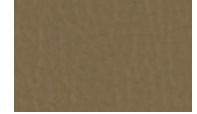
JETTY



ECLIPSE



FORGE



EARTH



ONYX



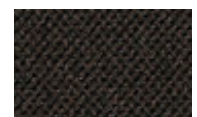
BARK



CHARCOAL



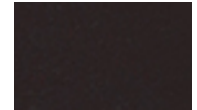
HEIRLOOM



JET



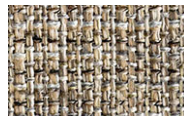
SADDLE



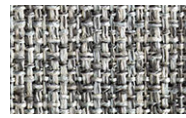
NOIR



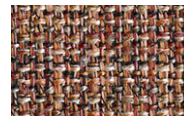
CARAVAN SHORE



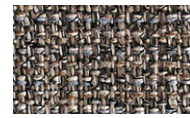
MILKWEED



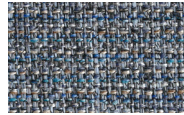
GRANITE



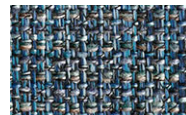
EMBER



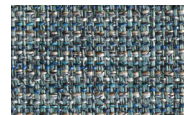
TRAIL



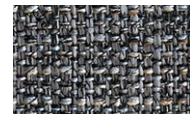
BLUESTORE



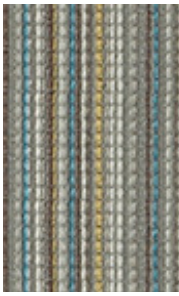
ZIRCON



COVE



SHADOW



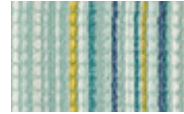
MIXOLOGY CV  
CHESHIRE



CHALICE



BAMBOO



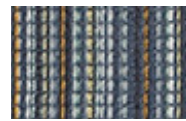
CASCADE



NIGHTLIFE



BLUET



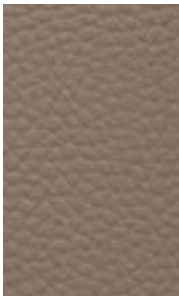
CHAMBRAY



SAPPHIRE



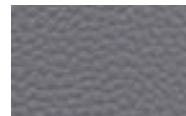
FOSSIL



HYDE CV  
PUMICE



PARCHMENT



LONDON



CELADON



AGATE



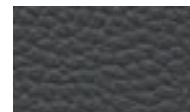
SKYLIGHT



DEWDROP



CADET



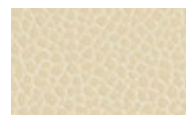
ONYX



SILICA LEATHER  
CHAMBRAY



DOVE



ALMOND



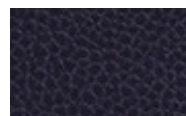
SADDLE



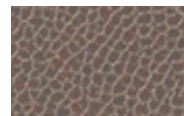
PEWTER



ALOE



INK



SHADOW



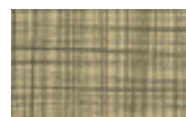
ECLIPSE



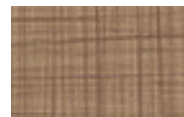
NOTE CV FOSSIL



GLACIER



ALOE



RYE



RUSSET



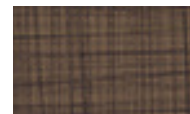
CASCADE



ATLANTIC



GRAPHITE



CAROB



SANYA CV  
ARCTIC



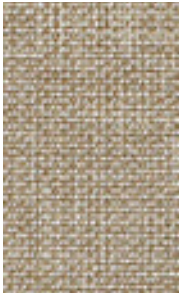
SILICA SUEDE  
PEBBLE



TRIBECA CV  
MICA



SMART SOFT  
BISQUE



VANGUARD CV  
LUNETTE



FERN



POOL



PARCHMENT



BLUESTONE



SHELL



CASCADE



JUTE



CASCADE



CREME



CALICO



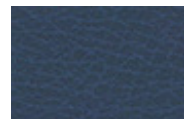
FLAX



DUSK



ANJOU



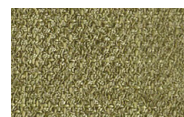
INDIGO



LICHEN



MARINER



KIWI



INK



FOIL



POLARIS



CLAY



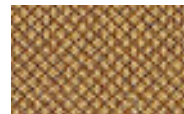
NICKEL



DESERT



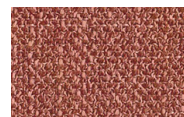
GALENA



ROOT



SHADOW



CLAY



SILVER



SPROUT



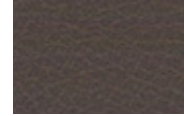
STEEL



THISTLE



SABLE



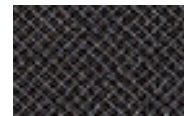
EARTHEN



ADRION



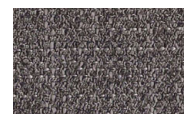
FOSSIL



SLATE



EARTHEN



SLATE



PEBBLE



CARBON



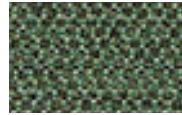
INFINITY GULL



DOVE



SABLE



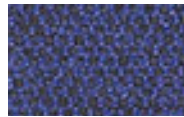
VINE



TERRAIN



ALUMINUM



BEYOND



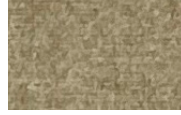
GRAPHITE



ECLIPSE



FELTRO CLOUD



SAND



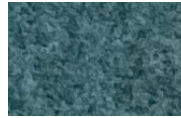
SPROUT



BLUSH



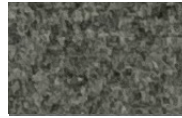
BERRY



SPA



INK



STEEL



SHADOW



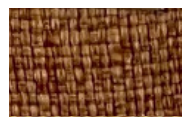
MELLO  
MINERAL



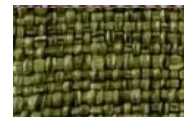
PARCHMENT



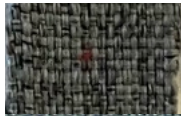
CANYON



BRANDY



SPROUT



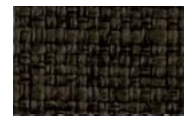
GALENA



RIVER



INK



SABLE



DEKA HEMP



BISQUE



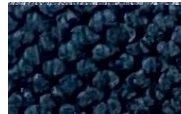
GARNET



PERIDOT



DRIFTWOOD



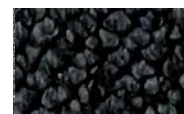
NORDIC



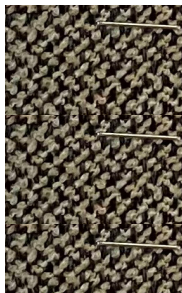
RAIN



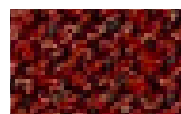
MOON



CHARCOAL



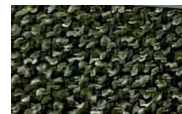
GURU MOREL



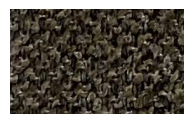
SUMAC



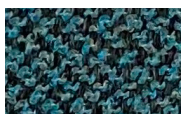
CANARY



HOSTA



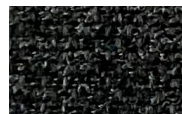
TAWNY



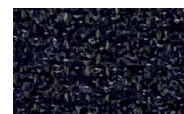
AQUA



CHALICE



ONYX



NOCTURNE

# Technical Information

## Mixology Collection

Pattern - Width	Content	Backing	Finish	Abrasion Wyzenbeek	Light-Fastness	Flammability	Cleaning Code
Beeline EPU - 54"	100% EPU Polyurethane	Polyester		900,000 Double Rubs	Class 4	CA Bulletin 117 2013, UFAC Class 1, NFPA 260 Class 1, Passes IMO Part 8 with Proper Components	W BC (4:1)
Canter EPU - 54"	100% EPU Polyurethane	Polyester		1,000,000 Double Rubs	Class 4	CA Bulletin 117 2013, UFAC Class 1, NFPA 260 Class 1, Passes IMO Part 8 with Proper Components	W BC (4:1)
Caravan - 57"	100% Polyester	None	Crypton	100,000 Double Rubs	Class 5	CA Bulletin 117 2013, UFAC Class 1, NFPA 260 Class 1,	WS BC (10:1)
Cover Cloth - 59"	56% Repreve Post Consumer Recycled Polyester, 44% Polyester	None	Crypton Green	200,000 Double Rubs	Class 4	CA Bulletin 117 2013, UFAC Class 1, NFPA 260 Class 1,	W BC (10:1)
Deka - 56"	63% Post Consumer Recycled Polyester, 37% Polyester	Acrylic	PFAS-Free Stain Resistant	200,000 Double Rubs	Class 4	CA Bulletin 117 2013, UFAC Class 1, NFPA 260 Class 1, ASTM E84	WS
Endurance EPU - 54"	100% EPU Polyurethane	Polyester		1,000,000 Double Rubs	Class 4	CA Bulletin 117 2013, UFAC Class 1, NFPA 260 Class 1, Passes IMO Part 8 with Proper Components	W BC (4:1)
Faux Felt - 56"	62% Repreve Post Consumer Recycled Polyester, 38% Polyester	None	Crypton Green	75,000 Double Rubs	Class 4.5	CA Bulletin 117 2013, NFPA 260 Class 1,	WS BC (10:1)
Feltro - 56"	100% Polyester	None	PFAS-Free Stain Resistant	115,000 Double Rubs	Class 4.	CA Bulletin 117 2013, UFAC Class 1, NFPA 260 Class 1, ASTM E84	WS
Guru - 56"	100% Solution Dyed Polypropylene	Acrylic		100,000 Double Rubs	Class 5	CA Bulletin 117 2013, UFAC Class 1, NFPA 260 Class 1, ASTM E84	WS
Hyde CV - 54"	100% Clean Vinyl / Phthalate Free	Polyester	Protective Topcoat	1,000,000 Double Rubs	Class 5	CA Bulletin 117 2013, UFAC Class 1, NFPA 260 Class 1	WS BC (10:1)
Infinity - 54"	74% Post Consumer Recycled Polyester, 26% Polyester	Acrylic	Soil & Stain Resistant	200,000 Double Rubs	Class 4	CA Bulletin 117 2013, UFAC Class 1, NFPA 260 Class 1, ASTM E84	WS
Mello - 56"	80% Post Consumer Recycled Polyester, 20% Polyester	Acrylic	PFAS-Free Stain Resistant	115,000 Double Rubs	Class 4	CA Bulletin 117 2013, UFAC Class 1, NFPA 260 Class 1, ASTM E84	WS
Mixology CV - 54"	100% Clean Vinyl / Phthalate Free	Polyester	Protective Topcoat	250,000 Double Rubs	Class 5	CA Bulletin 117 2013, UFAC Class 1, NFPA 260 Class 1, Passes IMO Part 8 with Proper Components	WS BC (10:1)
Note CV - 54"	100% Clean Vinyl / Phthalate Free	Polyester	Protective Topcoat	220,000 Double Rubs	Class 4	CA Bulletin 117 2013, UFAC Class 1, NFPA 260 Class 1	WS BC (10:1)
Sanya CV - 54"	100% Clean Vinyl / Phthalate Free	Polyester	Protective Topcoat	220,000 Double Rubs	Class 5	CA Bulletin 117 2013, UFAC Class 1, NFPA 260 Class 1	WS BC (10:1)
Silica Leather - 54"	100% Silicone	Polyester		210,000 Double Rubs	Class 4	CA Bulletin 117 2013, UFAC Class 1, NFPA 260 Class 1, BS5852-2006 Crib Ignition Source 5, IMO Part 8	WS BC (4:1)
Silica Suede - 54"	70% Polyurethane / PVC Free, 30% Silicone	Polyester		500,000 Double Rubs	Class 5	CA Bulletin 117 2013, UFAC Class 1, NFPA 260 Class 1, Passes IMO Part 8 with Proper Components	WS BC (4:1)
Smart Soft - 56"	50% Polyester, 50% Recycled Polyester	None	Crypton	100,000 Double Rubs	Class 4	CA Bulletin 117 2013, UFAC Class 1, NFPA 260 Class 1	WS BC (10:1)
Tribeca CV - 54"	100% Clean Vinyl / Phthalate Free	Polyester	Protective Topcoat	100,000 Double Rubs	Class 4	CA Bulletin 117 2013, UFAC Class 1, NFPA 260 Class 1, Passes IMO Part 8 with proper components	WS BC (10:1)
Vanguard CV - 54"	100% Clean Vinyl / Phthalate Free	Polyester	Protective Topcoat	100,000 Double Rubs	Class 4	CA Bulletin 117 2013, UFAC Class 1, NFPA 260 Class 1, Passes IMO Part 8 with Proper Components	WS BC (10:1)

\* ACT® Registered Certification Marks

Multiple factors affect fabric durability and appearance retention, including end-user application and proper maintenance

Abrasion test results exceeding ACT Performance Guidelines are not an indicator of product lifespan

Cleaning Code Definition

- W: Water-based foam or cleaner
- WS: Clean with water-based cleaning agents or foam

Visit [momentumtextilesandwalls.com](http://momentumtextilesandwalls.com) to view full pattern repeat and complete specs