

Note: These instructions explain basic installation of rail kits and legs to worksurfaces. For safety purposes, it is recommended that more than one person be used to move worksurfaces and/or assembled tables.

Assembly Instruction

**Grin Counter Height
Tables and Grin Bar
Height Tables**

1 Unpack the worksurface and place it face down on a smooth, hard surface. Take care not to damage the work-surface.

2 Prep legs and footrails for assembly to the rail:

1. Insert leg pin (Figure A) into top of the leg *If needed, lightly tap in* Use flat head screw driver to turn the pin into the correct position. (Figure B) Screw in Foot Rail Pin into position, into the leg. (Figure C) Place footrail over the Foot Rail Pin, repeating this process for all legs. (Figure D) Place Flat Hex Head Screw through the foot rail into the foot rail pin, using an 5/32 Allen wrench tighten to secure the foot rail. (Figure E) Repeat this process until all legs are secure to the foot rail. Insert glides (Figure F) into the



Figure A



Figure F

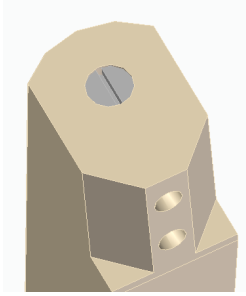


Figure B

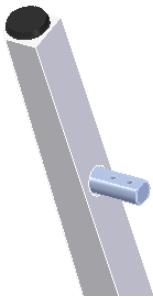
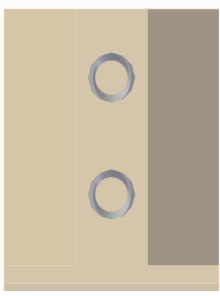


Figure C

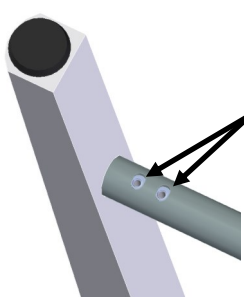


Figure D

Insert Flat Hex Head Screw, to secure the foot rail.



Figure E

Package Contents

| Component..... | Qty |
|---------------------------|------|
| Apron Rails | 4 |
| Corner Brackets | 4 |
| Machine Screw M8x110 | 8 |
| Flake Board Screw 10X1 | 8-28 |
| Flat Hex Head Screw M6x25 | 8 |
| Leg Pin | 4 |
| Foot Rail Pin | 4 |
| Leg | 4 |
| Foot Rail | 1 |

Tools Required

Allen Wrench
Drill with Magnetic Bit
Magnetic Tip Screw driver
Level

NATIONAL
Furniture with Personality®

Telephone 800.482.1717
Fax 812.482.8800
www.NationalOfficeFurniture.com

Part # 3103900

Proper product installation, in accordance with these instructions, is the responsibility of the installing agent.

Assembly Instruction

3

Assembling Rails, Legs and Corner Brackets:

1. Mock up the rails into their positions. (Figure G)
2. Take two of the rails and attach together with a corner bracket. (Figure H)
3. Place the leg upside down in the corner and hold together by placing your hand around the leg and fingers on the corner bracket pressing together. (Figure I)
4. Place the socket head machine screws through the corner bracket into the leg, using an 7/32 Allen wrench to tighten. (Figure J)
5. Repeat process until all rails & legs are assembled together. (Figure K)

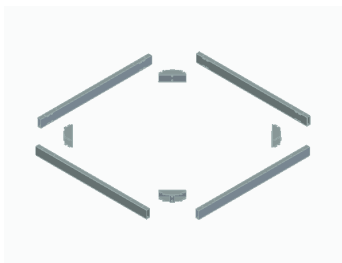


Figure G

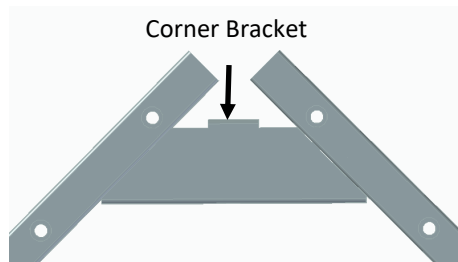


Figure H

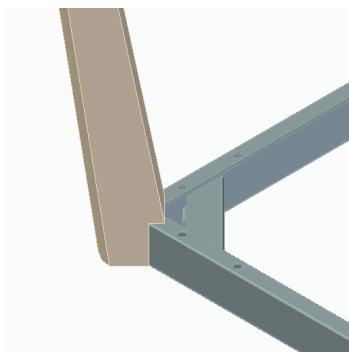
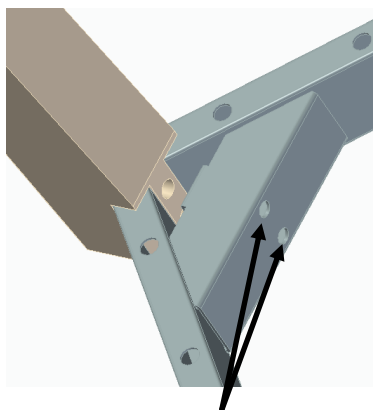


Figure I



Socket Head Machine Screw Locations

Figure J

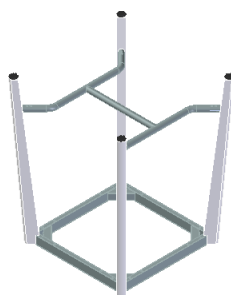


Figure K

Grin Counter Height Tables and Grin Bar Height Tables

Package Contents

| Component..... | Qty |
|---------------------------|------|
| Apron Rails | 4 |
| Corner Brackets | 4 |
| Machine Screw M8x110 | 8 |
| Flake Board Screw 10X1 | 8-28 |
| Flat Hex Head Screw M6x25 | 8 |
| Leg Pin | 4 |
| Foot Rail Pin | 4 |
| Leg | 4 |
| Foot Rail | 1 |

Tools Required

Allen Wrench
Drill
Screw driver
Level

NATIONAL

*Furniture with Personality**

Telephone 800.482.1717

Fax 812.482.8800

www.NationalOfficeFurniture.com

Part # 3103900

Proper product installation, in accordance with these instructions, is the responsibility of the installing agent.

Assembly Instruction

4

Final Assembly:

1. Place worksurface upside down, on a sturdy flat surface. (Figure L)
2. Place Rail & Leg assembly upside down on worksurface. (Figure M)
3. Line up the mounting holes on the rails, with the pilot holes on the worksurface. (Figure N)
4. Use 10x1 Flake Board Screws to secure the frame assembly to the worksurface.
5. Flip table and move to final location, use a level for reference and adjust the glides to level table. (Figure O)



Figure L

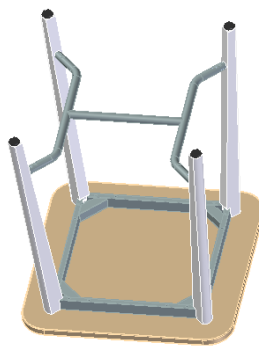


Figure M

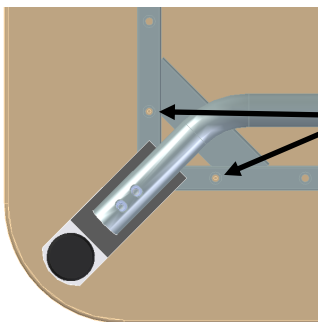


Figure N

Lining up the mounting holes of the rails, with the pilot holes in the worksurface. Using 10x1 Flake Board Screws to secure.



Finished Product
Figure O

Grin Counter Height Tables and Grin Bar Height Tables

Package Contents

| Component..... | Qty |
|---------------------------|------|
| Apron Rails | 4 |
| Corner Brackets | 4 |
| Machine Screw M8x110 | 8 |
| Flake Board Screw 10X1 | 8-28 |
| Flat Hex Head Screw M6x25 | 8 |
| Leg Pin | 4 |
| Foot Rail Pin | 4 |
| Leg | 4 |
| Foot Rail | 1 |

Tools Required

Allen Wrench
Drill
Screw driver
Level

NATIONAL

*Furniture with Personality**

Telephone 800.482.1717

Fax 812.482.8800

www.NationalOfficeFurniture.com

Part # 3103900

Proper product installation, in accordance with these instructions, is the responsibility of the installing agent.