

## Assembly Instruction

### Work Surface Assembly

#### Note:

- It is recommended that more than one person be used to unpack, move, & assemble worksurfaces.
- The 36"X38" rectangular worksurface **N87TRT3638L & N87TRT3638DL** is to only be attached to a N87TRD120L or N87TRD120DL to maintain proper stability.
- If electrical option is selected, attach electrical components after the worksurface is attached to the upholstered spine.

#### 1. Unpack the Worksurface

- Locate the hardware bag containing the small mounting brackets and screws.
- Unsecure the large mounting brackets from the bottom of the worksurface.  
(The brackets are temporarily secured to bottom side of the worksurface to prevent damage during shipping and handling).

#### 2. Assemble the 4 Small Flat Brackets

- Using the #10 X 1" panhead screws, align holes in the metal bracket with pre-bored holes in the bottom 120° worksurface (N87TRD120L or N87TRD120DL) that the 36"X38" worksurface will attached to.
- Securely fasten (4) #10X1" panhead screws through each bracket into the bottom of the top without overtightening causing the screw to strip out the wood. Repeat this process for all 4 brackets. (See illustration below)

#### Recommended Tools

- Tape Measure
- Black Marker
- Sharp Pointed Pick
- X-Acto Knife or Scissors
- Screw Gun
- Phillips Driver Bit
- Level

Package Contents	Qty.
36"x38" Rectangular Worksurface	1
Small Flat Brackets	4
Large Flat Brackets	2
#10x1 PH Phillips Screws	48
#12x2 1/4 Flat Head Screws	8

NATIONAL | Furniture with Personality™

Telephone 800.482.1717  
Fax 812.482.8800  
www.nationalofficefurniture.com

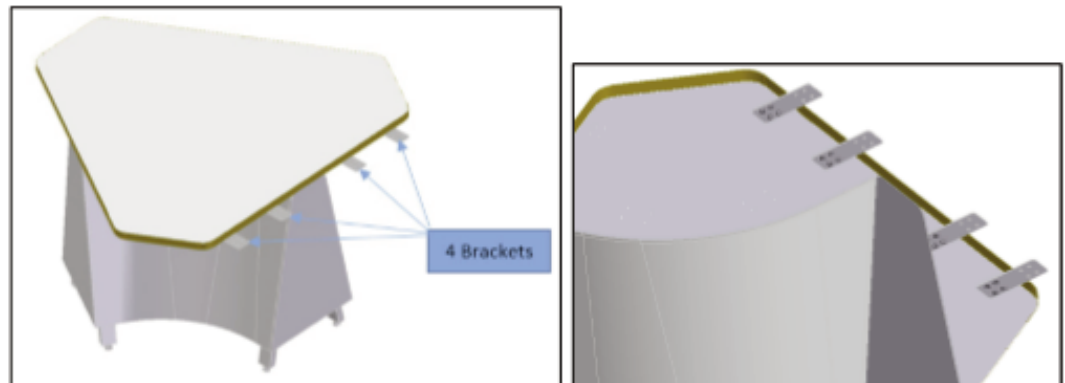
Part #2879035  
Rev,A

Printed in U.S.A  
© 2017 Kimball International, Inc.

Proper product installation, in accordance with these instructions, is the responsibility of the installing agent. If you have any questions concerning these instructions, please call National Customer Service.

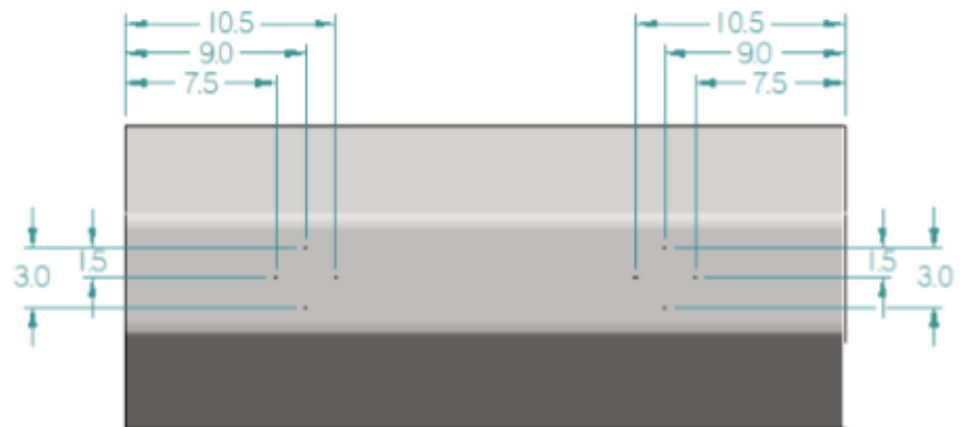
## Assembly Instruction

### Work Surface Assembly

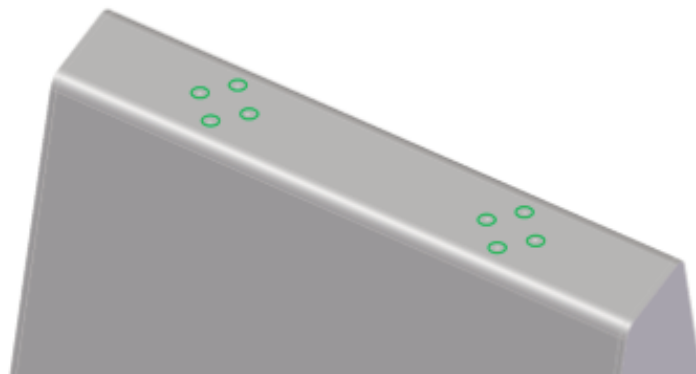


### 3. Assemble the 2 Large Flat Brackets to the Top of the Upholstered Spine

- Using a black marker & sharp pointed ice pick locate and identify the prebored bracket mounting holes on the top surface of the upholstered spine. See Illustration below for the prebored hole locations.

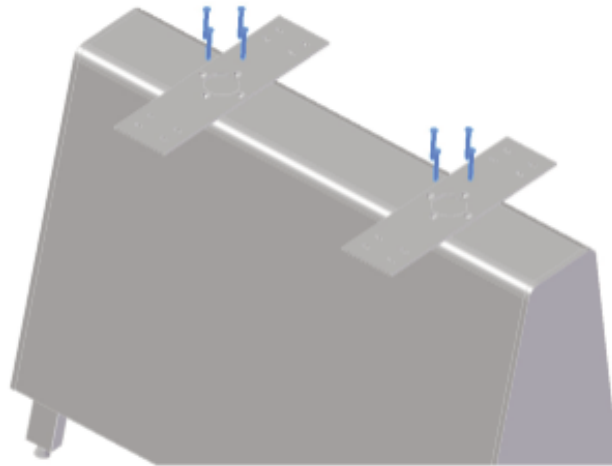


- Using a X-Acto knife or scissors, cut a small  $\frac{1}{2}$ " diameter hole in both the upholstery cover and foam around all (8) attachment hole locations.



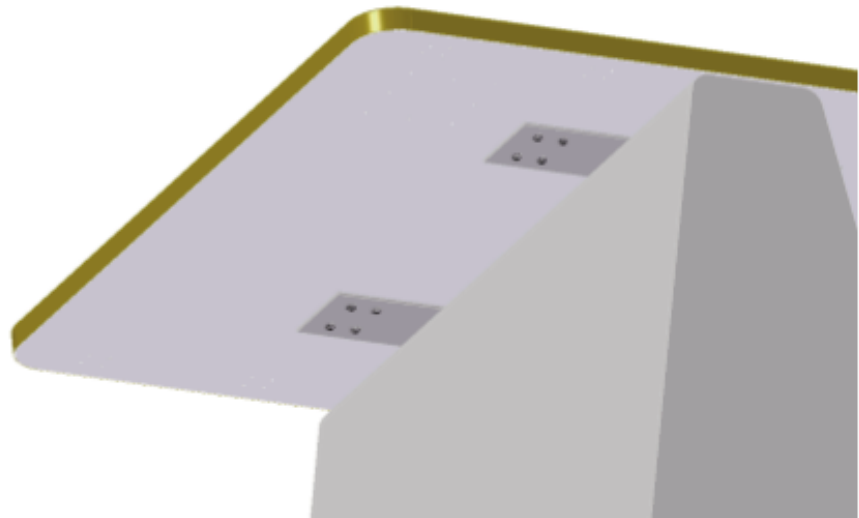
### Work Surface Assembly

- Align the brackets with the prebored holes in the top of the upholstered spine securing each bracket using (4) #12 X 2 ¼" flathead screw as shown in the illustration below.



#### 4. Attach 36" X 38" Worksurface to Upholstered Spine

- Set and center the 36" X 38" worksurface on top of spine aligning the prebored holes in the bottom of the worksurface with slotted holes in the two attachment brackets.
- Securely fasten (8) #10X1" panhead screws through each bracket into the bottom of the top without overtightening causing the screw to strip out the wood. Repeat this process for both brackets on each side. (See illustration below)

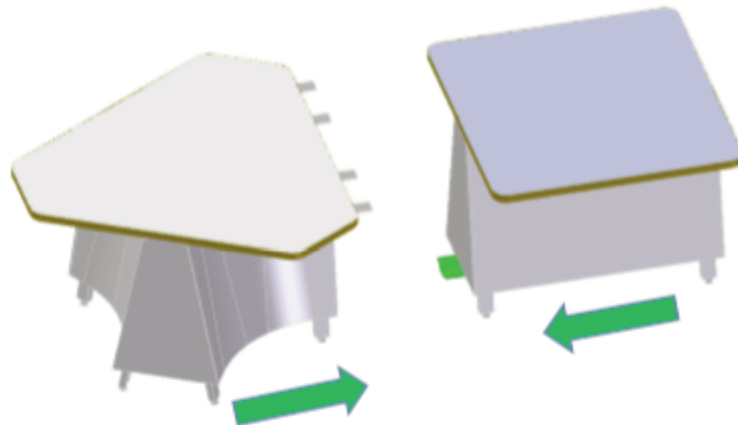


## Assembly Instruction

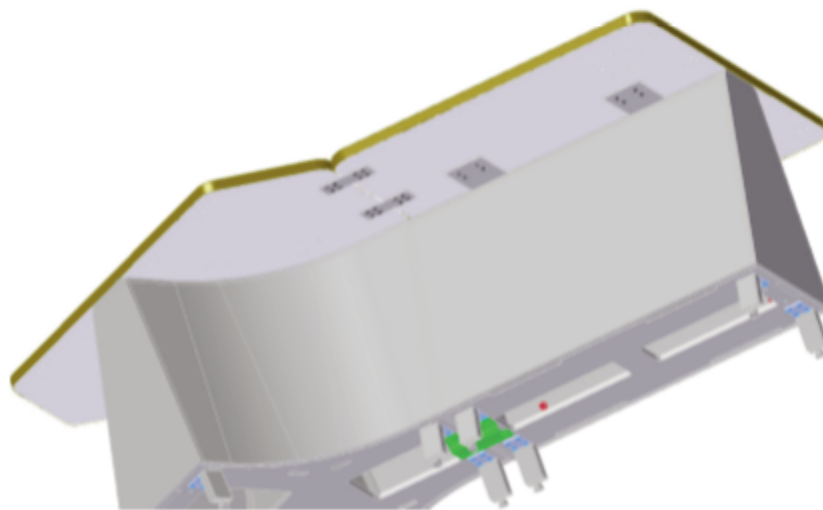
### Work Surface Assembly

**5. Attach 36" X 38" Worksurface/spine assembly to mating 120° worksurface/spine assembly.**

- Position 36" X 38" worksurface/spine assembly to mating 120° worksurface/spine assembly.



- Align the prebored holes in bottom of the worksurface with the brackets. Securely fasten (4) #10X1" panhead screws through each bracket into the bottom of the worksurface without overtightening causing the screw to strip out the wood. Repeat this process for all 4 brackets. (See illustration below)



**6. Secure Ganging Bracket**

- Attach ganging bracket on bottom of the upholstered spine per the ganging instruction sheet included with the upholstered spine model.

**7. Align, orient, level ganged assembly in desired final position.**