



Lehr™

Mixed material paradise.

This tiered table series showcases stunning materials. Its upper table features a walnut surface while the lower table highlights a brown ceramic top, all accented by a black metal frame. The round table version mixes a ceramic top surface and a brown glass lower shelf. Eclectic materials merge to create these functional statement pieces.



Round

C04SDT0201

Height 21.65"
Diameter 17.32"



Tiered

C04SDT0301

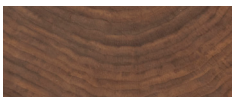
Height 24.01"
Width 29.45"
Depth 25"

Ceramic



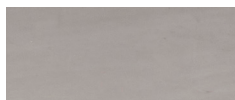
Brown

Wood Finish



Walnut

Glass



Brown

Metal Paint



Black

Specs

- Round table features a high gloss brown ceramic top and brown glass shelf
- Tiered table includes a brown ceramic top and Walnut cross cut solid wood tiered top with irregular raw edge
- Black powder coated steel base
- Black nylon glides

Assembly

- Some assembly required

Shipping

- Can be shipped small parcel FedEx Ground

Warranty

- 5 years

Certifications

- ANSI/SOHO S6.5-2008 (R2013)
- California Technical Bulletin #117-2013