

Lounge Beverage Table Inst.

Tools Required

- #2 Phillips Screwdriver.
- Optional - Drill with a medium or long #2 Phillips drive bit.

Hardware Required

- Table Mounting Plate:
 - (6) #8-32 Flat Head Machine Screw x 1/2"
- Wood Table:
 - (6) #8 Flat Head Undercut Wood Screw x 3/8"
- Laminate Table: (6) #8 Flat Head Wood Screw x 5/8"
- Solid Surface Table: (6 each)
 - #8-32 Flat Head Undercut Machine Screw x 3/8"
 - Neoprene Washer, 1/32" thick x 1-1/8" Diameter

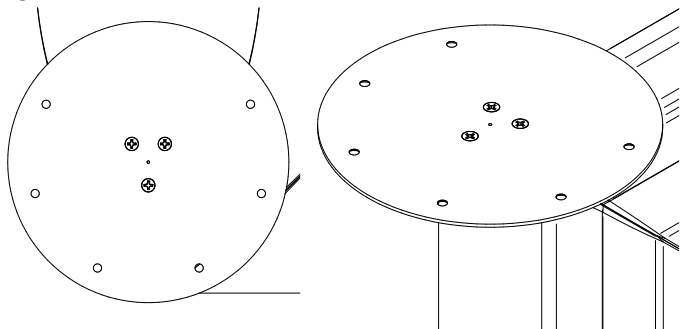
Installation

1. Locate the Beverage Table box within the Lounge Carton. Table, plate and hardware will be inside.
2. Verify received Table and hardware align with what is called out in the Hardware Required section.

NOTE: Lounge Beverage Table is not to be used for lifting or moving the lounge furniture. Table and mounting plate are not designed to handle moving the lounge.

3. Retrieve Table Plate and three (3) #8-32 x 1/2" flat head machine screws from packaging.
4. Install plate(s) so that the orientation of the plate has the center three (3) mounting holes so the counter-sinks are facing upwards away from the leg. (See Figure A) Three (3) #8-32 x 1/2" machine screws are to be driven into the metal inserts inside the leg.
5. This orientation is the same for whether the table is installed on the left or right side.

Figure A



5. Determine which table material type you have. Wood, Laminate or solid surface. Now verify the received hardware compared to the Hardware Required list. Once confirmed, continue onward.
6. Position the lounge in such a way you have access to the bottom of the Table Mounting Plate.

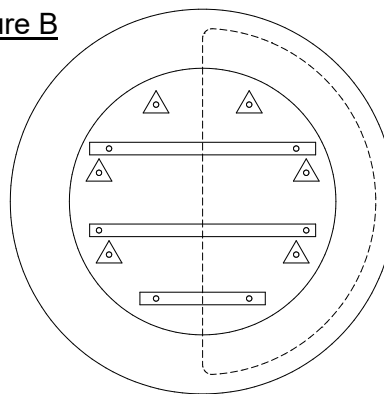
Wood Beverage Table Mounting Instructions

1. Table Mounting Plate is installed as described.
2. Depending your preference of Wood Table alignment of the left or right pocket location, it does not affect the Table Mounting Plate assembly. Wood Tables have screw holes for both alignments. See Figure B.
3. Align pre-drilled holes in the bottom of the Wood Beverage Table with the holes in the Table Mounting Plate. There are two sets of holes depending which of the two orientations are to be used. (Figure B&C)

Triangles: Holes for Orientation Left (Figure C)

Rectangles: Holes for Orientation Right (Figure C)

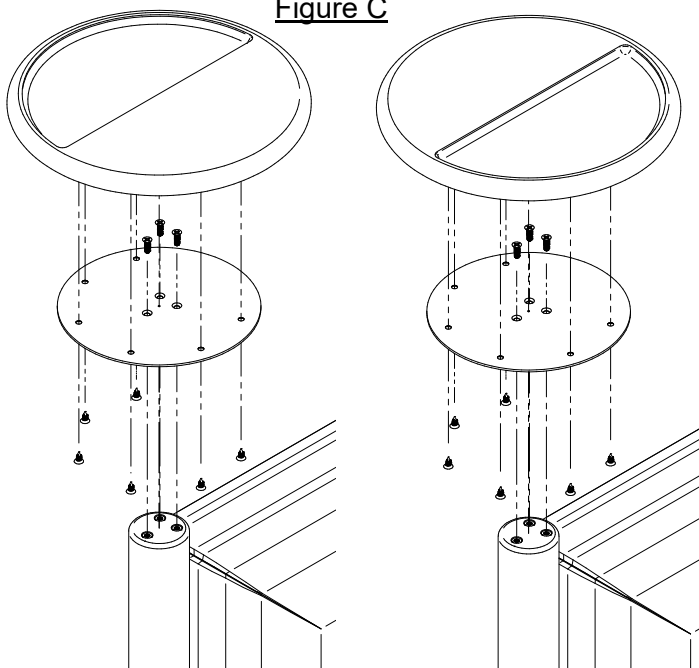
Figure B



RIGHT

Figure C

LEFT

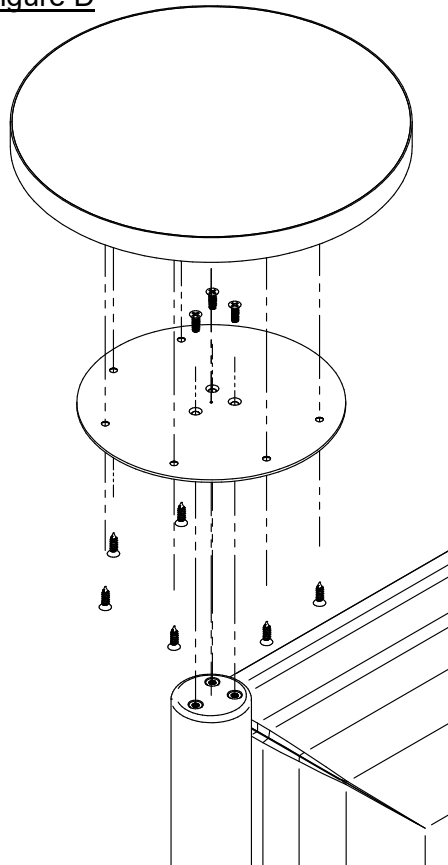


- Using the #2 Phillips screwdriver or a cordless drill with a #2 driver, drive the six (6) #8 x 3/8" long screws. See Figure C. Do not overdrive the screws so that they spin loose in the pilot hole.
- On models with two beverage tables, repeat steps 1-4 for the table on the opposite side.

Laminate Beverage Table Mounting Instructions

- Table Mounting Plate is installed as described.
- Align pre-drilled holes in the bottom of the Laminate Beverage Table with the holes in the Table Mounting Plate.
- Using the #2 Phillips screwdriver or a cordless drill with a #2 driver, drive the six (6) #8 x 5/8" long screws. See Figure D. Do not overdrive the screws so that they spin loose in the pilot hole.
- On dual beverage table models, repeat 1-3 for the table on the opposite side.

Figure D

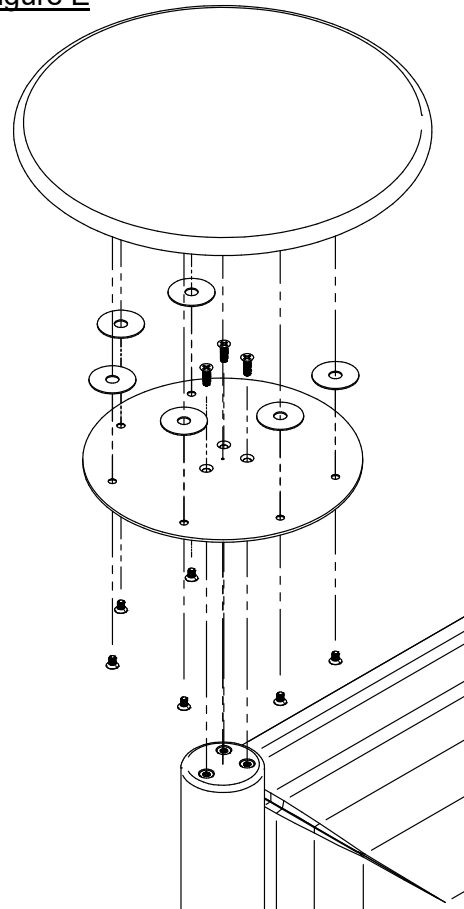


Solid Surface Beverage Table Mounting Instructions

- Table Mounting Plate is installed as described.
- Place the six (6) 1-1/8" diameter neoprene washers on the top surface on the Table Mounting Plate as shown in Figure E. Countersink mounting holes in the plate to align with the center of the washers.

- Align pre-drilled holes in the bottom of the Solid Surface Beverage Table with the holes in the Table Mounting Plate. Solid Surface Beverage Table is not handed and only goes on one way.
- Failure to use the washers as described above can cause damage to the solid surface beverage table. Do not continue until washers are in place.
- Using the #2 Phillips screwdriver or a cordless drill with a #2 driver, drive the six (6) #8-32 x 3/8" long machine screws. See Figure E.
- On dual beverage table models, repeat 1-5 for the table on the opposite side.

Figure E



Finishing Instructions

- Without using the Beverage Table to move/lift/pivot the lounge, move the lounge into its final location.
- Confirm screws are driven so that they are secure and not loose.
- Confirm the Beverage Table is secure to the Table Mounting Plate.