

# Pod Utilization + Placement Guide

A SMART TOOL



NATIONAL®



# This placement guide highlights how Kimball International's extensive research and experience in acoustics translates to our pod offering.

Kimball International collaborated with research specialists\* to truly understand the authentic and real elements that drive employees. Whether specifying products for a new project or integrating our pod solutions into an existing floorplan, this guide shares the benefits of pods and how to make the most of your investment. This guide includes research and real-life experience that can be used across all market segments and throughout a variety of floorplans.

Built by family and rooted in heart, Kimball International cultivates care and connection with our employees, customers, and our communities. We leverage our market-centric expertise and a unique portfolio of brands to deliver customized solutions and personalized service. Design is the cornerstone in all that we do. And with our design-focused approach to product development, we create seamless physical and digital user experiences that help us connect with the user.

As a result of our research, we've uncovered that having a choice in where to work during the average day is unequivocally associated with higher performance. That flexibility is the driver that boosts happiness and productivity. By incorporating the right mix of furniture solutions, privacy, and human-focused elements, it's easy to create spaces that are inviting, personal, and functional...creating a culture that people want to be a part of. Our National Pods can aid in improving these results, ultimately leading to an increase in overall happiness and camaraderie among employees and guests.

## TABLE OF CONTENTS

Why Pods .....	5
A Pod for Every Setting .....	13
Knowledge is Power .....	23
6 Space Types .....	27
Creating Places to Belong .....	43

\*Kuchar is a boutique interior design studio located in Chicago, IL that specializes in commercial, residential, and hospitality design. DesignIntelligence is an independent and unbiased source of knowledge and insight for leaders across the design continuum. Ipsos is a global leader in market research that delivers reliable information and a true understanding of society, markets, and people.







# Why National Kolo Pods and Om Pods?

## A NATIONAL POD FOR EVERY SETTING

With built-in power, comfortable ventilation, and personalized lighting at the touch of a button, our pods provide a turnkey solution for any space and user need. From single person, sit down or stand-up pods, to larger pods that accommodate multiple guests and ADA-compliant models, pods offer a variety of solutions.

Now, privacy is accessible to everyone.

## KNOWLEDGE IS POWER

We're inquisitive. At Kimball International we focus on all markets – workplace, health, and education. By partnering with research specialists, we've discovered emerging trends in these markets. Through this research, we can empower you to design spaces that will support environments for today, and tomorrow.

## 6 SPACE TYPES

To further expand on those research findings, we have outlined 6 fundamental space types that can accommodate employee, guest, and employer needs. These space types are purposeful settings that can be used to create a multitude of environments for a variety of users. Whether the task at hand is collaborative or more of a solo situation, a mix of environments that include our pods make it easy to navigate this evolving landscape and enhance employee experience, engagement, retention, and satisfaction.

## CREATING PLACES TO BELONG

Informed by this research, we learned that now, more than ever before, employees crave connections. From interacting with coworkers and mentors to having an attachment to the space they occupy, this feeling can't be underestimated. By acknowledging that the workplace has a greater purpose, employees can show up as their authentic and unique selves. Creating a place where employees feel comfortable and productive is essential to making employees feel valued.





1

**ROLLING TECHNOLOGY**

Our Kolo Pods and Om Pods can be rolled anywhere in the office for total flexibility across your entire floor plan. This gives facilities the freedom to adjust their environments to meet evolving needs. For stability and maximum durability, the ADA-compliant pod's ramp and floor are constructed from one piece of steel and the ramp was designed to be as unobtrusive as possible. These features do not allow the ADA-compliant pod to be mobile.

2

**ANTI-EAVESDROP DESIGN**

Each pod is designed to keep confidential conversations, phone calls, and video conferencing completely private.

3

**AIRFLOW**

The integrated fans pull clean air from above the pod and recirculate it every 90 seconds to 3 minutes, depending on the model. We recommend allowing 9" of space above the pod to allow for sufficient air circulation.

4

**SAFETY GLASS**

Laminated safety glass helps reduce reverberation and echo while creating a seamless look.

5

**BUILT-IN POWER**

Each pod includes a combination of charging outlets, USB outlets, and data ports for complete flexibility in power and data solutions.

6

**PLUG + PLAY**

Simply plug the power cord into any grounded 15A outlet and get right to work.



# What to Look for When Specifying a Pod



Connectivity



Anti-Eavesdrop



Light and Energy Use



Sustainability Attributes



Portability Flexibility



Ventilation



Design Aesthetics



Assembly Installation



In Stock and Ready to Ship



# Why Kolo Pods and Om Pods are the Best in the Market

With the highest quality materials, an industry-best NIC rating, and the widest assortment of pods and phone booths in the market, our Kolo Pods and Om Pods are lightyears ahead of the competition. We offer a Limited Lifetime Warranty on all of our pods so you can feel comfortable making an investment in our pod collections.

FEATURE	KOLO POD	OM POD
Assortment of pods for 4 - 8 people	✓	
ADA-Compliant Model	✓	
Built-In Rollers are Included at No Additional Cost <small>Except on our ADA-compliant model</small>	✓	✓
Steel + Glass Construction	✓	✓
NIC Rating <small>Measures the total sound insulation performance between two rooms. A higher value equals more speech privacy and sound dampening.</small>	33dB	32dB
Price Includes Freight	✓	✓
UL 962 Listed <small>Verifies that commercial furnishings meet electrical, flammability, and personal injury safety requirements.</small>	✓	✓
Ethernet Port Included	✓	✓
Motion-Activated Fan Ventilation System	✓	✓
Dimmable, Motion-Activated LED Light	✓	✓
SCS Indoor Advantage Gold Certified <small>Certification for low VOC emissions with the most transparent indoor air quality (IAQ) standard for furniture and building materials.</small>	✓	✓
In Stock + Ready to Ship	✓	✓
Limited Lifetime Warranty	✓	✓
Power Outlets Included	✓	✓



# Key Indicators

Through our research-based approach, we've discovered key indicators that helped formulate our views. These indicators can help our customers create inspiring spaces that promote engagement, well-being, and a heightened sense of employee or occupant happiness:

- Understanding that activities requiring a higher level of engagement may need a pod for privacy vs. basic day-to-day interactions. Understanding productivity stats of the occupants and how the spatial allocation can be revised to improve performance.
- Observing the productivity of the employees and how the spatial allocation of pods can be recommended to improve performance.
- Realizing that burnout is an issue, offer solutions that create positive moments during the workday.
- Recognizing that the need for video conferencing is a more recent function required for today's work environment and that pods can create unique and private spaces.
- Increasing quantities of short-term leases could drive a desire to minimize the total investment in the built environment vs. product solutions that can provide a similar function but can move with the business.
- Having flexibility in the floorplan is necessary and can be accomplished with our pods because the majority of the models are mobile.







# A pod for every setting.

FEATURE	PODS FOR 1 (OM, KOLO 1, KOLO 1+)	PODS FOR 2-4 (KOLO 2, KOLO 2 ADA*) <small>*Suitable for any size office that requires an ADA pod</small>	PODS FOR 4-8 (KOLO 4 + 6)
Up to 15			
16-30			
31-45			
46-60			
61-75			

### PROXIMITY & QUANTITY

You've decided to incorporate pods, but you're not sure what style, size, or how many are right for your needs. First, let's better understand your situation so you can find the right pod solution.

### WHAT ARE YOUR GOALS?

- Create a beautiful, functional workspace meant to be shared?
- Offer the opportunity for individuals to do private work?
- Create inviting spaces for teams to collaborate?
- Design a workspace that reflects the brand's aesthetic?



# The Setting

## EMPLOYEES NEED MORE PLACES FOR FOCUSED WORK.

You've found people working in conference rooms in an attempt to get some peace and quiet or your employees want to work from home to avoid office distractions. Maybe you've even noticed people wearing noise-canceling headphones to give their coworkers a hint. Sounds like your problem is that your office doesn't have enough quiet spaces for your employees to do private work.

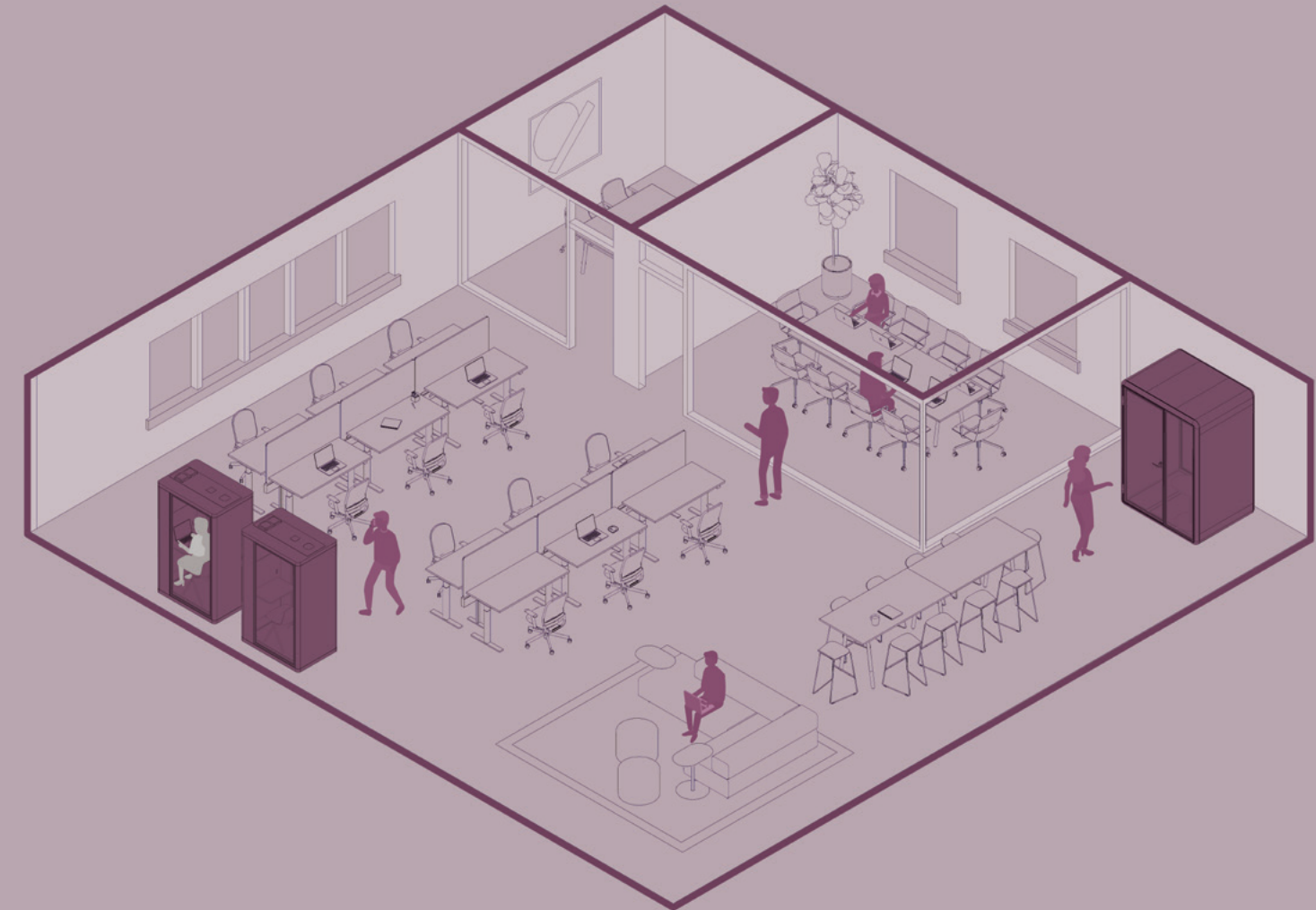
# Our Solution

## PROVIDE EMPLOYEES WITH INDIVIDUAL PODS FOR PRIVATE WORK.

Try our Om Stand, which is perfect for quick work sessions, or our roomier Kolo Pod, which is comfortably designed for extended work. We recommend 1-2 pods per every 15 employees.

## WHERE IS THE BEST PLACE TO PUT A KOLO POD OR OM POD?

Place your pods near personal work areas so they are top of mind when people need a more focused spot. Every pod comes equipped with built-in rollers so you can move it anywhere in office.



## PRO TIP

The more busy and bustling your office, the more pods you will need to provide sufficient space for quiet concentration.



# The Setting

## EMPLOYEES NEED A DESIGNATED POD FOR PRIVATE CONVERSATIONS.

You've noticed employees taking personal calls and having confidential conversations in hallways or conference rooms meant for large groups. Maybe you're actively involved in a virtual hiring process, and HR needs a place to discuss sensitive information with candidates. Sounds like your employees need spaces for individual or group discussions.

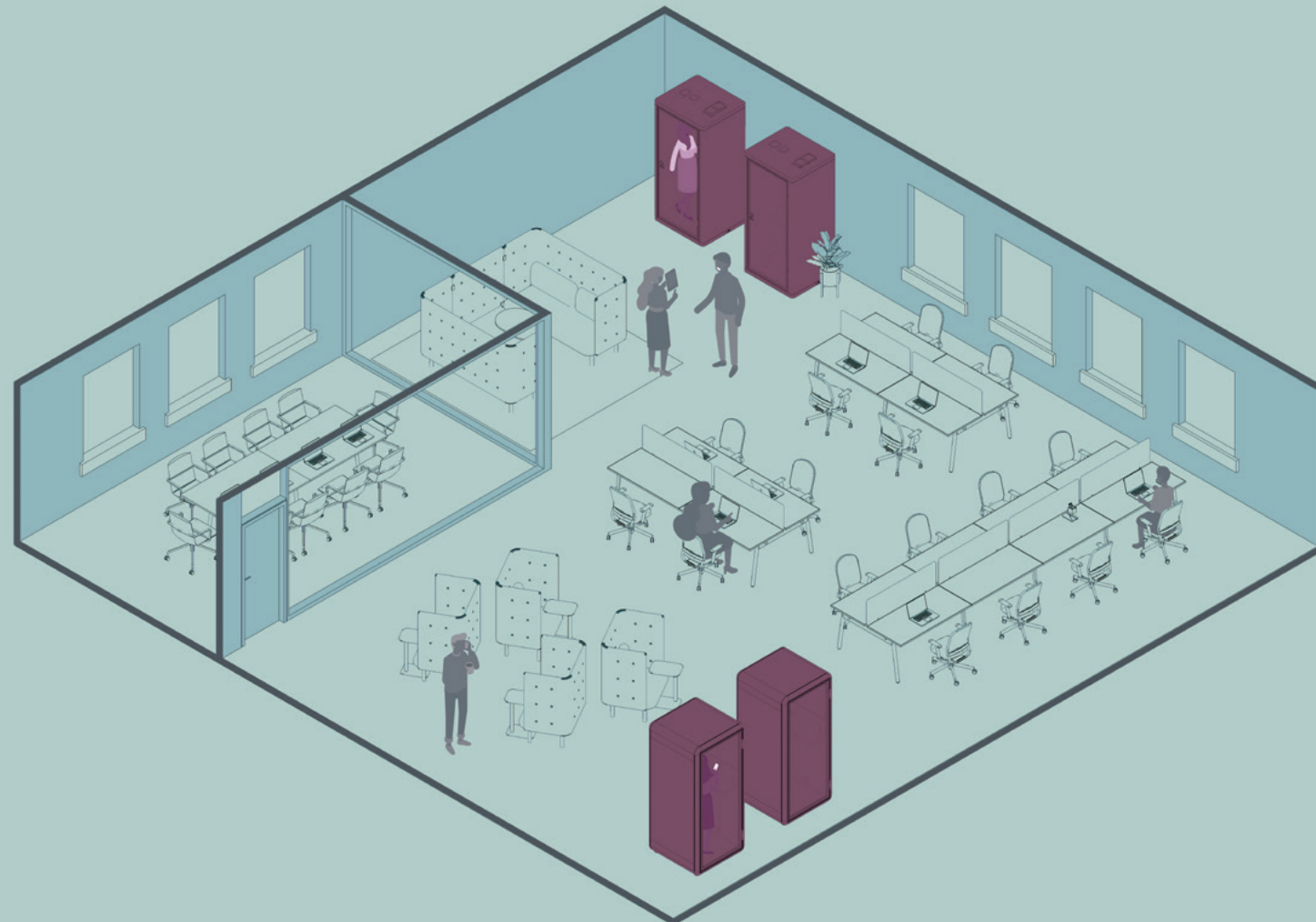
# Our Solution

## CREATE EASILY ACCESSIBLE PLACES FOR PRIVATE CONVERSATIONS.

Our Om Stand model is perfect for quick chats and speedy syncs, while our Kolo Pods has enough room for employees to get comfortable during long video calls and meetings. We recommend 1-2 pods for every 15 employees.

## WHERE IS THE BEST PLACE TO PUT KOLO PODS AND OM PODS?

Place your pods near the departments that will be using them most so they can easily drop in for some quiet time when needed. Avoid placing them in the direct line of sight of personal workspaces to provide a visually private environment.



### PRO TIP

No worries if your floor plan doesn't support a visually private placement. Simply add on some privacy decals to create the right environment for private conversations.



# The Setting

## THERE ARE NO ROOMS AVAILABLE FOR SMALL GROUP MEETINGS IN YOUR OFFICE.

You like to foster an environment of open communication in your office, so naturally, your employees often have one-on-one meetings with their supervisors. You've noticed that when these occur, there are no dedicated spaces available, so employees find themselves using large conference rooms for small meetings.

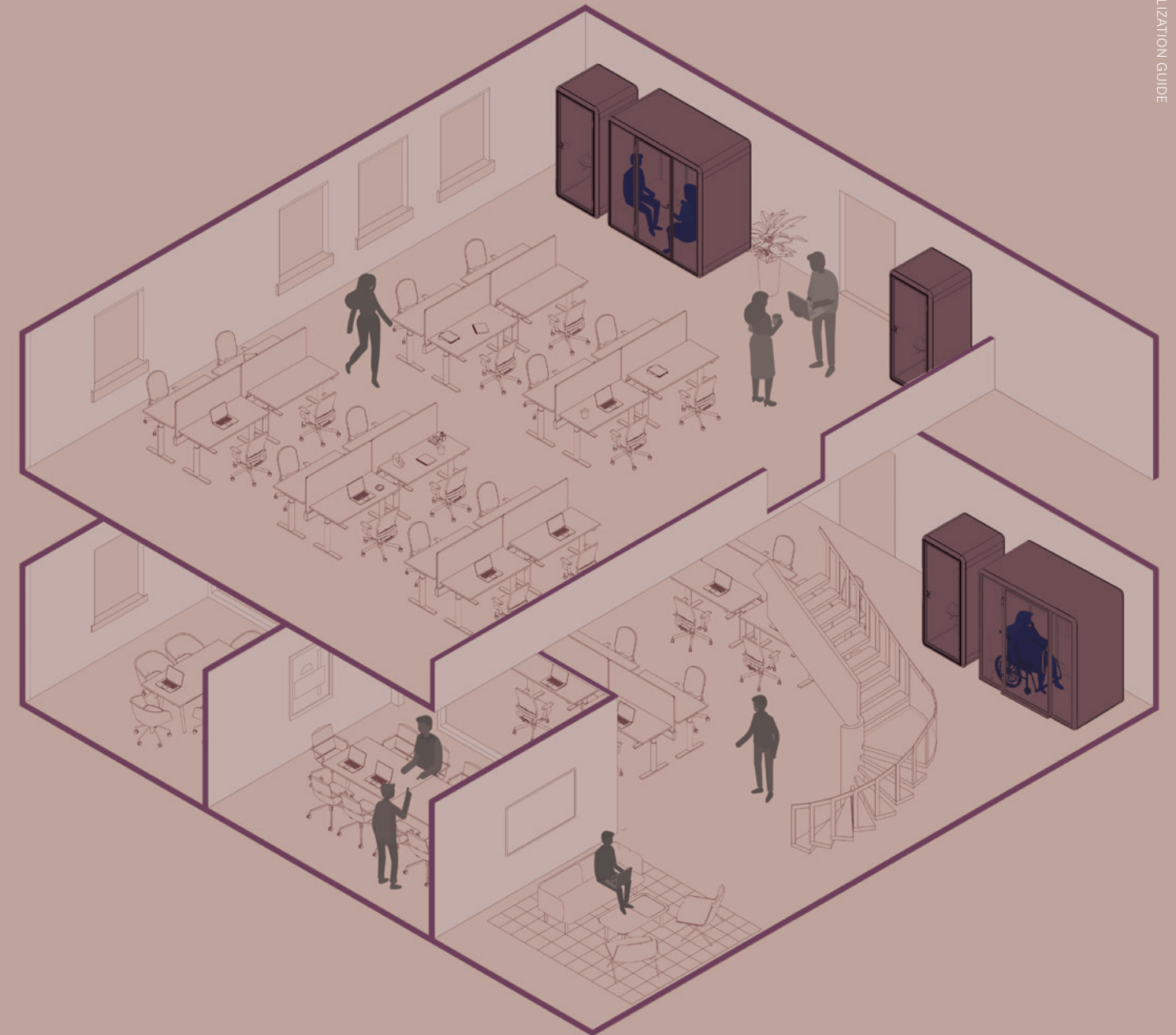
# Our Solution

## INTRODUCE DEDICATED PODS FOR SMALL GROUP MEETINGS.

Our Kolo 2 Pod and our ADA-Compliant Kolo 2 Pod models provide the spaces needed for one-on-one meetings and small groups. Our ADA-Compliant model comes loaded with features like an automatic door assist, t-shaped turnaround, and a fold-down worksurface and benches so that privacy can be accessible to all. We recommend ADA pods as needed.

## WHERE IS THE BEST PLACE TO PUT OUR PODS?

By spacing your pods throughout your office, you can encourage employees to move around the office, rather than staying sedentary at their desks. Encouraging employees to move throughout the office creates the right environment for impromptu conversations and collaboration.



### PRO TIP

The more busy and bustling your office, the more pods you will need to provide sufficient space for quiet concentration.



# The Setting

## YOU NEED MORE PLACES FOR EMPLOYEES TO MEET AND TAKE CALLS.

In your office, not being able to find an available conference room is a regular occurrence. You've noticed employees frantically searching for places to meet. Maybe you've even taken over a conference room only to be interrupted by a knock at the door and a "We have this room reserved..." type of speech. Sounds like you just don't have enough conference rooms...but who has the time (or the money) for a big construction project?

# Our Solution

## CREATE ADDITIONAL CONFERENCE ROOMS, WITHOUT THE COST OF CONSTRUCTION.

Our Kolo 4 Pod fits up to six people for meetings and collaboration sessions, while our Kolo 6 Pod fits up to eight people for larger meetings and presentations. For our larger pods designed for groups, we recommend 1 pod per every 20 employees, starting at 50 employees.

## WHERE IS THE BEST PLACE TO PUT OUR PODS?

Position your Kolo Pod or Om Pods along frequently traveled corridors so employees can pop in at their convenience.



### PRO TIP

Position your pod so that its door opens toward people to create an inviting environment.





# Knowledge is power.

As we continue to dive into research-based insights and try to understand what drives happiness, wellness, and overall productivity, we have learned that many factors should be taken into account. Throughout this learning process, one thing was clear – people crave connections. From interacting with individuals, teammates, and leadership to feeling at home in the space they occupy, that connection is a factor that can't be ignored.

We established four elements that help to build this feeling of connection when designing environments and creating places to belong:

**BALANCING HYBRID ENVIRONMENTS:** Collaboration and connection happen within the workplace, so users want choices of spaces that support a variety of activities.

**PRIORITIZING FLEXIBILITY:** Visualize the potential within spaces by thoughtfully designing environments that are able to shift and evolve to be responsive to future needs.

**FOCUSING ON INCLUSION AND BELONGING:** Facilitate a sense of belonging by creating culturally compelling and engaging places that support all types of users throughout their purpose.

**SUPPORTING HEALTH AND WELL-BEING:** By placing physical and mental health as a top priority, create spaces that support overall wellness and mitigate burnout.



#### KUCHAR: THE FUTURE OF THE OFFICE

We discovered the inherent strengths of physical office spaces and how an emphasis on safety and flexibility allows employees to thrive.



#### IPSOS: UNDERSTANDING THE EVOLVING WORKPLACE

Exploring how space types can meet expectations and demands of the workplace after the pandemic and into the future.



#### PRO TIP

For some employers, a hybrid model provides the opportunity to reduce their footprint by offering fewer overall workspaces. Touchdown areas can be utilized in rotation by multiple employees, removing dedicated spaces but adding flexibility. Organizations may need to creatively resize their office footprint to accommodate co-working spaces and remote workers.



# Responsive Design

The research we conducted led us to better understand employee needs. We found that one message was consistent - no matter the end market, design must be responsive. When we took a closer look, we discovered four trends.

The 4 Ps - Pliability, Performance, Power, and Placement - must be considered to develop spaces that can be truly responsive to users' needs and provide an optimal experience.

## PLIABILITY

More than flexibility and adaptability, pliability encompasses a wide variety of changes. From micro changes (such as adding a screen for safety) to macro changes (like reconfiguration for improved workflow) a pliable environment is one that is intentionally designed to change and adapt to the unknown future.

## PERFORMANCE

Safety, durability, sustainability, and protection are key indicators of performance. Products that are better for the interior environment AND the planet are an expectation for designers and owners. Recent studies have shown that Environmental, Social, and Governance (ESG) is a critical factor in attracting top talent in all industries.

## POWER

It goes without saying that power is now a requirement. Perhaps in the future, power and data will all be a part of the metaverse, but today (and the foreseeable future), power reigns supreme. Tied closely with flexibility, lack of easy access to power and data, both wireless and wired, can be an incredible dissatisfier in an environment.

## PLACEMENT

Furniture placement can appear haphazard and lead to inefficiencies in workflow if not fully thought through. Tied directly to placement, our live design charrette tool, Elevate, provides a measured approach to intentionally designing for change, incorporating performance factors, and integrating power and data. Our Elevate process minimizes time and increases opportunities to improve the user experience.





# 6 Space Types.

To further expand on our research findings, we leveraged the insights and discovered that there are 6 fundamental space types that can accommodate employee, guest, and employer needs. Based on Pliability, Performance, Power, and Placement (the 4 Ps), these space types are purposeful settings that can be used to create a multitude of environments for a variety of users.

From working from home to flexible work schedules to those desiring a return to the office, organizations have been challenged with accommodating ever-changing needs. By including these 6 space types in a facility, it's easy to navigate this evolving landscape and enhance employee experience, engagement, retention, and satisfaction.



#### PRO TIP

The way we work is changing—and workspaces are changing, too. Think outside the personal workspace with spaces that inspire creative thinking and productivity. Conference rooms, cafés, and meeting spaces can be reimagined with privacy pods for 1, 2, 4, or more.

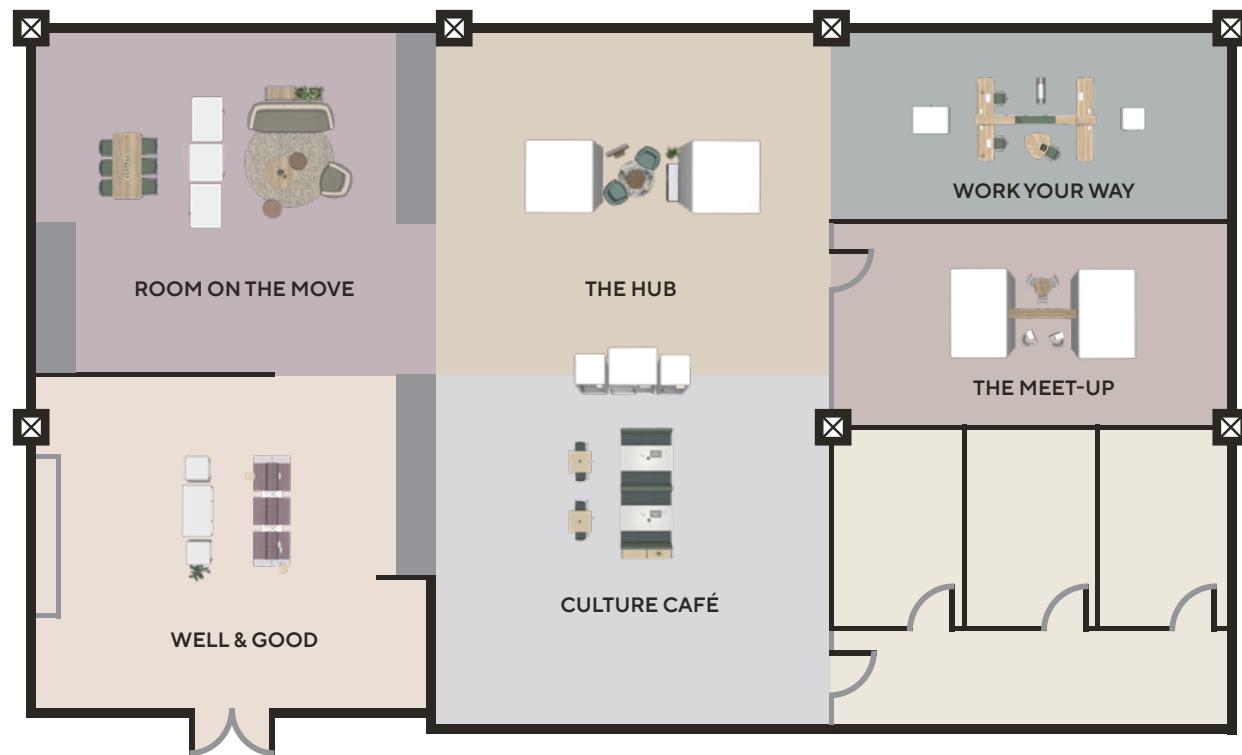




# 6 Space Types

The office still serves as the site where employees come together to interact, collaborate, and socialize.

It is the foundation for creating a company culture and in-person connectivity. With camaraderie and connection noted as the most missed aspects of daily office life, providing welcoming spaces to rebuild a sense of community is critical for workers returning to the workplace, even if it's on a hybrid schedule.



## THE HUB

Often described as the heartbeat of the office, the Hub supports socialization and connectivity. These spaces are often designed with comfortable, casual, and eclectic pieces.



## CULTURE CAFÉ

These spaces play an important part in defining an organization's brand and culture, as well as creating a positive customer experience. They offer a variety of seating options for meeting, catching up, and grabbing a bite to eat.



## WORK YOUR WAY

These workspaces support users throughout their workday. From spaces with visual and acoustical privacy to informal meeting areas, these destinations accommodate planned and impromptu interactions.



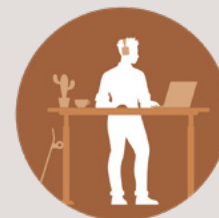
## MEET-UP

Tech-savvy spaces that support coming together, in-person or virtually. These conference rooms and huddle spaces are highly functional and encourage collaboration and problem solving.



## ROOM ON THE MOVE

Versatile and movable furniture solutions allow these spaces to easily transition. Promote learning, training, mentoring, and hands-on activities by offering these flexible spaces.



## WELL & GOOD

Promote employee well-being and safety with spaces and programs dedicated to overall health. These areas include yoga and meditation spaces or more personal needs like a mother's room.



# The Hub



## The Hub Supports Socialization and Connectivity

These spaces are often designed with comfortable, casual, and eclectic pieces. Creativity-inducing spaces offer hands-on activities that engage the mind and offer an opportunity to reduce stress. These dynamic spaces provide a location to relax and connect or a comfortable niche to be alone while still among others.

Our Kolo Pods and Om Pods are an ideal solution to create these valuable environments without the added cost to build out hard walled spaces. They easily provide comfort that allows all users to remain connected to the larger space, yet have private accommodations.

Contributing to occupant comfort, all Kolo Pod and Om Pod lighting is dimmable, making it easy to create an ideal and personalized environment.

Privacy is also now accessible to all. Our ADA-compliant Kolo 2 Pod features a t-shaped turnaround, anti-slip floor, and a fold-down worksurface and benches. The door opens with a light touch and closes automatically, promoting inclusivity to all employees and guests alike.

## The Pod Solution

- Every Kolo Pod and Om Pod are equipped with motion-activated, dimmable lighting as well as built-in power and data options. The pods facilitate conversation or individual solitude by offering quick access to comfortable spaces within the built environment.
- Utilize a variety of ancillary furniture solutions inside the pods to support a wide range of workstyles or activities. From beanbags and ottomans, to height adjustable desks and task chairs, we've got you covered.
- Within student commons as well as open concept areas, focus spaces create private coves for heads down time. Offering visual and audio privacy, these nooks are essential to student success.
- Many facilities anticipate a rise in expectations to offer spaces that support whole body wellness, specifically mental health.



### PRO TIP

Ever heard of an office with too many conference rooms? We haven't either! Designed to offer the choice for peace and quiet in the open office, Kolo 2 Pod gives your team the opportunity to control their environment to the fullest. Pop in for focused work, a one-on-one, or even a meeting with up to four people.



# Culture Café



## The Pod Solution

- Position single pods in a row between ancillary spaces to create separation between and access to a variety of privacy solutions for guests and users.
- To create dual-sided entry access, alternate pod placement with glass entry doors facing opposite directions. This allows for simple entry from both sides.
- Leverage mobility with standard rollers to easily and gracefully move throughout an entire floorplan.
- Partial frost and full frost privacy decals or custom decals can be sourced locally to apply on the glass walls or doors for additional visual privacy, or to customize with company or university branding.



Learn more about the decal process.



### PRO TIP

Let your branding shine through by celebrating company culture with custom decal applications.

## Kolo Pods and Om Pods Offer the Opportunity for Respite, Collaboration, or Solitude

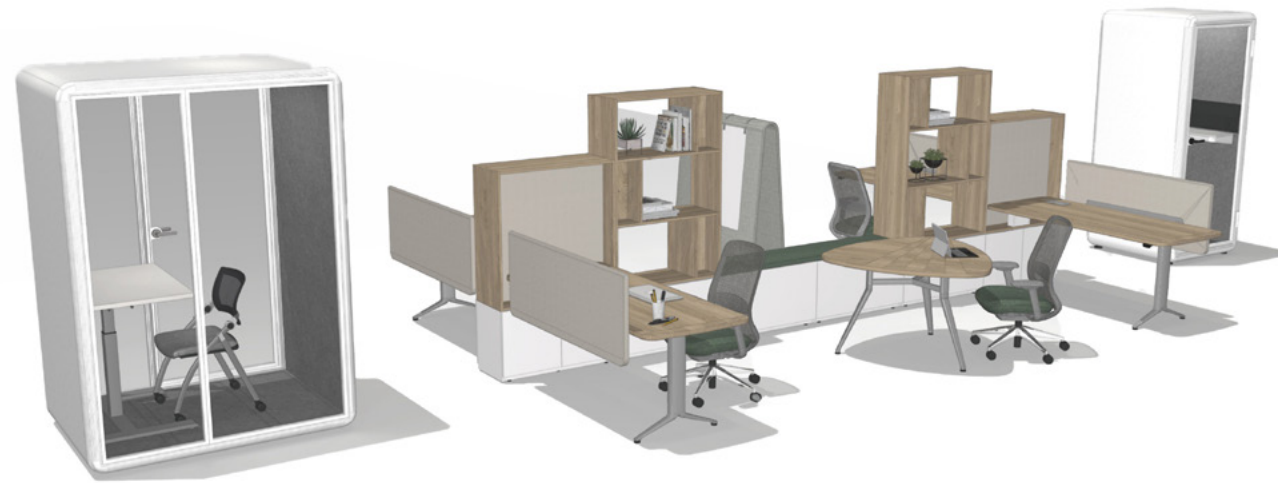
These spaces play an important part in defining an organization's brand and culture, as well as creating a positive customer experience. They offer a variety of seating options for meeting, catching up, and grabbing a bite to eat.

Within higher education, students and staff can grab a quick moment of quiet in-between classes, or an opportunity to continue team project collaboration without losing focus.

In a healthcare facility, this is a prime location for private dictation or catching up on phone calls and messages over a coffee break, while still being a part of the open plan.



# Work Your Way



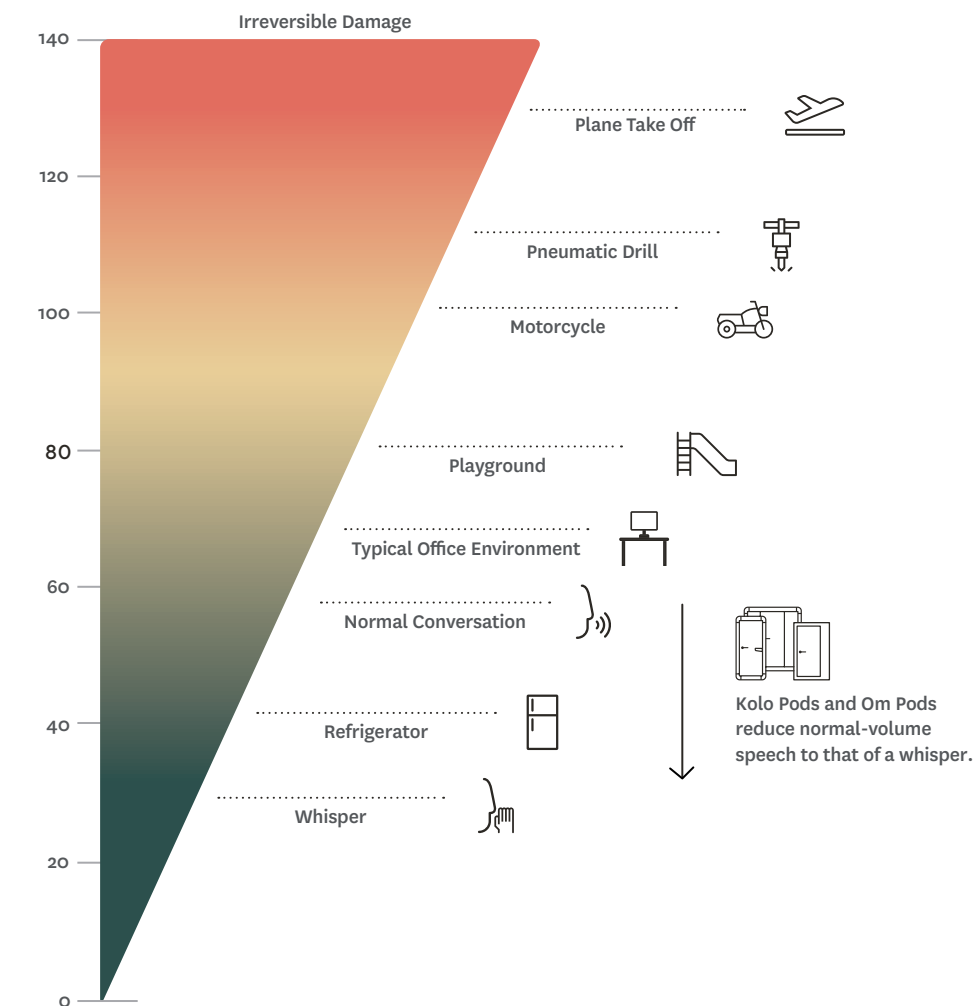
## Need a New Way to Work in the Open Office?

Designed to offer a quiet space in an open environment, our pods are a turnkey solution to creating privacy in any Work Your Way setting. These workspaces support users in spaces with visual and acoustical privacy for informal meeting areas and accommodate planned and impromptu interactions. Employees also want to be able to customize their workdays, so employers need to provide a range of settings to work in while in the office.

Just how quiet are they? Our Kolo Pods and Om Pods can take a conversation at a normal volume (about 60dB) and reduce it to that of a whisper (about 27dB). Based on third-party testing, the Kolo Pods and Om Pods have a Noise Isolation Class (NIC) rating of 32dB and 33dB, respectively. This means they reduce noise by up to 33 decibels. This exceeds BIFMA's suggested NIC rating of 25dB, making our pods one of the quietest on the market.

## The Pod Solution

- Employees expect to be given choices in how, when, and where they work within a space. Having an assigned workstation adjacent to a privacy pod provides a solution to this expectation.
- Select any Kimball International ancillary furniture solutions to complete your pod. From guest seating to lounge solutions to task chairs, create a space to accommodate a hub of productivity or a moment of calm.
- Pods feature a dark gray, sound-absorbing PET lining and have been designed to dampen the sound of conversations, creating a quiet, more productive work environment.



### PRO TIP

Stepping inside a pod means never having to worry about confidential conversations being overheard again. Our pods enhance noise reduction. Our Anti-Eavesdrop Design reduces speech intelligibility and dampens sound by up to 33 decibels so you can speak freely.



# The Meet-Up



## Tech-Savvy Spaces That Support Coming Together

Whether in-person or virtually, these conference rooms and huddle spaces are highly functional and encourage collaboration and problem-solving. Employees want a range of meet-up room styles that provide a variety of postures, uses, sizes, and technology needs.

Most employees feel that collaborative group work should be face-to-face, however, in our new world that is not always a possibility. Creating meet-up spaces that can provide an equitable experience for in-person, virtual, or hybrid attendees improves the experience for all. Our Kolo Pod and Om Pod models provide a variety of pod applications covering a range of sizes and possible functions.

## The Pod Solution

- Utilize a variety of Kimball International seating, tables, and accessories inside the Kolo 4 Pod to invite casual team conversation or create a space for meaningful heads-down work.
- Power outlets make it easy to power height adjustable tables, conferencing equipment, personal devices, and screens for remote meetings.
- Glass surfaces double as a dry erase board to make the most of available workspace.



### PRO TIP

A Kolo 4 Pod is the perfect place for a small team to meet. Anti-eavesdrop technology keeps the rest of the space peaceful, and the air inside is completely refreshed every three minutes, depending on the model.



# Room on the Move



## The Pod Solution

- Position single pods in a row between ancillary spaces to create separation and access to privacy.
- Leverage the option of mobility with rollers to move flexibly throughout an entire floorplan.
- To allow for easy entry from both sides, alternate pods with glass entry doors facing opposite directions. This creates dual-sided entry for shared spaces.
- Utilize the Om Stand Pod to stretch out your legs during a private video call or heads down work.
- Add ancillary products such as mobile tables, task seating, wall-mounted markerboards, technology, and storage to support a space where multiple tasks can happen, individually or together.



See how it works.



## Versatile and Movable Furniture Solutions Allow These Spaces to Easily Transition

Promote learning, training, mentoring, and hands-on activities by offering these flexible spaces. Flexible furniture solutions give spaces the opportunity to morph and transform to support different functions throughout the course of the day – like large group training, smaller focus groups, or individual work.

To accommodate this highly flexible need, our pods come equipped with standard easy-to-use rollers. Simply unlock them with an Allen wrench and you can roll your pod anywhere in the office. Perfect for a room on the move or hybrid office arrangements!

This breakthrough built-in base roller technology is engaged when the pod is lowered onto the rollers. When the rollers are engaged, the pod will move back and forth, or left and right, depending on the model. To turn the Pod, simply push it — the rollers are designed to slide when engaged.



### PRO TIP

Some workdays you just have to roll with it—literally. The Om Sit Pod and Om Stand Pod can be moved around anywhere in your office for focused work, a confidential phone call, or just a moment of personal zen.



# Well & Good



## Employee and Guest Well-Being

Promoting employee and guest well-being and safety through spaces and programs dedicated to overall health is an ideal part of the design strategy. These areas can include more secluded yoga and meditation spaces, private personal needs like a mother's room, or simply a space tucked away to the side where someone can escape the hustle and bustle and enjoy some quiet time.

Incorporating pods into these spaces provides a mental health break, yet still offers the same wellness benefits of visible access to natural daylight, and an opportunity to regulate personal temperature.

When utilized in a community healthcare space, creating a comfortable environment for personal relaxation, respite, and reflection while waiting for an appointment or family member is ideal and can reduce additional stressors.

## The Pod Solution

- Promote comfort and a sense of safety within an open floor plan by incorporating phone booths, small meeting spaces, and flexible lounge solutions.
- Our Kolo Pod offers a group space for privacy, group discussion, or collaboration.
- Incorporating an Om Stand Pod provides the opportunity to work or take a quick phone call while standing, which promotes increased concentration and reduced stress.



### PRO TIP

Combine pods with lounge seating to create a space for guests and employees to remain in the same general area to conduct focused work, make a quick phone call, or just take ten minutes to themselves.



# Creating Places to Belong.

VIDEO:  
Connecting to a  
Greater Purpose

Kourtney Smith  
Chief Operating Officer



## CREATING A PLACE WHERE EMPLOYEES FEEL LIKE THEY BELONG IS MORE THAN PROVIDING A WORKSPACE

It's about connecting to a greater purpose and supporting individual needs. It's about balancing hybrid work, prioritizing flexibility, supporting inclusion and belonging, and focusing on overall health and well-being.

Kimball International believes it's essential to create environments where each employee feels valued. From adaptable spaces designed to support a variety of users and activities to carefully curated nooks that focus on individual satisfaction and feeling fulfilled, workplaces must accommodate employee needs and include elements that create a successful environment.

We collaborated with research specialists\* to truly understand the authentic and real elements that drive employees. We learned that now, more than ever before, employees crave connections. From interacting with coworkers and mentors to having an attachment to the space they occupy, this feeling can't be underestimated. By acknowledging that the workplace has a greater purpose, employees can show up as their authentic and unique selves.

\* Kuchar is a boutique interior design studio located in Chicago, IL that specializes in commercial, residential, and hospitality design.

\* DesignIntelligence is an independent and unbiased source of knowledge and insight for leaders across the design continuum.

\* Ipsos is a global leader in market research that delivers reliable information and a true understanding of society, markets, and people.



## LEARN MORE

Learn how Kimball International created their path forward through personal stories, insights, conversations, and inspiration.



## PRO TIP

In our research, we found that 26% of employees felt that exposure to leadership was reduced while working remotely and delayed their career growth by not being around mentors and leaders. Supporting individual needs and providing flexibility through product application within a space can help create a thriving work environment.





## Creating Places to Belong with Pods

Designed to offer the choice for peace and quiet in open settings, Kolo Pods and Om Pods are ideal solutions for learning, working, and healing spaces. Employees and guests alike want safe spaces that can flex to support privacy and focus or connection and collaboration. Our pods create places to belong by offering flexible solutions that can be used for a mix of workstyles and activities to support individuals and their unique needs.

Workplaces, educational environments, and healthcare facilities may need to redesign their space to offer the right mix of flexible settings. From touchdown spaces to meeting rooms that incorporate technology for hybrid workers, the way work happens has changed. With a focus on employee and occupant wellness, companies are retrofitting their physical offices as well as providing virtual solutions that support employees, wherever they work, learn, and heal.



## Kolo Pod

Ever heard of an office with too much variety or too many meeting spaces? Neither have we. That's why we designed the Kolo Pod. As the latest and greatest innovation in office phone booths, the Kolo Pod gives your team control over their environment with no contractor required! It's designed to offer a quiet space within office environments for focused work, one-on-one meetings, and gatherings with up to six people. Available in five sizes and an ADA-compliant model, you'll be certain to find the right pod for working, learning, and healing environments. Made with best-in-class materials and backed by our Limited Lifetime Warranty, the Kolo Pod is always in stock and ready to ship.



[View the Kolo Pod collection](#)



## Om Pod

Open office environments can increase team productivity and collaboration, but only if the layout includes a designated space for privacy. The Om Pod is designed to maximize an open office space by providing a quiet haven for privacy. The Om Sit and Om Stand solutions easily accommodate individuals who want peace and quiet in working, learning, and healing environments. Ideal for a quick phone call, lengthy video chat, or anything in between, the Om Sit Pods and Om Stand Pods are made with best-in-class materials, backed by a Limited Lifetime Warranty, and always in stock and ready to ship.



[View the Om Pod collection](#)







NATIONAL.

800.482.1717  
kimballinternational.com  
©2023 Kimball International, Inc.  
All rights reserved.  
NBRPODGUIDE23

