

PACT

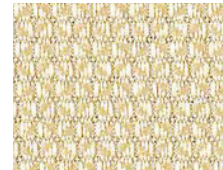
Vertical Textile Collection – Grade B



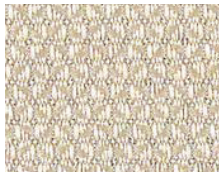
Pact Calla



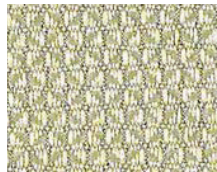
Calla



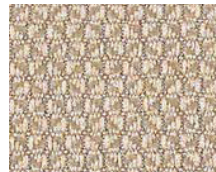
Toasty



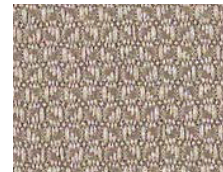
Putty



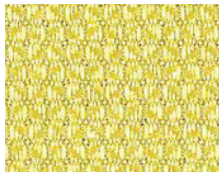
Aloe



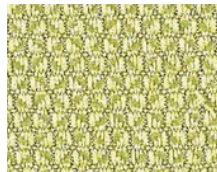
Taupe



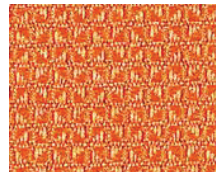
Lily



Lime



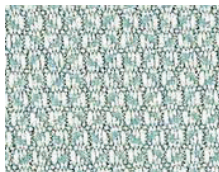
Fern



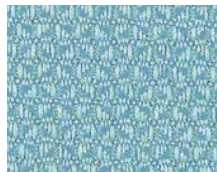
Nectar



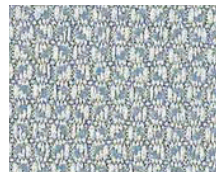
Roma



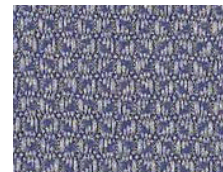
Coastal



Azure



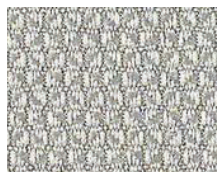
Harbour



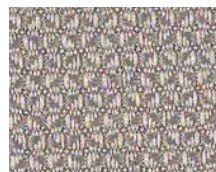
Delft



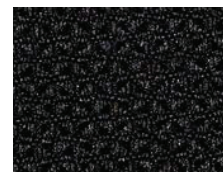
Dove



Patina



Sketch



Midnight

PACT

Grade	B
Content	65% Post Industrial Recycled Polyester, 35% Post Consumer Recycled Polyester
Finish/Backing	None
Antimicrobial	No
Flame Retardants	No
Repeat - Horizontal/Vertical	None
Railroad	No
Width	66"
Colorfastness to Light AATCC 16-1	Class 4/60 hrs
Crocking AATCC 8	Grade 4.5 min. dry & Grade 4.5 min. wet
Breaking Strength ASTM D5034	217 lbs. Warp, 157 lbs. Fill
Seam Slippage	62 lbs. Warp, 51 lbs. Fill
ASTM E84	Pass
UFAC	Class 1
Cleaning Code	W-S
Bleach Disinfectable	No

Cleaning Code Definition

- W: Water-based foam or cleaner
- WS: Clean with water-based cleaning agents or foam



kimballinternaional.com
1600 Royal Street, Jasper, Indiana 47546
800.482.1717

Form no. KISCPAC23
Printed in USA
2023

Please reference price list for product applications. Product details and other data are subject to change without notice. We will always ship a satisfactory commercial color match. Due to industry standard dye lot variation, colors may not match exactly. Cut yardages and individual memo samples are available. Contact customer Service for pricing and availability.