



## Lehr

### Mixed material paradise.

This tiered table series showcases stunning materials. Its upper table features a walnut surface while the lower table highlights a brown ceramic top, all accented by a black metal frame. The round table version mixes a ceramic top surface and a brown glass lower shelf. Eclectic materials merge to create these functional statement pieces.

# Lehr



## Round Side Table

C04SDT0201

Height 21.65"  
Diameter 17.32"

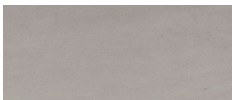


## Tiered Side Table

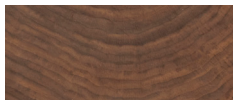
C04SDT0301

Height 24.01"  
Width 29.45"  
Depth 25"

## Materials



Brown Ceramic Top  
Brown Glass Shelf  
Black Metal Frame



Brown Ceramic and  
Walnut Shelf  
Black Metal Frame

## Specs

Round Side Table: High gloss brown ceramic top and brown glass shelf  
Tiered Side Table: Brown ceramic top and Walnut cross cut solid wood tiered shelf with irregular raw edge  
Black powdercoated steel base  
Black nylon glides

## Assembly

Some assembly required

## Shipping

Can be shipped small parcel FedEx Ground

## Warranty

Kimball Hospitality 2 years

**D'STYLE**<sup>®</sup>  
**ESSENTIALS**  
Kimball Hospitality

©2024 Kimball International, Inc.  
DSQuotes@dstyle.com | kimballhospitality.com  
KHDESLEH24