

# Lea

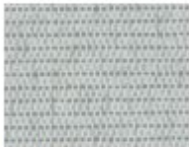
## Vertical Textile Collection – Grade AA



Terrain  
16601



Sand  
16602



Crystal  
16603



Mystic  
16604



Cliff  
16605



Valley  
16606



Hazelnut  
16607

# Lea

|                                      |  |
|--------------------------------------|--|
| Grade                                | AA   |
| Content                              | 92.42% Post-Consumer Recycled Polyester<br>7.58% Post-Industrial Polyester |
| Finish/Backing                       | Acrylic backing  |
| Antimicrobial                        | No   |
| Flame Retardants                     | No   |
| Repeat - Horizontal/Vertical         | 0.063 in. H / 0.063 in. V  |
| Railroad                             | No   |
| Width                                | 66"  |
| Weight                               | 9.728 oz linear yard   |
| Colorfastness to Light<br>AATCC 16-1 | Class 4/40 hrs   |
| Crocking<br>AATCC 8                  | Grade 4 min. dry &<br>Grade 3 min. wet                                     |
| Breaking Strength<br>ASTM D5034      | 231 lbs Warp, 77 lbs Fill  |
| California TB 117-2013               | Pass   |
| ASTM E84                             | Pass   |
| UFAC                                 | Class 1  |
| Cleaning Code                        | WS   |
| Bleach Disinfectable                 | Yes - 10% bleach/water solution  |

## Cleaning Code Definition

- W: Water-based foam or cleaner
- WS: Clean with water-based cleaning agents or foam



kimballinternational.com  
1600 Royal Street, Jasper, Indiana 47546  
800.482.1717

Form No. KISCPANLEA23  
Printed in USA  
2023

Please reference price list for product applications.  
Product details and other data are subject to change without notice.  
We will always ship a satisfactory commercial color match.  
Due to industry standard dye lot variation, colors may not match exactly.  
Cut yardage and individual memo samples are available.  
Contact Customer Service for pricing and availability.