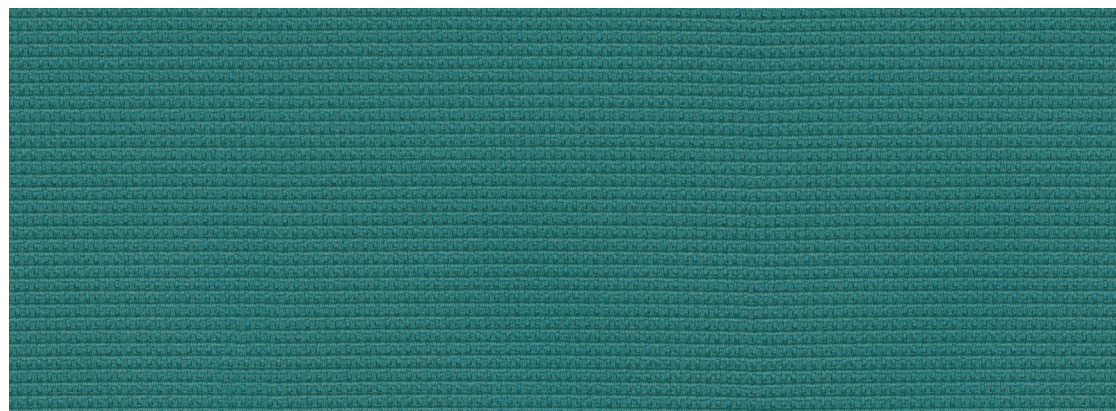
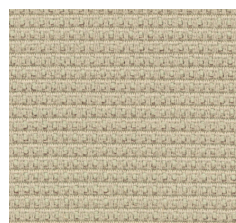


# Brilliant Grade 2

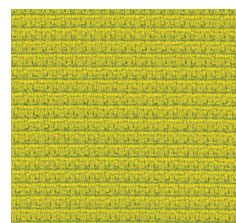
## Seating Textile Collection



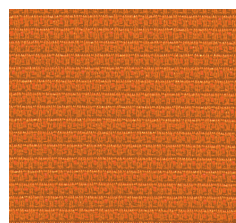
22514 Bluegrass



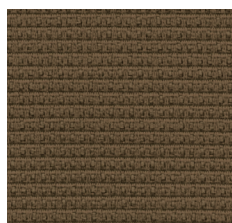
22513 Almond



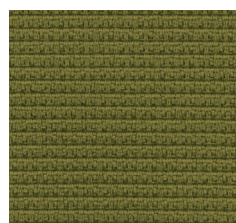
22502 Kiwi



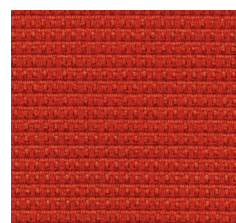
22503 Marigold



22506 Cattail



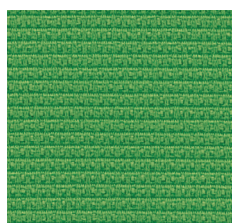
22511 Moss



22505 Amaryllis



22517 Coffee



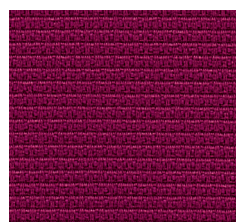
22501 Parrot



22516 Currant



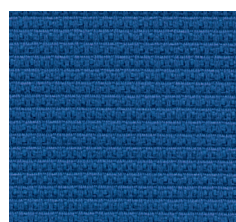
22507 Ebony



22504 Azalea



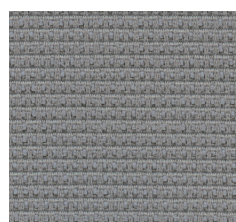
22512 Cinder



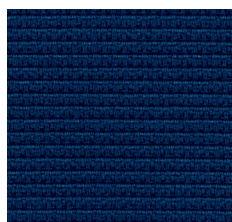
22515 Cobalt



22508 Elderberry



22509 Gravel



22510 Indigo

### Brilliant

Grade	2
Content	56% Polyester, 44% Post-Consumer Recycled Polyester
Finish/Backing	BLOCKaide®/Acrylic
Antimicrobial	No
Flame Retardants	No
Repeat - Horizontal/Vertical	None
Railroad	No
Width	54"
Abrasion	140,000 Double Rubs
Breaking Strength	295 lbs Warp, 330 lbs Fill
Colorfastness to Light	Class 4/40 hrs.
Crocking	Class 4 Dry, Class 3 Wet
Pilling	Class 4
Seam Slippage	110 lbs Warp, 85 lbs Fill
California TB 117-2013	Pass
UFAC	Class 1
Cleaning Code	WS
Bleach Disinfectable	No
Dye Transfer/ Reverse Crocking	Some upholsteries may experience dye transfer (clothing dyes transfer to the seating fabric). This does not mean that the fabric or application is deficient, but rather it is an inherent characteristic of that fabric or application and is considered normal behavior. Once the dye transfer occurs, it is irreversible.

We will always ship a satisfactory commercial color match. Due to industry standard dye lot variation, colors may not match exactly.