



31717 Platinum



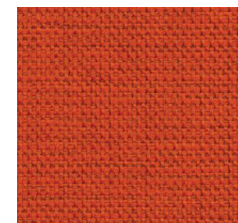
31715 Hickory



31713 Sand



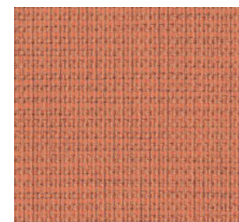
31711 Bisque



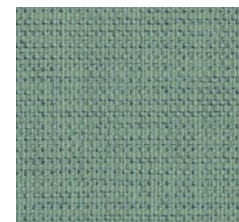
31720 Scarlet



31721 Sage



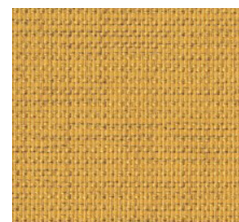
31714 Coral



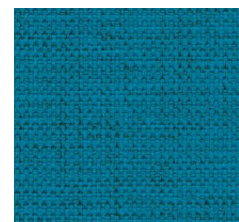
31723 Viridian



31719 Slate



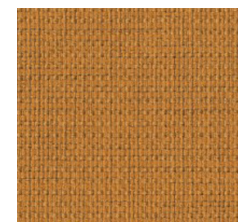
31716 Honey



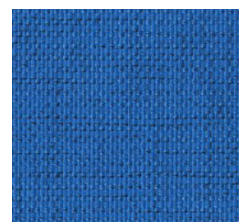
31722 Peacock



31712 Charcoal



31718 Ochre



31724 Admiral

Intuition

Grade	2
Content	55% Post-Consumer Recycled Polyester, 34% Pre-Consumer Recycled Polyester, 11% Polyester
Finish/Backing	Stain Repellant/Acrylic
Antimicrobial	No
Flame Retardants	No
Repeat - Horizontal/Vertical	None
Railroad	No
Width	54"
Abrasion	100,000 Double Rubs
Breaking Strength	210 lbs Warp, 200 lbs Fill
Colorfastness to Light	Class 4/40 hrs.
Crocking	Class 4 Dry, Class 3 Wet
Pilling	Class 4
Seam Slippage	30 lbs Warp, 45 lbs Fill
California TB 117-2013	Pass
Cleaning Code	WS
Dye Transfer/ Reverse Crocking	Some upholsteries may experience dye transfer (clothing dyes transfer to the seating fabric). This does not mean that the fabric or application is deficient, but rather it is an inherent characteristic of that fabric or application and is considered normal behavior. Once the dye transfer occurs, it is irreversible.

We will always ship a satisfactory commercial color match. Due to industry standard dye lot variation, colors may not match exactly.