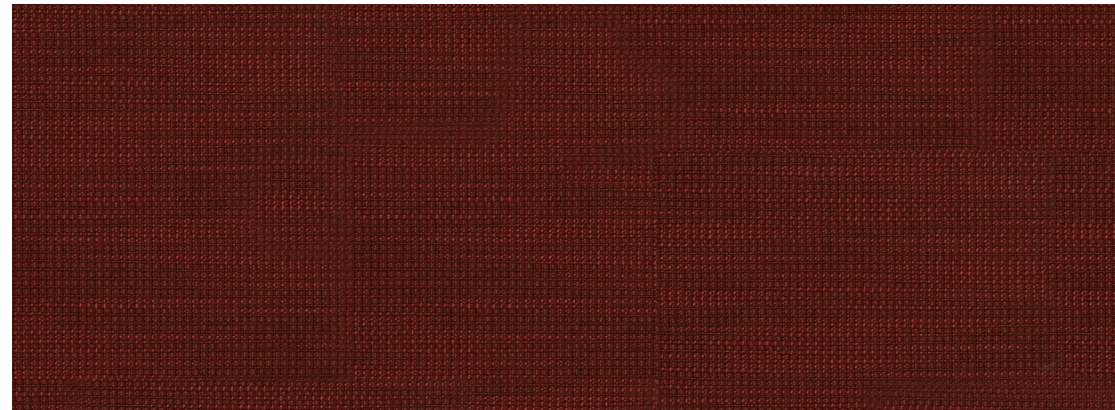
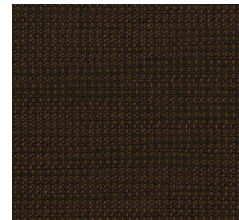


Ridge Grade 1

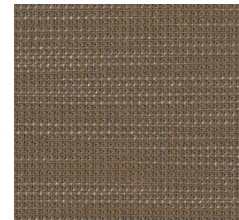
Seating Textile Collection



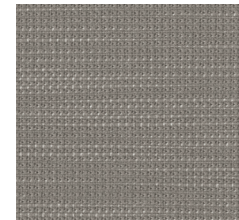
12005 Crimson



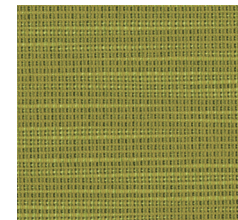
12006 Driftwood



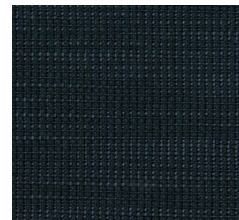
12012 Dune



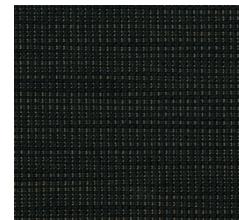
12004 Fog



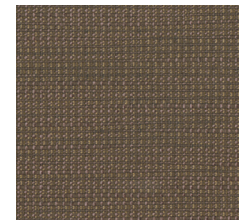
12001 Meadow



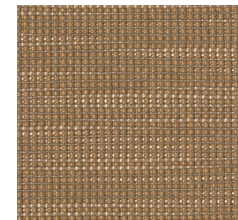
12010 Midnight



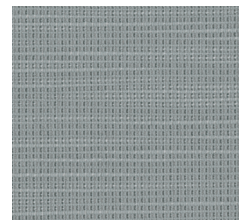
12007 Peak



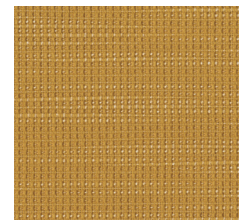
12008 Pebble



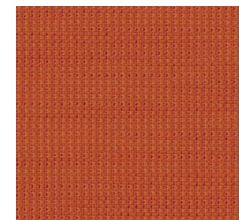
12011 Sand



12009 Sea Breeze



12002 Shine



12003 Sunset

Ridge

Grade	1
Content	100% Polyester
Finish/Backing	None/Latex
Antimicrobial	No
Flame Retardants	No
Repeat - Horizontal/Vertical	None
Railroad	No
Width	54"
Abrasion	100,000 Double Rubs
Breaking Strength	160 lbs Warp, 164 lbs Fill
Colorfastness to Light	Class 4/40 hrs.
Crocking	Grade 4 Min. Dry & Grade 3 Min. Wet
Pilling	Class 4
Seam Slippage	88 lbs Warp, 84 lbs Weft
California TB 117-2013	Pass
UFAC	Class 1
Cleaning Code	W
Bleach Disinfectable	No
Dye Transfer/ Reverse Crocking	Some upholsteries may experience dye transfer (clothing dyes transfer to the seating fabric). This does not mean that the fabric or application is deficient, but rather it is an inherent characteristic of that fabric or application and is considered normal behavior. Once the dye transfer occurs, it is irreversible.

We will always ship a satisfactory commercial color match. Due to industry standard dye lot variation, colors may not match exactly.