

# MHO<sup>®</sup>-B Pivoting Power Grommet G12B

POWER+DATA SOLUTIONS

## FEATURES

- One touch door remains open during use
- Includes (2) USB A+C combo ports and (2) power outlets
- Voice/data adapter kit included
- Accommodates table thickness ¾" - 1¾"

## SPECIFICATIONS

- White, silver, and black powder coat
- (2) USB-A+C combo ports, 18w, 2 amp
- (2) power outlets; 15 amp, 120v
- 6' power cord with 3-prong molded plug; 15 amp
- 6' metal conduit pigtail in-feed cable; 15 amp, 120v (hardwire models)
- UL<sup>®</sup> listed

## MODEL #

NACG12BELPW	4½"D 9¾"W 2"H	PLUG	WHITE
NACG12BELPS	4½"D 9¾"W 2"H	PLUG	SILVER
NACG12BELPB	4½"D 9¾"W 2"H	PLUG	BLACK
NACG12BELHCW	4½"D 9¾"W 2"H	HARDWIRE	WHITE
NACG12BELHCS	4½"D 9¾"W 2"H	HARDWIRE	SILVER
NACG12BELHCB	4½"D 9¾"W 2"H	HARDWIRE	BLACK



NATIONAL<sup>®</sup>

800.482.1717

[kimballinternational.com](http://kimballinternational.com)

©2024 Kimball International, Inc.

All rights reserved.

NISELMHO24

# MHO<sup>®</sup>-B Pivoting Power Grommet G12C

POWER+DATA SOLUTIONS

## FEATURES

- One touch door remains open during use
- Includes (4) power outlets
- Voice/data adapter kit included
- Accommodates table thickness ¾" - 1¾"

## SPECIFICATIONS

- White, silver, and black powder coat
- (4) power outlets; 15 amp, 120v
- 6' power cord with 3-prong molded plug and built-in circuit breaker; 15 amp (plug models)
- 6' metal conduit pigtail in-feed cable; 15 amp, 120v (hardwire models)
- UL<sup>®</sup> listed

## MODEL #

NACG12CELPGW	4½"D 9¾"W 2"H	PLUG	WHITE
NACG12CELPGS	4½"D 9¾"W 2"H	PLUG	SILVER
NACG12CELPGB	4½"D 9¾"W 2"H	PLUG	BLACK
NACG12CELHCW	4½"D 9¾"W 2"H	HARDWIRE	WHITE
NACG12CELHCS	4½"D 9¾"W 2"H	HARDWIRE	SILVER
NACG12CELHCB	4½"D 9¾"W 2"H	HARDWIRE	BLACK



NATIONAL<sup>®</sup>

800.482.1717

[kimballinternational.com](http://kimballinternational.com)

©2024 Kimball International, Inc.

All rights reserved.

NISELMO24

# Voice+Data Adaptor Kit

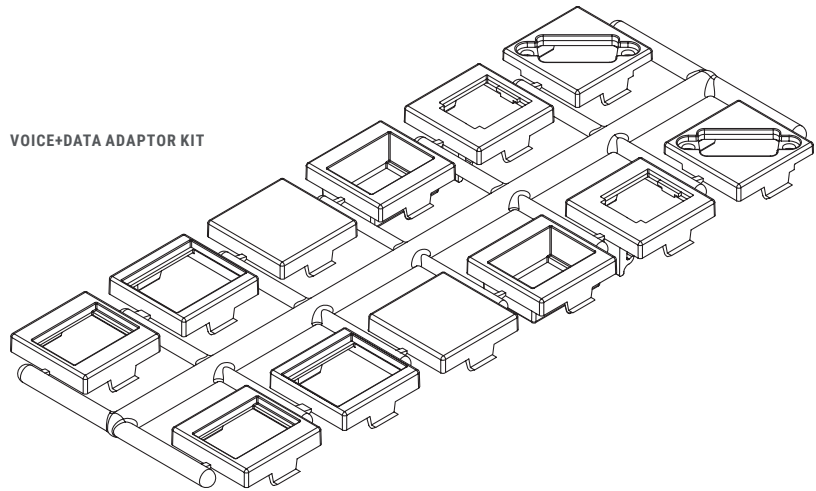
POWER+DATA SOLUTIONS

## FEATURES

- Provides adapters for a variety of manufacturer's jacks and couplers
- Allows jacks and couplers to be used in power/data centers
- Choose appropriate adapter from chart below, install jack or coupler, and snap into place in kit's modular windows
- Kit included with all power+data centers that require adaptors

## SPECIFICATIONS

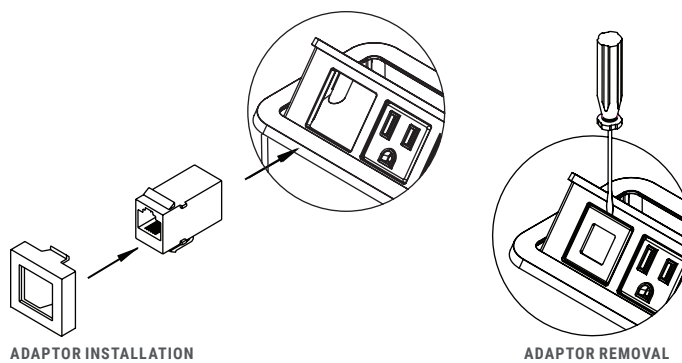
- 8 adaptors available (14 total)
- Select the appropriate BE01421 adaptor from chart below
- Jacks not included



ADAPTOR	MANUFACTURER
BBB	SIEMON ZMAX STYLE HDMI ADAPTER CABLE
CCC	HUBBELL NEXTSPEED™ KEYSTONE SERIES ADC TRUENET SERIES
DDD	BLANK (NO COUPLER/JACK)
EEE	ORTONICS TRACJACK SERIES
FFF	PANDUIT MINI-COM SERIES
HHH	VIDEO MONITOR JACK/DB-15, PANEL MOUNT SOLDER STYLE

## INSTALLATION

- Snap jack into adaptor following the instructions provided with the jack
- Once assembled, snap adaptor into the notched, square holes in the orientation shown
- Adapter can be removed by small flat head screwdriver
- Note: Please verify fit of jack in adaptor before ordering large quantities as manufacturer designs may change without notice



NATIONAL

800.482.1717  
kimballinternational.com  
©2024 Kimball International, Inc.  
All rights reserved.

NISELMHO24