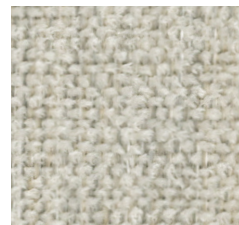


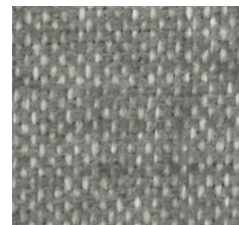
15618 Blush



15605 Pearl



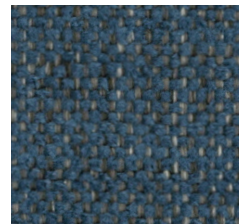
15604 Mineral



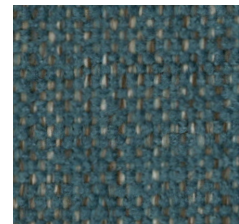
15601 Steel



15603 Pewter



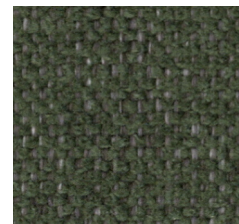
15611 Lagoon



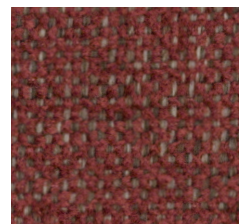
15610 Aegean



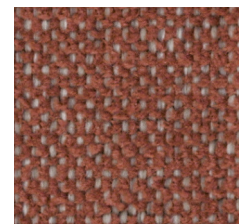
15612 Moss



15613 Lawn



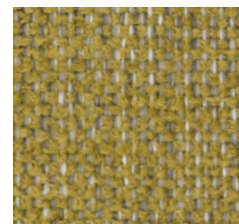
15615 Pomegranate



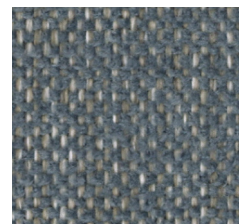
15616 Adobe



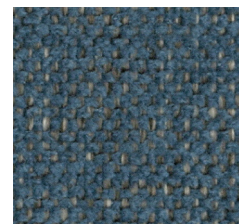
15602 Flax



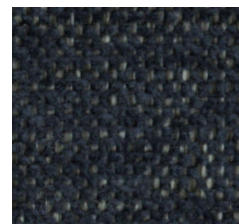
15614 Nile



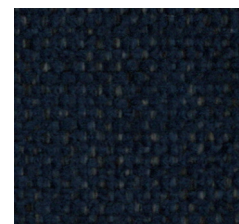
15606 Harbour



15609 Ocean



15607 Navy



15608 Deepness



15617 Charcoal

Page

Grade	1
Content	52.99% UV Polyester, 47.01% Polyolefin
Finish/Backing	Acrylic backing
Antimicrobial	No
Flame Retardants	No
Repeat - Horizontal/Vertical	.063 in.H/.063 in.V
Railroad	Non-directional
Width	57.5"
Weight	23.616 oz linear yard
Abrasion	63,000 (cotton duck)
Breaking Strength	256 lbs Warp, 80 lbs Fill
Colorfastness to Light	Class 4/40 hrs
Crocking	Grade 4 min. Dry, Grade 3 min. wet
California TB 117-2013	Pass
ASTM E84	Pass
UFAC	Class 1
Cleaning Code	WS
Bleach Disinfectable	10% bleach/water solution

Cleaning Code Definition

- W: Water-based foam or cleaner
- WS: Clean with water-based cleaning agents or foam

We will always ship a satisfactory commercial color match. Due to industry standard dye lot variation, colors may not match exactly.