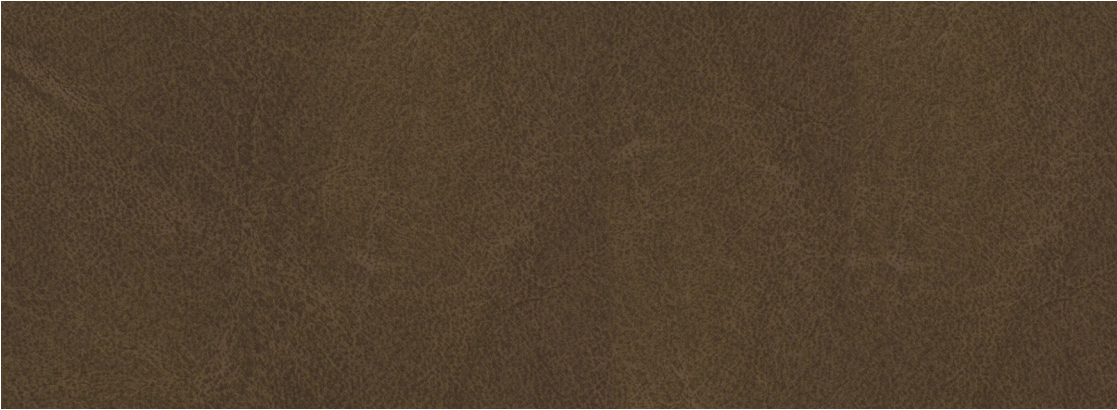


Florence

Grade L8

Seating Textile Collection



Basilica (82014)



Almond Biscotti (82002)



Duomo (82011)



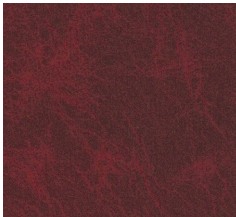
Terra (82006)



Lorenzo (82013)



Brick Path (82003)



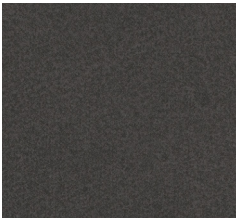
Red Lily (82001)



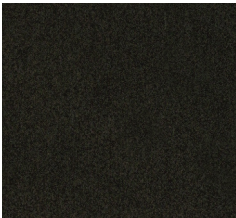
Vino Rosso (82007)



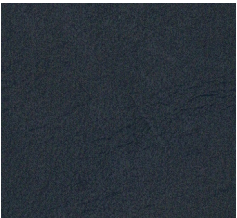
Scorza (82012)



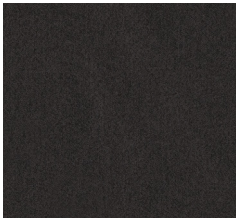
Loggia (82015)



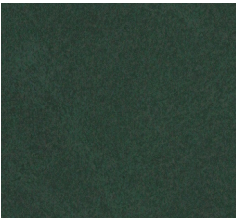
Struzzo (82009)



Mezza Luna (82008)



Espresso (82010)



Oceano (82004)



Boboli Gardens (82005)

Florence

Grade	L8
Content	Top Grain, Aniline drum dyed
Finish/Backing	Aniline, Protected by Crypton®/No Backing
Antibacterial	Yes
Flame Retardants	No
Width	48-52 sq ft
AATCC 4352 and AATCC 6538	Pass
Abrasion Tabor Test ASTM D7255	500 cycles/500 gram weight
Colorfastness to Light ISO 105-B02	Class 3/65 Hours
Crocking	Class 4 - Wet Class 4 - Dry
California TB 117-2013	Pass
Bleach Disinfectable	5% Bleach/Water solution
Crypton & Cleaning	<p>Stains which can be easily removed include wine, coffee, sunscreen, hair gel, hair mousse, vinegar, blood, urine and most other stains from food and typical soiling. Should a spill occur, blot (pressing gently without rubbing) immediately using clean, dry sections of an absorbent cloth or paper towels. Should soiling remain or for a more thorough cleaning, a solution of lukewarm water and a mild cleaner, such as Ivory® soap or Woolite®, may be used. Dampen a clean white cloth and gently wipe the affected area using a circular motion. Rinse completely with clean sections of cloth which is damp with plain water until all cleaner is removed. Blot dry with paper towels or dry cloth and allow to completely air dry. Repeat the cleaning process as needed, allowing the leather to dry between applications. If necessary, the leather can be cleaned with cleaners containing up to a 5% bleach solution (Sodium Hypochlorite). However, most stains can be easily removed using just gentle soap and water or the readily available commercial and household cleaning products.</p> <p>Note: Leathers protected by Crypton are more resistant to denim dye transfer due to the stain resistance properties. However, if moisture, pressure and a highly abrasive situation occur, some denim will transfer, particularly with white and lighter leathers.</p>

We will always ship a satisfactory commercial color match. Due to industry standard dye lot variation, colors may not match exactly. Cut yardage and individual memo samples are available. Contact National Customer Service for pricing and availability.