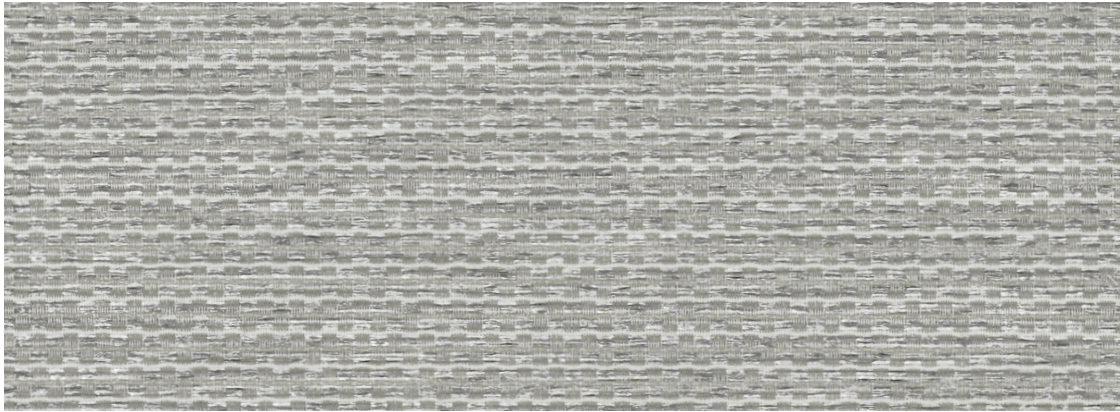
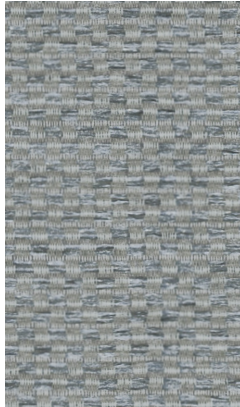


Stamp Grade A

Vertical Textile Collection



16001 Pearl



16000 Echo



16005 Storm



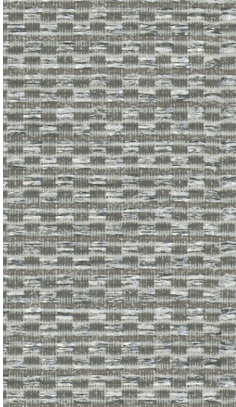
16003 Jade



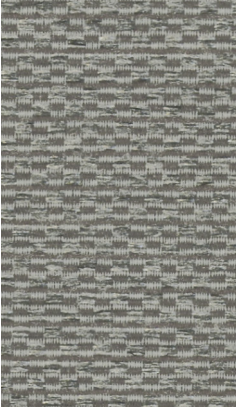
16004 Pistachio



16006 Sunrise



16002 Misty



16007 Smokey



16008 Pepper

Stamp

Grade	A
Content	58.6% Post-Consumer Recycled Polyester, 35.7% Post-Industrial Polyester, 5.7% Post-Industrial Polyester
Finish/Backing	Acrylic
Antimicrobial	None
Flame Retardants	None
Repeat - Horizontal/Vertical	0.063 In./Horizontal 0.063 in./Vertical
Railroad	No
Width	66"
Breaking Strength	433 lbs Warp, 342 lbs Fill (ASTM D5034)
Colorfastness to Light	Class 4/40 hrs (AATCC 16.3)
Crocking	Class 3 Wet, Class 4 Dry (AATCC 8)
ASTM E84	Pass
Cleaning Code	WS
Bleach Disinfectable	Yes, 1:10 Bleach/water solution

Cleaning Code Definition
• WS: Clean with water-based cleaning agents or foam

We will always ship a satisfactory commercial color match. Due to industry standard dye lot variation, colors may not match exactly.