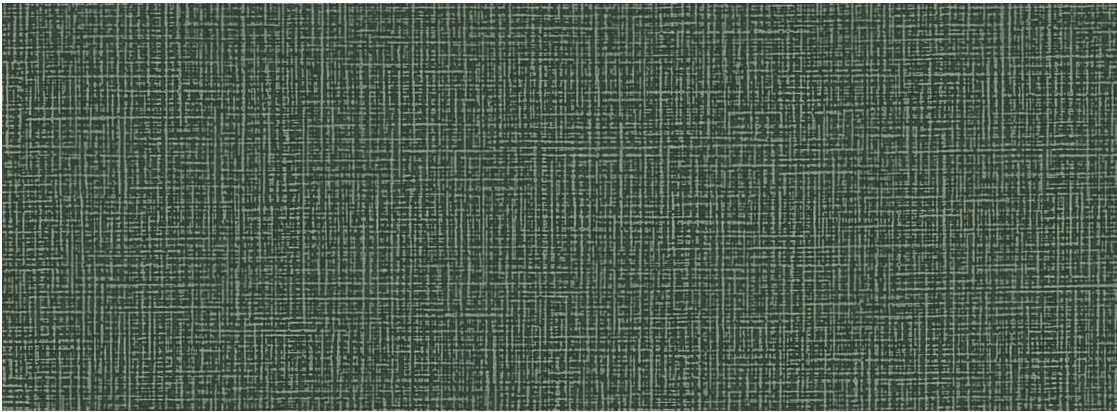


Masiala Grade 2

Seating Textile Collection



22019 Woodlet



22008 Eggshell



22013 Quiet



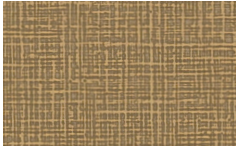
22005 Calm



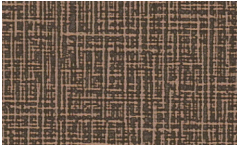
22004 Cabin



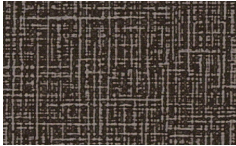
22021 Ballet



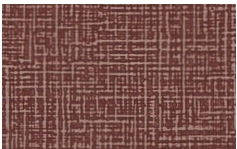
22022 Beachgrass



22014 Root



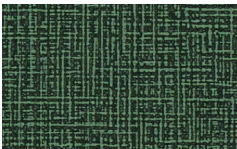
22001 Black Walnut



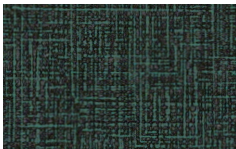
22002 Blossom



22023 Berry Bush



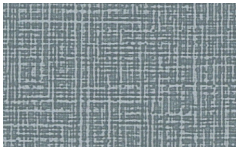
22018 Verdent



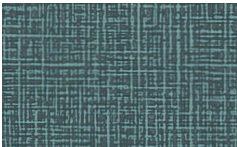
22011 Malachite



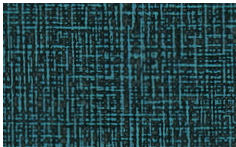
22016 Sea Mist



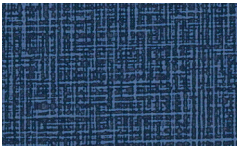
22009 Froth



22017 Underwater



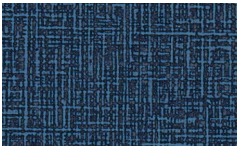
22020 Emerge



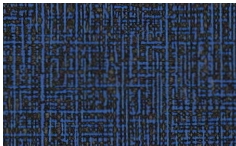
22015 Sapphire



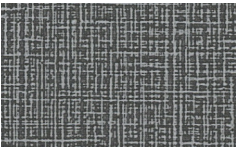
22003 Bluestar



22007 Denim



22010 Inkpad



22006 Damascus



22012 Noire

Masiala

Grade	2
Content	100% Vinyl
Finish/Backing	Permablok® / 100% Post-Recycled Polyester
Antimicrobial	No
Flame Retardants	No
Repeat - Horizontal/Vertical	18 in./Horizontal 18 in./Vertical
Railroad	No
Width	54"
Abrasion ASTM D4157 Wyzenbeek	100,000 Double Rubs, Wyzenbeek (ASTM D4157)
Breaking Strength	ASTM D751 Warp 67 Fill 159
Colorfastness to Light	Class 4/40 hrs
Crocking CFFA 7	Wet 4; Dry 4
California TB 117-2013	Pass
UFAC	Class 1
Cleaning Code	WS
Bleach Disinfectable	Yes, 1:9 bleach/water solution
Dye Transfer/ Reverse Crocking	Some upholsteries may experience dye transfer (clothing dyes transfer to the seating fabric). This does not mean that the fabric of application is deficient, but rather it is an inherent characteristic of that fabric or application and is considered normal behavior. Denim Stain Resistance; Not Denim Dye cleanable; Ink Resistant

Please reference price list for product applications. Product details and other data are subject to change without notice. We will always ship a satisfactory commercial color match. Due to industry standard dye lot variation, colors may not match exactly. Cut yardage and individual memo samples are available. Contact Customer Service for pricing and availability.

Cleaning Code Definition
• WS: Clean with water-based cleaning agents or foam