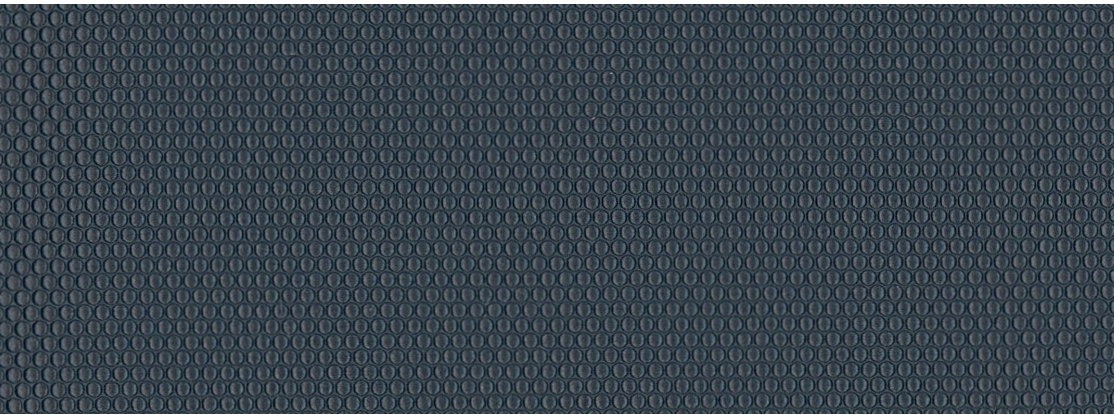


Pixie Grade 2

Seating Textiles



20210 Blueberry



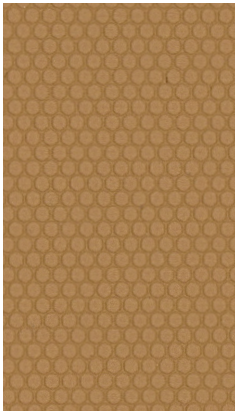
20209 Blue Raspberry



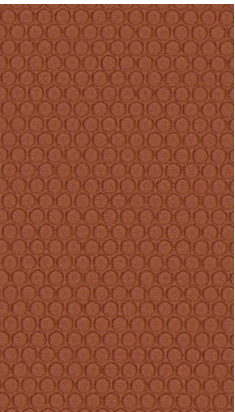
20201 Lime



20204 Caramel



20202 Honey



20203 Orange



20205 Cinnamon



20206 Chocolate



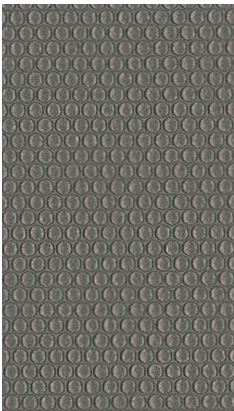
20213 Root Beer



20208 Vanilla



20211 Malt



20212 Licorice



20207 Blackberry

Pixie

Grade	2
Content	100% Polyurethane
Finish/Backing	i-Clean 85% Polyester 15% Cotton
Antimicrobial	Yes
Phthalates	No
Flame Retardants	No
Repeat - Horizontal/Vertical	None
Railroad	No
Width	54"
Abrasion ASTM D4157 Wyzenbeek	Heavy-Duty Exceeds 200,000 Double Rubs (Wire Screen)
Colorfastness to Light AATCC16A	Class 4/200 hrs. min.
Colorfastness ASTM D3597, AATCC8	Class 4 Wet Class 4 Dry
Seam Strength ASTM D4034	36 lbs. Warp 61 lbs. Weft
Hydrolysis Resistance	50,000 Cycles
California TB 117-2013	Pass
Cleaning Code	W

Cleaning Code Definition  
• W: Water-based cleaners may be used

We will always ship a satisfactory commercial color match. Due to industry standard dye lot variation, colors may not match exactly.