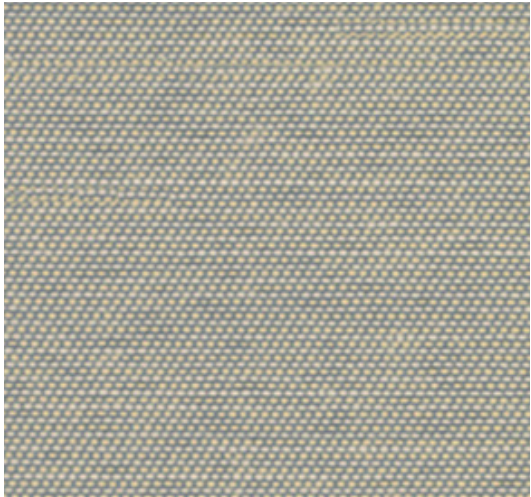




25309 Tweed



25308 Angora



25302 Egyptian



25306 Twill

Savile

Grade	B
Content	75% Post Consumer Recycled Polyester, 25% Pre Consumer Recycled Poyester
Finish, Backing	None
Antimicrobial	No
Flame Retardants	None
Repeat	0.063" H, 0.063" V
Railroad	No
Width	66"
Breaking Strength	213 lbs. Warp, 147 lbs. Fill
Colorfastness to Light	Class 4/40 Hours
Crocking	Class 4 Dry, Class 3 Wet
California TB 117-2013	Pass
ASTEM 84	Pass
Cleaning Code	WS
Bleach Disinfectable	Yes, 1 Bleach; 10 Water

**Cleaning Code Definition**  
• WS: Use water-based cleaning agents or foam. Mild water-free solvents may also be used. Cleaning by a professional furniture service is recommended.

We will always ship a satisfactory commercial color match. Due to industry standard dye lot variation, colors may not match exactly.