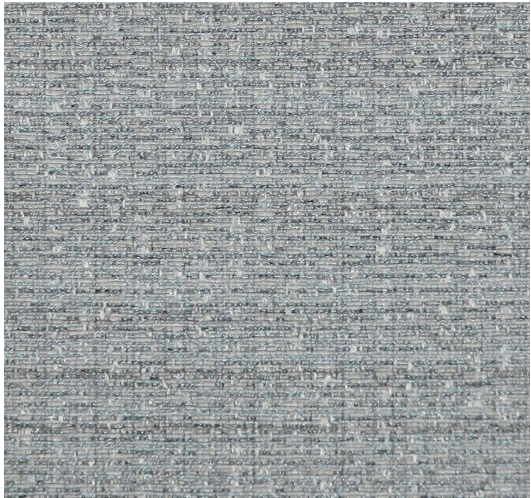


10520 Limestone



10522 Glacier



10528 Slate

Prose

Grade	B
Content	68.48% Post Consumer Recycled Polyester, 31.52% Polyester
Finish, Backing	None, Acrylic
Antimicrobial	No
Flame Retardants	None
Repeat	.063"H, .063"V
Railroad	No
Width	66"
Breaking Strength	208 lbs. Warp, 183 lbs. Fill
Colorfastness to Light	Class 4/40 Hours
Crocking	Class 4 Dry, Class 3 Wet
Pilling	Class 4
Seam Slippage	77 lbs. Warp, 83 lbs. Fill
California TB 117-2013	Pass
ASTM E84	Pass
Cleaning Code	WS

**Cleaning Code Definition**  
• WS: Use water-based cleaning agents or foam. Mild water-free solvents may also be used. Cleaning by a professional furniture service is recommended.

We will always ship a satisfactory commercial color match. Due to industry standard dye lot variation, colors may not match exactly.