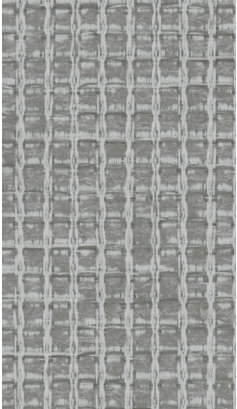
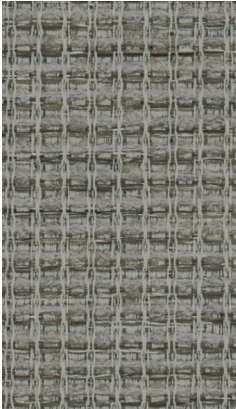


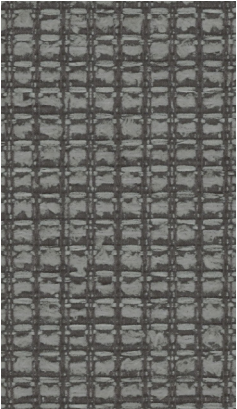
10635 Iron



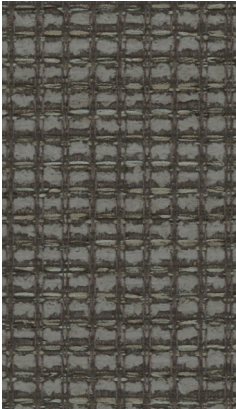
10633 Pewter



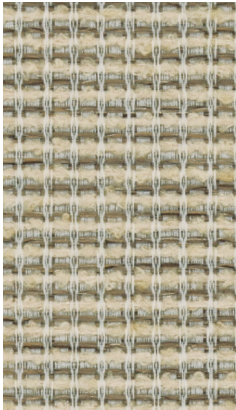
10636 Tin



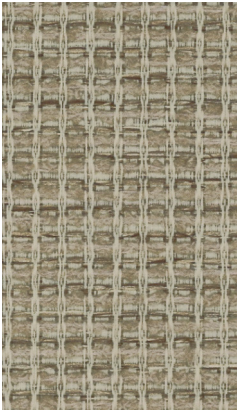
10637 Cliff



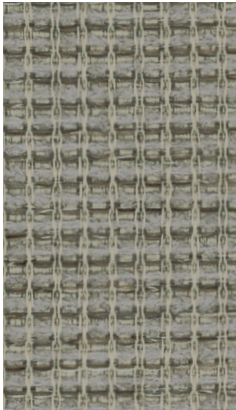
10638 Coal



10630 Sandbar



10631 Cobblestone



10634 Fleck

Lyko

Grade	B
Content	83.59% Post-Consumer Recycled Polyester, 16.41% Post-Industrial Recycled Polyester
Finish, Backing	None, Acrylic
Antimicrobial	No
Flame Retardants	None
Repeat	.125" H, .125" V
Railroad	No
Width	66"
Breaking Strength	207 lbs. Warp, 179 lbs. Fill
Colorfastness to Light	Class 4/40 Hours
Crocking	Class 3 Wet, Class 4 Dry
California TB 117-2013	Pass
ASTM E84	Pass
Cleaning Code	WS
Bleach Disinfectable	No

Cleaning Code Definition
• WS: Clean with water-based cleaning agents or foam

We will always ship a satisfactory commercial color match. Due to industry standard dye lot variation, colors may not match exactly.