

Crossroads

Grade A

Vertical Textile



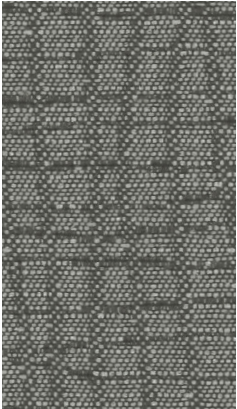
10306 Spa



10302 Mercury



10305 Silvatica



10303 Pewter



10307 Storm



10301 Champagne

Crossroads

Grade	A
Content	87.07% Post-Consumer Recycled Polyester, 12.93% Post-Industrial Recycled Polyester
Finish, Backing	None, Acrylic
Antimicrobial	No
Flame Retardants	None
Repeat	7.5" H, 14.285" V
Railroad	No
Width	66"
Breaking Strength	198 lbs. Warp, 115 lbs. Fill
Colorfastness to Light	Class 4/40 Hours
Crocking	Class 3 Wet, Class 4 Dry
California TB 117-2013	Pass
ASTM E84	Pass
Cleaning Code	WS
Bleach Disinfectable	Yes, 1 Bleach: 10 Water

Cleaning Code Definition
• WS: Clean with water-based cleaning agents or foam

We will always ship a satisfactory commercial color match. Due to industry standard dye lot variation, colors may not match exactly.