

CONEJO VALLEY WOODWORKER'S ASSOCIATION

The Bladerunner

June, 2000 Number 52

JUNE MEETING

June 1 – Safety Issues and Ideas – Club Participation

Most members think of safety as one of the key issues in woodworking. Norm Abrams always starts each *New Yankee Workshop* show by reminding people to read and follow directions for operating power tools and to wear safety glasses. At this meeting we encourage members to show or describe their own special safety techniques from a positive point of view: “preventative” rather than “look what happened to me.” If you have any safety devices, jigs, techniques, special commercial or home made safety gear, or anything else that you would like to share to keep our members healthy, bring it to the meeting.

SATURDAY SHOP SESSION

No Saturday Shop Session is Planned for June

July Meetings

Thursday, July 6 – Vacuum Veneering – Stephen Case-Pall and Ira Goldberg

Stephen and Ira are in the process of assembling a vacuum veneering system from parts rather than purchasing an integrated system. At this meeting they will demonstrate how it works or why it didn't.

Saturday, July 8 – To be determined

MAY MEETING PRIZES

Bernie Huberman	- 3' bar clamps
John Witt	- Delta Sander
Stephen Case-Pall	- Marking Rule
Mike Sondreaal	- 6" Combination Square
Ira Goldberg	- Marking Gage
Rosemary Williams	- Amer. Woodworker Cap
Bob Holmquist	- Amer. Woodworker Cap

We hope that you enjoy the prizes.

THANK YOU AGAIN, JUNIORS' TOOLS

The CVWA thanks Junior's for “helping out” by donating door prizes. Please remember, when you purchase a tool at Junior's let the sales person know that you are a member of CVWA. Not only will you receive a discount, Junior's will also give the club credit toward future prizes or items.

CVWA FOOTSTOOLS SOLVE A PROBLEM

Several members made 14 footstools for Children with Downs Syndrome. When many of these children sit at their desks in school their feet don't reach the floor and they are very uncomfortable. As a result they have greater difficulty concentrating on their work. Mike DeCaprio made plans for a small footstool that fit under their desks. These were very successful. Last month each of these children, who can barely write, sent letters to thank the Club. Mike said that since teachers are learning about these footstools, more are needed. Contact Mike at 805-388-0983 if you are interested in participating.

MAY MEETING NOTES

Most of us think of redwood as a construction grade lumber. When we consider of scrap redwood, we think of it as nearly useless. Most of us don't realize that redwood, with all of its difficulties for woodworking, is intrinsically beautiful. Eileen and Greg realized that the scrap redwood from an old patio, a building overhang, and scrap piles could be converted to unique furniture.

The challenge was to make nice-looking furniture from mostly 2-by-6 dimensioned redwood. Without previous woodworking experience Greg and Eileen

WELCOME NEW MEMBERS AND GUESTS

We were happy to welcome new members Dan Gallo, Shaun Millington, and Loren Stone, and guests Chuck Diedrich, Bill Fessler, and Bill Gourlay. We hope that you enjoyed the meetings and we look forward to seeing you at future meetings and club activities.

PLEASE RETURN YOUR LIBRARY BOOKS

Jack Luhrsen, our librarian, requests that all members look through their homes for CVWA books and videos that are outstanding. They need to be inventoried

began to make furniture. Eileen took charge of finishing, and Greg took charge of construction. When they encountered problems, they addressed the challenge in creative ways.

Eileen and Greg brought an end table to illustrate the process. The table was made of resawn redwood. Each of the legs ran the height of the table to support the top. The legs were cut out of 2-by-6's and mounted so that they made a 45-degree angle to the sides of the case. Each side of the case was connected to either side of a leg. Painted redwood was cleaned with a torch.

To make cases for tables they designed a practical clamping jig. Three blocks of 2x4 lumber were mounted upright on a plywood board so that the case could fit loosely between the boards. The three verticals were secured with triangular pieces. The frame of the table was inserted between the three fixed boards. A fourth board that was further out from the case held a screw that pushed another board tight against the case. (Figure 1) As the screw was tightened across one dimension, shims were added to tighten the case in the perpendicular direction. As the case is being tightened it was tapped with a rubber mallet so it lied flat on the base.

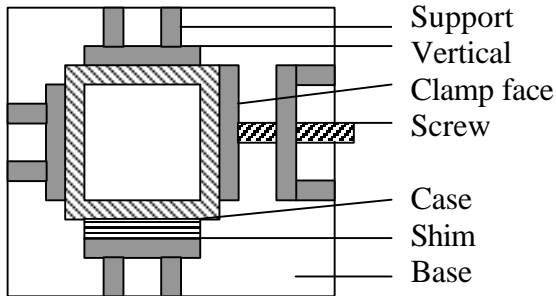


Figure 1: Clamping jig for redwood table The legs, positioned at each corner of the case and at 45 degrees to the sides is not shown

Drawers were made with a similar jig, except that shims were used on two sides. Strips about 1/4" thick and 1 1/2" wide cut from the 2x6's were used as the floor of the drawer. Another piece of redwood was cut for the face of the drawer. Two drawer glides were put on the bottom of the case so the drawer could slide, and one piece was put above the drawer so it would not tip forward.

Tabletops were edged-glued boards. The boards were clamped. Waxed paper was used so that the drawers didn't stick to the board on which they were resting.

Boards were sanded before assembly and after assembly to remove glue and damage caused by the

assembly process. A number of different types of finishes and finishing methods were tried before they settled on this: Either colored or clear water-based stain was used. It was applied with a cloth. Sometimes colors were mixed by applying one over the other with a sponge. This is sometimes called scrumbling and gives a variegated effect. Final finishing was done with three coats of clear Deft lacquer, applied with a brush.

The final step was to secure a hand-made ceramic knob that Eileen made to the drawer.

When you look at one of the tables you would never realize the wood source. This proves that you don't need exotic woods to get a satisfying product.

COMING EVENTS

Chris Stock, Woodturner in Glendale June 19

Chris Stock, a well known woodturner, will be giving classes and demonstrations at the Glendale Woodturners Club. If you would like more information contact John Tarpley at 805-499-2953

The Design in Wood Show June 15 - July 4:

The annual Design in Wood Competition and Exhibit will be held at the San Diego County Fair in Del Mar. The San Diego Fine Woodworkers Association sponsors the show. Contact Bob Stevenson at scww@compuserve.com or 619-422-7338. [The show is well worth the trip – Ed.]

Ventura County Fair August 2-13: Competition entries collected at the Fairgrounds Fri-Sun July 21-23, 10 AM to 7 PM.

The CVWA and the County Fair Creative Living Department encourages all county woodworkers to display examples of their work at the fair Exhibitors must be amateurs and residents of Ventura County. Amateur is defined as a person who engages in an activity as a pastime rather than a profession.

Classes of woodworking entries are:

- | | |
|-----------------------------------|--------------------|
| Fair Theme, "Visions of Tomorrow" | |
| House and garden accessories | |
| Farm animals cutout | Fret work |
| Furniture | Intarsia |
| Marquetry/Inlay | Musical Instrument |
| Toys (play on) | Toys (play with) |
| Wood turning | All other |

All entries are secured during the Fair. Entries must be picked up Monday, Aug. 14, between 10 AM and 7 PM

If you would like more information or would like to enter a project but cannot take it to the

Fairgrounds contact Gene West, 805-483-1210. Gene can enter the item on your behalf since he is involved in setting up the exhibits.

INTERNET WOODWORKING

There is a vast amount of information for woodworkers on Internet. For example, you can receive a free woodworking tip every day via e-mail from Shopsmith. Some tips are more useful than others depending on the kind of woodworking you do. Subscribe at: woodtip@ssimail.shopsmith.com

Here are a few examples that I thought useful:

Safety

April 27, 2000 : "Getting a grip" on your workpieces

Having a solid grip on your stock as you move it through sawblades and other operations is a "must" for preventing injury. Whenever possible, use push blocks or push sticks to keep your hands out of harm's way. When this isn't possible and you must use your fingers to control your stock, begin by first wiping as much sawdust as possible off all project surfaces with a damp cloth or tack cloth. Then, lick the tips of your fingers to improve your grip before grasping the workpiece.

May 8, 2000: Eliminating the "Sawdust Cling" on plastic goggles or face shields

Before starting work, wipe your lenses or shield gently (be careful not to scratch them) with a "cling-free" or similar clothes dryer anti-static sheet -- or a photographic anti-static sheet from a local photo supply store.

Sharpening:

May 3, 2000: Make-it-yourself Round Slipstone

A piece of 600-grit silicon carbide, wet-dry sandpaper wrapped (or glued) around an ordinary wooden dowel makes an excellent slipstone for sharpening curved-edge tools.

May 10, 2000: Getting a grip on flat plane irons during sharpening

Flattening the backsides of plane irons or jointer/planer blades can be difficult since they're seldom thick enough for you to get a good grip on them during sharpening. Try using a discarded speaker magnet (or "rare Earth" magnet from an old computer hard drive). Either should give you enough of a grip to move the blade back and forth while flattening their backsides

Gluing, Assembly, Fastening

May 9, 2000: Protecting workpiece surfaces when sawing-off protruding dowels

Use a small sheet of thin cardboard or sheet metal to make a protective cover by drilling a series of holes in it that are slightly larger than the most common sized dowel pins. Then, just drop the cover over your protruding dowel pins and use a small handsaw or veneer saw to trim off the dowel. Sand the remainder flush when finished.

Scroll Saw & Jig Saw

May 16, 2000: Improving the cutting efficiency of sabre saw blades

Since most sabre saw blades are merely stamped out of flat metal stock and not sharpened, their splinter-free cutting properties can usually be improved dramatically by taking a few brief minutes to sharpen their teeth with a small file prior to use.

ELECTRIC MOTORS, PART II WHAT ELSE IS IN A LABEL

Part I, in the February Bladerunner explained some of the mechanical and basic electrical information that is stamped on the nameplate of AC electric motors. This is clearly the most important consideration, but other factors are important, too. This month we will finish the discussion. If you need a copy of Part I, please let the editor know, and we will mail or e-mail a copy to you.

More Electrical and Mechanical Information:

Code: Have you ever noticed that sometimes when several tools or appliances are running on a circuit and you start a motor, the circuit breaker will open? This is because for a motor to start it needs higher current than when it is running. This starting current is called the inrush current. The *code* is a letter between A and V that designates the inrush current when the rotor is locked. The designation is 1000 x volts x amperes per horsepower. For example, my Craftsman table saw has a 1½ HP motor that operates at 120 V and 13 A at full load. Its code is H. That means the inrush "power" is between 6.3 and 7.09 kW per HP. If we multiply these numbers by the horsepower (1.5) and divided by the voltage (120), we find that the inrush current can be between 78 and 89 Amperes. No wonder the fuse can blow! Fortunately this high current only persists for a very short time.

If you are using a large motor on a household circuit and have a choice, select the one with the smaller code. It may accelerate more slowly, but it

will have fewer tendencies to interrupt the circuit. Another “thing” – don’t start a large motor under load. When starting a table saw, let it get to speed before you start cutting wood.

Design: The design is a letter A, B, C, or D that represents the motor output torque against the speed and current characteristics of the motor.. Type B, which is typical has the flattest torque vs. speed characteristic.

Service Factor (SF): Some motors can be run at higher than rated horsepower. Closed motors typically have a service factor of 1. In this case the value may not be shown. Open motors typically have a service factor of 1.15. Although the motor might be able to be used at higher than rated power it will run hotter and not last as long as it would if it were used at its rated conditions.

Safety and Reliability:

Duty or Time: The “duty”, “time”, or “operation” is the amount of time a motor can be run under at its rated condition. Typical motors are made for continuous (“cont”) operation. Rarely will other motors be found in woodworking equipment.

Insulation: Motors get hot when they run. The electric current in the wire and the type of the steel in the rotor and stator determine the efficiency. In turn, the difference between the total power used by the motor and the mechanical output is all converted to heat. The wire insulation is graded by letter to indicate the 20,000 hour life of a motor, Insulation will degrade rapidly above its rated temperature. Designations are A, 105°C; B, 130°C; F, 155°C; H, 180°C.

Maximum Ambient Temperature: This value and the insulation are closely tied. This value is the maximum temperature of the environment around the motor so that it can operate at its rated power.

Construction:

Enclosure (ENCL): The enclosure describes the type of motor and where it can be used. Several types are listed below:

Open Drip Proof (ODP) – This type of enclosure allows a free exchange of air with the outside to cool the windings, but is not affected by liquid drops that strike a horizontal motor when the drops fall at a 15-degree angle on either side of the vertical.

Totally Enclosed Fan Cooled (TEFC) – This type of motor prevents free exchange of air from the outside but has a fan that blows air over the outside surface

for cooling. It is not air- or water-tight, but much more resistant to air or moisture entering the motor than the ODP types.

Dust Ignition Proof – Often motors are used in dusty environments, such as woodworking. However most woodworking motors are not dust ignition proof. Such a motor must state the environment in which it can be used. It is often designated as “totally enclosed non ventilated (TENV).” Characteristics of these motors are the surface temperature can not get sufficiently hot to start a dust explosion, and if a dust explosion started in the motor the motor would contain the explosion. Since woodworking motors are rarely of this type so it is a good idea to clean the motor after it is used, and to use a dust containment system.

Frame (FR): The final item on the label that we will discuss is the frame. There are many dimensions that describe motors – diameter, length shaft size, shaft length, mounting bracket, to name a few. Some motors conform to a set of standards by the National Electrical Manufacturer’s Association (NEMA) code.

The frame designation usually has a two or three digit number followed by one or two letters. The number designates the distance between the motor shaft axis and the base of the motor, since that is usually the most critical for a replacement motor. For two digit numbers, most common in home woodworking, the distance is given in 16^{ths} of inches. For example a 56 frame motor is 3½” between the shaft axis and the base. For three digit numbers, the first two digits give the base to shaft-axis distance in quarters of an inch (instead of sixteenths) and the last digit is a number that represents (not equal to) the front-to-back distance between bolt holes in the mounting plate.

The letters indicate the motor shape and mounting. A few standard motor designations that you might encounter are T, a motor with a mounting base; TS, a motor with a short shaft for belt driven loads; C a face mounted motor; D, a flange mounted motor; J, a motor with a threaded shaft for a pump. Designations Y and Z are motors with some (not necessarily all) non-standard dimensions. Usually these are for specialty applications.

Other information on the label can include the manufacturer’s name and address, the type of bearings, whether the motor is thermally protected

by a resettable thermal switch, or any other special designation.

Next time we will discuss motor selection.

ITEMS WANTED OR FOR SALE

For Sale:

Shopsmith Power Station: Power system for using Shopsmith accessories. Asking \$300
Contact Dan Smith at 805-527-2914

Don't forget to send us items you have for sale or that you want. It's a good way to help each other find needed woodworking tools or supplies. See below for how to reach the editor.

WOOD VENDORS

Some time has passed since we printed this list of business that offer discounts to members of the Conejo Valley Woodworking Association. Since we are starting the summer, people are starting to think about new projects. Take advantage of the suppliers listed below, and let them know that you are a member of the CVWA.

Please inquire to the vendor for details on their products and discounts. Please bring your CVWA membership card to receive your discount.

Conejo Hardwoods
31275 LaBaya Drive
Westlake Village, CA 91362
818-889-0487

Discount Book Outlet
255 Easy Street, Unit E
Simi Valley, CA 93063
805-582-2665

Do-It Center
3775 Thousand Oaks B'lvd
Thousand Oaks, CA 91561
805-497-2753
(go to customer service desk)

Eisenbrand Hardwoods
4100 Spencer Street
Torrance, CA 90503
310-543-3576 (Orders: 800-258-2587)

H&M Hardwoods & Moldings
19 Aviator Street (Near 101 and Central)
Camarillo, CA 93010-8314
805-987-3877

Hardwood Specialties
7801 Canoga Ave. #8
Canoga Park, CA 91304

818-703-6472

Higgins Hardwoods
524 Pacific
Oxnard CA 93030
800-241-1883

Integrity Wood Products
7838 Alabama Ave.(Near Canoga & Strathern)
Canoga Park, CA 91304
Phone: 818-704-7490; FAX: 818-704-8912

Junior's Tools
813 E. Ventura Blvd.
Oxnard, CA 93030
Phone: 805-278-0937; Fax: 805-278-3919

Mayan Hardwoods
3130 Paseo Mercado #101 (Behind Price Club)
Oxnard, CA 90303
Phone: 800-937-8890; 805-981-4555
FAX: 805-981-4560

SEND US YOUR NEWSLETTER INPUTS!

Vendors that offer discounts to club members
Special topics, questions, or local events
Items of interest to club members
Items for sale, items wanted, letters and "Tips"

Inputs for the newsletter are needed by the 15th of the month before the meeting.
Ira Goldberg 805-495-7580 FAX: 805-373-4775
e-mail: ibgoldberg@rsc.rockwell.com
ibgoldberg@hotmail.com

Conejo Woodworkers Board of Directors

President	Stephen Case-Pall	805-491-3660
1st Vice Pres.	Gene West	805-483-1210
2nd Vice Pres.	Mike DeCaprio	805-388-0983
Treasurer	Marlene Peters	805-499-1015
Secretary.	Joe O'Rendy	805-492-2994
Fraternal Chair	Gene Strojek	805-523-3113
Director	Guy Buchwitz	805-639-0564
Director	Greg Charles	805-499-4890
Web Master	Glenn Packard	805-241-7505
Librarian	Jack Luhrsen	805-482-0657
Editor	Ira Goldberg	805-495-7580
Past President	John Tarpley	805-499-2953