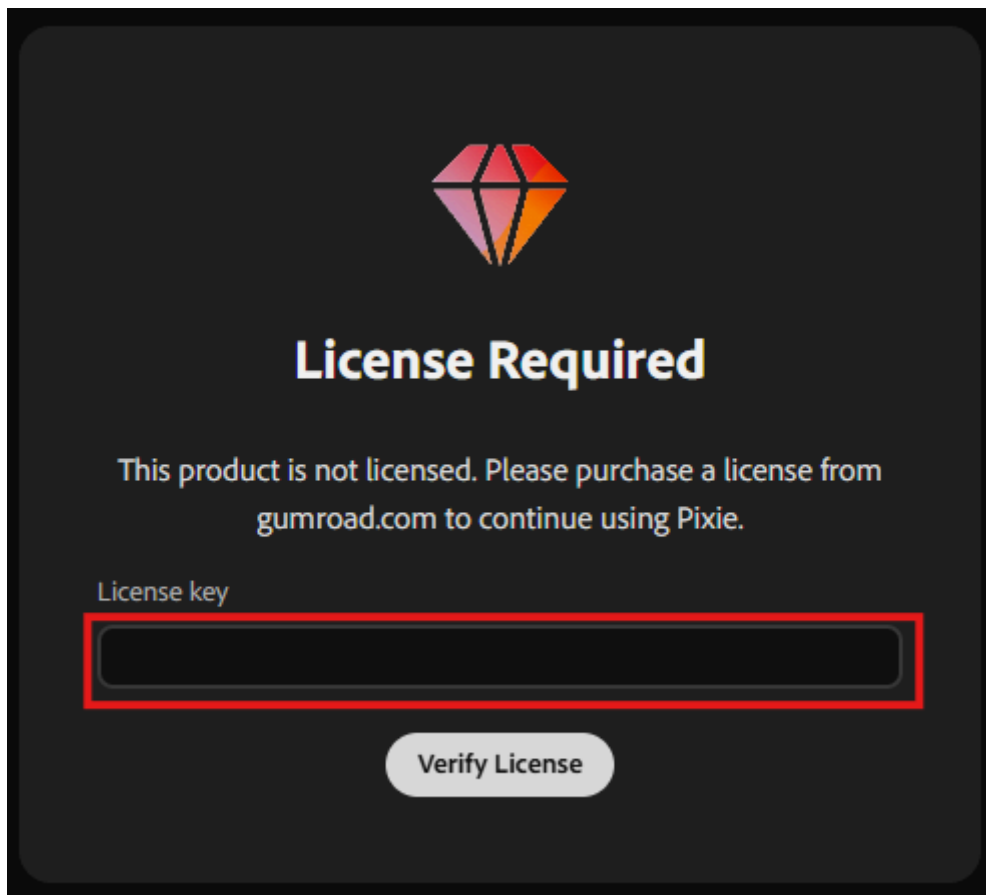


Licensing

Verification

On the first launch of the application, please enter the license you got when purchasing Pixie.



Getting Started

Pixie is a desktop application that helps you organize, tag, and search your image library using **local AI**. Everything runs on your machine — your images and data never leave your computer.

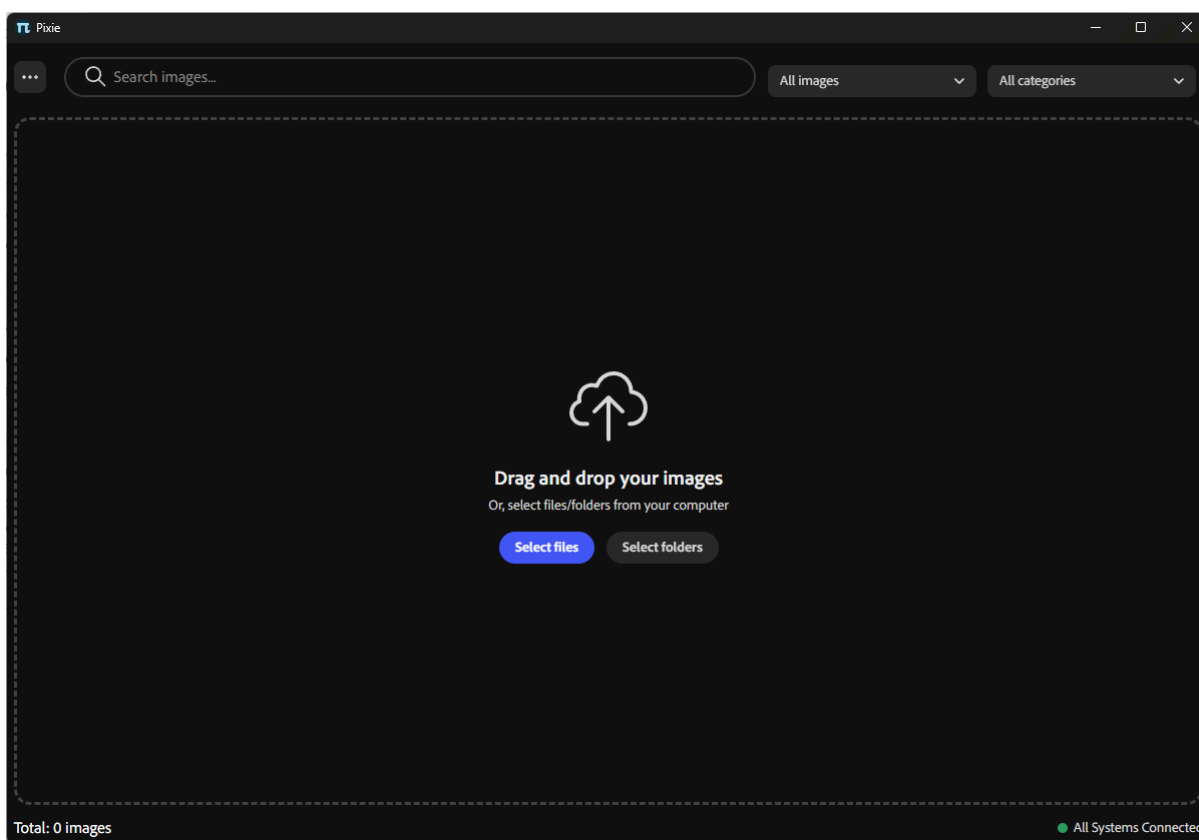
What You'll Need

Before you start, make sure you have:

1. **Pixie** installed on your computer (Windows/Mac)
2. An internet connection for the first **Auto-tag** run, so Pixie can download the local AI model
3. An internet connection for the first **Find Similar** run, so Pixie can download the local AI model

Step 1 — Launch Pixie

Open Pixie. The first time you launch the app, you'll see an empty library with a **drag-and-drop zone**.



Check the **status bar** at the bottom of the window.

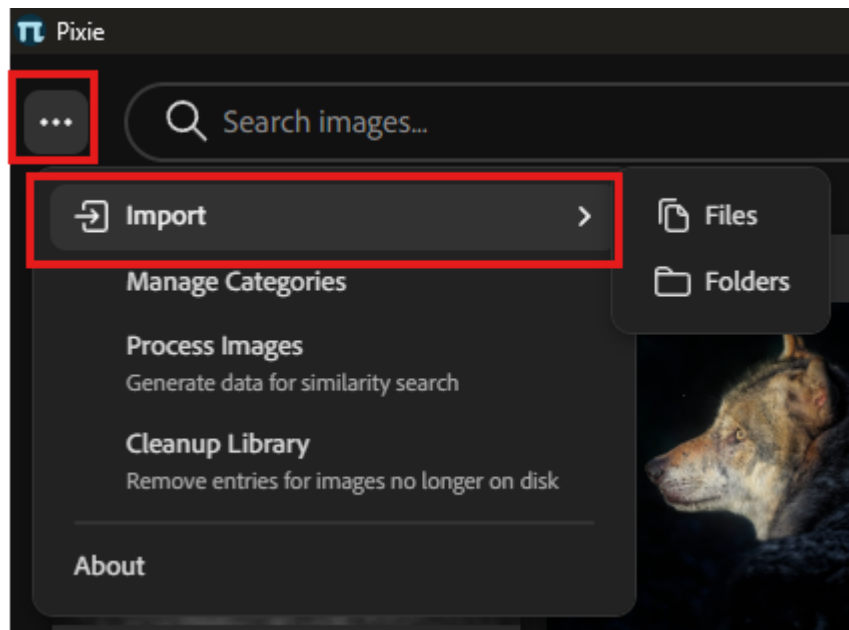
You can see the connection details:

Status	Meaning
● All Systems Connected	Backend is reachable
● No Connection	Backend is not responding

Step 2 — Import Your Images

There are two ways to add images to your library:

- **Drag and drop** image files/folders directly onto the Pixie window.
- Use the import controls in the empty-state panel or the ☰ menu at the top-left:
 - Click **Select files** to import one or more image files, or choose ☰ menu → Import → Files to import images.
 - Click **Select folder** or choose ☰ menu → Import → Folder to import images from a folder. This will also import images from all subfolders.

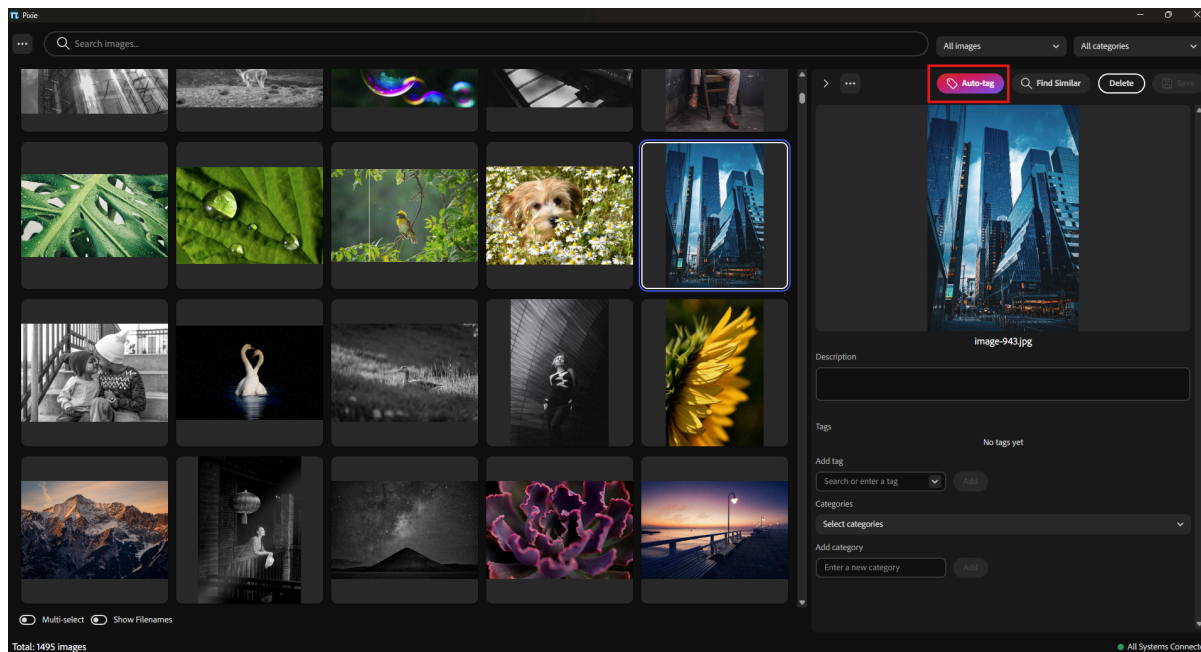


Pixie supports **PNG, JPG, JPEG, GIF, WebP, BMP, AVIF, TIFF, and SVG** files.

Note: when new images are imported, they are also automatically processed for similarity search.

Step 3 — Tag Your Images with AI

Once your images are imported, select one or more images in the grid, then click the **Auto-tag** button in the sidebar.



Make sure you have an internet connection for this feature because, on the first use, Pixie is going to download the model and store it in the **.pixie** directory, under your user profile. After this went successfully, the model is just going to be available for all future requests, and no internet connection is required. Pixie will send each image to the local AI model, which will analyze the image and generate a description and relevant tags — all without sending anything to the internet.

Tip: You can select multiple images and click **Auto-tag All** to process them in batch. A progress notification will appear, and you can cancel at any time. You can auto-tag images from the contextual menu (right-click on selected images).

Step 4 — Edit Tags and Details

Click on any image and make sure the **sidebar** is open, then you can:

- **Edit the description** — a free-text summary of the image.
- **Add or remove tags** — use the search box to find existing tags, or type a new one and click **Add**.
- **Assign categories** — select from existing categories or create new ones on the fly.

— □ ×

All images ▾ All categories ▾

> ⋮ Auto-tag Find Similar Delete Save




image-943.jpg

Description

A low-angle view of a modern cityscape featuring tall skyscrapers with reflective glass facades under a blue sky.

Tags

city × skyscrapers × reflective × urban × glare × blue ×

Add tag

Search or enter a tag ▾ Add

Categories

Select categories ▾

Add category

Enter a new category Add

● All Systems Connected

When you're done editing, click **Save** to persist your changes.

Note: If you navigate away with unsaved changes, Pixie will prompt you to save, discard, or cancel.

Step 5 — Search and Filter

Use the **search bar** at the top to find images by their tags, description, or other metadata.



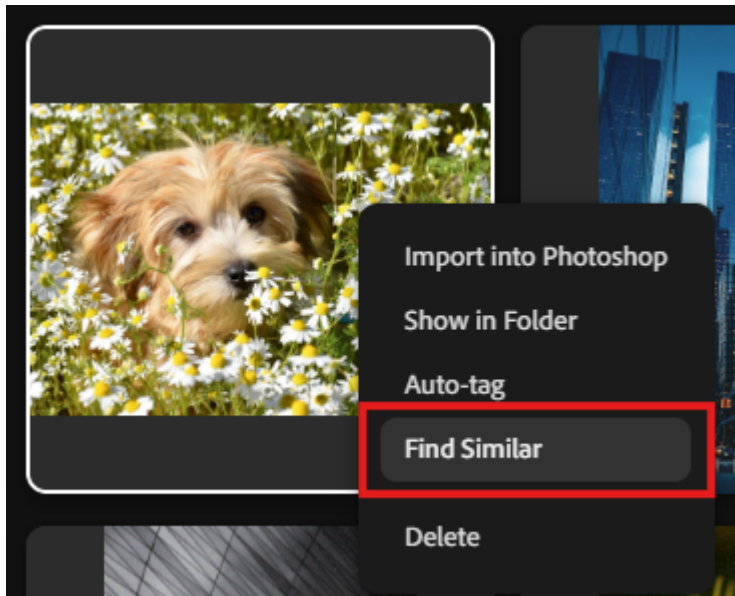
You can also narrow results using the filter dropdowns:

Filter	Options
Image filter	<i>All images</i> or <i>Unprocessed</i> (without tags or description)
Category filter	Filter by one or more categories

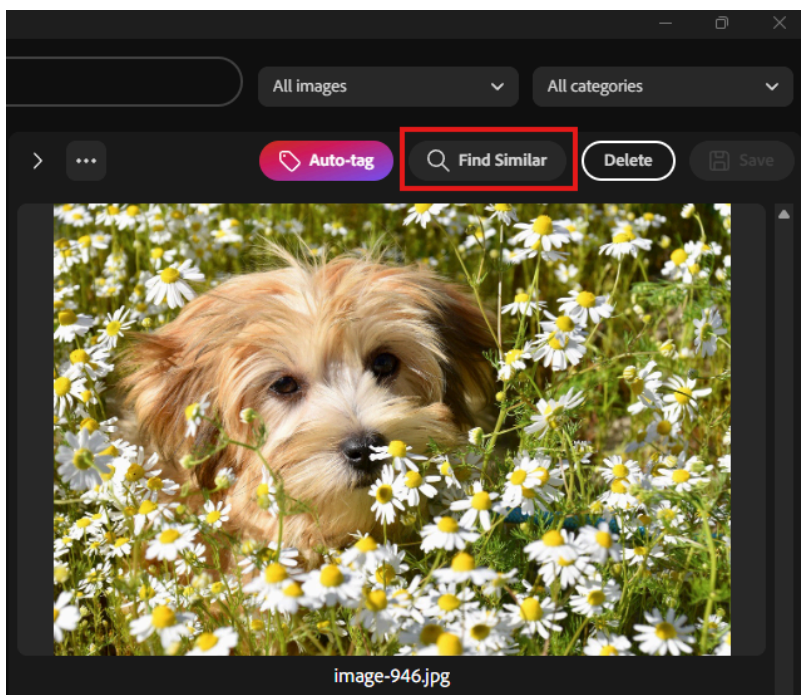
Additional Features

Find Similar

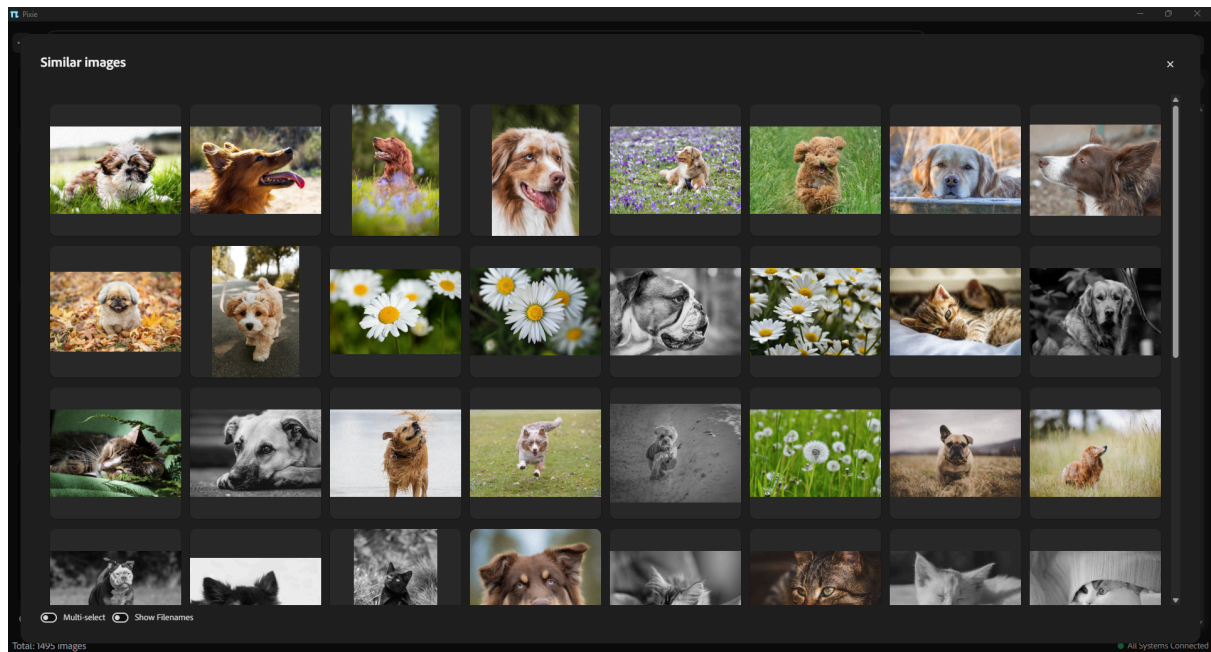
Right-click on a single selected image and select Find Similar to find similar images.



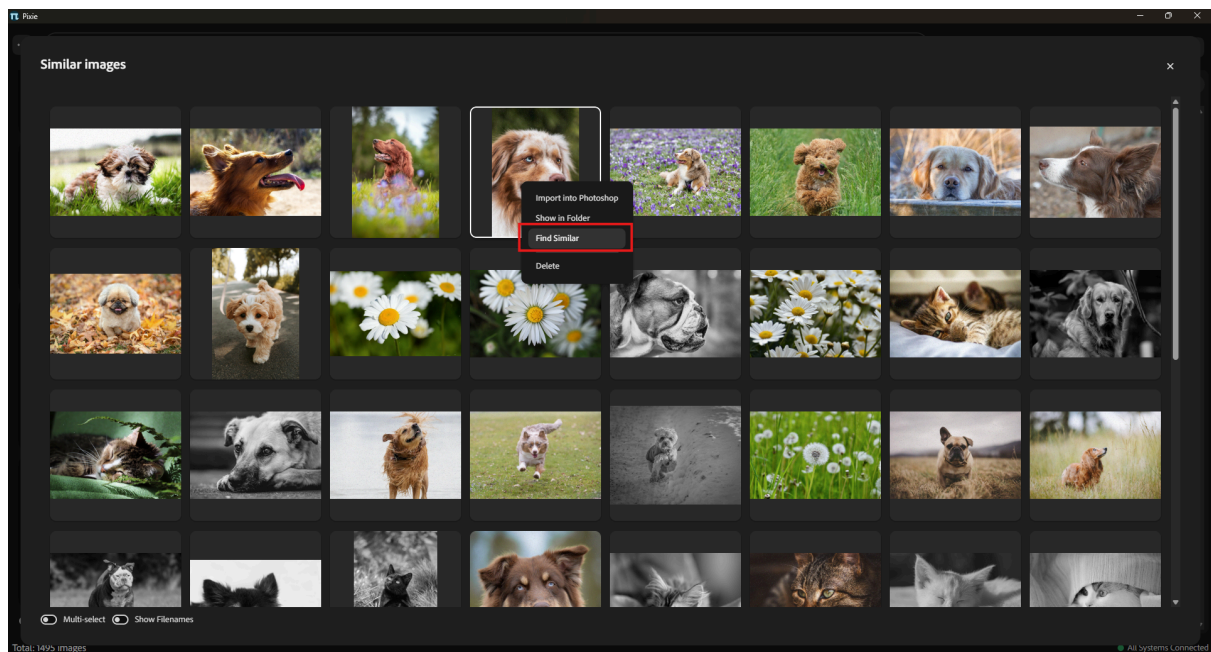
This can also be done from the Sidebar's menu.



After clicking Find Similar, the new dialog will launch, showing similar images based on the selected image.

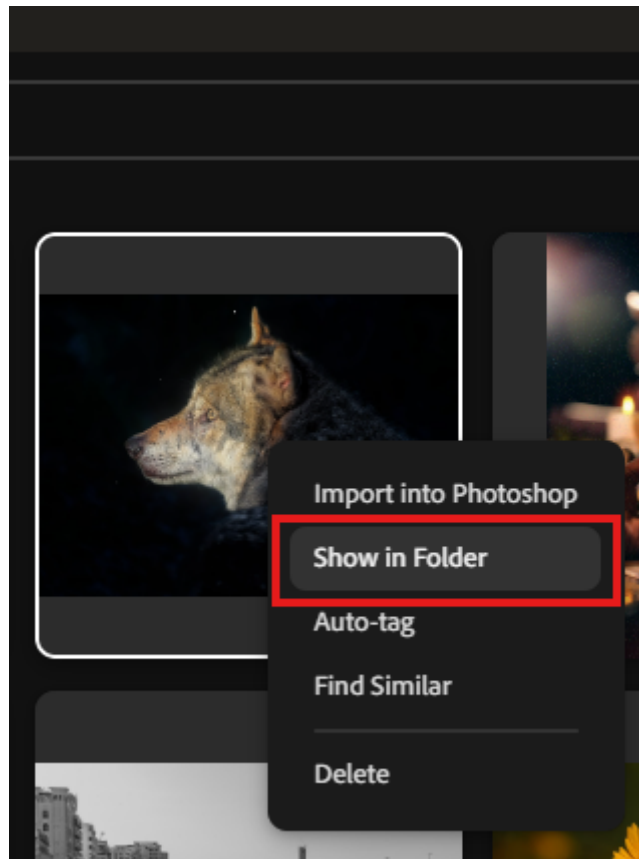


This can be repeated within the Similar images dialog by selecting and the image, right-clicking, and selecting Find similar image again.



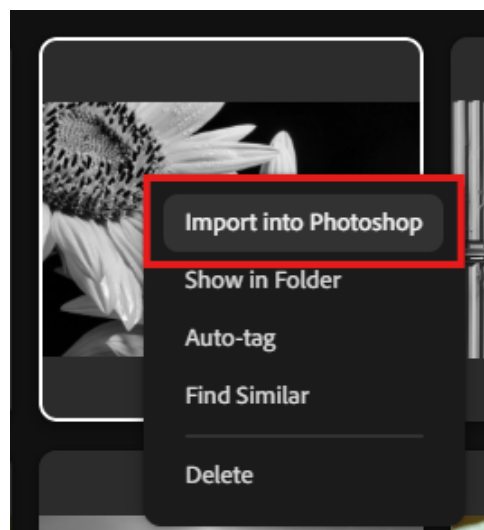
Show in Folder

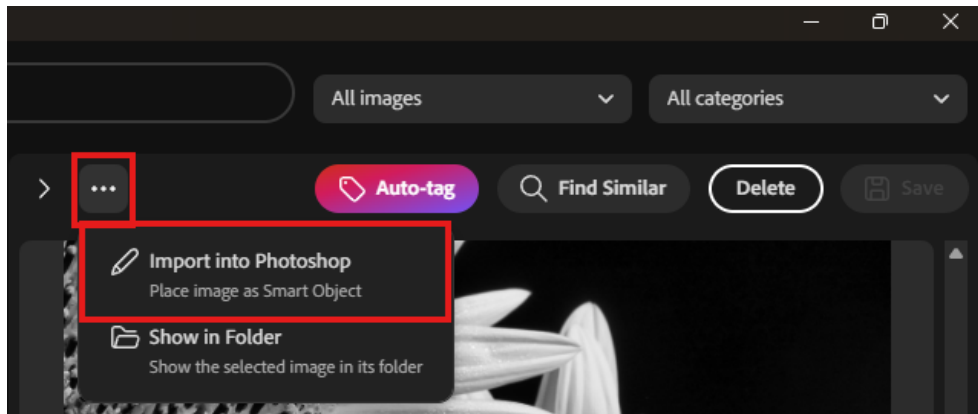
Right-click on a single image and select **Show in Folder** to reveal it in your system's file explorer.



Import into Photoshop

Right-click on one or more selected images and select **Import into Photoshop** to open them directly in Adobe Photoshop as smart objects. You can also do this from the **sidebar's** **☰ menu**.

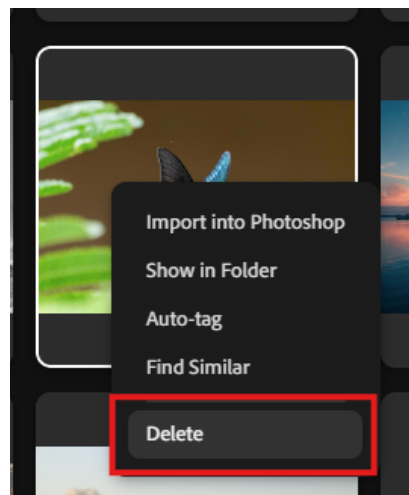




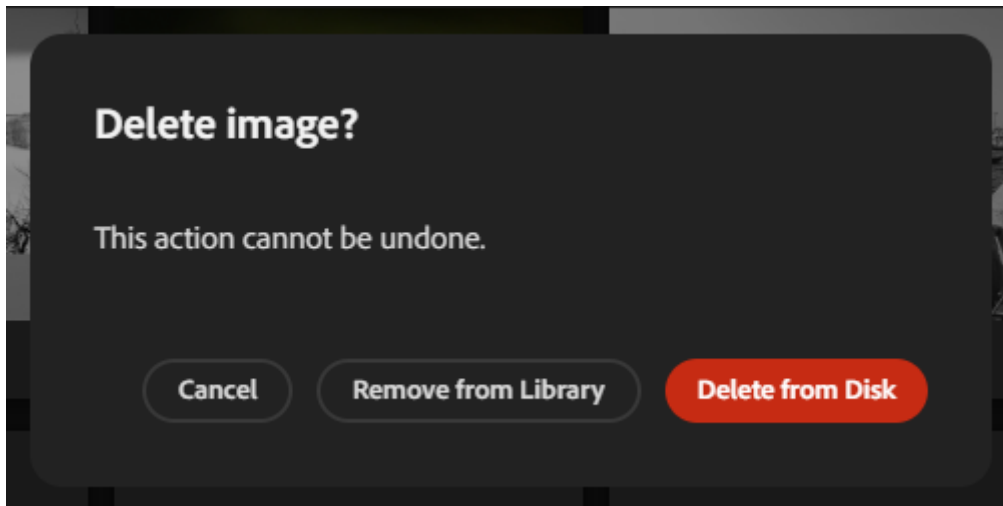
Note: If you have a document already open in Photoshop, this will automatically place the images as smart objects. Otherwise, it will create a new document with the imported images as smart objects.

Removing images

Select one or more images and press **delete** on the keyboard to remove them. You can also right-click on the selected images and choose delete.

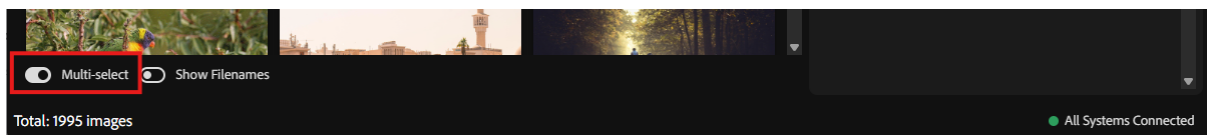


In both ways, the dialog to remove the images will open, and you can choose to delete them physically from the hard drive or to just remove them from the library.



Multi-select

Click on multiple images in the grid to select them. Make sure to have the **Multi-select** switch enabled:

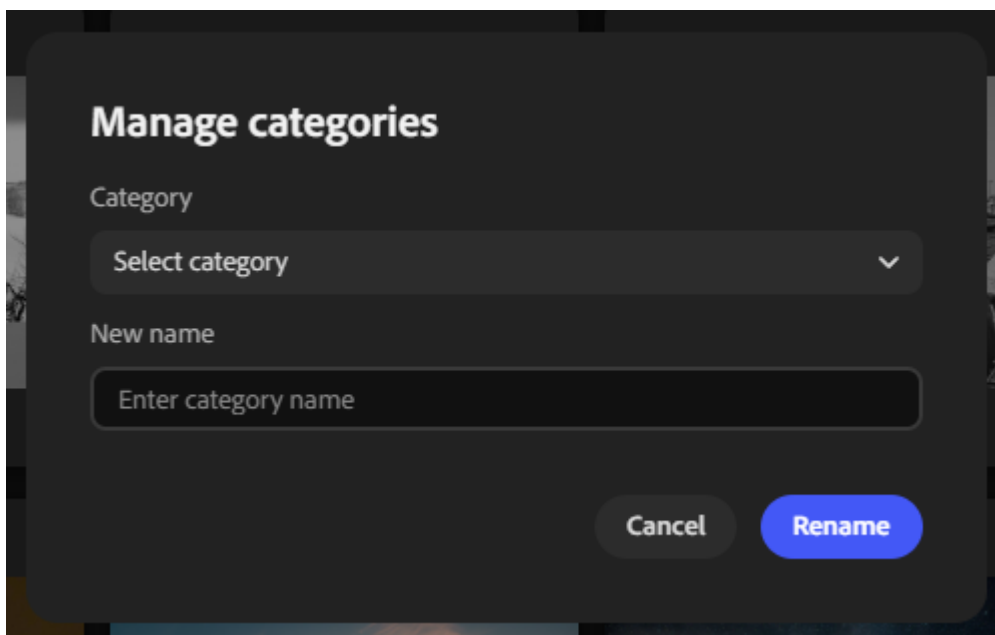
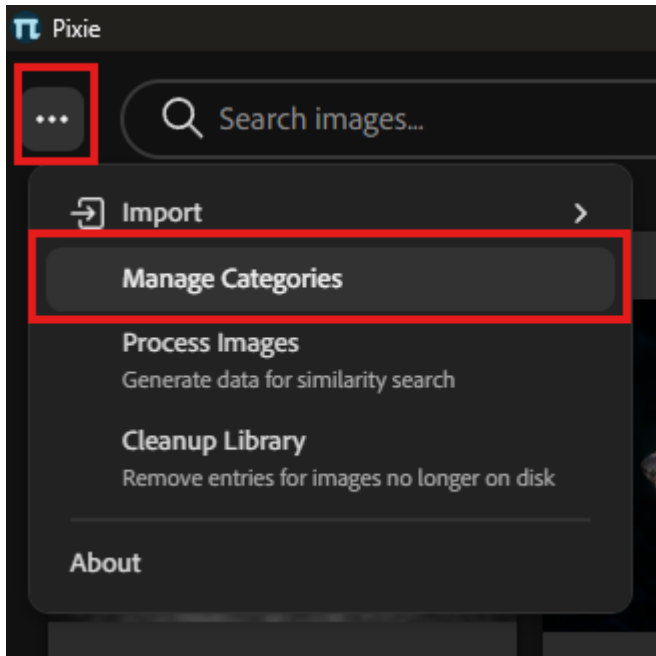


When multiple images are selected, you can:

- **Auto-tag all** selected images at once
- **Delete** selected images in bulk
- **Assign categories** to all selected images

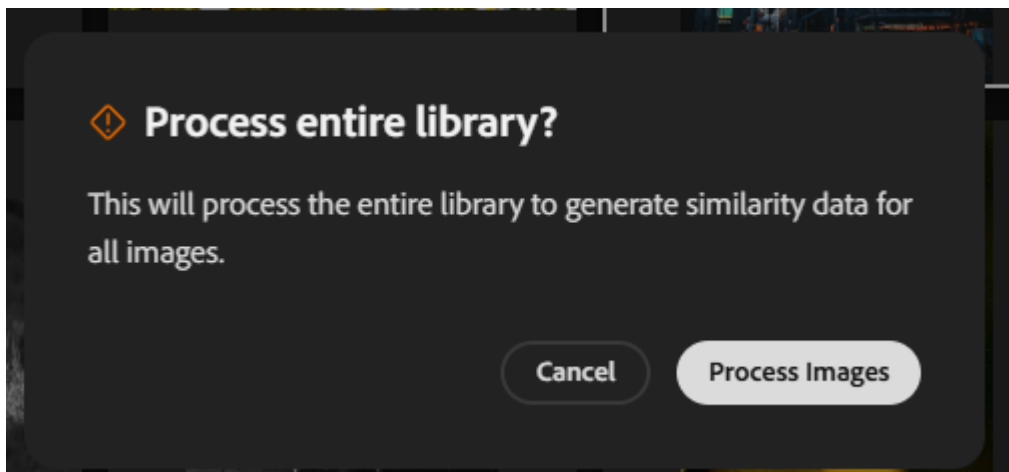
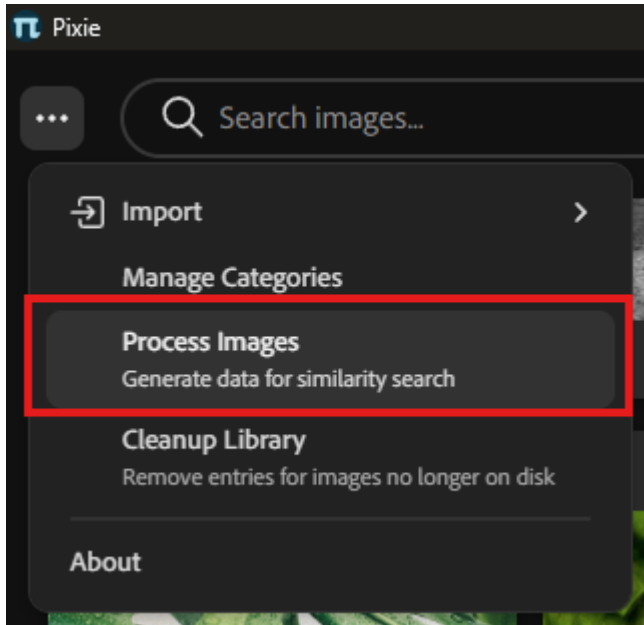
Manage Categories

Use **☰ menu** → **Manage Categories** to rename your existing categories.



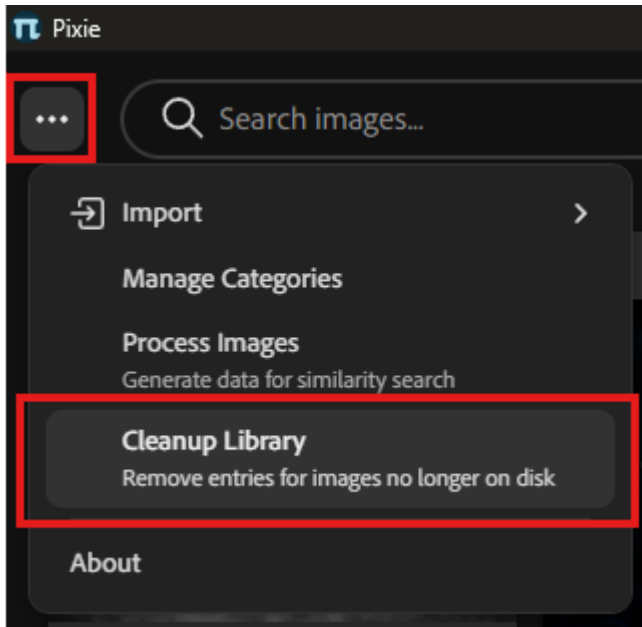
Process Images

Use **☰ menu** → **Process images** to generate data for similarity search. This happens automatically when new images are imported into Pixie, but in cases where you want to run this manually, you can do it from here. This will process the entire library (but only the images that haven't been processed yet).



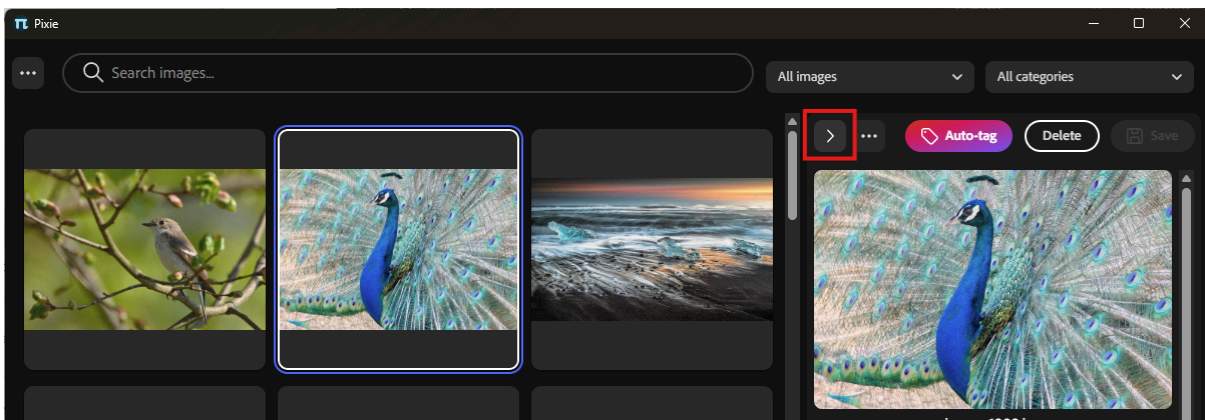
Cleanup Library

Use **☰ menu** → **Cleanup Library** to remove entries for images that no longer exist on the disk.



Toggle sidebar's visibility

You can choose to hide the sidebar and give the image gallery more space. This can be achieved by clicking the right arrow button in the sidebar. You can also show the sidebar again by clicking this button.



Troubleshooting

Problem	Solution
Status bar shows "No Connection"	Make sure Pixie's backend started correctly. Try restarting the app. Also, make sure that the antivirus doesn't block the backend.
Auto-tag doesn't start	Check your internet connection on the first run, then retry so Pixie can download the model.
Auto-tag still fails after first run	Verify the model files exist inside the .pixie/models folder on your system and restart the app.
Images won't import	Verify the files are in a supported format (PNG, JPG, GIF, WebP, etc.).
Need to reset the library	Close the application completely, delete the `app.db` file from the `.pixie` folder, and restart.
Find Similar returns no results	Run ☰ menu → Process Embeddings first. The feature requires embeddings to be generated for your images.
Find Similar results seem incorrect	Re-run Process Embeddings after importing new images to ensure all images have up-to-date embeddings.
Need to reset the library	Close the application completely, delete the app.db file from the .pixie folder, and restart.

App & Data Locations

If you need to completely reset the application, clear your library, or check if the local AI model was downloaded, the files are stored in the following locations:

Application Installation Location

Windows: *C:\Program Files\Pixie* (or the folder you selected during installation)

Data Folders (*.pixie* directory)

- **Windows:** %USERPROFILE%*.pixie*\ (e.g., C:\Users\YourName*.pixie*\)
 - **Database:** %USERPROFILE%*.pixie*\app.db
 - **Models:** %USERPROFILE%*.pixie*\models\
- **macOS:** ~/.*.pixie*/
- - **Database:** ~/.*.pixie*/app.db
- - **Models:** ~/.*.pixie*/models/

Tips & Tricks

- **Organize with categories** — Group related images into categories for easier filtering later.
- **Review auto-generated tags** — AI tags are a great starting point, but you can always edit or remove them manually.
- **Use search** — Pixie searches across tags and descriptions, so well-tagged images are easier to find.