

## TRIADE PRO MAXI



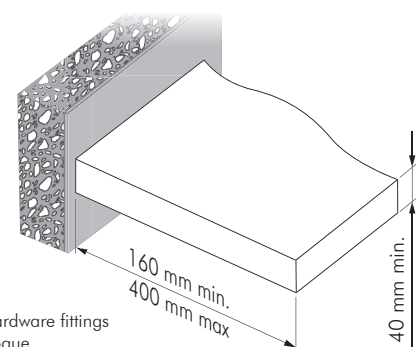
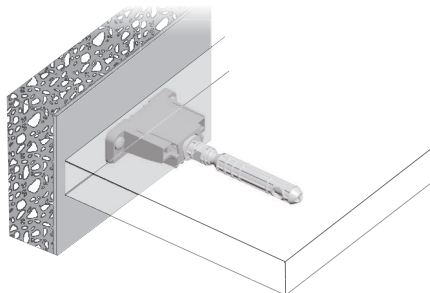
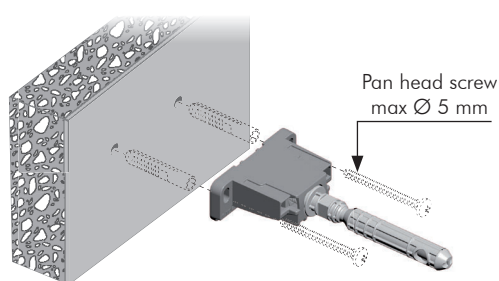
40 mm min.



40 kg per pair for shelf 400 mm deep

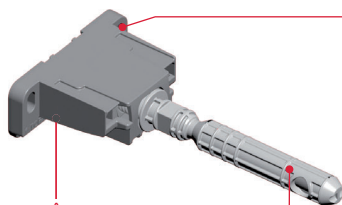


## SPECIFICATION



It is the responsibility of the customer: to ensure the wall is of a suitable quality to hold the shelf fixing in place and to use the proper hardware fittings according to the construction of the wall. For more specific information, please refer to the WARNINGS section at the end of the catalogue.

## ADJUSTMENT

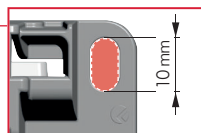


**VERY IMPORTANT**

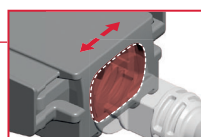


Screw to lock when  
adjustments are finished.

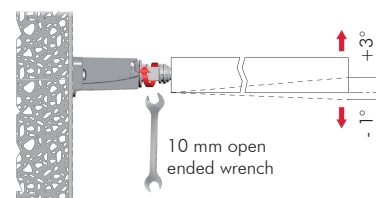
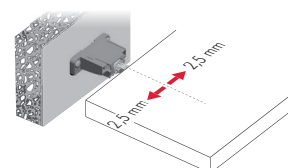
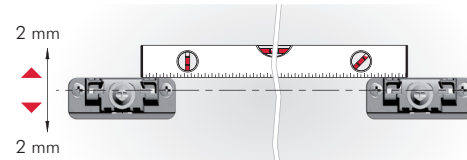
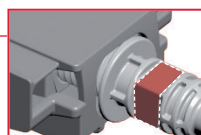
## BRACKET ALIGNMENT



## LATERAL ADJUSTMENT

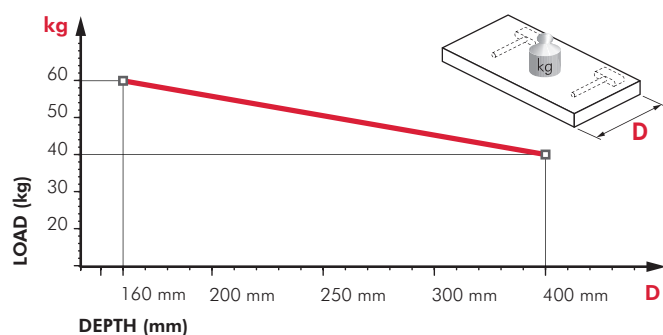


## INCLINATION ADJUSTMENT

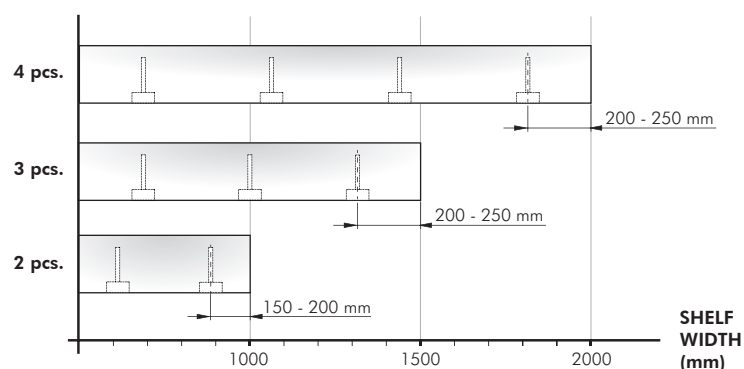


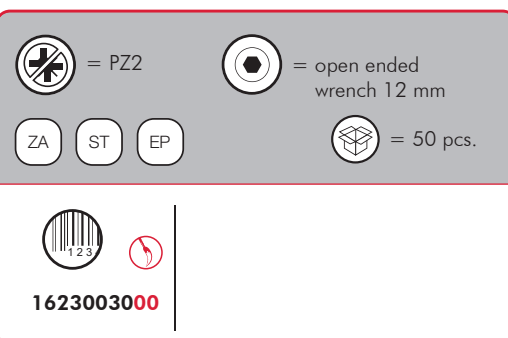
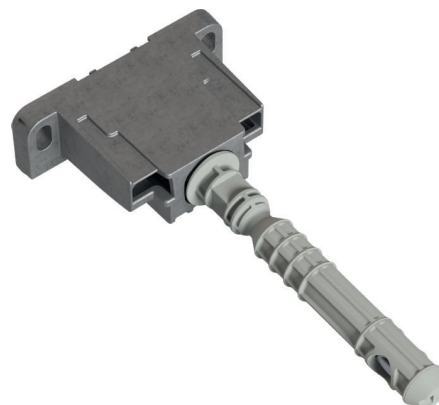
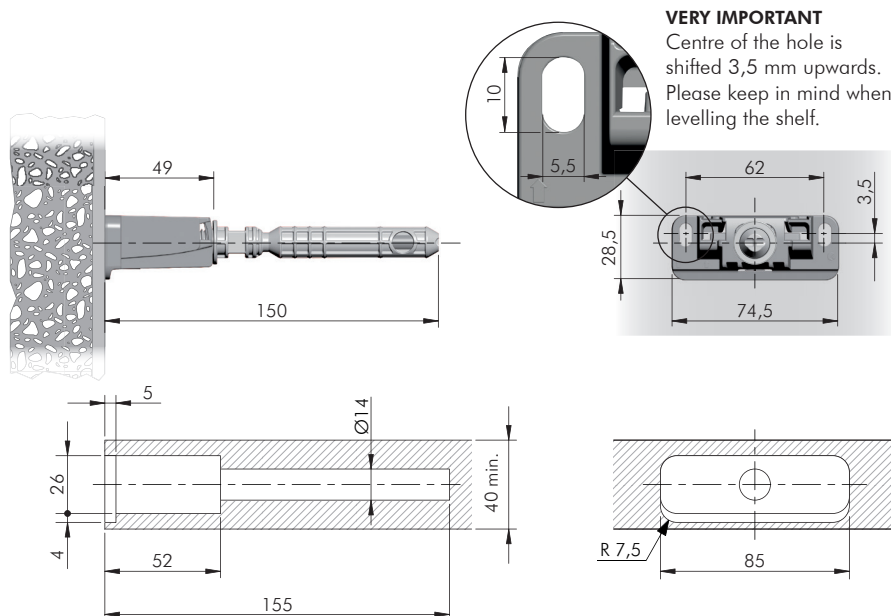
## LOADING CAPACITY CHART

(The figures refer to 2 shelf supports)

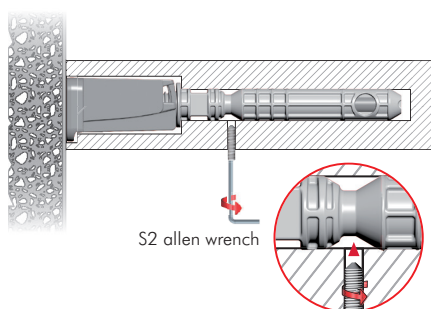
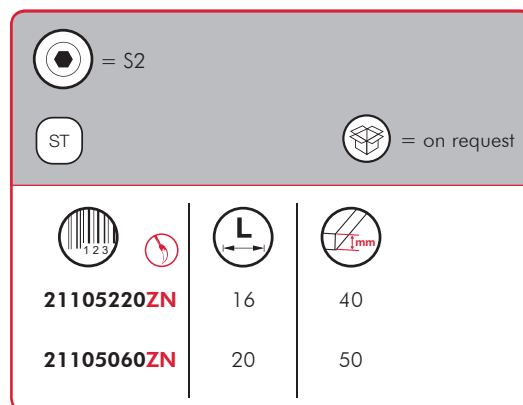
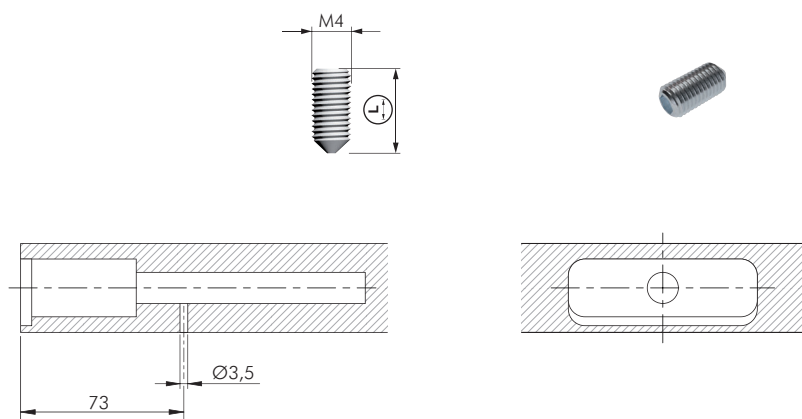


## RECOMMENDED NUMBER OF TRIADE PRO MAXI PER SHELF

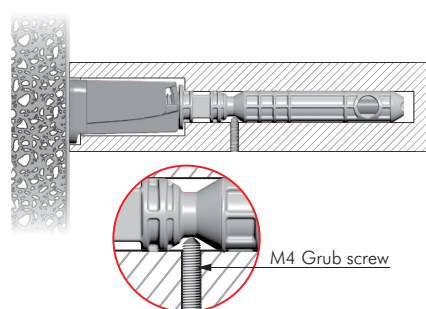




## OPTIONAL DRILLING FOR SECURITY LOCKING



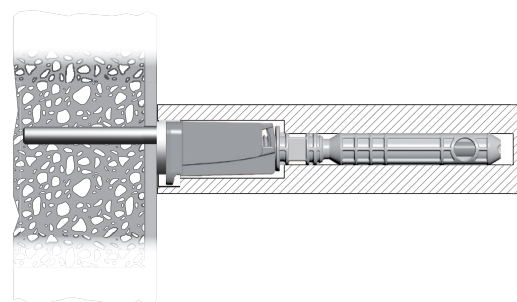
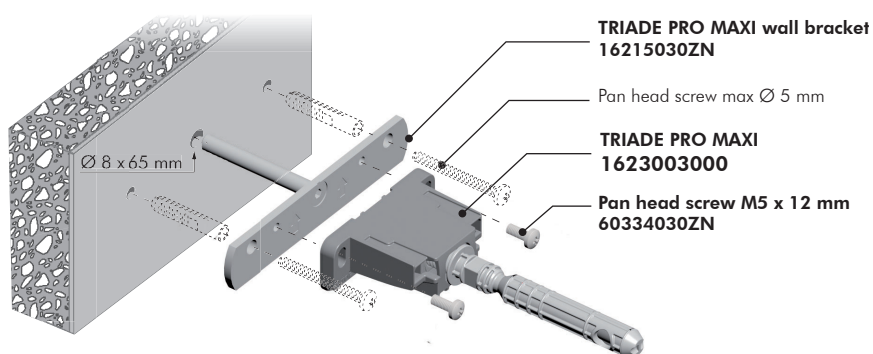
S2 allen wrench



M4 Grub screw

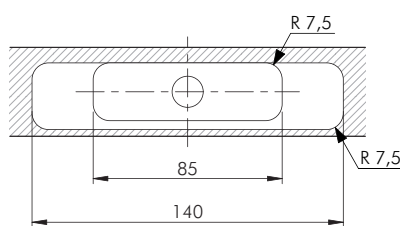
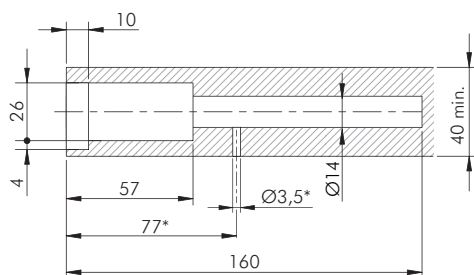


## TRIADE PRO MAXI AND BRACKET

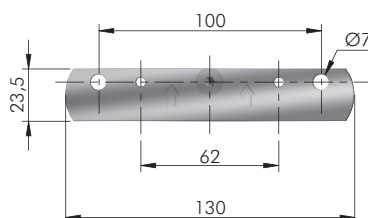
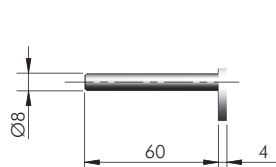


The wall bracket guarantees a more stable fixing to the wall.

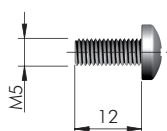
It is the responsibility of the customer: to ensure the wall is of a suitable quality to hold the shelf fixing in place and to use the proper hardware fittings according to the construction of the wall. For more specific information, please refer to the WARNINGS section at the end of the catalogue.



\* Optional drilling for security locking with M4 grub screw placed underneath in alignment with the cavity. For details refer to Triade Pro Maxi section.



## FIXING ACCESSORY



ST

= 100 pcs.



16215030ZN



ST

= 500 pcs.



60334030ZN