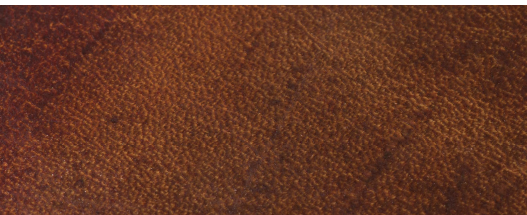


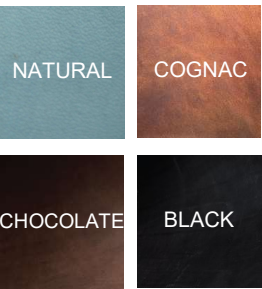
## DELLA LEATHER RADERMECKER®

Inspired by the regions of the great Canadian north, the Della's mission is to combine robustness and aesthetics. Available from 1.5 mm in neck and 4 mm in ½ back and, this full grain leather of beef and bull has one of the most important resistance and retains a solidity of finishing. After mineral tanning, immersion in a bath of grease protects it from disturbances in outside environment and temperature variations. Ideal partner for outdoor uses, it is reinforced during its solicitations and lives by your side.

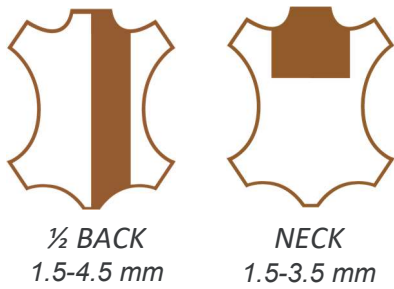
*Thickness:* 1.5-4.5 mm  
*Dyeing:* Natural or tinted in bath for the other colours  
*Coating:* Aniline



### AVAILABLE COLORS



### SKIN AREA



### USE EXAMPLES

- Reins
- Bridles
- Harness
- Flap leather

### ON REQUEST

- Shaving to refine the thickness of the leathers

### CHARACTERISTICS

