

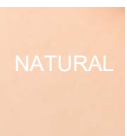


YOSEMITE LEATHER **RADERMECKER®**

The Yosemite leather is a full-grain leather of beef and bull with a rough and dry appearance. It offers a dense patina in its use. It is not intended to suffer torsion or sewing efforts, but will satisfy a support and a damping under pressure. Open full-grain leather, it will absorb moisture while retaining its properties.

Thickness: 2-2,5 mm
Dyeing: Non-tinted
Coating: Natural

AVAILABLE COLOR



SKIN AREA



USE EXAMPLES

- Orthopedic sole
- Moldings

ON REQUEST

- Shaving to refine the thickness of the leathers

CHARACTERISTICS

