



2022

Annual Security Report
January 1, 2021 – December 31, 2021

Trinity Law School
2200 North Grand Avenue
Santa Ana, California
Phone: 800-922-4748

Worship in Faithfulness. Mentor in Hope. Build Bridges in Love.

Department of Campus Safety and Security Services
SERVE . PROTECT . EDUCATE

Mission Statement

The mission of Campus Safety and Security Services is to faithfully serve and protect the Trinity community in collaboration with Student Life and Facility Services in order to reach the goal of Christ-centered academic excellence.



TABLE OF CONTENTS

Emergency Contact Information.....	4
Statement of Interagency Cooperation	6
Timely and Emergency Warning Notices	6
Voluntary Confidential Reporting	9
Access to Campus Facilities	10
Maintenance of Campus Facilities	10
Violence Prevention Policy	11
Sexual Assault.....	11
Criminal and University Charges	12
Consent.....	14
Title IX Coordinator	14
Registered Sex Offenders	15
Security Awareness and Crime Prevention	15
Tobacco, Drug and Alcohol Policy	16
Monitoring Off Campus Criminal Activity	16
Preparation of the Crime Statistic Report.....	16
Annual emergency/evacuation drills	17
Daily Crime Log	17
Clery Report Geography Classifications.....	17
Crime Definitions.....	18
Clery Geography	22
Release of Clery Report Statistical Data.....	23

Emergency Contact Information

All students, employees, and guests are encouraged to promptly report incidents of crime, suspicious activity and emergencies as noted below:

LOCAL EMERGENCY NUMBERS:

Ambulance.....	911
Fire.....	911
Police.....	911
Poison Information.....	800-942-5969
Rape/Sexual Assault Hotline.....	714-957-2737
Domestic Abuse.....	714-935-7956
Discrimination/Harassment.....	847-317-7085

**Santa Ana Police Department
1050 W. Civic Center Drive
Santa Ana, California, 92703
Non-emergency phone number: 714-245-8665**

**Orange County Fire Authority
174 S Orange St
Orange, CA 92866
Non-emergency phone number: 714-288-2543**

Dear Students, Faculty, Staff and Visitors:

The “Jeanne Clery Disclosure of Campus Security Policy and Campus Crime Statistics Act of 1998,” commonly referred to as the “Clery Act,” requires institutions of higher education receiving federal financial aid to report specified crime statistics on college campuses and to provide other safety and crime information to members of the campus community. The following safety and security report demonstrates the University’s commitment to a safe and secure learning environment.

Students and staff are encouraged to stay alert and take the necessary precautions to prevent criminal activity. This office consistently evaluates and updates policies that directly affect our students’ safety and learning experience.

Trinity Law School welcomes you to this academic year and will gladly partner with you to address any concerns you may have as you pursue your occupational and educational goals.

Paul Stalnecker
Registrar

Statement of Interagency Cooperation

Trinity Law School has a No Arrest-No Detainment Policy. Our Campus Services personnel are required to observe and report any criminal or suspicious activity to the Santa Ana Police Department. Although Trinity Law School does not have a security department per se Campus Services personnel works closely with the Santa Ana Police Department to enhance the safety and security of the entire campus. The Santa Ana Police Department is encouraged to, and preforms frequent patrols of our parking areas. The Santa Ana police headquarters is located 2.5 miles from campus and the Orange County Fire Authority is located 1.5 miles from the Campus, thereby facilitating a quick response in case of any type of emergency. Trinity Law School does not have any written memorandum of understanding or any other type of written agreement with local police agencies.

Crime Reporting

The University relies on every community member to contribute to safety and security on campus by reporting crime and suspicious activities in a timely manner, and by using common sense when going about daily activities. Employees and students can report crimes in the following ways:

- 911 from a cell phone or 9-911 from a campus phone
- Campus Security at the front desk
- Campus Services at 714-796-7132

Timely Warnings

Trinity issues timely warnings when it determines that an incident from the Clery crime category presents a serious or ongoing threat to students and employees from either on or off campus. These crimes include:

- Criminal homicide (murder and non-negligent manslaughter)
- Negligent manslaughter
- Sex offenses — includes rape, fondling, incest, and statutory rape
- Robbery
- Aggravated assault
- Burglary
- Motor vehicle theft

- Domestic Violence
- Dating Violence
- Stalking
- Arson

Hate crimes that include:

- Larceny/Theft
- Simple Assault
- Intimidation
- Destruction/Damage/Vandalism of Property

Timely Warnings will be issued with information that promotes safety and provides guidance to individuals to protect themselves from a serious or continuing threat to the campus population. A Timely Warning will be sent, unless issuing a notification will, in the professional judgment of those responsible, compromise efforts to assist victims or contain, respond to, or otherwise mitigate the emergency. The type and scope of the Timely Warning will be determined by the:

- Operations Manager, or his designee,
- Director of Communications
- Any member of the University Leadership Team

By any or all of the following means:

- Law School email system
- Law School Text Messaging Alert system
- Social media outlets
- Postings in the Student Lounge
- Trinity Law School web site tls.edu

These alert systems will be tested and evaluated twice a year.

Emergency Response and Evacuation Notification

The Clery Act requires every qualifying institution, without exception, to have and disclose emergency response and evacuation procedures in response to a significant emergency or dangerous situation involving an immediate threat to the health or safety of students or employees occurring on the campus. In the event a situation arises on or near campus the Operations Manager, or his designee, the Director of Communications or any member of the University Leadership Team will issue the appropriate warning and critical information that will promote the safety and wellbeing of students and staff without delay by one or all of the following means:

- Law School email system
- Law School Text Messaging Alert system
- Social media outlets
- Postings in the Student Lounge
- Trinity Law School web site tls.edu

Examples that may require an emergency notification include the following:

- Approaching severe or extreme weather
- Gas leak
- Fire
- Terrorist incident
- Armed intruder
- Bomb threat
- Civil unrest or rioting
- Explosion

Anyone with information related to an emergency or dangerous situation which would warrant a timely warning or emergency notification should report that information without fear of reprisal to:

- Campus Services (front desk) directly from any campus phone by dialing x7132 or by dialing from your personal phone 714-796-7132.

In any emergency, it is always appropriate to contact local emergency services by phoning 911 (9-911 from a campus phone).

Mandatory Reporting

Some employees, by nature of their positions, are required to report any instances of criminal activity that they become aware of. At Trinity, we refer to these employees as "mandatory reporters." These University faculty and staff members have "significant responsibility" for students and campus activities and are required to properly report crimes to Security for possible Timely Warnings and to be included in the Annual Security Report.

All University community members that are considered Campus Security Authorities are required to immediately report the following situations to an appropriate individual in authority including but not limited to, Campus Services Personnel, Santa Ana Police or an appropriate individual in authority. Any listed Clery Act crime.

Any situation judged to present a serious or ongoing threat to students and employees

Voluntary Confidential Reporting

If you are the victim of a crime and do not want to pursue action within the University System or the criminal justice system, you may still want to consider making a confidential report by speaking with a **confidential advocate** at 847-317-4170. With your permission, Trinity can file a report on the details of the incident without revealing your identity. The purpose of a confidential report is to comply with your wish to keep the matter confidential, while taking steps to ensure the future safety of yourself and others. With such information, the University can keep an accurate record of the number of incidents involving students, determine where there is a pattern of crime with regard to a particular location, method, or assailant, and alert the campus community to potential danger. Reports filed in this manner are counted and disclosed in the annual crimes statistics for the institution. Acts of sexual violence or harassment may be shared with confidential resources; they include **these college officials, who by law, must maintain complete confidentiality and may not disclose the details of an incident.** These include Campus "Pastoral Counselors" and Campus "Professional Counselors", when acting as such, are not considered to be a campus security authority and are not required to report crimes for inclusion into the annual disclosure of crime statistics. As a matter of policy, they are encouraged; if and when they deem it appropriate, to inform persons being

counseled of the procedures to report crimes on a voluntary basis for inclusion into the annual crime statistics.

Access to Campus Facilities

The Law School facilities exist to support the institutions principal functions of teaching, research, and service. The institution generally seeks to maintain open access to its facilities, but Trinity's campus is primarily intended for use by students, faculty, staff and their invited guests. Trinity maintains and regularly exercises the right to restrict access to its facilities. For example, access to the basement and utility facilities are restricted for safety and operational reasons. In instances where a person, through his/her prior actions, has demonstrated an inability or unwillingness to conduct him or herself in accord with University policy or applicable law, that person can be "banned" from campus and denied access to all TLS property and facilities. The university acts to maintain secure and safe facilities for use by its students, faculty, staff and invited guests through the work of Campus Services, through its internal Key and lock system and key related policies, through the regular work of both the maintenance and custodial personnel, by providing adequate interior and exterior lighting, and by fostering an awareness among members of the Law School community about safety and security matters and the need for timely reporting to the proper authorities of criminal or suspicious activities.

Maintenance of Campus Facilities

Trinity Law School is committed to campus safety and security. The Operations Manager regularly conducts surveys of the campus property to ensure adequate lighting, the landscape is appropriately controlled, and street and pathways are kept clear in. Student, faculty and staff are encouraged to notify the Facilities Manager at extension 7123 or the Operations Manager at extension 7141 for any deficiencies they discover. Repairs are addressed as soon as possible, usually by the end of the business day.

Violence Prevention Policy

The Trinity community is committed to the prevention of violence, harassment, bullying, and intimidating behavior. Except for sworn police officers, weapons of all types are banned from campus. It is illegal to bring or possess ANY firearm on any California school, college or university campus. Firearm restrictions include but are not limited to any air powered gun, including paint ball gun, BB gun, pellet gun or any toy that resembles a gun. In addition to firearms, swords, knives, and explosives of any kind including fireworks are banned from campus. Any violation of this policy should be reported to Campus Services personnel or the Santa Ana Police department.

Sexual Assault

Trinity International University strictly prohibits the crimes of sexual assault, domestic violence, dating violence and stalking. This Policy will be widely distributed on campus so that all students, faculty, and staff at the beginning of each academic year.

What is Sexual Assault?

Sexual Assault is any kind of sexually offensive act against another person, any verbally offensive demand or suggestion, and any intentional touching of another person's body without mutual consent. The university defines these acts as including, but not limited to, the following:

1. Rape/sexual assault (gang, acquaintance, stranger)
2. Acts on a person who is not conscious or able to give consent
3. Indecent exposure
4. Direct or indirect threats linked to sexual propositions or activity
5. Coerced sexual activity
6. Sexual propositions
7. Sexual battery, the unwanted touching of an intimate part of another person, such as a sex organ, buttocks, or breasts.
8. Use of intoxicants, including alcohol, which impair the victim's ability to give consent

Sexual Assault Policy

If you are sexually assaulted go to a safe place.

Call the Santa Ana Police at 911 or 715-245-8665. Reporting of a sexual assault is imperative for both the apprehension of the offender and for the collection of evidence that is vital to the support of the complaint. Even if you choose not to file charges or the rape occurred out of the area, the police should be notified to take a report and provide you with the proper medical treatment and counseling that you deserve. A female police officer, if not present, is always available and can be requested to take the report.

Do not change clothes, shower, bathe, or douche even though it is natural to feel a strong need to do so. If there has been oral penetration, do not brush your teeth, smoke, chew gum, or eat anything. It is crucial that valuable evidence is not destroyed in case you decide to press charges.

Call a support person—a trusted friend or family member. Do not try to go through this alone. Do not blame yourself.

Criminal and University Charges

A victim has the option of bringing criminal and/or university charges or neither against his or her assailant.

In terms of criminal charges, sexual assault is a crime that is prosecuted by the state. The Santa Ana Police or the Associate Dean can assist you in contacting the proper officials to arrange for legal representation.

The student considering formal charges against another student should talk initially to the Associate Dean.

The victim is entitled to be accompanied by a current member of the Trinity community — student, faculty, staff member, or administrator — who can provide emotional support during initial disciplinary hearings.

- Accuser and accused are entitled to the same opportunities: to have others present during the disciplinary proceeding
- Both accuser and the accused will be informed of the outcome of any institutional disciplinary proceeding brought about from an alleged sex offense. (This does not constitute a violation of FERPA.)

For the purpose of this policy, the outcome of a disciplinary proceeding means only the institution's final determination with respect to the alleged sex offense and any sanction that is imposed against the accused.

- Imposed sanctions ranging from a warning to permanent separation from the Law School following a final determination of an institutional disciplinary proceeding regarding rape, acquaintance rape, or other forcible or non-forcible sex offenses.

The University's Commitment

In cases of sexual assault, a victim may fear being blamed for the occurrence. He or she may also fear the thought of public scandal or casual dismissal of the complaint. This is not the case. Trinity's commitment is to

- Not prejudge or blame
- Meet privately with the victim, at a place of their choice, to take a complaint report
- Not release the victims name to the public or press
- Treat the victim with sensitivity, dignity, understanding, and professionalism
- Take the case seriously, regardless of your sex or the sex of the suspect
- Accommodate a request to speak with a female or male staff member
- Assist in arranging for hospital treatment or other medical needs and in contacting counseling and safety resources
- Investigate the case fully and help to achieve the best outcome, which may involve the arrest and prosecution of the suspect
- Keep the victim informed on the progress of the investigation or prosecution
- Assist the victim in changing their academic and living situation upon request, if the change is reasonably available
- Be available to answer questions, explain legal procedures, or just listen
- Pray for the victim and for a positive result to this difficult situation

Consent

Consent is an explicit, informed, voluntary, and mutually understandable communication to willingly participate in specific sexual activity without pressure, threats, coercion, force, or intimidation. Either person must also be able to withdraw consent and cease any sexual activity at any time. A current relationship, having previous sexual encounters, or silence from the individual may not be taken as an indication of consent. Similarly, a passive

response or sexual advances that are not resisted physically or verbally do not constitute consent. Someone who is not of legal age, has a mental disorder, or is physically or mentally incapacitated may not give consent. The use of alcohol or drugs may render an individual incapable of giving consent due to impaired judgment and the inability to make decisions or communicate intentions. Consent may not be given by someone who is unconscious or unaware, or for any reason is unable to communicate her/his intention.

State of California's definition of Consent is: 261.6. In prosecutions under Section 261, 262, 286, 288a, or 289, in which consent is at issue, "consent" shall be defined to mean positive cooperation in act or attitude pursuant to an exercise of free will. The person must act freely and voluntarily and have knowledge of the nature of the act or transaction involved.

A current or previous dating or marital relationship shall not be sufficient to constitute consent where consent is at issue in a prosecution under Section 261, 262, 286, 288a, or 289.

Sexual Harassment

The Trinity community will not tolerate any form of sexual harassment from its Faculty, Staff, Students or Visitors. Sexual harassment includes unwelcome sexual advances, requests for sexual favors, and other verbal, physical, electronic or digital conduct or communication of a sexual or gender-based nature, when submission to or rejection of the conduct explicitly or implicitly affects a person's employment or education, unreasonably interferes with a person's work or educational performance, or creates an intimidating, hostile or offensive working, learning, or living environment.

Title IX Coordinator

All educational institutions receiving Federal financial assistance must designate at least one employee to coordinate their efforts to comply with and carry out their responsibilities under Title IX of the Education Amendments of 1972, which prohibits sex discrimination in education programs and activities. Sexual misconduct against students, including sexual harassment, sexual assault, rape, and sexual exploitation, can be a form of sex discrimination under Title IX. The Title IX coordinator oversees Trinity's response to reports and complaints that involve possible sex discrimination to monitor outcomes, identify and address any patterns, and assess effects on the campus climate, so Trinity can address issues that affect

the wider school community. The Trinity California campus Title IX coordinator can be reached at 714-796-7167.

Registered Sex Offenders

Information concerning registered sex offenders living, working, or attending school in Orange County may be obtained from the Orange County Sheriff's Department at:

<http://www.meganslaw.ca.gov/disclaimer.aspx?lang=ENGLISH>

Security Awareness and Crime Prevention and Education

As required by the Clery Act, Trinity Law School conducts initial, ongoing and awareness programs for employees and the student body as highlighted below:

- 1. Sexual Harassment/ Sexual Violence**
- 2. Campus Security program**
- 3. Crime Prevention program**
- 4. Drug and Alcohol Abuse Prevention Program**
- 5. Fire Safety Education Program**

All the listed programs are presented to students and staff in their respective handbooks, orientation sessions, wall placards and by way of informational brochures on an annual basis. When a new employee is hired, Human Resources will provide and discuss the annual disclosure form detailing information as required by the Act. Just as employees are informed, students are reminded they must be responsible for their own security and the security of others. This is reinforced through the annual disclosure of crime statistics and in "timely warnings and emergency notifications" disseminated to the Campus Community when appropriate. These programs are identified by type and frequency in the appropriate policy and are evaluated bi-annually and updated as needed.

TLS is strongly committed to crime prevention, law enforcement and crime reporting. University campuses, like all other communities, are not immune to crime. Students, faculty and staff are urged to take advantage of safety programs offered by the City of Santa Ana, to take all reasonable precautions for their own safety and the prompt reporting of crimes.

Possession, Use and Sale of Alcoholic Beverage, Controlled Substances and Tobacco

All Trinity students are expected to maintain standards of conduct that exclude the possession, use and distribution of alcohol and non-prescription drugs on campus. TLS will fully support enforcement of local, state and federal law against those who willfully possess, use or distribute illicit drugs or alcohol on campus. Any student found to be using drugs or who is in a room where illicit drug use is occurring is subject to immediate dismissal. The university also reserves the right to require a student to submit to a full drug test if there is reasonable suspicion (as deemed by the dean of Trinity Law School) that the student may be involved in some form of substance abuse. Refusal, by the student, to submit to the test may result in dismissal from school. For further details on TIU's Drug and Alcohol Prevention Policy as well as health risks, counseling options and sanctions see Appendix "A".

Monitoring Off Campus Criminal Activity

Security Services monitors criminal activity occurring at off-campus locations with information provided by the Santa Ana Police Department and other pertinent Law Enforcement agencies. Should an incident occur off campus involving members of the TLS Community at a "School" sponsored event, the members of the community could face both external charges and judicial sanction(s) through the School's disciplinary system.

Preparation of the Annual Disclosure of Crime Statistics

Security Services takes several steps to ensure required statistics are compiled correctly. Statistic reports filed with Security Services are reviewed and verified. At the end of the year, the Director of Security Services sends a Crime Statistic Report Form to those deemed to be Campus Security Authorities requesting information on any crime that may have been reported to them during the previous calendar year. These statistics are then compiled. Any crimes that may have occurred within Trinity Law Schools Clery Geography are obtained from the Santa Ana Police

Departments web site. Finally, statistics are compiled and disclosed in the Annual Security report. In very limited circumstances Trinity may remove reports of crimes that have been “unfounded” and will disclose this in the annual security report in the number of “unfounded” crimes. This will only be done when the complainant voluntarily comes forward and withdraws the complaint in writing stating that the accusation was false. This will then be reviewed with local law enforcement, and after evaluation all the evidence involved, a final determination will be made whether to find the original criminal complaint “unfounded”.

Emergency Evacuation

The School requires complete evacuation of buildings to a prearranged outside assembly area during a fire alarm. Faculty, staff, and administration are informed twice a year of evacuation procedures.

Daily Crime Log

Security Services maintains a daily log which depicts all crimes reported to the department, except when disclosure of such information is prohibited by law or such disclosure would jeopardize the confidentiality of the victim. *(i.e., information may be withheld if release of such information would; (a) jeopardize an ongoing investigation or the safety of an individual; (b) cause a suspect to flee or evade detection; or (c) result in the destruction of evidence)*. Standard notations on the log include the nature, date, time and general location of each crime, and the disposition of the complaint, if known. For more information about the log contact The Operation Manager’s office at 714.796.7141 Monday-Friday between the hours of 9am-5pm.

Clery Report Geography Classifications

On Campus

Any building or property owned or controlled by an institution within the same reasonably contiguous geographic area and used by the institution in direct support of, or in a manner related to, the institution’s educational purposes, including residence halls.

Non Campus

Any building or property owned or controlled by a student organization that is officially recognized by the institution; or Any building or property owned or controlled by an institution that is used in direct support of, or in relation to, the institution's educational purposes, is frequently used by students, and is not within the same reasonably contiguous geographic area of the institution.

Public Property

All public property, including thoroughfares, streets, sidewalks, and parking facilities, that is within the campus, or immediately adjacent to and accessible from the campus, but are not deemed part of the campus

Crime Definitions

ARSON: Any willful or malicious burning or attempt to burn, with or without intent to defraud, a dwelling house, public building, motor vehicle or aircraft, personal property of another, etc.

CRIMINAL HOMICIDE -- Manslaughter by Negligence: The killing of another person through gross negligence.

CRIMINAL HOMICIDE -- Murder and Non-negligent Manslaughter: The willful (non-negligent) killing of one human being by another.

SEX OFFENSES -- FORCIBLE: Any sexual act directed against another person, forcibly and/or against that person's will; or not forcibly or against the persons will where the victim is incapable of giving consent.

SEX OFFENSES -- NON-FORCIBLE: Any unlawful, non-forcible sexual intercourse, such as incest or statutory rape.

ROBBERY: The taking or attempting to take anything from value of the care, custody or control of a person or persons by force or threat of force or violence and/or by putting the victim in fear.

AGGRAVATED ASSAULT: An unlawful attack by one person upon another for the purpose of inflicting severe or aggravated bodily injury. This type of assault usually is accompanied by the use of a weapon or by means likely to produce death or great bodily harm. It is not necessary that injury result from an aggravated assault when a gun, knife or other weapons is used which could or probably would result in a serious potential injury if the crime were successfully completed.

BURGLARY: The unlawful entry of a structure to commit a felony or a theft. For reporting purposes this definition includes: unlawful entry with attempt to commit a larceny or a felony; breaking and entering with intent to commit a larceny; housebreaking, safecracking; and all attempts to commit any of the aforementioned.

MOTOR VEHICLE THEFT: The theft or attempted theft of a motor vehicle. (Classify as motor vehicle theft all cases where persons not having lawful access take automobiles, even though the vehicles are later abandoned)

DOMESTIC VIOLENCE: is defined as a pattern of abusive behavior that is used by an intimate partner to gain or maintain power and control over the other intimate partner. Domestic violence can be physical, sexual, emotional, economic, or psychological actions or threats of actions that influence another person. This includes any behaviors that intimidate, manipulate, humiliate, isolate, frighten, terrorize, coerce, threaten, blame, hurt, injure, or wound someone.

DATING VIOLENCE: is defined as violence committed by a person who is or has been in a social relationship of a romantic or intimate nature with the victim; and where the existence of such a relationship shall be determined based on a consideration of the following factors:

- The length of the relationship
- The type of relationship
- The frequency of interaction between the persons involved in the relationship

STALKING: is defined as a pattern of repeated and unwanted attention, harassment, contact, or any other course of conduct directed at a specific person that would cause a reasonable person to feel fear.

WEAPON LAW VIOLATIONS: The violation of laws or ordinances dealing with weapon offenses, regulatory in nature, such as: manufacture, sale, or possession of deadly weapons; carrying deadly weapons, concealed or openly; furnishing deadly weapons to minors; aliens possessing deadly weapons; all attempts to commit any of the aforementioned.

DRUG ABUSE VIOLATIONS: Violations of state and local laws relating to the unlawful possession, sale, use, growing, manufacturing, and making of narcotic drugs. The relevant substances include: opium or cocaine and their derivatives (morphine, heroin, codeine); marijuana; synthetic narcotics (Demerol, methadone); and dangerous non-narcotic drugs (Barbiturates, Benzedrine).

LIQUOR LAW VIOLATIONS: The violation of laws or ordinance prohibiting: the manufacture, sale, transporting, furnishing, possessing of intoxicating liquor; maintaining unlawful drinking places; bootlegging; operating a still; furnishing liquor to minor or intemperate person, underage drinking, using vehicle for illegal transportation of liquor; drinking on a train or public conveyance, all attempts to commit any of the aforementioned. (Drunkenness and driving under the influence are not included in this definition.)

HATE CRIMES

Any of the above listed crimes, plus Larceny-Theft, Simple Assault, Intimidation, and Destruction/Damage/Vandalism of property in which the victim is intentionally selected based on actual or perceived race, gender, religion, sexual preference, ethnicity or disability of the victim that are reported shall be classified as hate crimes. These statistics will be classified in both the general statistics and in a special area covering hate crimes.

Crime Definitions from the Hate Crime Data Collection Guidelines and Training Manual from the FBI's UCR Program:

Larceny-Theft (Except Motor Vehicle Theft)

The unlawful taking, carrying, leading, or riding away of property from the possession or constructive possession of another. Attempted larcenies are included. Embezzlement, confidence games, forgery, worthless checks, etc., are excluded.

Simple Assault

An unlawful physical attack by one person upon another where neither the offender displays a weapon, nor the victim suffers obvious severe or aggravated bodily injury involving apparent broken bones, loss of teeth, possible internal injury, severe laceration, or loss of consciousness.

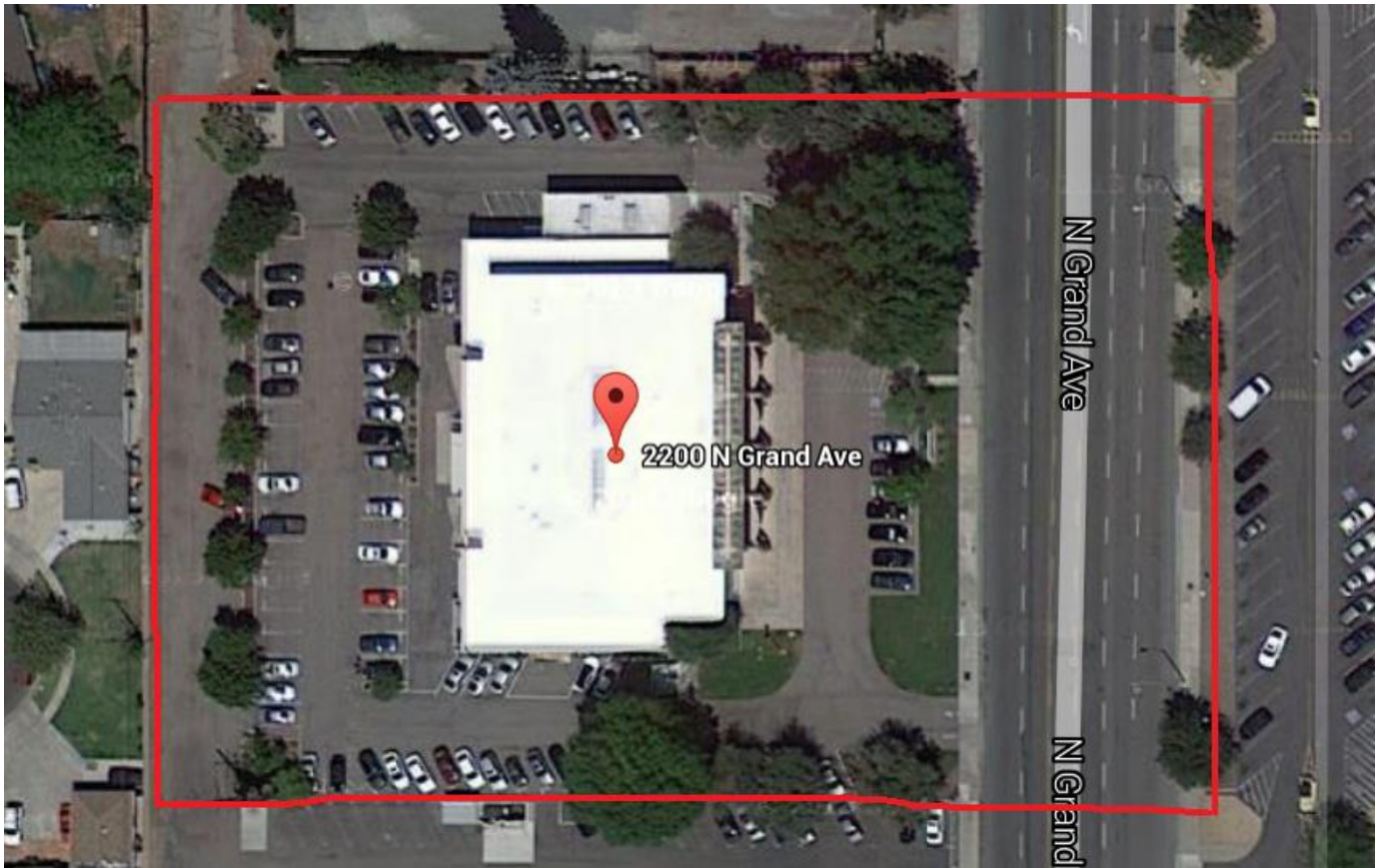
Intimidation

To unlawfully place another person in reasonable fear of bodily harm through the use of threatening words and/or other conduct, but without displaying a weapon or subjecting the victim to actual physical attack.

Destruction/Damage/Vandalism of Property

To willfully or maliciously destroy, damage, deface, or otherwise injure real or personal property without the consent of the owner or the person having custody or control of it.

Clery Geography



**Trinity International University
Clery Crime Statistics**

Trinity Law School On-Campus Building or Property

	2019		2020		2021	
Offense Type						
Murder	0		0		0	
Manslaughter	0		0		0	
Forcible Sex Offenses	0		0		0	
Non-Forcible Sex Offenses	0		0		0	
Robbery	0		0		0	
Aggravated Assault	0		0		0	
Burglary	0		0		0	
Arson	0		0		0	
Motor Vehicle Theft	0		0		0	
Domestic Violence			0		0	
Dating Violence			0		0	
Stalking			0		0	
Unfounded					0	

	2019		2020		2021	
Liquor Law Violations						
Arrest	0		0		0	
Referral	0		0		0	
Drug Law Violations						
Arrest	0		0		0	
Referral	0		0		0	
Weapons Law Violations						
Arrest	0		0		0	
Referral	0		0		0	

Hate Crimes-On Trinity Law School Campus	2019	2020	2021
Offense Type			
Murder	0	0	0
Manslaughter	0	0	0
Forcible Sex Offenses	0	0	0
Non-Forcible Sex Offenses	0	0	0
Robbery	0	0	0
Aggravated Assault	0	0	0
Burglary	0	0	0
Arson	0	0	0
Motor Vehicle Theft	0	0	0
Hate Crimes (by prejudice)	0	0	0
Race	0	0	0
Gender	0	0	0
Religion	0	0	0
National Origin		0	0
Gender Identity		0	0
Ethnicity	0	0	0
Disability	0	0	0
Larceny-Theft	0	0	0
Simple assault	0	0	0
Intimidation	0	0	0
Destruction/Damage/Vandalism of property	0	0	0

**Trinity International University
Clery Crime Statistics**

Trinity Law School Non-Campus Building or Property

	2019		2020		2021	
Offense Type						
Murder	0		0		0	
Manslaughter	0		0		0	
Forcible Sex Offenses	0		0		0	
Non-Forcible Sex Offenses	0		0		0	
Robbery	0		0		0	
Aggravated Assault	0		0		0	
Burglary	0		0		0	
Arson	0		0		0	
Motor Vehicle Theft	1		0		0	
Domestic Violence			0		0	
Dating Violence			0		0	
Stalking			0		0	
Unfounded					0	

	2019		2020		2021	
Liquor Law Violations						
Arrest	0		0		0	
Referral	0		0		0	
Drug Law Violations						
Arrest	1		0		0	
Referral	0		0		0	
Weapons Law Violations						
Arrest	0		0		0	
Referral	0		0		0	

Hate Crimes-Non Trinity Law School Campus	2019	2020	2021
Offense Type			
Murder	0	0	0
Manslaughter	0	0	0
Forcible Sex Offenses	0	0	0
Non-Forcible Sex Offenses	0	0	0
Robbery	0	0	0
Aggravated Assault	0	0	0
Burglary	0	0	0
Arson	0	0	0
Motor Vehicle Theft	0	0	0
Hate Crimes (by prejudice)	0	0	0
Race	0	0	0
Gender	0	0	0
Religion	0	0	0
National Origin		0	0
Gender Identity		0	0
Ethnicity	0	0	0
Disability	0	0	0
Larceny-Theft	0	0	0
Simple assault	0	0	0
Intimidation	0	0	0
Destruction/Damage/Vandalism of property	0	0	0

**Trinity International University
Clery Crime Statistics**

Trinity Law School Public Property

	2019		2020		2021	
Offense Type						
Murder	0		0		0	
Manslaughter	0		0		0	
Forcible Sex Offenses	0		0		0	
Non-Forcible Sex Offenses	0		0		0	
Robbery	0		0		0	
Aggravated Assault	0		0		0	
Burglary	0		0		0	
Arson	0		0		0	
Motor Vehicle Theft	0		0		0	
Domestic Violence			0		0	
Dating Violence			0		0	
Stalking			0		0	
Unfounded					0	

	2019		2020		2021	
Liquor Law Violations						
Arrest	0		0		0	
Referral	0		0		0	
Drug Law Violations						
Arrest	0		0		0	
Referral	0		0		0	
Weapons Law Violations						
Arrest	0		0		0	
Referral	0		0		0	

Hate Crimes-Trinity Law School Public Property	2019	2020	2021
Offense Type			
Murder	0	0	0
Manslaughter	0	0	0
Forcible Sex Offenses	0	0	0
Non-Forcible Sex Offenses	0	0	0
Robbery	0	0	0
Aggravated Assault	0	0	0
Burglary	0	0	0
Arson	0	0	0
Motor Vehicle Theft	0	0	0
Hate Crimes (by prejudice)	0	0	0
Race	0	0	0
Gender	0	0	0
Religion	0	0	0
National Origin		0	0
Gender Identity		0	0
Ethnicity	0	0	0
Disability	0	0	0
Larceny-Theft	0	0	0
Simple assault	0	0	0
Intimidation	0	0	0
Destruction/Damage/Vandalism of property	0	0	0

Appendix “A”

Drug and Alcohol Abuse Policy

In compliance with the requirements of the federal Drug-Free Workplace Act of 1988 and the federal Drug-Free Schools and Communities Act Amendments of 1989, the University is committed to providing students and employees with a drug-free environment for both work and study.

Prohibition: The University prohibits the unlawful possession, use or distribution of illicit drugs and alcohol by students and employees on its property or as part of any of its activities.

Legal Sanctions: Violations of this prohibition may be punishable under applicable local, state and federal laws.

University Sanctions: Violations of this prohibition will result in disciplinary action from the University. Sanctions may include educational intervention, mandated community service, suspension, expulsion, termination of employment and referral for prosecution.

Health Risks: Drug and alcohol use is an activity with inherent risk. Coordination, reaction time and judgment of the user have been proven to be affected by drug and alcohol usage, and this may pose a danger to the user and other members of the university community. There are known health risks resulting from the use of illicit drugs and/or alcohol. For example, the Surgeon General has warned that the consumption of alcohol during pregnancy may increase the risk of birth defects.

Prevention: For the stated reasons, all members of the University are encouraged to be actively involved in the prevention of alcohol and other drug abuse. Prevention and education programs are available, along with counseling and referrals to appropriate mental health and medical services. Initial consultations are available from the Counseling Center on campus. From there, referrals to appropriate treatment options may be made as circumstances require.

Review: The University will review the effectiveness and consistency of its programs through a Biennial Review.

