

TOSIBOX

Preparing your Key Quick Start Guide



Copyright © Tosibox Oy, 2022

1 Getting started

Remote management goes through configuring the TOSIBOX® Key, installing the companion software and making the first secure remote connection to your Node

First, install the TOSIBOX® Key client software.

The Key software can be installed from the flash drive of the TOSIBOX® Key device as follows:

Windows

1. Insert TOSIBOX® Key in the computer's USB port
2. Open the Key drive's folder (KEY-NNNN) and double-click Setup_Tosibox.exe. If your computer asks whether you want to allow Tosibox to make changes to your computer, click "yes" (requires Administrator rights).
3. The application will launch automatically after installation

Mac OS X

To install the application into computer's hard drive (recommended, starts faster):

1. Insert TOSIBOX® Key in the computer's USB port
2. Open Key flash drive (KEY-NNNN) in Finder
3. Drag "TosiboxClient" application into "Applications" folder
4. Run "TosiboxClient" from Applications folder

If your computer asks whether you want to allow Tosibox to make changes to your computer, click "yes".

Alternatively, the application can also be started directly from the Key flash drive.

2 Using TOSIBOX® Key

Install the Key into the USB port of your computer.

The TOSIBOX® Key software will launch. During the first launch you need to *review* and *agree* on the End-User License Agreement.

Next the Key software will ask for a password.

By entering a password, you can prevent the unauthorized use of the Key. Store the password safely. You can always change or disable it. If you ever forget the password you can restore it with the PUK code that comes in the Key sales package.

When the Key software launches it immediately starts accessing TOSIBOX back-end service to find out which Nodes the Key should have access to. If you have matched your Node and deployed it on the Internet as explained in the Node quick start guide, it will become available in the Key user interface as soon as the Node is authenticated.

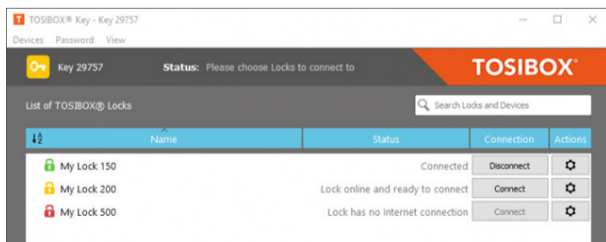
3 Ready to Connect

Now that the TOSIBOX® Node and the TOSIBOX® Key have been matched and both are deployed on the Internet, you are ready to connect. Open your TOSIBOX® Key Client and make sure your Node is available (is connected).

When you click the Connect button, TOSIBOX® Key Client starts building VPN connection to the Node. You can follow the connection procedure as the status message changes along the way.

- Connecting... - Key is locating the Node on the Internet
- Closing ... - Key did not find the optimal way but is trying another method (optional)
- Authenticating... - Key is exchanging public certificates
- Assigning IP Address ... - Key is configuring the workstation connection settings
- Verifying connection ... - Key is making sure the connection is up

Once the connection is built successfully the Node and Key icons turn green and the status message indicates connection type.



- Connected - Key is connected to the Node over the Internet
- Connected locally - Key is connected to the Node on the same local network, connection is not routed over the Internet

Note that even if the connection is routed over the Internet it *never* passes through Tosibox owned or other 3rd party systems where the connection would be decrypted. The connection is always secured end-to-end.

For more information and FAQ's, visit www.tosibox.com/support