

! BEFORE OPERATING

The Operation & Maintenance Manual, Operator's Handbook and machine signs (decals) provide proper operation and maintenance instructions. Failure to obey warnings and instructions can cause serious injury or death.



The service schedule chart on the machine provides service and maintenance instructions. Lubricate, grease and check fluid levels on the excavator as required. Check for leaks and broken or damaged parts before operating.

Never smoke when fueling!

Know the location and function of all safety features, interlocks, gauges and operating controls.

Activate the auxiliary hydraulics mode switch for hydraulic attachment operation.



Always fasten the seat belt snugly.

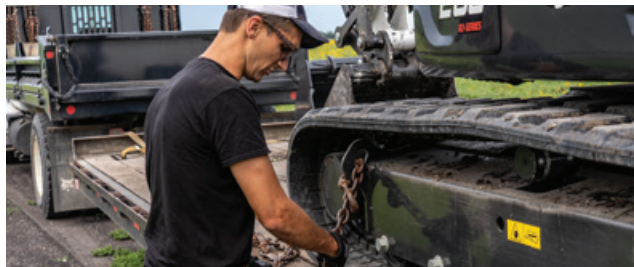
! Wear proper clothing and use personal protective equipment as required for the job.

! SERVICING

Maintenance procedures that are not in the Operation & Maintenance Manual must be performed only by qualified service personnel.



! TRANSPORTING THE MACHINE AND ATTACHMENT



Always drive up the ramp with the heavy end uphill.

Engage the slew lock and secure the excavator and attachments to the tie-down points using chains and binders (see Operation & Maintenance Manual for more details). Use a towing vehicle and trailer of adequate capacity.

! OPTIONS AND ACCESSORIES

Additional machine options and accessories are available (lift kits, enclosures, fire extinguisher, front guard, etc.).



One Tough Animal

Bobcat Company • 250 East Beaton Drive • West Fargo, ND 58078

Bobcat®, the Bobcat logo and the colors of the Bobcat machine are registered trademarks of Bobcat Company in the United States and various other countries.
©2025 Bobcat Company. All rights reserved.

B-1699 (04/25)
EP-2M-0425-19079-F

Printed in U.S.A.



RENT IT

SAFELY !



SAFETY RULES FOR BOBCAT COMPACT EXCAVATORS

Know the equipment and the worksite before you operate.

Remember: Safe operation begins with the operator.

Scan the code to watch the compact excavator safety video.



RENT IT SAFELY

! KNOWING THE WORKSITE

Obey applicable laws and regulations. Call local utilities before you dig: 811 or 1-888-258-0808.

- Know the location of underground utility lines.
- Inspect the work area for holes, drop-offs or unstable ground.
- Know the weight limitations of operating surfaces and clearances.



Know what's below.
Call before you dig.

! CHANGING AND USING ATTACHMENTS



- Make sure the attachment is securely fastened to the excavator. Check that the X-Change™ system (if equipped) is securely engaged.
- The Operation & Maintenance Manual, attachment signs (decals), and Operator's Handbook provide operating and maintenance instructions. **Failure to obey warnings and instructions can cause serious injury or death.**
- Use only approved attachments for the compact excavator.



! LEAVING THE MACHINE

Before leaving the operator's position:

- 1 Lower the attachment to the ground.
- 2 Shut down the machine.
- 3 Remove the key (if equipped) to prevent unauthorized starting.
- 4 Raise the control console.



- Use grab-handles, tracks and skid-resistant surfaces when entering or exiting the excavator.
- Do not jump off the machine.

! WHILE OPERATING

- Turn the machine on with the steering levers and controls in NEUTRAL. Keep bystanders away.
- Move steering levers and pedals smoothly. The excavator will move in the direction of the blade when the steering levers are moved away from the operator.
- Keep your attachment low when traveling.
- Never carry riders.
- Do not exceed the rated lift capacity. Read and understand the lift capacity chart on the excavator.



! Keep bystanders away from the excavator and work area. Never lift the boom or an attachment over another person.



- Always look in the direction of travel before moving the excavator or rotating the house swing (slew).
- Do not swing loads on a slope. Swing loads low and slowly.
- Do not travel across or up slopes that are over 15 degrees.
- Do not travel down or back up on slopes that exceed 25 degrees.

! Keep hands and feet inside the operator's area. Never lean out of the cab with the machine on.

- Never operate the excavator's controls from the ground.
- Only activate the controls from the operator's position.



TRAIN NOW

Operator training and safety resources, including a safety video for compact excavators, are available in English and Spanish at Bobcat.com/training

