



**2022**

# BOBCATALOG



EXCAVATORS  
LOADERS  
TRACTORS  
MOWERS

TOOLCAT UTILITY  
WORK MACHINES  
UTILITY VEHICLES  
TELEHANDLERS  
MUCH, MUCH MORE

**POWERFUL  
SOLUTIONS  
FOR YOUR MOST  
DIFFICULT JOBS**



# CONTENTS

<b>BOBCAT EQUIPMENT LINEUP</b>	<b>4</b>
<b>COMPACT EXCAVATORS</b>	<b>6</b>
<b>LARGE EXCAVATORS</b>	<b>20</b>
<b>COMPACT LOADERS</b>	<b>24</b>
<b>MINI TRACK LOADERS</b>	<b>49</b>
<b>SMALL ARTICULATED LOADERS</b>	<b>52</b>
<b>COMPACT WHEEL LOADERS</b>	<b>56</b>
<b>COMPACT TRACTORS</b>	<b>60</b>
<b>ZERO-TURN MOWERS</b>	<b>72</b>
<b>TOOLCAT UTILITY WORK MACHINES</b>	<b>78</b>
<b>TELEHANDLERS</b>	<b>81</b>
<b>UTILITY VEHICLES</b>	<b>84</b>
<b>PARTS AND SERVICE</b>	<b>86</b>







**UNDER ALL THESE LAYERS  
OF DIRT, MUD AND SOMETIMES CRUD  
IS A HEART THAT PUMPS  
A BOLDER SHADE OF ORANGE BLOOD.  
WE ARE BOBCAT.**







**SKID-STEER LOADERS**



**COMPACT TRACK LOADERS**



**MINI TRACK LOADERS**



**SMALL ARTICULATED LOADERS**



**TOOLCAT™ UTILITY WORK MACHINES**



**COMPACT WHEEL LOADERS**



**ZERO-TURN MOWERS**



**TELEHANDLERS**





**COMPACT  
EXCAVATORS**



**LARGE EXCAVATORS**

# THE ONLY THING MISSING FROM THIS LINEUP IS **YOU IN THE SEAT.**

If you have the will to take on a battle, we have the way to help you come out on top. Get to know the latest lineup of Bobcat® equipment built to handle whatever your days dish out.



**COMPACT TRACTORS**



**UTILITY VEHICLES**





COMPACT EXCAVATORS

ANSWER THE WORK DEMANDS OF TODAY – AND TOMORROW –  
**WITH COMPACT EXCAVATORS.**





# YOUR NEXT JOB CALLS FOR NEXT-LEVEL PERFORMANCE WITH R2-SERIES COMPACT EXCAVATORS.

Work is tougher. Deadlines are shorter. And R2-Series compact excavators are designed to help you take on bigger, more challenging jobs with confidence. These powerful, comfortable and versatile machines supply a long list of hard-working innovations that maximize your productivity.

You'll have more precise control for managing the most complex tasks. You'll stay more focused with instrumentation and cab features that make long days more comfortable.

You'll spend less time servicing your machine and more time knocking out the work. And, of course, you'll get the powerful digging and lifting performance you need for even bigger excavator jobs.

Unfortunately, your jobs don't get smaller, easier or less punishing over time, but your excavator is better than ever before. Take it on in an R2-Series excavator and take your performance to the next level.

## YOUR WORK IS TOUGHER. DEADLINES ARE SHORTER. THIS IS HOW YOU KEEP UP.

**E32** R2-SERIES COMPACT EXCAVATOR



**E35** R2-SERIES COMPACT EXCAVATOR



**E42** R2-SERIES COMPACT EXCAVATOR



**E50** R2-SERIES COMPACT EXCAVATOR



**E60** R2-SERIES COMPACT EXCAVATOR



**E88** R2-SERIES COMPACT EXCAVATOR





## COMPACT EXCAVATORS FEATURES AND BENEFITS



# BE MORE PRECISE. BE MORE PRODUCTIVE.

GET THE MOST ADVANCED PERFORMANCE IN THE INDUSTRY WHEN YOU CHOOSE **R2-SERIES EXCAVATORS.**

### BOBCAT ENGINE

A majority of the R2-Series lineup features an efficient, powerful Bobcat® engine that delivers high performance while reducing and simplifying routine maintenance. Dependable cold-weather operation makes winter work easier, and a variety of features makes maintenance and service more convenient.

### SMOOTH OPERATION

The hydraulic control valve offers smooth and refined metering, giving you fast cycle times with fine movement and controllability for level grading.

### COOLING SYSTEM

The cooling system in R2-Series excavators offers side-by-side heat exchangers that efficiently control engine compartment temperature for optimal performance and engine component life.







## **ALL BOBCAT EXCAVATORS GIVE THESE PERFORMANCE ADVANTAGES.**

### **ADVANCED EXCAVATOR HYDRAULICS**

Bobcat designs its hydraulic system to deliver the most hydraulic horsepower, helping excavators travel faster, dig stronger, provide faster cycle times and backfill with power.

### **MORE POWER**

High-efficiency piston pumps match force to demand, delivering more usable power for digging in challenging ground conditions.

### **SIMPLE, STATE-OF-THE-ART, NON-DPF DIESEL ENGINE**

The Bobcat engine found in most Bobcat compact excavators has an ultra-low particulate combustion (ULPC) design that drastically reduces particulate matter without the need for a DPF.



### **INCREASED OVER-THE-SIDE LIFT CAPACITY**

An integrated counterweight and dual-flange track rollers that extend the undercarriage structure closer to the track's edge result in an increase in over-the-side lift capacity. This also improves over-the-side digging performance and slewing ability. Dual-flange rollers are available on all R2-Series models.

*See model specifications for feature availability.*



## COMPACT EXCAVATORS COMFORT FEATURES



### ALL BOBCAT EXCAVATORS GIVE YOU LEADING COMFORT FEATURES.

#### GREAT RIDE QUALITY. MINIMAL VIBRATION.

Experience a ride quality that's smoother, more stable and more comfortable than you'd ever expect from a compact excavator. Body panels and robust hinges and latches reduce vibration in the cab.

#### OPTIONAL HIGH-BACK HEATED SEAT WITH HEADREST

No matter your height or weight, it's easy to find the right operating position in the optional high-back seat. With the higher back and headrest, you get more support for long hours of operation. The convenient heat feature complements the optional automatic heat and air conditioning, keeping your body warm on frigid days. Available on select models.



# RIDE OUT YOUR TOUGHEST JOBS IN COMFORT.



#### LOW-EFFORT JOYSTICKS

Equipped with fingertip boom swing and auxiliary control, Bobcat joysticks provide quick, precise movement with low effort and less fatigue over long hours of operation. Added buttons put more control at your fingertips. On the right-hand joystick, operators can control the optional rearview camera or re-bench the depth check system. The left-hand joystick includes a button to switch from boom swing function to secondary auxiliary hydraulics.



**EXPERIENCE THE MOST UP-TO-DATE COMFORT  
IN R2-SERIES EXCAVATORS.**



**OPTIONAL REAR CAMERA**

The optional rear camera offers a continuous rear view from the seat when desired. It helps you identify obstacles that, if not avoided, could damage the excavator and its components. The camera is mounted high and out of the way to prevent contact with obstacles and debris.



**OPTIONAL TOUCH DISPLAY**

Receive detailed machine information and experience unprecedented device connectivity. The optional 7-inch display with easy-to-use touchscreen is waterproof and hardened to reduce scratching. It also offers Bluetooth® technology for hands-free phone calls when needed. View and toggle through detailed machine performance information via the sharp, vivid touchscreen display, and make operation efficient, productive and profitable. Available on R2-Series excavators.



**EXCELLENT VISIBILITY**

Narrow cab pillars and ample glass surface area give you the industry's best visibility to your work group and blade.

**COMFORT CAB**

Work all day in the Bobcat comfort cab. Enjoy the most cab space and entry/exit room in the industry, plus a large adjustable suspension seat, adjustable armrests and more.





# GET INTO YOUR WORK... AND STAY OUT OF THE SHOP.

**R2-SERIES:**

**STRONGER BLADE**

Standard on R2-Series excavators, the top edge of the blade has a more durable design that is more robust against impact.



**ALL BOBCAT EXCAVATORS:**

**EXCLUSIVE**

**IN-TRACK SWING FRAME**

Swing castings and cylinders stay within the tracks when offset digging, allowing you to dig flush against an obstacle and get closer to your work.

**X-FRAME UNDERCARRIAGE**

Dirt and other materials easily pass through, reducing debris buildup and cleanup time. Drive motors are located within the width of the tracks to protect key components.

**ROBUST WORK GROUP**

Durable design, including cast pivot joints for precise pin alignment, provides longer structural life and improves lifting performance.





## SERVICEABILITY

**NO MATTER WHICH BOBCAT EXCAVATOR YOU CHOOSE, YOU'LL ENJOY LEADING SERVICEABILITY.**

### PANORAMIC SERVICEABILITY

It's easy to find and reach your engine checkpoints so daily maintenance gets done. The rear and side access doors put the engine and pump package, valve bank, cooling system and plumbing within easy reach.

### GREASELESS BOOM SWING CYLINDER PIN

The greaseless pin joint eliminates an important greasing item from your daily checklist, saving you maintenance time and increasing your work time. Available on select models.

## VERSATILITY



**R2-SERIES EXCAVATORS MAKE YOU MORE VERSATILE ON THE JOB.**

### OPTIONAL CLAMP DIVERTER VALVE

With the optional clamp diverter valve, you can get increased hydraulic clamp flexibility and improved ability to run other attachments – without disconnecting the clamp.

### ARM-MOUNTED AUXILIARY HYDRAULICS

Auxiliary hydraulics are easier to reach and attach, thanks to their convenient location on the excavator arm.

### INTEGRATED LIFT EYE

The lift eye, standard on R2-Series excavators, gives you a convenient method for handling objects or moving them in and out of the trench.



# **EXCLUSIVE DEPTH CHECK SYSTEM**

Now you can achieve an accurate grade every time without leaving your cab to manually check the grade or depth with a grade stick or tape measure. The depth check system from Bobcat helps prevent under-digging or over-digging with sensors that allow you to set a desired depth.





**EXCLUSIVE**

**HYDRAULIC X-CHANGE ATTACHMENT MOUNTING SYSTEM**

For the most convenient attachment changes in the industry, choose the optional Hydraulic X-Change™ system. Release and secure attachments from inside the cab with the flip of a switch.

**HYDRAULIC PIN-GRABBER ATTACHMENT QUICK COUPLER**

This optional attachment mounting system for the R2-Series E88 provides the ability to change buckets without leaving the seat.

**SELECTABLE AUXILIARY HYDRAULIC FLOW**

A minimum of three flow rates on most Bobcat models helps you optimize the response of select Bobcat hydraulic attachments. R2-Series excavators offer even more customization with up to 10 flow rates.

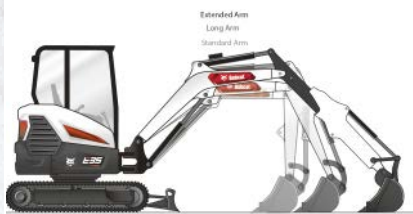


**DO MORE THAN DIG.**

Take on new jobs and get more use from your machine with more than a dozen attachments. See pages 17-19 for available compact excavator attachments.

**FIND THE RIGHT MACHINE FOR YOUR WORK. MORE OPTIONS MAKE IT EASY.**

**ARM CONFIGURATIONS**



1 2 3

Choose the arm configuration that best meets your need for reach, depth, power and lifting performance.

- 1 STANDARD ARM
- 2 LONG-ARM OPTION
- 3 EXTENDABLE-ARM OPTION

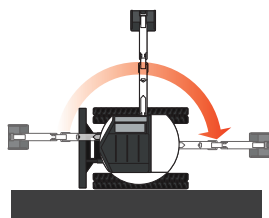
**EXCLUSIVE**

**CLAMP-COMPATIBLE EXTENDABLE ARM**

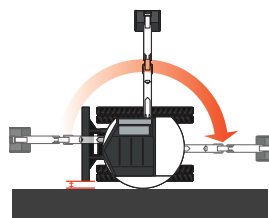
Dig deeper, reach farther and minimize repositioning with the only clamp-compatible extendable-arm option on the market.

**TAIL SWING TYPES**

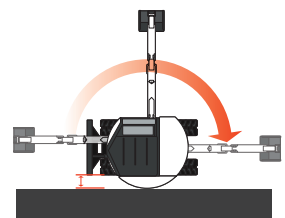
Choose an excavator model with a tail swing configuration that best fits your maneuverability requirements.



ZERO TAIL SWING



MINIMAL TAIL SWING



CONVENTIONAL TAIL SWING



# COMPACT EXCAVATORS SPECIFICATIONS



	HORSEPOWER	OPERATING WEIGHT	BUCKET DIGGING FORCE	MAX. DIG DEPTH	MAX. REACH AT GROUND LEVEL	WIDTH	TAIL SWING TYPE
<b>12,000-19,000 LB.</b>							
<b>E88</b> R2-Series	65.4 hp (48.7 kW)	19,600 lb. (8891 kg)	15,130 lbf. (67,300 N)	182.0 in. (4622 mm)	282.5 in. (7176 mm)	86.6 in. (2200 mm)	Conventional
<b>E60</b> R2-Series	55.7 hp (41.6 kW)	12,315 lb. (5586 kg)	10,261 lbf. (45,642 N)	156.7 in. (3981 mm)	246.3 in. (6256 mm)	77.2 in. (1960 mm)	Conventional
<b>6,500-12,000 LB.</b>							
<b>E50</b> R2-Series	49.7 hp (36.5 kW)	11,357 lb. (5151 kg)	9511 lbf. (42,307 N)	136.9 in. (3478 mm)	231.9 in. (5889 mm)	77.2 in. (1960 mm)	Minimal
<b>E42</b> R2-Series	42.6 hp (31.4 kW)	9830 lb. (4459 kg)	9601 lbf. (42,707 N)	124.5 in. (3163 mm)	207.1 in. (5261 mm)	72.8 in. (1850 mm)	Conventional
<b>E35</b> R2-Series	33.2 hp (24.7 kW)	7893 lb. (3580 kg)	7284 lbf. (32,402 N)	121.2 in. (3077 mm)	204.3 in. (5190 mm)	69.7 in. (1769 mm)	Zero
<b>E35</b> R2-Series	24.8 hp (18.5 kW)	7659 lb. (3474 kg)	7284 lbf. (32,402 N)	121.2 in. (3077 mm)	204.3 in. (5190 mm)	69.7 in. (1769 mm)	Zero
<b>E32</b> R2-Series	24.8 hp (18.5 kW)	7403 lb. (3358 kg)	7284 lbf. (32,402 N)	121.2 in. (3077 mm)	194.5 in. (4940 mm)	61.8 in. (1569 mm)	Conventional
<b>2,500-6,500 LB.</b>							
<b>E26</b> R-Series	24.8 hp (18.5 kW)	6489 lb. (2942 kg)	5652 lbf. (25,140 N)	114.4 in. (2906 mm)	191.9 in. (4876 mm)	61.0 in. (1550 mm)	Minimal
<b>E20</b> R-Series Retractable undercarriage	13.9 hp (10.4 kW)	4306 lb. (1953 kg)	4684 lbf. (20,835 N)	101.0 in. (2565 mm)	167.9 in. (4264 mm)	38.6-53.5 in. (980-1360 mm)	Zero
<b>E10</b> R-Series Retractable undercarriage	10.2 hp (7.6 kW)	2593 lb. (1176 kg)	1865 lbf. (8294 N)	71.7 in. (1820 mm)	121.8 in. (3093 mm)	28.0-43.0 in. (710-1100 mm)	Zero

All specifications are shown with standard arm.

Contact your dealer or visit [Bobcat.com](http://Bobcat.com) to request a price quote today.



# DO MORE THAN DIG.

Pair your compact excavator with these hard-working attachments.



## AUGER

**Dig deeper and faster, even in hard, rocky soil.**

- Knuckle-joint design digs vertical holes on uneven terrain.
- 6- to 48-inch diameter bits available.
- 58- to 72-inch digging depth without extension.
- Five models available, including direct-drive and planetary-drive augers.

**APPROVED MACHINES:** SSL, CTL, MX, MTL, SAL, TC, TL



## BREAKER, HYDRAULIC

**Break concrete faster. Cut through rocks easier.**

- Matches hydraulic capacity of the carrier to the breaker for consistent machine-to-breaker performance.
- Quieter, smoother operation while maintaining blows per minute.
- Automatically regulates pressure regardless of changes in outdoor temperature.
- Seven models available from 60 ft.-lb. to 1,000 ft.-lb. impact energy class.

**APPROVED MACHINES:** SSL, CTL, MX, MTL, SAL



## BREAKER, NITROGEN

**Smash that deadline. Protect that uptime.**

- Offers a long piston stroke to maximize impact energy and reduce recoil.
- Unique valve design reduces pressure fluctuations and strain on carrier hydraulic pumps.
- Only two moving parts, and all grease points are within easy reach.
- Six models available from 150 ft.-lb. to 1,500 ft.-lb. impact energy class.

**APPROVED MACHINES:** SSL, CTL, MX, MTL, SAL



## BUCKET, GRADING

**Backfill, clean ditches and complete finish grading.**

- Features replaceable and reversible cutting edge, increased capacity and no center gusset.
- 31-, 36-, 39-, 48- and 60-inch widths.
- From Class 0 through Class 6 (E10 – E88).
- Pair with Hydra-Tilt™ or PowerTilt® swing accessories.

**APPROVED MACHINES:** MX



## GRADING BLADE

**Expertly grade no matter the terrain.**

- Pair with Hydra-Tilt or PowerTilt swing accessories.
- Excellent for backfilling trenches and leveling terrain.
- Grade a wide variety of landscapes.
- Shape drainage swales to minimize runoff or capture stormwater.

**APPROVED MACHINES:** MX



## BUCKET, TRENCHING

**Dig trenches for water, power and telecommunications projects.**

- Cast side cutter provides enhanced durability and functionality.
- Weld-on shanks offer strength and durability.
- X-Change™ reinforcement plate (18-inch bucket and up) for severe digging.
- Class 0 to Class VI.

**APPROVED MACHINES:** MX

*NOTE: Not all attachments are approved for all compact excavator models.*

**APPROVED MACHINES** | **CTL** Compact Track Loader **CT** Compact Tractor **MX** Compact Excavator **MTL** Mini Track Loader  
**SAL** Small Articulated Loader **SSL** Skid-Steer Loader **TC** Toolcat™ Utility Work Machine **TL** Telehandler



# COMPACT EXCAVATORS ATTACHMENTS



## CLAMP

**Grab, lift, move and place materials.**

- Easily maneuver in tight spaces to selectively grab objects.
- Pair with a trenching bucket or three-tine grapple to move oddly shaped objects.
- 5.5-, 13-, 14.4-, 15- and 16.6-inch widths.
- Five models available within Classes I, III, IV and VI.

**APPROVED MACHINES:** MX



## DEPTH CHECK ACCESSORY KIT

**Eliminate the chance of over- and under-digging.**

- Grade accuracy of  $\pm 0.5$  inches.
- Integrated system; no second screen or panel to install.
- Fully wired for simplicity and accuracy.
- Includes position sensors for the boom, arm and bucket.

**APPROVED MACHINES:** MX



## FLAIL MOWER

**Cut down brush, grass, small trees and more.**

- Triple-knife flails rip through hard and soft wood.
- Includes safety chains to help contain debris.
- Direct-drive hydraulic motor expertly balances torque and rpm.
- Three models available for cab-equipped excavators only.

**APPROVED MACHINES:** MX (E32 – E88)



## HYDRA-TILT SWING ACCESSORY

**Save time on grading with added accessory efficiency.**

- Wrist-like motion improves maneuverability.
- Includes 60 degrees of tilting motion.
- Save time with reduced repositioning.

**APPROVED MACHINES:** MX



## PACKER WHEEL

**Compact trenches with power and efficiency.**

- Double wheel assembly with 30-inch wheel diameter.
- Operate without the need for auxiliary hydraulics.
- Eliminates work originally done by hand.
- Compact design increases versatility.

**APPROVED MACHINES:** SSL, CTL, MX



## PLATE COMPACTOR

**Compact trenches without leaving the cab.**

- Eliminates the need for a worker in the trench.
- Easily pack material in hard-to-reach areas.
- Shock mounts distribute vibrations for level and efficient compacting.
- 3,400- and 6,400-pound dynamic force.

**APPROVED MACHINES:** MX





## GRAPPLE, THREE-TINE

Grab, pick and place large, difficult-to-manage materials.

- 200- and 225-pound operating weight.
- 27- and 33-inch tine radius.
- 20.5-inch grapple width.
- Two models available, Class III and Class IV.

APPROVED MACHINES: MX



## POWERTILT SWING ACCESSORY

Expertly dig under and around objects.

- Includes 90 degrees of tilting motion.
- 178- and 180-degree side-to-side rotation.

*PowerTilt® is a registered trademark of the Helac Corporation.*

APPROVED MACHINES: MX



## RIPPER

Effortlessly tear through soil and frozen ground.

- Gussets provide substantial ripping power.
- Heavy-duty shank reinforces structure for maximum durability.
- 270- and 255-pound operating weight when cutting through frost and rock.

APPROVED MACHINES: MX



## PRO CLAMP SYSTEM

Grab larger objects with a wider, more aggressive bite.

- Available with material clamp and grading tool capabilities.
- Pin grading tool in forward position to access expert grading function.
- 13.4- and 15.9-inch-wide material handler teeth.
- 24.25-inch-wide grading tool cutting edge.

APPROVED MACHINES: MX



## TRENCHER

Create trenches fast – even in hard and rocky soil.

- Teeth and chain options add versatility and maximize trenching capabilities.
- Available in 4- to 12-inch trenching widths.
- Efficiently adjust chain tension with grease cylinder tensioning.
- Standard crumbler clears soil for a clean, smooth trench bottom.

APPROVED MACHINES: MX



## WATER KIT

Control dust, dirt and debris levels.

- First water kit solution for the compact excavator line.
- Keeps dust, dirt and debris under control.
- High-capacity water tanks for extended use.
- Control usage with a convenient on/off switch located in the cab.

APPROVED MACHINES: SSL, CTL, MX, SAL, MTL, TC, TL

NOTE: Not all attachments are approved for all compact excavator models.

APPROVED MACHINES | CTL Compact Track Loader CT Compact Tractor MX Compact Excavator MTL Mini Track Loader  
SAL Small Articulated Loader SSL Skid-Steer Loader TC Toolcat Utility Work Machine TL Telehandler





LARGE EXCAVATORS

# SOMETIMES YOU NEED TO GO BIG.



**E165** LARGE EXCAVATOR



# GET THE SIZE, POWER AND REACH YOU NEED TO TACKLE YOUR TOUGHEST JOBS.

Your challenges aren't getting smaller. Sometimes you need to go bigger. Bobcat® large excavators deliver the impressive lift capacities and reach needed for your most difficult jobs – while retaining great maneuverability.



**E145** LARGE EXCAVATOR



# BIG CHALLENGES CALL FOR BIG SOLUTIONS.



## PERFORMANCE

### ARM AND BUCKET FORCE

Class-leading hydraulics provide reliable, steady power to the work group, saving time with every digging cycle.

### IMPRESSIVE LIFTING CAPACITY

The combination of size and hydraulic power enables you to lift more with greater confidence – so you can pick and place items with ease.

### FOUR POWER MODES

Four selectable power modes give you adaptable performance to tackle the job as you see fit. Choose from Power+, Power, Standard Power or Economy modes. For a quick boost of power, the One-Touch Power Boost button increases hydraulic power, allowing you to break through hard ground.

### REDUCED TAIL SWING (E145)

Reduced tail swing allows for enhanced maneuverability in tight jobsites, so you can confidently use the machine around obstacles or against walls.

### CONVENTIONAL TAIL SWING (E165)

For tough work that requires the best possible lift capacity, the conventional tail swing gives you the strength you need.

### SMART POWER CONTROL

While in digging work mode, Smart Power Control matches load to engine rpm, hydraulic pump torque and engine response, improving efficiency in any of the four power modes. Operators can activate it and turn it off whenever necessary.



## COMFORT

### QUIET, COMFORTABLE CAB

The pressurized cab features a seamless sound-isolating seal to keep sound levels extremely low inside the operator station. The cabin is isolated from the frame to reduce noise.

### HEATED AIR-SUSPENSION SEAT

Enjoy a wide range of adjustment points to find optimal comfort, including seat height, seat cushion angle, back recline and more.

### STANDARD REARVIEW AND SIDEVIEW CAMERAS

Watch your surroundings and gain greater peace of mind via the convenient rearview and sideview cameras.

## UPTIME

### RECESSED DRIVE MOTORS

The recessed drive motors of the upper structure frame add strength to better withstand side impacts and protect machine components.

### HEAVY-DUTY WEAR PLATES

Hard, wear-resistant wear plates at the attachment connecting pins eliminate side play for extended service intervals on your bucket pin-up points.

### SEALED, LUBRICATED TRACK PINS

The sealed, lubricated track pins maintain constant tension on the engine accessory belt, compensating for regular wear and maintaining the performance you demand.



# LARGE EXCAVATORS SPECIFICATIONS



	HORSEPOWER	OPERATING WEIGHT	BUCKET DIGGING FORCE	MAX. REACH AT GROUND LEVEL	WIDTH	TAIL SWING TYPE
<b>E165</b>	131.0 hp (97.9 kW)	38,376 lb. (17,407 kg)	25,794 lbf. (114,737 N)	346.0 in. (8790 mm)	102.0 in. (2590 mm)	Conventional
<b>E145</b>	115.0 hp (85.9 kW)	34,987 lb. (15,870 kg)	21,471 lbf. (95,508 N)	333.0 in. (8530 mm)	102.0 in. (2590 mm)	Reduced

Contact your dealer or visit [Bobcat.com](http://Bobcat.com) to request a price quote today.

# LARGE EXCAVATORS ATTACHMENTS



## HEAVY-DUTY TRENCHING BUCKET

The heavy-duty trenching bucket makes light work of even the heaviest digging and includes two triangular wear shrouds.

- E145 available sizes: 24-inch, 36-inch, 42-inch
- E165 available sizes: 36-inch, 42-inch, 48-inch



## HT THUMB (MAIN PIN)

HT thumbs utilize a hydraulic cylinder to give you up to 137-degree rotation while at work.

Buckets are engineered specifically to mesh with the teeth, and the thumbs are excellent for the biggest demolition and land-clearing jobs. Compatible with 36-inch and 42-inch buckets only.



## HYDRAULIC QUICK COUPLER

Switching out attachments is simple with the hydraulic quick coupler. It uses a pin grabber style and will only release in a curled position to ensure safe and secure coupling.

Change attachments from the security of the large excavator cab. Plus, there are no grease points, so maintenance is kept at a minimum.



## HEAVY-DUTY GRADING BUCKET

The versatile heavy-duty grading bucket delivers added capacity when working to move material on a jobsite or to easily finish, grade, backfill or clean ditches.

This attachment can be pinned on, quick coupled or utilized with a thumb. We offer 60-inch grading buckets for both the E145 and E165.



## PL THUMB (PRO-LINK)

Progressive link thumbs provide unmatched versatility where you need it most.

Providing up to 180-degree rotation, the thumbs follow the bucket through your entire work cycle, improving pick-up and placement of material close to the large excavator. Compatible with 36-inch and 42-inch buckets only.





COMPACT LOADERS

# A REVOLUTIONARY RESPONSE TO YOUR MOST DEMANDING WORK







Today's work requires you to push the limits of productivity. You have to lift more, dig deeper, work faster and move from task to task without missing a beat.

## R-SERIES LOADERS OFFER REVOLUTIONARY PERFORMANCE SO YOU CAN **ACCOMPLISH MORE.**

**S76** SKID-STEER LOADER

**T76** COMPACT TRACK LOADER





## COMPACT LOADERS FEATURES AND BENEFITS

# LIFT MORE. RUN HARDER. DO MORE IN LESS TIME.

### CONQUER TOUGHER JOBS WITH THESE **R-SERIES** ENHANCEMENTS.

#### Increased Lifting Capabilities

Cast-steel lift arm sections increase strength and optimized geometry improves lift capacity – even at full reach.

#### Increased Lift Height

Get more capability for dumping into high-sided dump trucks and hoppers.

#### Inline Engine

A Bobcat® engine with a durable direct-drive system provides more usable horsepower and torque for pushing, digging, lifting and attachment operation.

### DISCOVER MORE PERFORMANCE ADVANTAGES ACROSS THE **BOBCAT** COMPACT LOADER LINEUP.\*

#### Powerful Hydraulics

The loader engine, pumps and hydraulic system deliver maximum performance for fast cycle times, powerful breakout forces and optimal attachment performance.

#### Two-Speed Travel

Optional Two-Speed travel boosts your loader's top travel speed to reduce the time it takes to move across your jobsite.

#### Automatic Ride Control

This optional feature cushions your load to reduce spillage and increase comfort.

*\*See individual machine options for availability.*



#### **PASSWORD-PROTECTED KEYLESS START**

Eliminate downtime from lost keys with convenient keyless start.





## R-SERIES COMFORT

**ENJOY THE ULTIMATE OPERATOR EXPERIENCE WITH THESE R-SERIES ENHANCEMENTS.**

### ONE-PIECE SEALED AND PRESSURIZED CAB

Repels dust and dirt, isolates the operator from engine and hydraulic noise, and enhances the efficiency of heating and air conditioning.

### OPTIONAL CLEAR-SIDE ENCLOSURE

Durable, mesh-free windows resist damage and abrasion while providing an optimal view.

### AUTOMATIC REARVIEW CAMERA DISPLAY

*(requires rearview camera)*

Switches your display to a camera view from behind the machine when you move in reverse.

### STANDARD OR PREMIUM LED LIGHTS

Reliable standard LED lights provide far-reaching visibility when natural light is low. Upgrade to optional premium LED front lights that wrap around the cab's upper corners for a wider beam that illuminates more of the jobsite.

## R-SERIES:

### Standard 5-Inch Display

The easy-to-read cab display panel provides full-featured machine interaction and monitoring capabilities from right in the cab.

### Optional 7-Inch Touch Display

The most advanced in-cab display for compact equipment includes all of the features included with the 5-inch standard display and more. With the optional touch display for R-Series loaders, you'll receive detailed machine information and experience unprecedented device connectivity.



### • Phone and Device Connectivity

Stream music or podcasts or make and receive hands-free phone calls. Available on the 7-inch touch display.

### • Active Noise Canceling During Phone Calls

Ensures that call recipients hear operators easily and clearly. Available on the 7-inch touch display.

### Standard Display Features

- Monitor and change attachment settings.
- Laser positioning for laser-guided grading attachments
- Sonic tracer/slope sensor control
- Activate or deactivate auto idle.
- Track engine hours from any screen on the display.

### Screen Durability

Designed to work in open cabs and extreme weather.

### Detailed Fault Code Information

Save time troubleshooting with more detailed error code explanations and instructions.

### On-Screen Attachment Control

Monitor and position select attachments, or use tips to improve operator productivity.

## M2- AND M3-SERIES:

### Deluxe Instrumentation

The deluxe instrument panel option for M2-Series and select M3-Series loaders enables machine monitoring and interaction, keyless start, and machine performance information in English, Spanish and five other languages.

## OTHER INNOVATIVE TOUCH SCREEN FEATURES:

- Import contacts from your mobile phone.
- Keep a customizable contacts list for each operator.
- Access detailed operator statistics and provide jobsite security with 20 unique operator codes.
- Enable feature lockouts and maximum travel speeds to customize the experience per operator.
- Track engine hours, idle hours and fuel usage by operator.
- Set a new clock for each job to track machine productivity and employee performance.
- Add favorite screens for easy access.
- Integrated radio includes 12 AM and FM radio presets and six weather band presets for each operator.
- USB power port keeps devices charged and supports MTP for playing music.
- Auxiliary input via 3.5 mm jack.



## COMPACT LOADERS FEATURES AND BENEFITS



**YOU CAN FIND THESE HALLMARKS OF BOBCAT COMFORT WITH THE ENTIRE LINEUP OF BOBCAT COMPACT LOADERS.**

### **SIDE LIGHTING KIT**

Optional side lights are integrated with the machine design, with improved placement and protection against jobsite debris. Get higher light output and better productivity around the clock.



### **ALL-AROUND VISIBILITY**

Large front, side, top and rear windows provide a better view of your work, plus you can see the tracks or tires without raising the lift arms. The cab-forward design moves you closer to the attachment for a better vantage point.



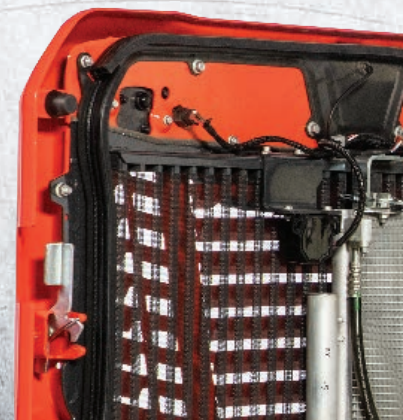
### **CHOICE OF CONTROLS**

Most models offer standard controls featuring steering levers and dual foot pedals or the option of Selectable Joystick Controls (SJC) that feature low-effort hand control of all machine work group functions. See page 31 for details.



### **REARVIEW CAMERA**

The optional rear camera offers a continuous rear view from the operator's seat when desired.





# TAKE ON YOUR MOST CHALLENGING WORK.

## UPTIME

**CHOOSE R-SERIES LOADERS FOR MAXIMUM UPTIME PROTECTION.**

### EFFICIENT COOLING

The cooling system includes a high-capacity radiator and oil cooler, plus a fan that's 50% larger than prior models. The louvered tailgate and inline engine enable optimal airflow.

### CAST-STEEL BOB-TACH ATTACHMENT MOUNTING SYSTEM

The Bob-Tach® attachment mounting system provides a stronger, cast-steel connection point with fewer welds, plus openings that allow dirt and debris to pass through.

### INNOVATIVE FUEL SYSTEM

The Bobcat engine reduces and simplifies routine maintenance, while the fuel module captures more usable fuel from every tankful. The large fuel filter offers better system protection and longer filter life, plus it's easier to change. The new fuel pump includes a self-priming system to eliminate the need for a primer bulb.

**PROTECT YOUR UPTIME WITH THESE INNOVATIONS FROM BOBCAT.\***

### REVERSING FAN

Temporarily reverse the cooling fan direction to blow dust and small debris from the radiator and rear screens, reducing maintenance and downtime.

### PROTECTED COMPONENTS

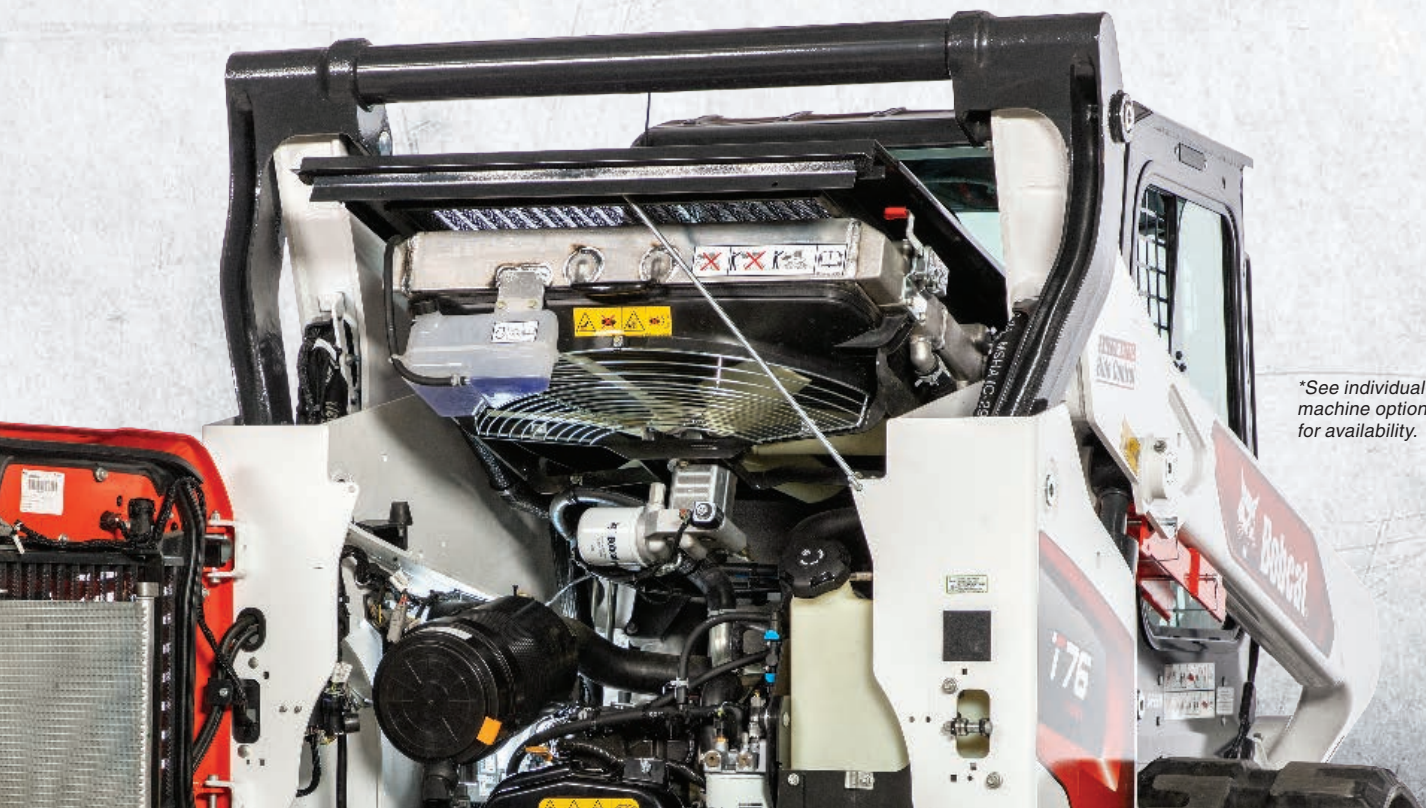
Bobcat loaders are designed with protected hoses and quick couplers, and electronics that feature watertight, corrosion-resistant connectors.

### SIMPLE, STATE-OF-THE-ART, NON-DPF DIESEL ENGINE

Bobcat engines meet Tier 4 regulations without a diesel particulate filter (DPF). This reduces downtime from DPF regeneration and long-term DPF maintenance costs.

### MACHINE PROTECTION

The system alerts you and, if necessary, de-rates engine power and hydraulic flow if there is a risk of damage – while allowing you to complete the job or move the loader for diagnosis.



*\*See individual machine options for availability.*



## COMPACT LOADERS FEATURES AND BENEFITS



## SERVICEABILITY

Easily access filters, fluid fills and other key maintenance items.

### SELF-DIAGNOSTICS

On all Bobcat loaders equipped with a digital display, you can track machine performance and access machine alerts via the bright, easy-to-read LCD monitor.

### R-SERIES:

#### ADJUSTMENT-FREE BELTS

The alternator and AC compressor belt on R-Series loaders feature auto tensioning for quick and easy serviceability.

#### PROTECTED BATTERY WITH REMOTE JUMPSTART

With R-Series loaders, the battery is located under the cab – separated from the engine compartment. A remote terminal, located in the engine compartment, makes it easy to charge the battery or jumpstart the loader if needed.

## VERSATILITY

### DO MORE THAN DIG.

Take on new jobs and get more use from your machine with loader attachments. See pages 38-48 for loader attachment options.

#### EXCLUSIVE

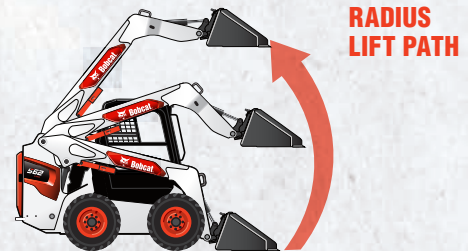
#### EASY ATTACHMENT CHANGES

Use the standard Bob-Tach attachment mounting system to change attachments in less than a minute. The optional Power Bob-Tach system changes non-hydraulic attachments from inside the cab. With the Bob-Dock™ system, available on select models, you can change hydraulic attachments from inside the cab. See page 31 for details.

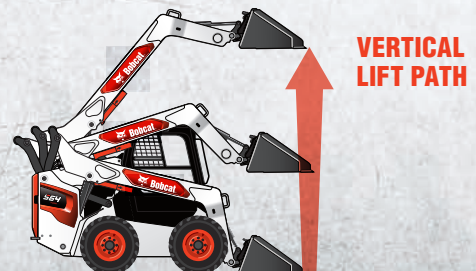
#### HIGH-FLOW HYDRAULICS

This option for most Bobcat compact loaders provides a big power boost for improved production with select hydraulic attachments.

## LIFT PATH TYPES FOR LOADERS



Arc arm movement for maximum reach at truck bed height.



Higher lift capacity and more reach at full lift height.



# CONTROLS AND TECHNOLOGIES



## SELECTABLE JOYSTICK CONTROLS (SJC)

Optional on Bobcat skid-steer and compact track loaders.

SJC offer low-effort hand control of all machine work group functions. ISO or “H” patterns can be easily activated by a push button or rocker switch inside the cab.

### Operation Modes Include:

#### DRIVE RESPONSE MODE

Three different settings change how the drive responds to joystick movement.

#### WORK GROUP RESPONSE MODE

Three different settings change how the lift and tilt functions respond to joystick movement.

#### SPEED MANAGEMENT

Simply “dial in” your required travel speed in small increments to match speed to your operation requirements and maximize attachment performance. Speed management gives you a full range of joystick motion at a slower speed, giving you precise control of machine movements while maintaining maximum driveline torque and full hydraulic power.

### EXCLUSIVE

#### STEERING DRIFT COMPENSATION

Makes minor adjustments to the steering – this is beneficial when you side-shift certain attachments.

#### HORSEPOWER MANAGEMENT

Automatically adjusts the loader drive system to maximize pushing and digging power while minimizing the chance of stalling. It's disabled when you use speed management.



## BOB-DOCK ATTACHMENT MOUNTING SYSTEM

Available for select M2-Series compact loaders.

### EXCLUSIVE

#### FASTER, EASIER ATTACHMENT CHANGES – WITHOUT LEAVING THE CAB

The Bob-Dock attachment mounting system enables you to change hydraulic attachments without stepping outside the cab to remove or connect hoses. Simply maneuver your loader to engage the Bob-Dock connector plate, and the hydraulic system is instantly coupled with the attachment. It's instantly ready to work. No leaving the cab to face the elements. No hot or dirty hydraulic lines.





# BRING INNOVATION TO WORK.

## MACHINE IQ BASICS

This is a subscription service enabling access to the Machine IQ Basics package for each machine enrolled.

- Use the features to perform services that maximize productivity and the life of your machine.
- Access machine info 24/7 through your Bobcat Owner Portal account.
- Machine IQ Basics subscription is included with a machine purchase for the first three years of retail at no cost to you.

## BASIC TELEMATICS

Improve your machine management strategy by tracking key information points, including:

- GPS location and history
- Operating hours
- Last recorded fuel levels
- Custom asset names for each machine
- Planned or custom maintenance interval tracking

## MACHINE IQ HEALTH AND SECURITY

Upgrade your machine subscription to the Health and Security features to watch your machines even more proactively, with increased information points.

- Includes all Basics package features plus additional advanced features.

## ADDITIONAL FEATURES WITH HEALTH AND SECURITY PACKAGE

- Maintenance reminder email alerts with instructions and parts lists
- Clear, detailed fault code notifications and troubleshooting
- Geofence and curfew creation with breach notifications
- Machine utilization reporting
- Manage and monitor notifications within my.Bobcat.com



## BOBCAT OWNER PORTAL AND MACHINE IQ WIRELESS COMMUNICATIONS

Monitor and manage your fleet from anywhere.

Machine IQ wireless communications connects you to your machine's information at any time, anywhere, from any device. Using Machine IQ, you can check on the health of your machines and remotely track information that enhances maintenance, security and performance.

Via your Bobcat Owner Portal account at my.Bobcat.com, you can access machine information anytime.

Choose the Machine IQ package that is right for you.



# BOBCAT MAXCONTROL REMOTE OPERATION

Control your loader using an app on your iOS smartphone.

This economical system functions as an extra set of hands when help is limited, allowing quick two-person jobs to be handled by a single operator and enabling operators to avoid repeated trips in and out of the cab.

- The app turns your phone into a control unit for the loader, allowing you to command machine functions and operate attachments from outside of the cab – up to 300 feet away.
- Once the system is installed, the equipment you need is in your pocket, ready to work.
- There are no large, heavy remote controls to remember (or forget). When you need to work, just open your app.

**Additional Bobcat MaxControl technologies are coming soon, including the ability to:**

- Erect geofences around objects you want to avoid.
- Plot paths on the digital worksite for your machine to follow.

Visit [Bobcat.com](http://Bobcat.com) for updates.

*An optional radio remote control system is also available for compact loaders with Selectable Joystick Controls. NOTE: Not approved for certain types of hazardous or explosive environments.*



# Bobcat®

FEATURES **ON DEMAND**

## BOBCAT FEATURES ON DEMAND

*Available for select compact loaders.*

Now you have the flexibility to enable additional features on your R-Series compact track loader or skid-steer loader – after purchase – as work demands and budget allows.

With Bobcat Features On Demand, you can test a variety of premium features before buying and then purchase the ones you need. If you decide later that you need additional features, just call your dealer – they can quickly and easily “turn on” the features you request. You won’t have to purchase all-new equipment to get the features you need, when you need them.

Available features include:

- Two-Speed travel
- High-flow hydraulics
- Automatic ride control
- Reversing fan
- Dual-direction bucket positioning
- Auto-throttle
- Turn management (coming soon!)

**Additional features coming soon.  
Watch [Bobcat.com](http://Bobcat.com) for updates.**



# Bobcat®

## MAXCONTROL REMOTE OPERATION





# PUT TOUGH JOBS ON SOLID FOOTING.

GET BIG RESULTS WITH HIGH PUSHING FORCE, FLOTATION AND LIFTING ABILITY ... AND AVOID GROUND DISTURBANCE.



## INCREASED FLOTATION

Reduce ground disturbance and minimize cleanup when the job is done.

## DURABLE TRACK SYSTEM

Featuring the industry's toughest forged steel rollers and idlers, steel-embedded tracks and protected hydraulic hoses and drive motors.

## 5-LINK TORSION SUSPENSION UNDERCARRIAGE

Dramatically reduces vibration from the undercarriage, making your ride more comfortable. The fifth link on the rear axle provides additional stability when lifting a load high or when performing grading tasks.

**NOTE:** Standard on M2-Series T870 loaders and optional on R-Series compact track loaders.

## SOLID-MOUNTED UNDERCARRIAGE

Standard on most models, providing improved traction to work in mud, sand, manure, dirt and other soft conditions.

## ROLLER SUSPENSION SYSTEM

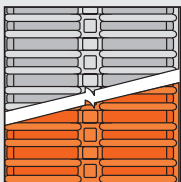
Maintenance-free and delivers a smooth ride and lasting durability even in demanding environments.

Available on M2-Series models.

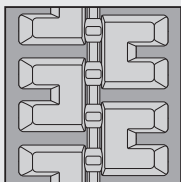
## BOBCAT TRACKS

 EXCLUSIVE

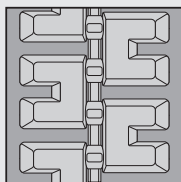
Multiple patterns are available to match your track to your work conditions:



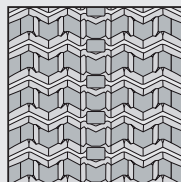
MULTI-BAR LUG



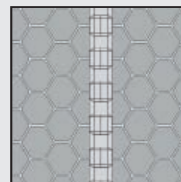
STANDARD-DUTY C-PATTERN



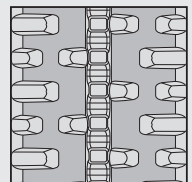
PREMIUM C-PATTERN



ZIG ZAG PATTERN



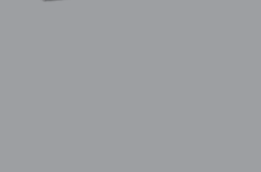
HEX PATTERN



H-PATTERN



# COMPACT TRACK LOADERS SPECIFICATIONS



	HORSEPOWER	RATED OPERATING CAPACITY (35% OF TIP)	OPERATING WEIGHT	GROUND PRESSURE – STANDARD TRACKS	AUXILIARY HYDRAULIC FLOW	HIGH-FLOW OPTION	LIFT PATH TYPE
<b>800 FRAME SIZE</b>							
<b>T870</b>							
M2-Series Torsion suspension system	100.0 hp (74.6 kW)	3650 lb. (1656 kg)	12,925 lb. (5863 kg)	4.8 psi (0.33 bar)	23.0 gpm (87.1 L/min.)	36.6 gpm (138.5 L/min.)	Vertical
<b>700 FRAME SIZE</b>							
<b>T770</b>	92.0 hp (68.6 kW)	3475 lb. (1576 kg)	10,515 lb. (4770 kg)	4.2 psi (0.29 bar)	23.0 gpm (87.1 L/min.)	36.6 gpm (138.5 L/min.)	Vertical
<b>T740</b>	74.0 hp (55.2 kW)	3200 lb. (1451 kg)	10,127 lb. (4594 kg)	4.1 psi (0.28 bar)	23.0 gpm (87.1 L/min.)	30.5 gpm (115.5 L/min.)	Vertical
<b>70-60 FRAME SIZE</b>							
<b>T76</b>	74.0 hp (55.2 kW)	2900 lb. (1315 kg)	10,250 lb. (4649 kg)	6.2 psi (0.42 bar)	23.3 gpm (88.2 L/min.)	30.3 gpm (114.7 L/min.)	Vertical
<b>T66</b>	74.0 hp (55.2 kW)	2450 lb. (1111 kg)	8927 lb. (4049 kg)	5.9 psi (0.40 bar)	17.6 gpm (66.6 L/min.)	26.9 gpm (101.8 L/min.)	Vertical
<b>T64</b>	68.0 hp (50.7 kW)	2300 lb. (1043 kg)	8727 lb. (3958 kg)	5.7 psi (0.39 bar)	17.6 gpm (66.6 L/min.)	26.9 gpm (101.8 L/min.)	Vertical
<b>T62</b>	68.0 hp (50.7 kW)	2150 lb. (975 kg)	8612 lb. (3906 kg)	5.6 psi (0.38 bar)	17.6 gpm (66.6 L/min.)	26.9 gpm (101.8 L/min.)	Radius
<b>500-400 FRAME SIZE</b>							
<b>T595</b>	70.0 hp (52.2 kW)	2200 lb. (998 kg)	8022 lb. (3638 kg)	5.1 psi (0.35 bar)	17.1 gpm (64.7 L/min.)	–	Vertical
<b>T550</b>	68.0 hp (50.7 kW)	1995 lb. (905 kg)	7557 lb. (3428 kg)	4.9 psi (0.34 bar)	17.1 gpm (64.7 L/min.)	–	Radius
<b>T450</b>	55.0 hp (41.0 kW)	1490 lb. (676 kg)	6424 lb. (2914 kg)	4.8 psi (0.33 bar)	16.7 gpm (63.2 L/min.)	–	Radius

Contact your dealer or visit [Bobcat.com](http://Bobcat.com) to request a price quote today.



# THE ORIGINAL AND STILL THE BEST

**BOBCAT COMPANY INVENTED THE WORLD'S FIRST COMPACT LOADER IN 1958 AND THE FIRST SKID-STEER LOADER IN 1960. TODAY, IT'S STILL THE WORLD'S BESTSELLING SKID-STEER LOADER BRAND.**



## HIGHLY MANEUVERABLE

A skid-steer loader is compact and can pivot 360 degrees, allowing you to easily maneuver in close quarters.



### EXCLUSIVE

#### MAINTENANCE-FREE CHAINCASE

Bobcat-exclusive design and tight-tolerance chain placement eliminate the need for adjustments.

#### EFFECTIVE WEIGHT BALANCE

Bobcat skid-steer loaders offer effective turning and skidding, reduced fuel consumption and power requirements, increased drive train and tire life, and reduced wear and tear.

## BOBCAT TIRES

### EXCLUSIVE

Multiple options are available to match your tires to your work conditions:



STANDARD-DUTY



HEAVY-DUTY



SEVERE-DUTY



TURF AND SAND



SUPER-FLOAT



SMOOTH

*Bobcat provides a variety of tire patterns: solid, non-marking and pneumatic designs.*



# SKID-STEER LOADERS SPECIFICATIONS



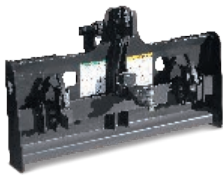
	HORSEPOWER	RATED OPERATING CAPACITY (50% OF TIP)	OPERATING WEIGHT	AUXILIARY HYDRAULIC FLOW	HIGH-FLOW OPTION	LIFT PATH TYPE
<b>800 FRAME SIZE</b>						
<b>S850</b> M2-Series	100.0 hp (74.6 kW)	3950 lb. (1792 kg)	10,237 lb. (4643 kg)	23.0 gpm (87.1 L/min.)	36.6 gpm (138.5 L/min.)	Vertical
<b>700 FRAME SIZE</b>						
<b>S770</b> M2-Series	92.0 hp (68.6 kW)	3350 lb. (1520 kg)	9314 lb. (4225 kg)	23.0 gpm (87.1 L/min.)	36.6 gpm (138.5 L/min.)	Vertical
<b>S740</b> M2-Series	74.0 hp (55.2 kW)	3100 lb. (1406 kg)	8794 lb. (3989 kg)	23.0 gpm (87.1 L/min.)	30.5 gpm (115.5 L/min.)	Vertical
<b>70-60 FRAME SIZE</b>						
<b>S76</b> R-Series	74.0 hp (55.2 kW)	2900 lb. (1315 kg)	8615 lb. (3908 kg)	23.3 gpm (88.2 L/min.)	30.3 gpm (114.7 L/min.)	Vertical
<b>S66</b> R-Series	74.0 hp (55.2 kW)	2400 lb. (1089 kg)	7154 lb. (3245 kg)	17.6 gpm (66.6 L/min.)	26.9 gpm (101.8 L/min.)	Vertical
<b>S64</b> R-Series	68.0 hp (50.7 kW)	2300 lb. (1043 kg)	6974 lb. (3163 kg)	17.6 gpm (66.6 L/min.)	26.9 gpm (101.8 L/min.)	Vertical
<b>S62</b> R-Series	68.0 hp (50.7 kW)	2100 lb. (952 kg)	6884 lb. (3123 kg)	17.6 gpm (66.6 L/min.)	26.9 gpm (101.8 L/min.)	Radius
<b>500-400 FRAME SIZE</b>						
<b>S590</b> M3-Series	68.0 hp (50.7 kW)	2100 lb. (952 kg)	6765 lb. (3069 kg)	17.1 gpm (64.7 L/min.)	–	Vertical
<b>S510</b> M3-Series	55.0 hp (41.0 kW)	1790 lb. (812 kg)	6208 lb. (2816 kg)	17.1 gpm (64.7 L/min.)	–	Radius
<b>S450</b> M3-Series	49.0 hp (36.5 kW)	1370 lb. (621 kg)	5370 lb. (2436 kg)	16.7 gpm (63.2 L/min.)	–	Radius
<b>S70</b>	23.5 hp (17.5 kW)	760 lb. (344 kg)	2892 lb. (1312 kg)	9.8 gpm (37.1 L/min.)	–	Radius

Contact your dealer or visit [Bobcat.com](http://Bobcat.com) to request a price quote today.



# ADD ATTACHMENTS

TO TRANSFORM ONE LOADER INTO A VERSATILE FLEET  
TO HELP YOU TAKE ON MAJOR PROJECTS.



## 3-POINT ADAPTER

Add versatility to your loader or utility work machine.

- Enable the use of Category 1 and 2 implements.
- Bob-Tach attachment mounting system offers quick-mounting capabilities.
- Adjustable top link for added versatility.
- Offers 2-inch receiver for towing trailers.

APPROVED MACHINES: CTL, SSL, TC



## ANGLE BROOM

Sweep driveways, sidewalks, parking lots and more.

- Quick-change rotor design simplifies maintenance.
- 25- to 30-degree angles left or right.
- The 68- and 84-inch brooms offer reversible sweeping for back dragging from obstacles such as curbs.
- The 52- and 64-inch brooms feature a self-centering pivot design to clean narrow paths and sidewalks with ease.
- 52-, 64-, 68- and 84-inch broom options.
- Polypropylene bristle wafers offer superior cleaning and durability.

APPROVED MACHINES: CTL, CWL, MTL, SAL, SSL, TC, TL



## AUGER

Dig holes deeper and faster with less effort.

- Available in light duty, standard duty, heavy duty and rock duty.
- Knuckle-joint design digs vertical holes on uneven terrain.
- 58- to 72-inch digging depth without extension.
- 6- to 48-inch diameter bits available.

APPROVED MACHINES: CTL, CWL, SAL, SSL, MX, MTL, TC, TL



## AUTOMATIC GRADE CONTROL, LASER

Save time and money with near-perfect grading.

- Get  $\pm 0.25$ -inch accuracy for less staking.
- Compatible with both grader (models 84, 96 and 108) and box blade attachments.
- Ideal for new construction and open areas.
- Set parameters of grading system, get real-time details, make adjustments and switch to manual operation with the optional deluxe instrument panel.

APPROVED MACHINES: CTL, SSL





## AUTOMATIC GRADE CONTROL, SONIC/SLOPE TRACER

Get maximum efficiency and accuracy on complex jobsites.

- Get ±0.25-inch accuracy for less staking.
- Perfect when following a string line, curb or grading with obstacles that block laser transmitter.
- Available for 96- and 108-inch grader models.
- Set parameters of grading system, get real-time details, make adjustments and switch to manual operation with the optional deluxe instrument panel.

APPROVED MACHINES: CTL, SSL



## AUTOMATIC GRADE CONTROL, 3D-READY SYSTEM

Never come in below grade again.

- Get ±0.25-inch accuracy for less staking.
- Digital designs and 3D grade control system quickly and accurately sculpt the land.
- Compatible with the Earthworks 3D grade control system.
- Grade valleys, ditches, contours, sports fields, roads, highways and residential properties.
- Approved for use with 96- and 108-inch grader and heavy-duty box blade attachments.

APPROVED MACHINES: CTL, SSL



## BACKHOE

Handle full-time excavating jobs with a Bobcat loader.

- Class 3 available grading bucket width.
- 9- to 36-inch trenching bucket widths.
- Up to 135.7-inch maximum dig depth.
- Increase versatility with select X-Change™ attachments.

APPROVED MACHINES: M-SERIES CTL, MTL, M-SERIES SSL

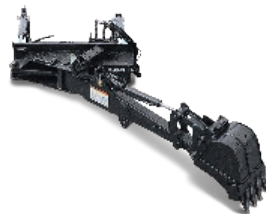


## BALE FORK

Efficiently lift, haul and stack hay bales.

- 40.8-inch fork length.
- Penetrate material with two small-diameter tines.
- Mount to standard or heavy-duty pallet fork attachment frame.
- Save time when moving round, square or uneven hay bales.

APPROVED MACHINES: CTL, SSL, TC, TL



## BOB-TACH BACKHOE

Mount directly to the loader. No kit required.

- Easily mount the backhoe to the loader without mounting kits or stabilizers.
- Dipper swings up to 48 degrees left or right.
- Standard bolt-on X-Change system.
- 13-, 16- and 20-inch bucket widths.

APPROVED MACHINES: CTL, SSL



## BORING UNIT

Bore without tearing up paved areas.

- Install cable or pipe up to 4 inches in diameter.
- Operate directly next to buildings and obstacles.
- Bore up to 2 feet deep and 30 feet horizontally.

APPROVED MACHINES: MTL, SAL, SSL

NOTE: Not all attachments are approved for all compact loader models.

APPROVED MACHINES | CTL Compact Track Loader CT Compact Tractor MX Compact Excavator MTL Mini Track Loader  
SAL Small Articulated Loader SSL Skid-Steer Loader TC Toolcat™ Utility Work Machine TL Telehandler



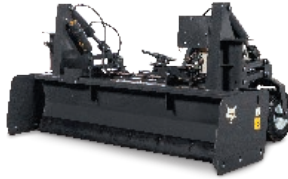


## BOX BLADE

**Excel at standard and rough grading projects.**

- Laser control offers  $\pm 0.25$ -inch accuracy.
- Eliminate flats with foam-filled tires.
- Oscillating bolster increases first-pass accuracy.

**APPROVED MACHINES:** CTL, SSL, TC



## BOX BLADE, HEAVY-DUTY

**Move material fast.**

- Hydraulic blade oscillation for dual slope grading. In addition to dual slope grading, the HD box blade is also compatible with 3D grading.
- Compact design has wheels behind the blade for grading in tight spaces.
- Dual blades allow material to be moved in both forward and reverse directions. Leave no trace when grading in reverse.
- 17 cubic feet front box capacity.
- 10 cubic feet rear box capacity.

**APPROVED MACHINES:** CTL, SSL



## BRUSHCAT™ ROTARY CUTTER

**Cut smoothly on uneven terrain.**

- 44- to 80-inch cutting widths.
- 3-inch cutting height.
- Short deck design reduces weight, increases visibility and allows tighter turning.
- Self-adjusting, pivoting flotation linkage minimizes the effect of uneven ground and increases first-pass accuracy.

**APPROVED MACHINES:** CTL, SAL, SSL, MTL, TC



## BREAKER, HYDRAULIC

**Break concrete faster.  
Cut through rocks easier.**

- Matches hydraulic capacity of the carrier to the breaker for consistent machine-to-breaker performance.
- Quieter, smoother operation while maintaining blows per minute.
- Automatically regulates pressure regardless of changes in outdoor temperature.
- Seven models available from 60 ft.-lb. to 1,000 ft.-lb. impact energy class.

**APPROVED MACHINES:** CTL, SAL, SSL, MX, MTL



## BREAKER, NITROGEN

**Smash that deadline.  
Protect that uptime.**

- Offers a long piston stroke to maximize impact energy and reduce recoil.
- Unique valve design reduces pressure fluctuations and strain on carrier hydraulic pumps.
- Only two moving parts, and all grease points are within easy reach.
- Six models available from 150 ft.-lb. to 1,500 ft.-lb. impact energy class.

**APPROVED MACHINES:** CTL, SAL, SSL, MX, MTL

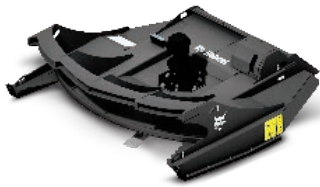


## BRUSH SAW

**Cut down brush and clear small trees.**

- Saw small trees flush with the ground or below the surface.
- Manually position the boom 12 degrees left, right or center.
- 28.5-inch cutting wheel diameter.
- 3,256 ft./min. at 24 gpm max wheel tip speed.

**APPROVED MACHINES:** CTL, SSL

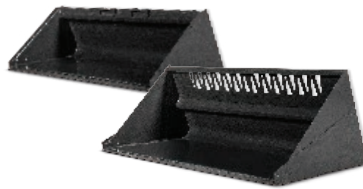


## BRUSH CUTTER, HEAVY-DUTY

**Reversible cutting direction  
doubles blade life.**

- Reinforced deck and quick spin-down for increased protection.
- Built to take on brush-clearing jobs both big and small.
- Front push bar keeps material at a distance while the three-blade rotary cutter cuts it down.
- Cuts up to 10-inch-diameter trees.
- High-efficiency hydraulic motors maximize carrier output.
- Three cutting widths: 62-, 74- and 86-inch.

**APPROVED MACHINES:** SSL, CTL

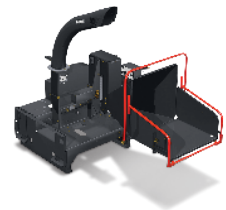


## BUCKETS

**The best-built bucket in the industry.**

- Standard-duty bucket for lighter-duty jobs.
- Heavy-duty bucket for high breakout forces.
- Severe-duty bucket for extreme applications.
- Light-material bucket for snow, mulch or fertilizer.
- Combination bucket can be used as a bucket, grapple, dozer and for spreading material.
- Rock bucket features gusseted tines and high-steel strength.
- Dirt bucket offers weld-on cutting edge.
- Utility bucket for small articulated loaders with see-through back.

**APPROVED MACHINES:** SSL, CWL, CTL, TC, SAL, TL



## CHIPPER

**Avoid hauling debris.  
Chip on the spot.**

- Chip materials up to 5 inches in diameter.
- Ideal for tree pruning and removal, municipalities, parks and recreation, rentals, and personal property maintenance.
- Remote attachment control safely starts and stops the machine and chipper from outside the loader.
- Discharge chute rotates 360 degrees. Includes adjustable deflector.

**APPROVED MACHINES:** SSL, CTL, TC



## CONCRETE MIXER

**Mix concrete wherever, whenever.**

- Transports, mixes and dumps concrete faster.
- Perfect for sidewalks, driveways, finish work, fence posts and footings.
- Remote attachment control safely starts and stops the machine and concrete mixer from outside the loader.
- 6.9 cubic feet batch capacity.

**APPROVED MACHINES:** SSL, CTL



## CONCRETE PUMP

**Easily pour concrete in  
difficult-to-reach areas.**

- Pump concrete up to 250 feet horizontally and up to two stories vertically.
- Standard-flow loaders place up to 18 cubic yards per hour.
- High-flow loaders place up to 30 cubic yards per hour.
- Start the pump without entering the loader with the optional remote control kit.

**APPROVED MACHINES:** SSL, CTL



## DIGGER

**Save time with powerful forward  
and reverse digging.**

- 28-inch dig depth on 12S digger attachment.
- 48-inch dig depth on 25-, 30- and 36-inch digger attachments.
- Efficiently dig in forward and reverse.
- Replace the shovel. Save time and manual labor.

**APPROVED MACHINES:** SSL, CTL, SAL, MTL

*NOTE: Not all attachments are approved for all compact loader models.*

**APPROVED MACHINES** | **CTL** Compact Track Loader **CT** Compact Tractor **MX** Compact Excavator **MTL** Mini Track Loader  
**SAL** Small Articulated Loader **SSL** Skid-Steer Loader **TC** Toolcat Utility Work Machine **TL** Telehandler





## DOZER BLADE

Turn your machine into a mini dozer.

- Push large amounts of material quickly and easily.
- Adjustable skid shoes provide depth control and forward and reverse grading.
- Reversible cutting edge adds versatility and increases uptime.
- 96-inch dozer blade model features all-cast design for maximum strength and productivity.
- 30 degrees of angling with all models.

APPROVED MACHINES: CTL, SSL, TC



## DROP HAMMER

Easily demolish flat concrete slabs.

- Delivers over 3,600 ft.-lb. of impact energy at 20 blows per minute.
- Best suited for flat, larger areas.
- 14- to 18-inch maximum concrete thickness.
- 5-inch minimum concrete thickness.

APPROVED MACHINES: CTL, SSL



## DRUM MULCHER\*

Shred trees and overgrowth into mulch.

- Features high-strength, steel-body construction for leading durability and performance.
- Select drum mulchers feature a new depth control rotor for a more efficient bite into trees up to 8 inches diameter.
- Equip your loader with a 50-, 61- or 72-inch drum mulcher.

APPROVED MACHINES: CTL, SSL

\*Forestry Applications Kit required.

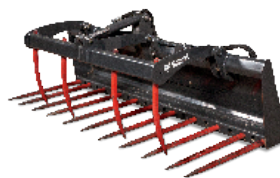


## GRAPPLE, ROOT

Rip through tough land-clearing jobs.

- Curved skeletal tooth design picks up material without driving teeth into the ground; dirt falls on-site.
- Fully enclosed mounting frame extends wear life by minimizing frame area flexing.
- Exclusive inertia-welded cylinder ends deliver strong, smooth operation through improved hydraulic cushioning at the end of the stroke.
- Dual cylinders on larger models offer a secure grip on uneven loads.

APPROVED MACHINES: CTL, SSL, MTL, SAL, TC, TL



## GRAPPLE, UTILITY

Grab on to loose, hard-to-handle material.

- Curved teeth deliver efficient scooping capabilities for the loosest materials.
- Forged teeth provide exceptional strength with low weight, increasing carrying capacity.
- Quickly and easily add more teeth to efficiently handle smaller materials.
- 29.9- to 32.6-inch maximum opening.

APPROVED MACHINES: CTL, MTL, SAL, SSL



## FLAIL CUTTER

Clear brush and small trees.

- 78-inch cutting width.
- Variable displacement motor matches attachment to carrier's capabilities.
- Three cutting heights for a variety of terrains and brush types.
- Produces fine mulching action and minimizes bunching of thick brush.

APPROVED MACHINES: CTL, SSL, TC, TL



## DUMPING HOPPER

Move material where dump trucks can't.

- Mounts easily onto Bobcat loaders for transportation to jobsites.
- Large-capacity hopper empties quickly and easily.
- Model 25  
67.5 cubic feet struck capacity.  
87.9 cubic feet heaped capacity.
- Model 10  
25.7 cubic feet struck capacity.  
29.7 cubic feet heaped capacity.

APPROVED MACHINES: CTL, SSL, SAL, TC



## GRAPPLE, INDUSTRIAL

Get a grip on bulky material and oddly shaped objects.

- Dual cylinders on larger models offer a secure grip on uneven loads.
- Removable hose guide offers easy hose routing when grapple is attached. Reduces exposure to hazards.
- A Bobcat-exclusive design, the inertia-welded cylinder ends deliver strong, smooth operation through improved hydraulic cushioning at the end of the stroke.
- Bobcat tines are backed by more steel and greater reinforcement.

APPROVED MACHINES: CTL, CWL, MTL, SAL, SSL, TC, TL



## GRAPPLE, LOG

Lift and move logs, fallen trees and other heavy-duty material.

- Reinforced tines provide powerful and lasting grip on logs and brush.
- Integrated tree pusher assists in felling branches, stems or trees in the intended direction.
- Rope bollards maximize stability and control when directing debris during cutting.
- Heavy-duty teeth help stabilize logs of all sizes during operation.

APPROVED MACHINES: MTL, SAL

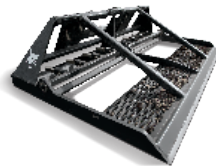


## GRADER

Grade with consistent precision and control.

- Achieve  $\pm 0.25$ -inch accuracy or better.
- Manual side-shift on 84-inch models moves blade up to 12 inches left or right.
- Hydraulic side-shift on larger models moves blade up to 13 inches left or right.
- Proportional hydraulic valve control offers three speeds to better match the loader's speed.

APPROVED MACHINES: CTL, SSL, TC



## LANDPLANE

Break up hard ground and level surfaces in forward and reverse.

- Removable metal grate efficiently breaks clumps.
- Easily loosen stubborn soils with the bi-directional scarifier.
- 48-, 73- and 79-inch widths.
- 3- and 3.5-inch working depth scarifier.

APPROVED MACHINES: CTL, CWL, MTL, SAL, SSL, TC



## LANDSCAPE RAKE

Get the perfect finish for your jobsite.

- 60- and 72-inch working widths.
- Rake and collect surface debris while smoothing and leveling soil.
- Hardened teeth offer maximum uptime protection.
- Side skis provide adjustable depth control.

APPROVED MACHINES: CTL, SSL, TC

NOTE: Not all attachments are approved for all compact loader models.

APPROVED MACHINES | CTL Compact Track Loader CT Compact Tractor MX Compact Excavator MTL Mini Track Loader  
SAL Small Articulated Loader SSL Skid-Steer Loader TC Toolcat Utility Work Machine TL Telehandler





## MOWER

**Deliver consistently close, clean cuts.**

- Oscillation allows the deck to float, providing a clean cut – even on uneven terrain.
- Front-mounted mower eliminates flattened grass before the cut.
- Anti-scalping wheel protects blades and mower deck for a longer blade life and consistent cutting height.
- 72- and 90-inch widths.

**APPROVED MACHINES:** CTL, SSL, TC



## PACKER WHEEL

**Compact trenches with power and efficiency.**

- Double wheel assembly with 30-inch wheel diameter.
- Operate without the need for auxiliary hydraulics.
- Eliminates work originally done by hand.
- Compact design increases versatility.

**APPROVED MACHINES:** CTL, MX, SSL



## PALLET FORK

**Save time lifting, carrying and moving materials.**

- Integrated, walk-through frame provides easier entry and exit.
- Pallet fork meets ISO 2330:2002 standards for yield and fatigue tests.
- Teeth available in 42- and 48-inch lengths. Bale forks available in 40.8-inch length.
- Hydraulic fork positions tines without the need to leave the cab, saving time and effort.

**APPROVED MACHINES:** CTL, CWL, SAL, SSL, TC, TL



## PLANER

**Efficiently cut and mill concrete or asphalt.**

- 14-, 18-, 24- and 40-inch models.
- Oscillation up to  $\pm 15$  degrees.
- Standard hydraulic side lifts get you closer to curbs and walls.
- High-flow planers increase hydraulic horsepower for higher production.

**APPROVED MACHINES:** CTL, SSL



## REAR STABILIZER

**More force to power through any dig.**

- Frame-mounted at the rear of the loader.
- Transfers the weight of the loader to the attachment, providing more force.
- Street pads protect sensitive surfaces from damage.
- Grouser bars prevent loader from being pulled toward the work area.

**APPROVED MACHINES:** CTL, SSL



## SCARIFIER

**Demolish asphalt and hard-packed soil.**

- Mounted on the front of the loader.
- Operates when loader is in reverse.
- Manual lock holds teeth in position for steady results.
- Set the digging depth with adjustable depth skis.

**APPROVED MACHINES:** CTL, SSL

*NOTE: Not all attachments are approved for all compact loader models.*

**APPROVED MACHINES** | CTL Compact Track Loader CT Compact Tractor MX Compact Excavator MTL Mini Track Loader  
SAL Small Articulated Loader SSL Skid-Steer Loader TC Toolcat Utility Work Machine TL Telehandler



## SCRAPER

**Eliminate packed-on or built-up materials.**

- Easily break packed materials to leave a smooth surface.
- Remove mud, snow, ice and even carpet and floor tiles.
- Self-sharpening cutting edge easily peels beneath material for removal.
- 22-inch disk diameter.

**APPROVED MACHINES:** CTL, SSL, TC, TL



## SEEDER

**Precisely place seed at the perfect depth and spacing.**

- Covers over 2 acres per hour.
- Ground-driven unit seeds directly into soil for better germination and precise coverage.
- Front roller firms ground, presses small rocks beneath the surface and plants the seed into the seedbed.
- Second roller gently forms soil around seed for optimum seed-to-soil contact.

**APPROVED MACHINES:** CTL, CT, SSL, TC



## SILT FENCE INSTALLER

**Place and secure silt fence at an astonishing rate.**

- Meets erosion control regulations, avoiding costly fines.
- Covers thousands of feet per hour.
- Fastest, easiest and most economical way to meet compliance and avoid fines or shutdowns.

**APPROVED MACHINES:** CTL, SSL



## SNOW BLADE

**Unrivaled speed for light and moderate snow removal.**

- Quickly clear sidewalks, driveways, parking lots and more.
- Fingertip controls angle blade 30 degrees left or right.
- Standard-duty snow blade is designed to prevent attachment damage.
- Heavy-duty snow blade offers 5 degrees of oscillation left or right for cutting edge maneuverability.

**APPROVED MACHINES:** CTL, CWL, CT, MTL, SAL, SSL, TC, TL



## SNOW PUSHER

**Achieve maximum snow removal speed and efficiency.**

- Easily and efficiently clear big winter jobsites.
- Cover larger areas without frequent stops.
- Moldboard flotation and oscillation keep snow pusher in contact with the ground without damaging equipment or property.
- Accomplish safe and efficient snow removal on decorative or sensitive surfaces.

**APPROVED MACHINES:** CTL, CWL, SSL, TC, TL



## SNOW PUSHER PRO

**Seamlessly transition from snow plow to box plow.**

- The box hooks onto the snow plow in seconds without the operator needing to leave the cab – no pins, bolts or hinges.
- Windrow or back-drag with the plow normally, then grab the box to push out piles or windrows. Then go back to plowing – without leaving the cab.
- Reduces plowing times by 25% to 50%.

**APPROVED MACHINES:** CTL, CWL, SAL, SSL, TC, TL

*NOTE: Not all attachments are approved for all compact loader models.*

**APPROVED MACHINES** | **CTL** Compact Track Loader **CT** Compact Tractor **MX** Compact Excavator **MTL** Mini Track Loader  
**SAL** Small Articulated Loader **SSL** Skid-Steer Loader **TC** Toolcat Utility Work Machine **TL** Telehandler





## SNOW V-BLADES

Clear deep drifts of snow without leaving the cab.

- Scoop blade collects and holds snow for transportation.
- V-blade quickly cuts initial pathways through deep, heavy or hard-packed snow.
- Angle blade quickly and easily moves snow left or right.
- Straight blade gives maximum width for piling snow and cleaning light snow cover.

APPROVED MACHINES: CTL, SAL, SSL, TC, TL



## SNOWBLOWER

Throw and blow snow to clear a path.

- Increased intake height and bigger auger draw in more snow.
- The rounded intake provides a smoother surface to roll the snow into the feed impeller rather than pushing it, minimizing clogging and improving snow flow.
- Aggressive auger teeth – painted orange for improved visibility – easily break up and tear through packed snow and ice chunks.
- Direct-drive sprocket rotation improves the performance, durability and ease of maintenance of the snowblower chute.
- A reversible and replaceable wear edge bites into hard ice and packed snow, and is designed for long life.

APPROVED MACHINES: CTL, MTL, SAL, SSL, TC



## SOD LAYER

Create smooth, green landscapes.

- Make quick and easy work of laying fresh, green sod.
- Carry and lay a roll of sod up to 4 feet wide.
- Front-mounted maneuverability offers effective performance even on smaller jobsites.
- Perfect for daily operation or the occasional chore.

APPROVED MACHINES: CTL, SSL, TC



## SOIL CONDITIONER

Lay a good foundation for growth.

- 48- to 84-inch widths available.
- High-flow models available.
- Carbide-tipped teeth rip through obstacles to offer maximum ground penetration.
- Oscillating bolster on 72- and 84-inch models minimizes the effects of bumps and potholes.
- Front bolster offers better grade control and adjusts to create more room for transportation or storage.

APPROVED MACHINES: CTL, MTL, SAL, SSL, TC, TL

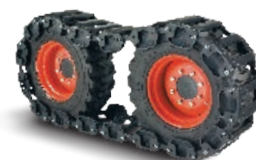


## SPREADER

No matter the season, the spreader has it covered.

- Maintain surfaces during winter, or spread seed and fertilizer during spring and summer.
- HS8 spreader offers three material flow gates that spread from 18 to 28 feet.
- Equip your utility work machine to spread sand and salt with the SP12 spreader.
- Offers 9.6 or 13.5 cubic feet of hopper capacity.

APPROVED MACHINES: CTL, SSL, TC



## STEEL TRACKS\*

Take on rough, rocky and muddy conditions.

- Easy-to-install steel tracks offer better flotation and reduced ground pressure.
- Improve traction in soft and loose conditions.
- After initial installation, steel tracks can be reinstalled in under 30 minutes.

APPROVED MACHINES: SSL

\*Not approved for R-Series skid-steer loaders.



## STUMP GRINDER

**Easily turn tree stumps into mulch.**

- 90-degree angle mount offers increased visibility to the cutting area.
- Operates off the carrier's auxiliary hydraulics, eliminating the need to maintain an engine while operating.
- Rubber deflecting shields protect operator from wood chips.
- Unique valve design reduces possibility of cutting wheel stalling while in the cut.

**APPROVED MACHINES:** CTL, MTL, SAL, SSL, TC



## SWEEPER

**Sweep, collect and dump dirt and debris.**

- Poly bristles sweep and deposit debris in the sweeper bucket.
- Simply dump sweeper bucket when full. No need for multiple cleanup attachments.
- Cut through materials with the replaceable and reversible bucket cutting edge.
- Effectively operate in forward and reverse.

**APPROVED MACHINES:** CTL, MTL, SAL, SSL, TC, TL



## TILLER

**Tear through clumps and hardened materials.**

- Bi-directional rotation allows top-cutting and under-cutting when operating in either direction.
- Offset mounting enables tilling beside sidewalks, curbs and buildings, increasing jobsite capabilities.
- Optional adjustable skid shoes deliver depth control at 2-, 4- or 6-inch depths.
- Hardened, double-edge tines break through materials to loosen soil.

**APPROVED MACHINES:** CTL, MTL, SAL, SSL, TC, TL



## TILT-TATCH™ ACCESSORY

**Get more work out of your Bobcat attachments.**

- Oscillate attachments 15 degrees left or right.
- Connects as an interface between carrier and non-hydraulic attachments.
- Controlled directly from operator's seat.
- Dig drainage ditches with the corner of a bucket, cut a level path on a hillside and more.

**APPROVED MACHINES:** CTL, SSL, TC



## TREE SPADE

**Quickly and efficiently dig and transplant trees.**

- Turn any loader into an efficient transplanting unit while cutting labor costs.
- Adjustable legs allow digging in five different root-ball sizes with one tree spade.
- Compact design offers operation in confined areas without damaging the landscape.
- Convertible valve allows operation with Bobcat loaders as well as other brands.

**APPROVED MACHINES:** CTL, SSL



## TRENCH COMPACTOR

**Done digging? Finish the job.**

- Compress the soil for a neatly packed trench.
- Large, wheel-type compactor compresses soil in the trench.
- Vibratory box offers optimum compaction in any soil type.
- Ideal for backyards, golf courses and parks.

**APPROVED MACHINES:** CTL, SSL

*NOTE: Not all attachments are approved for all compact loader models.*

**APPROVED MACHINES** | **CTL** Compact Track Loader **CT** Compact Tractor **MX** Compact Excavator **MTL** Mini Track Loader  
**SAL** Small Articulated Loader **SSL** Skid-Steer Loader **TC** Toolcat Utility Work Machine **TL** Telehandler





## TRENCHER

Cut a trench fast – even in demanding conditions.

- 2- to 5-foot dig depth across all models.
- Large-diameter auger moves material from the trench's side and limits soil from falling back in.
- Grease-cylinder tensioning quickly and easily adjusts the chain to the proper tension.
- Side-shift versatility allows you to dig close to jobsite obstacles.

APPROVED MACHINES: CTL, MX, MTL, SAL, SSL, TC



## UTILITY FORK

Handle bundled material, loose straw, manure and other hard-to-grab materials.

- Utility fork teeth are replaceable.
- For added versatility, pair with the utility grapple.

APPROVED MACHINES: CT, MTL, SAL, TC



## VIBRATORY PLOW

Work below the surface with minimal ground disturbance.

- Designed exclusively for MTLs.
- Ideal for installing pipe and cable with minimal ground disturbance.
- Achieve a knife-like slit that almost disappears as the machine drives over the cut.
- Coulter wheel cuts sod ahead of the plow blade while the pressure foot holds down sod and protects surrounding areas.

APPROVED MACHINES: MTL, SAL



## VIBRATORY ROLLER

Achieve superior compacting action.

- Hard-pack the ground in forward and reverse.
- Minimizes vibrations to reduce operator fatigue and achieve more comfortable working conditions.
- Padded drum compacts heavy soil, clay and clay-based backfill.
- Free-drum oscillation keeps more of the drum in contact with uneven terrain.

APPROVED MACHINES: CTL, SSL, MTL, TL



## WATER KIT

Control dust, dirt and debris levels.

- High-capacity tank volume minimizes refilling.
- Control water pump operation with a switch inside the carrier cab.
- Complements the angle broom, sweeper, planer and vibratory roller attachments.
- 14-gallon tank capacity.

APPROVED MACHINES: CTL, SSL



## WHEEL SAW

Deliver consistent, uniform cutting.

- Smoothly cut through asphalt, concrete, frozen ground, wire mesh and more.
- Hydraulic depth adjustment gauge delivers a consistent, uniform cut depth.
- Hydraulic side-shift shifts the attachment flush with any nearby object for a close cut.
- 6- to 24-inch trenching depth.

APPROVED MACHINES: CTL, SSL

NOTE: Not all attachments are approved for all compact loader models.

APPROVED MACHINES | CTL Compact Track Loader CT Compact Tractor MX Compact Excavator MTL Mini Track Loader  
SAL Small Articulated Loader SSL Skid-Steer Loader TC Toolcat Utility Work Machine TL Telehandler





**MINI TRACK LOADERS**

# THERE'S NOTHING MINI ABOUT THEIR PERFORMANCE.

**BOBCAT MINI TRACK LOADERS ARE THE  
RIGHT CHOICE FOR YOUR MANUAL TASKS.**

Easy-to-use mini track loaders travel and work where other machines can't, making them a popular choice for landscapers, contractors, rental stores and grounds maintenance crews. Don't be fooled by the small size – they do serious work, including digging, trenching, tilling, moving material and more.



**MT100**  
MINI TRACK LOADER





# REPLACE MANUAL LABOR BY TRAVELING AND WORKING WHERE OTHER MACHINES CAN'T.



## PERFORMANCE

### BIG MACHINE PERFORMANCE

Powered by Tier 4 diesel engines and efficient hydraulic systems, Bobcat® mini track loaders deliver fast cycle times, strong breakout force and excellent pushing ability.

### EASY OPERATION

One-hand drive operation on the MT55 makes it the easiest-to-operate model on the market. The ISO joystick controls on the MT100 make it simple and comfortable to maneuver the machine. Either is a great match for less experienced equipment operators, renters and seasonal help.

### MINIMAL GROUND DISTURBANCE

The rubber-track undercarriage distributes the machine's weight to reduce ground pressure and minimize damage to lawns and other established surfaces. Choose non-marking tracks to prevent marks on driveways and sidewalks.

## COMFORT

### OPERATE IN COMFORT.

A standard ride-on platform for the Bobcat MT100 mini track loader is more comfortable for operators working or traveling on a jobsite. An optional ride-on platform is available for the MT55.

## SERVICEABILITY

### TOOL-FREE ACCESS

Just open the hood to quickly check coolant, fuel, oil and hydraulic fluid levels. The MT100 undercarriage does not require greasing.

## VERSATILITY

### ULTRA-COMPACT SIZE

Only 36 inches wide when paired with a bucket, the smaller size allows it to squeeze through doorways and fence gates, and it's easy to load and transport on a trailer. With optional wide tracks, it's still only 41.1 inches wide, and you get a further reduction in ground pressure and an increase in flotation.

## KEY FEATURES OF THE MT100



### SEALED ROLLERS

The mini track loader's rollers are sealed and constantly bathed in oil for continuous lubrication. There's no need for daily roller maintenance.



### ERGONOMIC CONTROLS

Two ISO joystick controls provide operator comfort and convenience. The ergonomic controls help you change travel speed and direction with the flick of a wrist.



### REMOVABLE COUNTERWEIGHTS

Counterweights come standard on the MT100 to increase lifting performance on tough jobs. Counterweights can be mounted in the undercarriage or at the rear of the machine on the uprights.

# MINI TRACK LOADERS SPECIFICATIONS



	RATED OPERATING CAPACITY (ISO)	OPERATING WEIGHT WITH BUCKET	GROUND PRESSURE WITH RUBBER TRACKS	AUXILIARY HYDRAULIC FLOW	WIDTH WITH BUCKET	HEIGHT TO BUCKET HINGE PIN
<b>MT100</b> Ride-on	1000 lb. (453 kg)	3390 lb. (1537 kg)	5.2 psi (0.36 bar)	12.0 gpm (45.4 L/min.)	36.0 in. (914 mm)	80.9 in. (2056 mm)
<b>MT55</b> Ride-on or walk-behind	550 lb. (249 kg)	2610 lb. (1184 kg)	4.9 psi (0.34 bar)	12.0 gpm (45.4 L/min.)	36.0 in. (914 mm)	71.2 in. (1808 mm)

Contact your dealer or visit [Bobcat.com](http://Bobcat.com) to request a price quote today.

## MINI TRACK LOADERS TWO ATTACHMENT MOUNTING SYSTEMS

The well-known Bob-Tach® attachment mounting system supports a comprehensive selection of Bobcat-built attachments, including:



- Angle broom
- Attachment adapter plate
- Auger
- Backhoe (MT55 only)
- Boring unit
- Breaker
- Brushcat™ rotary cutter
- Bucket, construction/industrial
- Bucket, dirt
- Bucket, general purpose

- Bucket, trenching
- Bucket, utility
- Digger
- Grapple, industrial
- Grapple, log
- Grapple, root
- Grapple, utility
- Landplane
- Pallet fork
- Snowblower

- Snow blade
- Soil conditioner
- Stump grinder
- Sweeper
- Tiller
- Trencher
- Utility fork
- Vibratory plow

The common industry interface (CII) uses the smaller face plate and pin-on-style attachment connection solution. Attachments for the CII include:

- Auger
- Breaker
- Bucket, general purpose

- Pallet fork
- Trencher



**MT55**  
MINI TRACK LOADER





# FIT INSIDE THE BOUNDARIES. WORK BEYOND THE LIMITS.

**SMALL ARTICULATED LOADERS DELIVER BIG PERFORMANCE IN A SMALL PACKAGE.**

Small articulated loaders lift and handle heavy loads while providing precise maneuverability for navigating around obstacles. These nimble machines offer a light footprint for minimal damage to turf.





## SMALL ARTICULATED LOADERS FEATURES AND BENEFITS

# TAKE ON HEAVY LIFTING WITH A LIGHT FOOTPRINT.

### PERFORMANCE

#### TIGHT TURNING RADIUS

The articulation joint enables the rear tires of the loader to match the path of the front tires as they turn, resulting in a highly nimble machine that navigates in small work zones and around obstacles with ease.

#### MINIMAL GROUND DISTURBANCE

With its tight-turning articulated steering and light overall footprint, it limits cuts or tears in the turf when turning or hauling a load. This leads to fewer surface repairs after the job is done.

#### HIGH TRACTIVE EFFORT

During operation, the small articulated loader automatically enables one of two traction modes, High-Traction or Turf-Safe, based on operation. When the steering wheel is not turning, High-Traction mode provides excellent control and mobility over rough or slippery terrain. While actively steering, Turf-Safe mode keeps the wheels from scrubbing on the ground, causing the least possible ground disturbance.

#### HEAVY-LIFTING CAPABILITY IN A SMALL PACKAGE

It offers excellent operating capacity in a compact machine to enhance productivity on a wide range of jobsites.

### COMFORT

#### INTUITIVE TWIN-PEDAL TRAVEL CONTROLS

Easy for operators to master, this simple design provides easy control for seasonal and rental applications or inexperienced operators.

#### OPTIONAL ENCLOSED, HEATED CAB

Stay comfortable in cold and wet weather with the optional cab enclosure with heated seat. Add or remove window panels to further adapt with the season.

### SERVICEABILITY

#### STANDARD INSTRUMENTATION

The easy-to-read, backlit display panel provides operating information and critical machine errors and warnings.

#### EASY BATTERY TERMINAL ACCESS

For jumpstarts or charging a low battery, the readily accessible battery terminals save time and effort in getting your loader up and running.



**L23** SMALL ARTICULATED LOADER

**L28** SMALL ARTICULATED LOADER

*Models are shown with optional accessories.*



## SMALL ARTICULATED LOADERS SPECIFICATIONS



### EASY TO TRANSPORT

These machines are highly transportable and relatively lightweight, enabling you to quickly get your machine to the job and get to work.

### DUAL-CYLINDER TELESCOPING LIFT ARM

Get the reach you need with a lift arm that extends up to 24 inches. An innovative dual-cylinder design keeps the load level as you move the bucket. Available on L28.

## SMALL ARTICULATED LOADERS SPECIFICATIONS



	HORSEPOWER	RATED OPERATING CAPACITY STRAIGHT	RATED OPERATING CAPACITY ARTICULATED	OPERATING WEIGHT	AUXILIARY HYDRAULIC FLOW	TELESCOPE LENGTH	LIFT HEIGHT
<b>L28</b>	24.8 hp (18.5 kW)	1534 lb. (696 kg)	1222 lb. (554 kg)	4195 lb. (1903 kg)	12.1 gpm (45.8 L/min.)	24.0 in. (610 mm)	104.3 in. (2650 mm)
<b>L23</b>	24.8 hp (18.5 kW)	1395 lb. (633 kg)	1159 lb. (525 kg)	3790 lb. (1719 kg)	12.1 gpm (45.8 L/min.)	-	85.4 in. (2169 mm)

Contact your dealer or visit [Bobcat.com](http://Bobcat.com) to request a price quote today.

## SMALL ARTICULATED LOADERS ATTACHMENTS

The Bob-Tach® attachment mounting system accepts select mini track and standard Bobcat attachments. With the optional Power Bob-Tach system, you can change non-hydraulic attachments without leaving the comfort of your cab.



- Angle broom
- Auger
- Boring unit
- Breaker, hydraulic
- Breaker, nitrogen
- Brushcat™ rotary cutter
- Bucket, dirt
- Bucket, general purpose
- Bucket, utility
- Digger
- Dumping hopper
- Grapple, general purpose
- Grapple, industrial
- Grapple, log
- Grapple, root fork
- Grapple, utility
- Landplane
- Pallet fork
- Snow blade
- Snow v-blade
- Snowblower
- Soil conditioner
- Stump grinder
- Sweeper
- Tiller
- Trencher
- Utility fork
- Vibratory plow





# KEEP YOUR INDESTRUCTIBLE MACHINE **INDESTRUCTIBLE.**

You depend on your Bobcat® machine to show up in moments when other equipment just won't do. Make sure you're always ready to rise to the challenge by choosing **Bobcat service, parts and fluids.**

Bobcat is a Doosan company. Doosan is a global leader in construction equipment, power and water solutions, engines, and engineering, proudly serving customers and communities for more than a century. Bobcat®, the Bobcat logo and the colors of the Bobcat machine are registered trademarks of Bobcat Company in the United States and various other countries.  
©2021 Bobcat Company. All rights reserved.



# Bobcat®

[BOBCAT.COM](https://www.bobcat.com)





# TAKE THE WHEEL AND TAKE IT ON.



With high bucket capacity, swift travel speeds and impressive maneuverability, Bobcat® compact wheel loaders handle mountains of material. These durable machines deliver performance, comfort and versatility to power through tough jobs – even in tight spaces.



## COMPACT WHEEL LOADERS FEATURES AND BENEFITS



### PERFORMANCE



#### EXCELLENT PUSHING POWER

The compact wheel loader's electronic hydrostatic transmission and horsepower management work together to maximize pushing and loading power – and minimize stalling without sacrificing performance.

#### ADVANCED ATTACHMENT CONTROL MODE

With the advanced attachment control mode, you can control the engine and travel speed separately for full auxiliary hydraulic performance.



#### IMPRESSIVE LIFTING CAPABILITIES

For efficient lifting and loading, a Bobcat compact wheel loader is hard to beat. Standard bucket capacities of up to 1 cubic yard make fast work of tough material handling in landscaping, construction, agriculture and other industries.



**L65** COMPACT WHEEL LOADER



**L85** COMPACT WHEEL LOADER



# UNLEASH YOUR VERSATILITY.



## UPTIME

### NON-DPF TIER 4 SOLUTION

Tier 4 Bobcat engines in compact wheel loaders achieve emissions compliance without the use of a diesel particulate filter (DPF) or selective catalyst reduction (SCR).

### LOCKABLE ENGINE COVER

Keep the engine compartment securely latched on the job and prevent tampering or vandalism after hours.

## COMFORT

### COMFORTABLE RIDE

With low noise levels in the cab, smooth turning, frame oscillation and options like automatic ride control, the compact wheel loader provides an exceptional ride quality.

### SEAT-MOUNTED JOYSTICK WITH ADJUSTABLE ARMREST

As your suspension seat moves up and down, the joystick moves with the seat for added comfort and enhanced controllability during operation. Operators can adjust the joystick forward and backward to their preferred position.



## SERVICEABILITY

### EXPANSIVE SERVICE ACCESS

The wide tailgate opening with gas-assisted lift support gives you nearly 180 degrees of service access. Engine checkpoints are within easy reach – so routine maintenance is quick, simple and more likely to be completed by operators.

### CENTRALIZED GREASE POINTS

A centralized grease bank makes essential daily maintenance quick and easy.

# COMPACT WHEEL LOADERS SPECIFICATIONS



	HORSEPOWER	RATED OPERATING CAPACITY STRAIGHT BUCKET/ PALLET FORKS	RATED OPERATING CAPACITY ARTICULATED BUCKET/ PALLET FORKS	OPERATING WEIGHT	AUXILIARY HYDRAULIC STANDARD FLOW	AUXILIARY HYDRAULIC HIGH FLOW	HEIGHT TO HINGE PIN – FULLY RAISED
<b>L85</b>	68.0 hp (50.7 kW)	3974 lb. (1802 kg) 4786 lb. (2171 kg)*	3257 lb. (1478 kg) 3977 lb. (1804 kg)*	11,164 lb. (5064 kg)	19.8 gpm (74.9 L/min.)	27.3 gpm (103.5 L/min.)	127.9 in. (3250 mm)
<b>L65</b>	55.0 hp (41.0 kW)	3133 lb. (1421 kg) 3759 lb. (1705 kg)*	2618 lb. (1187 kg) 3172 lb. (1439 kg)*	9944 lb. (4510 kg)	19.8 gpm (74.9 L/min.)	–	126.9 in. (3225 mm)

\* Pallet forks rated with a 24.0 in. (610 mm) load center.

Contact your dealer or visit [Bobcat.com](http://Bobcat.com) to request a price quote today.

## VERSATILITY

### ATTACHMENT VERSATILITY

Bobcat attachments help you take on new jobs or get more use from one machine.

### STANDARD HIGH FLOW (L85)

The L85 comes standard with high-flow hydraulics that provide up to 27 gpm. This allows operators to maintain peak efficiency while operating approved hydraulic attachments.



## COMPACT WHEEL LOADERS ATTACHMENTS

- Angle broom
- Auger
- Bucket, combination
- Bucket, general purpose
- Bucket, light material
- Bucket, rock
- Industrial bucket grapple
- Landplane
- Pallet fork
- Snow blade
- Snow pusher
- Snow pusher pro
- Tiller







COMPACT TRACTORS

# DESIGNED FOR THE WAY YOU WORK AND LIVE



**CT2025** COMPACT TRACTOR





## COMPACT TRACTORS **FEATURES AND BENEFITS**

# TOUGH JOBS NEED A TOUGH TRACTOR.

With a comprehensive lineup of sub-compact and compact tractors, Bobcat brings its unmatched quality to your farm, ranch, acreage or business. Open up new possibilities and do more than ever with legendary Bobcat performance. You were born to accomplish more – and so was Bobcat.



### COMFORT

With smooth operation and intuitive controls, Bobcat® compact tractors are built tough, but operate simply and comfortably.

### PERFORMANCE

Choose from a full lineup of 15 sub-compact and compact tractors, ranging from 21 to 58 engine horsepower.

### VERSATILITY

With a standard 3-point hitch and a variety of powerful Bobcat attachments and implements, it's easy to get the most work out of your investment.

**NOTE:** 1000 platform machines come standard with a Category 1 Limited 3-point hitch.



**CT1025** COMPACT TRACTOR

**CT5558** COMPACT TRACTOR



# EVERYTHING YOU NEED FOR EVERYTHING YOU DO



## PERFORMANCE

### POWERFUL 3-POINT HITCH LIFT CAPACITY

Count on excellent 3-point hitch lift capacities to increase your implement capabilities and improve your performance.

### 3-POINT HITCH AND REAR PTO

The 3-point hitch enables you to do a large number of tasks on your property using both drawbar and PTO-powered implements.

### DRAWBAR TOWING POWER

The Bobcat compact tractor's drawbar delivers heavy towing performance. An adjustable hitch provides towing flexibility and convenience.

### STANDARD FOUR-WHEEL DRIVE

All Bobcat compact tractors come with standard four-wheel drive so you can easily power through tough terrain.

### TIGHT TURNING RADIUS

Bobcat compact tractors feature a tight turning radius – as little as 8 feet, depending on the model – so you can easily move and work close to trees, buildings and other obstacles.





## UPTIME

### HEAVY-DUTY BRUSH GUARD

As you maneuver through debris, branches and other obstacles, the brush guard protects your compact tractor's front end. It's included with the front-end loader and also available separately.

### METAL HOOD

The streamlined metal hood design improves visibility and reliably protects the engine and components from dirt and debris. Available on 2000, 4000 and 5000 platform models.

## COMFORT

### ENCLOSED CAB

A factory-installed, radio-ready enclosed cab with air conditioning and heat keeps you working comfortably in all kinds of weather.

### EXCELLENT VISIBILITY

The compact tractor offers a panoramic view with minimal obstruction and great rear visibility to monitor your implement.

### DELUXE SUSPENSION SEAT

The fully adjustable deluxe suspension seat, available on select models, absorbs vibration and bumps to maximize comfort.

### INTEGRATED LOADER JOYSTICK LEVER

Select models offer a cab-integrated joystick lever that's within easy reach for simple loader work. It's strategically positioned to maintain high visibility.



## SERVICEABILITY

### ONE-PIECE ENGINE HOOD WITH AIR-CYLINDER ASSIST

The hood is easy to lift thanks to the air-cylinder assist. When fully opened, the hood stands nearly perpendicular to the engine compartment (on select models).

### ONE-SIDE MAINTENANCE

All daily checks, engine fluid fills and filters are located on one side of the engine, making it easy to keep your tractor running smoothly with minimal effort. Available on select models.

## VERSATILITY

There's no limit to what you can accomplish with your front-end loader with standard quick-attach mounting system for a variety of attachments, plus a wide variety of available 3-point implements. See pages 68-70 for attachments and implements.



### THREE TIRE OPTIONS

Turf, industrial and agricultural tires offer a combination of reliability and ride quality to match the requirements of your work.



# CHOOSE FROM FOUR SIZE CLASSES.



## **1000 PLATFORM**

### **21-25 HP SUB-COMPACT TRACTORS**

#### **A GOOD CHOICE FOR SMALL ACREAGES**

Easy-to-use sub-compact tractors pack a lot of power into a small frame size to efficiently maneuver around barns and sheds on your small acreage. Larger than lawn or garden tractors, it offers a Limited Category 1 3-point hitch, mid and rear power take-off (PTO), hydrostatic transmission and standard four-wheel drive to make quick work of mowing, maintaining driveways year-round and other light-duty tasks.

## **2000 PLATFORM**

### **25-40 HP COMPACT TRACTORS**

#### **A GOOD CHOICE FOR ACREAGE OWNERS**

This popular size class of economical compact tractors is strong enough for big jobs but small enough to work in tight areas. Select machines offer a choice of transmission, either manual-shift or hydrostatic. Standard features include four-wheel drive, a Category 1 3-point hitch and rear PTO. Select models feature a heated and air-conditioned deluxe enclosed cab for year-round productivity.

# CHOOSE FROM FOUR TRANSMISSION TYPES.

## **MANUAL TRANSMISSIONS**

### **MANUAL 9X3 SHIFT TRANSMISSION**

This economical, reliable manual-shift transmission requires you to stop to change between nine forward gears and three reverse gears. It's the classic tractor transmission that many people remember from growing up on the farm. It works well for jobs that require a constant speed, such as mowing, tilling or spraying.

### **MANUAL 8X8 SYNCHRO SHUTTLE TRANSMISSION**

For shift-on-the-fly functionality that is similar to a stick-shift automobile, the two-range synchro shuttle transmission allows you to clutch and shift across eight forward and eight rear speeds. It provides ease of use if you prefer a manual transmission, and it delivers great performance when moving up and down fields or traveling longer distances in one direction.



Bobcat offers an extensive lineup of compact tractors in four platforms that vary in machine size, horsepower range and cab configurations.



## 4000 PLATFORM

### 45-58 HP COMPACT TRACTORS WITH OPEN CAB

#### A GOOD CHOICE FOR FARMS AND LANDSCAPING

These powerful compact tractors feature an open cab to make it easy to get on and off the tractor throughout the day when changing implements or loading materials. They offer four-wheel drive, a Category 1 3-point hitch and rear PTO for using a variety of powerful implements. Select models offer a choice of synchronized manual transmission for shift-on-the-fly functionality or hydrostatic transmission, a good choice for novice operators.

## 5000 PLATFORM

### 45-58 HP COMPACT TRACTORS WITH FULLY ENCLOSED CAB

#### A GOOD CHOICE FOR FARMS AND RANCHES

These fully equipped compact tractors deliver more horsepower and a premium factory-installed cab loaded with comfort features. Each model offers electronic hydrostatic transmission for the ultimate in simplicity, ease of direction change and near effortless input on the travel pedal. Standard features include four-wheel drive, a Category 1 3-point hitch and rear PTO to power implements.

Bobcat compact tractors offer a variety of transmission types depending on the model.

## HYDROSTATIC TRANSMISSIONS

### 2-RANGE AND 3-RANGE HYDROSTATIC TRANSMISSION

The hydrostatic transmission (HST) provides maximum ease of use and fast, simple direction changes, making it extremely effective for frequent front-end loader work, mowing or maneuvering in wooded areas while clearing brush. A simple twin-pedal design provides one pedal to move you forward; the other moves you in reverse. Its ease of operation also makes it a good choice for novice drivers.

### ELECTRONIC HYDROSTATIC TRANSMISSION (E-HST)

E-HST offers the simplicity and ease of direction change you get with HST – plus the electronic acceleration provides near-effortless input on the travel pedal to control your speed. It works like an automatic transmission in a car. It also includes cruise control to keep you moving at a constant speed.



# COMPACT TRACTORS SPECIFICATIONS



	HORSEPOWER	PTO HORSEPOWER	TRANSMISSION	3-POINT LIFT CAPACITY	WHEELBASE	OVERALL WIDTH (W/ INDUSTRIAL TIRES)	TURNING RADIUS
<b>5000 PLATFORM</b>							
<b>CT5558</b> Factory-installed cab	57.7 hp (43.0 kW)	48.3 hp (36.0 kW)	Infinite, 3-Range Electronic Hydrostatic	3177 lb. (1441 kg)	75.6 in. (1920 mm)	74.2 in. (1885 mm)	117.6 in. (2990 mm)
<b>CT5555</b> Factory-installed cab	55.0 hp (41.0 kW)	43.1 hp (32.1 kW)	Infinite, 3-Range Electronic Hydrostatic	3177 lb. (1441 kg)	75.6 in. (1920 mm)	74.2 in. (1885 mm)	117.6 in. (2990 mm)
<b>CT5550</b> Factory-installed cab	50.0 hp (37.5 kW)	38.9 hp (29.0 kW)	Infinite, 3-Range Electronic Hydrostatic	3177 lb. (1441 kg)	75.6 in. (1920 mm)	74.2 in. (1885 mm)	117.6 in. (2990 mm)
<b>CT5545</b> Factory-installed cab	45.0 hp (33.5 kW)	33.9 hp (25.3 kW)	Infinite, 3-Range Electronic Hydrostatic	3177 lb. (1441 kg)	75.6 in. (1920 mm)	74.2 in. (1885 mm)	117.6 in. (2990 mm)
<b>4000 PLATFORM</b>							
<b>CT4058</b> Roll-over protective structure	57.7 hp (43.0 kW)	45.1 hp (33.7 kW)	Infinite, 3-Range Hydrostatic	2716 lb. (1232 kg)	71.2 in. (1810 mm)	69.8 in. (1722 mm)	103.5 in. (2630 mm)
<b>CT4055</b> Roll-over protective structure	50.3 hp (37.3 kW)	49.6 hp (37.0 kW)	Synchro (8x8)	2716 lb. (1232 kg)	71.2 in. (1810 mm)	69.8 in. (1722 mm)	103.5 in. (2630 mm)
<b>CT4050</b> Roll-over protective structure	50.3 hp (37.3 kW)	39.3 hp (29.3 kW)	Infinite, 3-Range Hydrostatic (Opt. Synchro [8x8])	2716 lb. (1232 kg)	71.2 in. (1810 mm)	69.8 in. (1722 mm)	103.5 in. (2630 mm)
<b>CT4045</b> Roll-over protective structure	44.9 hp (33.5 kW)	32.8 hp (24.5 kW)	Infinite, 3-Range Hydrostatic (Opt. Synchro [8x8])	2716 lb. (1232 kg)	71.2 in. (1810 mm)	69.8 in. (1722 mm)	103.5 in. (2630 mm)



	HORSEPOWER	PTO HORSEPOWER	TRANSMISSION	3-POINT LIFT CAPACITY	WHEELBASE	OVERALL WIDTH (W/ INDUSTRIAL TIRES)	TURNING RADIUS
<b>2000 PLATFORM</b>							
<b>CT2540</b> Factory-installed cab	37.6 hp (28.0 kW)	31.9 hp (23.8 kW)	Infinite, 3-Range Hydrostatic	1631 lb. (740 kg)	65.7 in. (1670 mm)	63.0 in. (1600 mm)	106.2 in. (2700 mm)
<b>CT2040</b> Roll-over protective structure	39.6 hp (29.5 kW)	31.9 hp (23.8 kW)	Infinite, 3-Range Hydrostatic (Opt. Manual 9x3)	1631 lb. (740 kg)	65.7 in. (1670 mm)	63.4 in. (1610 mm)	96.5 in. (2450 mm)
<b>CT2535</b> Factory-installed cab	34.9 hp (26.0 kW)	29.4 hp (21.9 kW)	Infinite, 3-Range Hydrostatic	1631 lb. (740 kg)	65.7 in. (1670 mm)	63.0 in. (1600 mm)	106.2 in. (2700 mm)
<b>CT2035</b> Roll-over protective structure	34.9 hp (26.0 kW)	29.4 hp (21.9 kW)	Infinite, 3-Range Hydrostatic (Opt. Manual 9x3)	1631 lb. (740 kg)	65.7 in. (1670 mm)	63.4 in. (1610 mm)	96.5 in. (2450 mm)
<b>CT2025</b> Roll-over protective structure	24.5 hp (18.2 kW)	21.8 hp (16.3 kW)	Infinite, 3-Range Hydrostatic (Opt. Manual 9x3)	1631 lb. (740 kg)	65.7 in. (1670 mm)	63.4 in. (1610 mm)	96.5 in. (2450 mm)
<b>1000 PLATFORM</b>							
<b>CT1025</b> Roll-over protective structure	24.5 hp (18.3 kW)	18.8 hp (14.0 kW)	Infinite, 2-Range Hydrostatic	700 lb. (318 kg)	55.1 in. (1400 mm)	46.0 in. (1161 mm)	100.0 in. (2540 mm)
<b>CT1021</b> Roll-over protective structure	21.0 hp (15.7 kW)	16.3 hp (12.1 kW)	Infinite, 2-Range Hydrostatic	700 lb. (318 kg)	55.1 in. (1400 mm)	46.0 in. (1161 mm)	100.0 in. (2540 mm)

Contact your dealer or visit [Bobcat.com](http://Bobcat.com) to request a price quote today.



# DO MORE WITH ONE MACHINE.



## ANGLE BLADE

**Built with productivity in mind.**

- Reversible cutting edge.
- Blade angling and blade offset.
- Ideal for maintaining roads, removing snow and site landscaping applications.
- Available in 60-, 72- and 84-inch widths.



## AUGER

**Drill holes with plumb-line accuracy.**

- Equipped with Category 1 hitch pins and 2-inch diameter reinforced boom and yoke.
- 6-, 9- and 12-inch auger bits available.
- 20- to 60-hp tractor PTO requirements.



## REAR BALLAST BOX

**Maximize lifting capacities.**

- Easily removed when you plan to use other implements.
- Compact size enables convenient storage when not in use.



## ROTARY CUTTER

**Clear pastures, ditches and overgrown paths.**

- Ideal for clearing undeveloped property, trails and ditches.
- 1.5-inch to 9-inch adjustable cutting height.
- Available in 48-, 60- and 72-inch cutting widths.

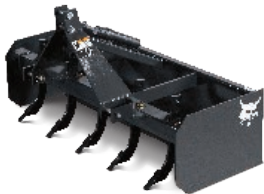


## SEEDER

**Easily plant seed at ideal depth and spacing.**

- Ground-driven unit seeds directly into the soil for better germination and accurate coverage.
- 4.0-bushel hopper capacity.

Hard-working Bobcat implements and attachments are made to get the most from your tractor investment.



### BOX BLADE

**Impressive leveling, backfilling and grading.**

- For rough grading and landscape applications.
- 4x4-inch mainframe.
- Two reversible high-carbon steel cutting edges.
- Available in 48-, 60- and 72-inch widths.



### FINISH MOWER

**Professional results in less time.**

- Rear discharge and solid rubber tires are standard.
- Three cutting blades.
- 1.5-inch to 4.5-inch cutting height.
- Available in 60- and 72-inch cutting widths.



### QUICK HITCH

**Connect implements in seconds.**

- Saves time and makes implement hook-up easier.
- Back up your tractor, lift up your quick-hitch-compatible implement and secure the top levers.



### SNOWBLOWER

**Powerful, productive and easy to operate.**

- Perfect for clearing driveways, sidewalks or parking lots.
- Manual chute rotator standard.
- Hydraulic chute rotator optional for tractors.
- Available in 50-, 60-, 66- and 74-inch widths.



### TILLER

**Easy and efficient soil preparation.**

- Break ground, prepare soil for planting, amend soil or remove weeds between tree rows.
- Forward or reverse rotation.
- Adjustable skid shoes for various working depths up to 7 inches.
- Available in 48-, 60- and 72-inch tilling widths.



### TINE RAKE

**Easily collects debris and levels soil.**

- Can be angled or reversed.
- High-carbon tines are individually replaceable for easy, low-cost maintenance.
- Available in 60-, 72- and 84-inch widths.

*NOTE: Not all attachments and implements are available for all compact tractor models.*



# COMPACT TRACTORS ATTACHMENTS AND IMPLEMENTS



## BACKHOE

Turn your tractor into a powerful excavator.

- General-purpose digging and trenching.
- Sub-frame included to attach to the rear of your compact tractor.
- Three models available ranging from 6.5 to 8 feet of dig depth.



## FRONT-END LOADER

Does the digging and hauling for you.

- Digging, moving dirt, loading and carrying material.
- Easy to attach and remove.
- Delivers leading lift capacity and height.
- Five models available.



## FRONT-MOUNT SNOWBLOWER

Direct power provided from the mid-PTO, offering easy operation of front-mount design.

- Two-stage blower design.
- Bolt-on/reversible cutting edge.
- Adjustable/replaceable skid shoes.
- Hydraulic chute rotator (standard).
- For clearing sidewalks, driveways, personal property and parking lots.
- Three models available.



## MID-MOUNT MOWER

Turn your compact tractor into a mowing powerhouse.

- Drive-over deck is easy to attach and remove.
- 60-inch cutting width.
- Standard side discharge and solid rubber tires.
- 1-inch to 4-inch height adjustment.

*NOTE: Not all attachments and implements are available for all compact tractor models.*



## New Brand Store

**10% DISCOUNT** on your first purchase.

[Bobcatstore.com](http://Bobcatstore.com)

Bobcat®, the Bobcat logo and the colors of the Bobcat machine are registered trademarks of Bobcat Company in the United States and various other countries. ©2021 Bobcat Company. All rights reserved.



Offer valid Jan. 1, 2022 - Jan. 1, 2023 Use code BOBCAT10 at checkout. (One time use, not valid with any other offer)



# WHATEVER YOU'RE UP AGAINST, **WE'RE IN.**

Your local Bobcat dealer is always there to help you solve your toughest challenges. If you have the will to bite off more than you can chew, we have the way to make it go down easy.

**We are Bobcat.**

Bobcat is a Doosan company. Doosan is a global leader in construction equipment, power and water solutions, engines, and engineering, proudly serving customers and communities for more than a century. Bobcat®, the Bobcat logo and the colors of the Bobcat machine are registered trademarks of Bobcat Company in the United States and various other countries.  
©2021 Bobcat Company. All rights reserved.



**Bobcat**®

[BOBCAT.COM](https://www.bobcat.com)





**ZERO-TURN MOWERS**

# OWN YOUR TURF WITH BOBCAT **ZERO-TURN MOWERS.**

## **MAKE YOUR MARK OF PERFECTION.**

This is your turf. Your work. Your reputation. Don't just defend it. Grow it. Maximize it. Make it all yours with Bobcat® zero-turn mowers. They offer rugged durability and innovative features that work harder, last longer and achieve a pristine quality of cut to give you a professional edge.



**ZT7000**  
ZERO-TURN  
MOWER

**FROM TOP TO BOTTOM, IT'S A CUT ABOVE.**





## ZERO-TURN MOWERS FEATURES AND BENEFITS

### RUGGED DURABILITY WITH THE TUFDECK PRO AND TUFDECK CUTTING SYSTEMS

#### TOUGH AND RELIABLE FOR A PERFECTLY MANICURED FINISH – EVERY TIME

- Steel-fabricated and cast-aluminum spindles for reliability (varies with model)
- Constructed with heavy-gauge fabricated steel
- Improved vacuum lift
- Easily replaceable, bolt-on front baffles

### SUPERIOR DISCHARGE WITH DURADECK CUTTING SYSTEMS

#### TOUGH ENOUGH TO HANDLE EVERYTHING COMMERCIAL JOBS DISH OUT

- Double-Wave™ bolt-on baffles to increase airflow throughout the deck
- Even clipping dispersal
- Adjustable front lip for optimized cutting on varying conditions and grass types (available on the ZS4000 36-inch mower)
- Steel-fabricated or cast-aluminum spindles (varies with model)



### OPTIMUM MOWING WITH BULLNOSE AIRFX CUTTING SYSTEMS

#### A FULL-SCALE SYSTEM DESIGNED TO KEEP YOU A CUT ABOVE THE REST

- Deeper profile for improved vacuum lift
- Newly engineered bolt-on, replaceable, patent pending Air-Gap baffles for more efficient airflow and enhanced serviceability
- Bullnose design stands grass up before it reaches the mower blades
- Steel-fabricated spindles for increased durability
- Even clipping dispersal
- Improved deck cleanliness
- Adjustable front lip for optimized cutting on varying conditions and grass types

## ZT7000 BUILT TO BOOST YOUR BOTTOM LINE



## PERFORMANCE

### COMMERCIAL-GRADE TRANSMISSION

Rugged Hydro-Gear® ZT-5400 hydrostatic transaxles feature a two-speed foot pedal for transport speeds up to 19 mph. Get maximum output torque with smooth, steady operation even at your fastest speeds.

Hydro-Gear is a registered trademark of Hydro-Gear Limited Partnership AF. Kawasaki is a registered trademark of KAWASAKI HEAVY INDUSTRIES, LTD.

### BULLNOSE AIRFX DECK

The 61- or 72-inch bullnose AirFX™ deck with Air-Gap baffles offers efficient airflow and superior vacuum lift, while rugged, steel-fabricated spindles assure reliable performance. A unique bullnose design stands grass up before it reaches the mower blades for an unmatched, quality cut.

## SERVICEABILITY

### SWING-AWAY BUMPER AND HITCH ATTACHMENT

The rotating bumper – with the additional hitch system included – offers fast access to internal components, making tune-ups more efficient.

## COMFORT

### COMFORT COMMAND CENTER

A deluxe suspension seat, almond-shaped handles and smooth, responsive controls provide intuitive operation.





**2000 HOURS** BUMPER TO BUMPER WARRANTY



**2000 HOURS** BUMPER TO BUMPER WARRANTY

**ZT6100** DESIGNED TO FUEL HOURS OF PROFITABLE MOWING

**ZT6000** DEPENDABLE RESULTS TO SATISFY YOUR TOUGHEST CUSTOMERS

**PERFORMANCE**

**POWERFUL ENGINE PERFORMANCE**

Kawasaki® FX series engine options, including FX850V and FX850V EFI, deliver dependable power and performance.

*Kawasaki is a registered trademark of KAWASAKI HEAVY INDUSTRIES, LTD. Vanguard® is a trademark of Briggs & Stratton Corporation.*

**BULLNOSE AIRFX DECK**

The deep-profile, 61-inch bullnose AirFX deck is equipped with rugged, steel-fabricated spindles and patent pending Air-Gap baffles. Delivers a premium, quality cut with innovative technology that lifts grass to the cutting blade for a cleaner cut.

**SERVICEABILITY**

**SWING-AWAY BUMPER AND HITCH ATTACHMENT**

The rotating bumper – with the additional hitch system included – offers fast access to internal components, making tune-ups more efficient.

**UPTIME**

**DURABLE FRAME**

The rectangular structural tubed frame provides maximum durability to mow through tough jobs and withstand just about anything.

**DUAL FUEL TANKS**

The 15-gallon-capacity dual fuel tanks keep operators at peak productivity.



**PERFORMANCE**

**BULLNOSE AIRFX DECK**

The deep-profile, 52- or 61-inch bullnose AirFX deck is equipped with rugged, steel-fabricated spindles and patent pending Air-Gap baffles. Lifts grass up so steel blades can cut it down for a cleaner cut and better lawn.

**UPTIME**

**DURABLE FRAME**

The rectangular structural tubed frame provides maximum durability to keep you out on the job and out of the shop.

**DUAL FUEL TANKS**

The 15-gallon-capacity dual fuel tanks keep operators at peak productivity.

**COMFORT**

**COMFORT COMMAND CENTER**

A deluxe suspension seat, almond-shaped handles and smooth, responsive controls provide intuitive operation.





**2000 HOURS** BUMPER TO BUMPER WARRANTY

**ZS4000** STANDS UP TO TOUGH OBSTACLES

**PERFORMANCE**

**POWERFUL ENGINE**

Equipped with the Kawasaki FX series or FT EFI series engine to efficiently power through the workday with capabilities that let you take on jobs of all sizes and demands – easily.

**BULLNOSE AIRFX DECK**

Heavy-duty 48-, 52- or 61-inch AirFX deck with Air-Gap baffles and bolt-on steel-fabricated spindles.\* Cut the toughest, tallest grass down to size with innovative technology that lifts grass to the cutting blade for a cleaner cut.

**COMFORT**

**OPERATOR-STATION DESIGN**

Operator-station design and in-frame fuel tank provide excellent “center of mass” stability. Easily traverse uneven ground with stand-on stability and agility. Maintain your ZS4000 with the easily removable operator pad.

**ANTI-VIBRATION PLATFORM**

Flip-up vibration-damped platform reduces vibration and fatigue for a smooth, comfortable ride. Or flip it up and use it as a walk-behind mower.

\*DuraDeck™ cutting system with cast aluminum spindles available on the 36-inch mower.



**1000 HOURS** BUMPER TO BUMPER WARRANTY

**ZT3500** COMMERCIAL-GRADE DURABILITY AT AN AFFORDABLE PRICE

**PERFORMANCE**

**HIGH-PERFORMANCE ENGINE**

The powerful Kawasaki FX series engine offers inexhaustible power to mow down any challenge with ease.

**QUICK GROUND SPEEDS**

Productive ground speeds up to 10 mph make quick work out of big jobs.

**STEEL-FABRICATED SPINDLE ASSEMBLIES**

Made tougher – from durable high-strength steel – to cut better.

**COMFORT**

**OPTIMAL USER COMFORT**

A high-backed mechanical suspension seat and ergonomic controls keep you comfortable all day long.

**ROBUST FUEL TANK**

The rugged, roto-molded, impact-resistant fuel tank offers a 7.8-gallon capacity. Get the job done without having to worry about refueling.





## ZERO-TURN MOWERS RESIDENTIAL



**1000 HOURS** BUMPER TO BUMPER WARRANTY



**500 HOURS** BUMPER TO BUMPER WARRANTY

### ZT3000 QUALITY CUT NO MATTER HOW MANY ACRES YOU MAINTAIN

#### PERFORMANCE

##### ENGINE BUILT FOR PERFORMANCE

The Kawasaki FT series engine provides reliable mowing power. Built for the pros and those who want to mow like them.

##### STEEL-FABRICATED SPINDLE ASSEMBLIES

Made tougher – from durable high-strength steel – to cut better.

#### UPTIME

##### ROBUST FUEL TANK

The rugged roto-molded, impact-resistant fuel tank offers a 3.8-gallon capacity. Get the job done without having to worry about refueling.

##### SOLID, TUBULAR FRAME

The 1.5 x 2.5-inch steel-tubed frame is lightweight and durable.

##### TOUGH MOWER DECK

48-, 52- or 61-inch TufDeck™ Pro cutting system features Double-Wave bolt-on baffles. Durability meets ingenuity in the mower deck design.



### ZT2000 DURABILITY AND PROFESSIONAL CUT AT AN AFFORDABLE PRICE

#### PERFORMANCE

##### ENGINE PERFORMANCE

Equipped with Kawasaki FR series engine for a powerful, pro-grade performance.

##### COMMERCIAL-CUTTING CAPABILITY

42-, 48- and 52-inch TufDeck cutting system has durable, steel-fabricated spindle assemblies.

#### UPTIME

##### ALL-DAY FUEL CAPACITY

Impact-resistant, 3.8-gallon-capacity fuel tank keeps you mowing.

##### STURDY STEEL FRAME

The 1.5 x 2.5-inch steel-tubed frame is lightweight and rugged.



# ZERO-TURN MOWERS SPECIFICATIONS

	ZT7000	ZT6100	ZT6000	ZS4000	ZT3500	ZT3000	ZT2000
Mulching Baffle Kit	61"	Std	Std	Std	Std	Std	Std
Eco Plate	Std	Std	Std	Std	Std	Std	Std
Grass Catcher: Poly-Dump, 3.75- or 5-Bushel	61"	Std	Std	Std	Std	Std	Std
Weight Kit	-	-	-	Std	-	-	-
Seat Suspension Kit	-	-	-	-	-	Std	Std
BOSS-Vac™ Pro 12-Bushel Collection System	61"	Std	Std	-	-	-	-
BOSS-Vac 8-Bushel Collection System	-	-	-	-	52", 61"	-	-
Deck Striping Kit	Std	Std	Std	48", 52", 61"	Std	Std	48", 52"
ZT Hitch Kit	-	-	Std	-	Std	Std	Std
No-Flat Caster Wheel Options	-	Std	Std	Std	Std	Std	Std
Magnetic Light Kit, 12V	Std	Std	Std	Std	Std	Std	Std
Light Kit, Footplate	-	Std	Std	-	-	-	-
ROPS Kit	-	-	-	-	-	Std	Std
ROPS Canopy Kit*	Std	Std	Std	-	Std	Std	Std

\*ROPS kit required.

	DECK	DECK WIDTH	FUEL CAPACITY	FORWARD SPEED	DRIVE WHEEL SIZE	SEAT
<b>COMMERCIAL</b>						
<b>ZT7000</b>	AirFX Cutting System	61.0 in. (1549 mm)	15.0 gal. (56.7 L)	19.0 mph (30.5 km/hr.)*	26 x 12-12	Extra-High Back, Full Mechanical Suspension Seat
<b>ZT6100</b>	AirFX Cutting System	61.0 in. (1549 mm)	15.0 gal. (56.7 L)	12.0 mph (19.3 km/hr.)	24 x 12-12	High Back, Full Mechanical Suspension Seat
<b>ZT6000</b>	AirFX Cutting System	61.0 in. (1541 mm)	15.0 gal. (56.7 L)	12.0 mph (19.3 km/hr.)	24 x 10.5-12	High Back, Full Mechanical Suspension Seat
<b>ZS4000</b>	AirFX Cutting System	52.0 in. (1320 mm)	6.5 gal. (24.6 L)	10.5 mph (16.8 km/hr.)	23 x 10.5-12	Platform – Flip Up & Latch
<b>RESIDENTIAL</b>						
<b>ZT3500</b>	TufDeck Pro Cutting System	52.0 in. (1320 mm)	7.8 gal. (29.5 L)	10.0 mph (16.0 km/hr.)	23 x 10.5-12	High Back, Full Mechanical Suspension Seat
<b>ZT3000</b>	TufDeck Pro Cutting System	52.0 in. (1320 mm)	3.8 gal. (14.3 L)	8.0 mph (12.8 km/hr.)	22 x 11-10	High Back, Spring Suspension Seat
<b>ZT2000</b>	TufDeck Cutting System	48.0 in. (1219 mm)	3.8 gal. (14.3 L)	7.0 mph (11.2 km/hr.)	20 x 10-10	High Back, Spring Suspension Seat

\*0-13 mph cutting; 13-19 mph transport

Additional models are available within each mower category. Visit [Bobcat.com](http://Bobcat.com) for details on all 21 mower models.





# A BOLD INVENTION REINVENTED

## ONE-OF-A-KIND AND REDESIGNED

With the best features of a pickup, compact tractor, skid-steer loader and utility vehicle, Bobcat designed Toolcat™ utility work machines for people who have a lot to do and need a lot of machine to get it done. Now, this do-it-all machine can do even more thanks to its redesigned all-LED lights, improved corrosion protection, overhauled dash with integrated 5-inch display, optional rearview camera and more. Take on whatever the day – or night – dishes out with a machine that’s in a league of its own.



**UW56**  
TOOLCAT UTILITY  
WORK MACHINE





# TOOLCAT UTILITY WORK MACHINES FEATURES AND BENEFITS



## PERFORMANCE

### REDESIGNED LIGHTING

The Toolcat utility work machine's lighting has been completely redesigned for optimum visibility in low-light working conditions and long-term durability.

### TOWING CAPACITY

Includes a standard 2-inch receiver hitch and a towing capacity of 4,000 pounds for moving trailers, boats and more. Hydrostatic braking and secondary multi-disc wet brakes let you tow with confidence.

### HYDROSTATIC FOUR-WHEEL DRIVE

Delivers maximum traction to power through snow or up an incline while minimizing turf damage and marks on asphalt or pavement.

## COMFORT

### UPDATED INTERIOR

Redesigned dash and comfort features include a USB port for charging mobile devices, larger tray for storage and deeper cup holders for tall beverages.

### RETOOLED OPERATOR-FRIENDLY FEATURES

Controls are updated for ergonomics, cleanly laid out and most importantly, simple to use. An updated drive response system with two drive modes and cruise control makes it easy to adjust between traveling and working.



### INTEGRATED 5-INCH DISPLAY

Provides machine interaction and monitoring capabilities, with detailed diagnostics and operation information that improve productivity and uptime.

### 360-DEGREE ADJUSTABLE VENTS

Provide maximum comfort and defrosting capabilities.

### OPTIONAL RADIO SYSTEM

Take your favorite music and radio programming with you on the job.

### OPTIONAL REAR CAMERA

Gives operators ideal visibility at the back of the machine for a variety of activities and tasks. A customizable mounting location on the UW56 gives you ideal camera placement for your preferred work applications.

## UPTIME PROTECTION

### BUILT BOBCAT TOUGH

Toolcat utility work machines are engineered to meet the same standards as the rest of the Bobcat® equipment lineup. Components are rigorously tested in a wide range of applications.

## VERSATILITY

### 45+ ATTACHMENTS

Pair your machine with more than 45 front-mounted attachments and get more work from your equipment investment.





# TOOLCAT UTILITY WORK MACHINES SPECIFICATIONS



	RATED OPERATING CAPACITY (ISO)	TRAVEL SPEED (HIGH)	AUXILIARY HYDRAULIC FLOW	HIGH-FLOW OPTION	CARGO BOX MAXIMUM LOAD	TURNING RADIUS (AWS)	TOWING CAPACITY	STORAGE BIN CAPACITY
<b>UW56</b> Operate more than 45 front-mounted attachments	4200 lb. (1905 kg)*	16.5 mph (26.5 km/hr.)	18.8 gpm (71.0 L/min.)	27.9 gpm (105.0 L/min.)	2000 lb. (907 kg)	134.6 in. (3419 mm)	4000 lb. (1814 kg)	—
<b>UW53</b> Operate both front-mounted attachments and rear-mounted implements	4200 lb. (1905 kg)*	16.5 mph (26.5 km/hr.)	18.8 gpm (71.0 L/min.)	27.9 gpm (105.0 L/min.)	—	134.6 in. (3419 mm)	4000 lb. (1814 kg)	50 lb. (22 kg)

\*Combined weight of load on lift arm, cargo box load, operator and passenger, and tow weight if equipped with a hitch.

Contact your dealer or visit [Bobcat.com](http://Bobcat.com) to request a price quote today.

## 3-POINT HITCH AND PTO

Unlock even more capability in the Toolcat UW53, which comes standard with a 3-point hitch and power take-off that enables you to use a wide variety of 3-point implements.

## HIGH-FLOW HYDRAULICS

Get more performance for jobs requiring high power, like stump grinding, blowing snow and digging postholes. It's standard-equipped on the UW53 and available as an option on the UW56.

## COMPLETE HUNDREDS OF JOBS AND CUT DOWN ON MANUAL LABOR.



### APPROVED ATTACHMENTS

- Angle broom
- Auger
- Bale fork
- Box blade
- Brushcat™ rotary cutter
- Bucket, combination
- Bucket, general purpose
- Bucket, rock
- Bucket, snow and light material
- Chipper
- Dozer blade
- Dumping hopper
- Flail cutter
- Grader
- Grapple, industrial
- Grapple, utility
- Landplane
- Landscape rake
- Mower
- Pallet fork
- Scraper
- Seeder
- Snow blade
- Snow pusher
- Snow v-blade
- Snowblower
- Sod layer
- Soil conditioner
- Spreader
- Stump grinder
- Sweeper
- Tiller
- Tilt-Tatch™ accessory
- Trencher
- Utility fork

### APPROVED IMPLEMENTS FOR UW53

- 3-point angle blade
- 3-point auger
- 3-point box blade
- 3-point finish mower
- 3-point hitch adapter
- 3-point quick hitch
- 3-point rotary cutter
- 3-point seeder
- 3-point snowblower
- 3-point tiller
- 3-point tine rake



**UW53**  
TOOLCAT UTILITY WORK MACHINE





# GET THE TOUGH JOBS OFF THE GROUND.

**BOBCAT TELEHANDLERS  
EXTEND YOUR CAPABILITIES.**

Bobcat® telehandlers are made to reach high and stack fast – as well as backfill, push and dig – with unparalleled precision and performance. Their lift height, reach and capacity, along with a heavy-duty telescoping boom, help you easily handle the most difficult jobs.





# GET UNMATCHED VERSATILITY WITH A WIDE RANGE OF ATTACHMENTS.

**V923** TELEHANDLER



## COMFORT

### UNMATCHED VISIBILITY

The low-profile boom sits below the operator's eye level to allow an optimal view of your surroundings.

### OPERATOR-FRIENDLY CONTROLS

The joystick controls allow you to control several functions, including travel direction, lift and tilt functions, boom extension, and auxiliary hydraulics – putting more control in your hands.

### REDESIGNED CAB (TL619)

A redesigned cab surrounds operators in greater comfort while housing innovative controls that make it easier to take command of challenging jobs.

## UPTIME

### ENGINE PROTECTION

A thick steel frame covers both sides and the bottom of the engine. Rubber engine mounts reduce shock on difficult terrain. A liquid cooling system that features enhanced airflow also protects from overheating. A completely enclosed environment helps shut out dust and debris, ensuring long component life.

### AUTOMATIC REVERSING FAN

The fan helps keep the radiator area cleaner longer – extending productivity and uptime while reducing the immediate need to clean debris by hand.

## VERSATILITY

### BOOM FLOAT

Enable the boom float on the TL619 or V923 for smooth attachment performance while moving on uneven ground. Float in reverse for finish grading with a bucket.

### V723 AND V923 POWER QUICK-TACH SYSTEM

Push a button to quickly swap non-hydraulic attachments without even leaving the cab.

## PERFORMANCE

### AUTOMATIC TILT LEVELING

The auto-level feature speeds material handling and boosts productivity by preventing spillage and ensuring consistent attachment performance as the telescopic boom is rising and lowering.

### TWO-STAGE, LOW-PROFILE BOOM

The low-profile, telescopic boom gives you the power to access a wide range of lift heights and reach lengths. The boom's low mount and rear pivot position provide superior digging ability – as the machine pushes, more weight stays on the front axle.

### ADVANCED ATTACHMENT CONTROL MODE (TL619)

Control the engine rpm and travel speed separately and gain precise control of machine movement while maintaining full auxiliary hydraulic performance for attachments.

### MAX. RATED CAPACITY

Confidently lift up to 5,500 pounds in the TL619, 7,700 pounds in the V723 and 9,000 pounds in the V923.

## TELEHANDLERS SPECIFICATIONS



**V723** TELEHANDLER

**TL619** TELEHANDLER

	HORSEPOWER	OPERATING WEIGHT	RATED LIFT CAPACITY	MAX. LIFT HEIGHT	MAX. LOAD FULL HEIGHT	AUXILIARY HYDRAULIC FLOW
<b>V923</b>	130.0 hp (97.0 kW)	18,158 lb. (8235 kg)	9000 lb. (4100 kg)	276.9 in. (7033 mm)	7000 lb. (3175 kg)	39.6 gpm (149.9 L/min.)
<b>V723</b>	100.0 hp (74.5 kW)	17,155 lb. (7781 kg)	7700 lb. (3492 kg)	273.9 in. (6957 mm)	7700 lb. (3492 kg)	26.4 gpm (99.9 L/min.)
<b>NEW TL619</b>	74.0 hp (55.2 kW)	11,089 lb. (5029 kg)	5512 lb. (2500 kg)	230.0 in. (5842 mm)	5512 lb. (2500 kg)	21.0 gpm (79.4 L/min.)

Contact your dealer or visit [Bobcat.com](http://Bobcat.com) to request a price quote today.

## TELEHANDLERS ATTACHMENTS

### TL619 APPROVED ATTACHMENTS:

- Angle broom
- Auger
- Bucket
- Combination bucket
- Flail cutter
- Grapple, industrial
- Grapple, root
- Pallet fork, fixed
- Pallet fork, floating
- Rock bucket
- Snow blade
- Snow pusher pro
- Soil conditioner
- Sweeper
- Truss boom



### V723 AND V923 APPROVED ATTACHMENTS:

- Adapter frame
- Bucket
- Grapple, ag
- Pallet fork, fixed
- Pallet fork, floating





# ALL-OUT PERFORMANCE FOR WHEN YOU'RE **ALL ABOUT THE WORK**

**BOBCAT UTILITY VEHICLES ARE DESIGNED TO RIDE  
OUT THE MOST CHALLENGING CONDITIONS.**

With industry-leading specs, proven durability and comfort features that the hardest-working operators deserve, Bobcat® utility vehicles deliver reliable productivity and performance every day.



**UV34**  
UTILITY  
VEHICLE





# UTILITY VEHICLES FEATURES, BENEFITS AND SPECIFICATIONS

## HIGH PERFORMANCE FOR CHALLENGING CONDITIONS AND TIGHT SPACES

### PERFORMANCE

#### TOUGH CHASSIS AND SUSPENSION

A strong, rigid chassis and heavy-duty driveline components ensure better work performance, more durability and increased towing capacity, along with higher ground clearance. Greater range of motion in the suspension provides superior ride quality, too.

#### HEAVY-DUTY CLUTCH

Optimal belt engagement minimizes slippage and extends service intervals.

#### PROVEN DIESEL ENGINE

Experience the power of the same diesel engine that has been powering Bobcat mini track loaders for years. A proven record of performance and reliability ensures you can count on your utility vehicle every day for your toughest jobs.

#### LEADING PAYLOAD AND TOWING

Hitch and haul bigger loads with the highest payload and tow ratings of nearly any brand.

### UPTIME PROTECTION

#### FAST AND EASY MAINTENANCE

Check the oil without having to raise the cargo box. Fewer grease points and easier access to coolant, air, oil and fuel filters help reduce time spent servicing your machine.



### COMFORT

#### COMFORTABLE CAB

The low and wide cab opening, comfortable seat, three-point seat belt with comfort strap, tilt steering and more legroom make every minute of your workday more enjoyable.

#### INSTRUMENTATION

Enjoy intuitive operation with power steering and responsive control, even when loaded with cargo or towing heavy trailers. Ergonomically designed instrumentation and controls plus large gauges that provide great visibility further enhance your experience.

### VERSATILITY

#### COMPOSITE CARGO BOX

With 15.6 cubic feet of storage space, it's one of the largest in its class. A rock-solid, one-piece composite material design resists dents, scratches, rust and corrosion.

## UTILITY VEHICLES SPECIFICATIONS



	OPERATING WEIGHT	TRAVEL SPEED (HIGH)	CARGO BOX LOAD CAPACITY	TOTAL VEHICLE RATED CAPACITY	TURNING RADIUS (AWS)	HORSEPOWER
<b>UV34XL</b> Diesel/Gas	2165 lb. (982 kg) 2085 lb. (945 kg)	35.0 mph (56.3 km/hr.)	1250 lb. (567 kg)	2075 lb. (941 kg)*	154.0 in. (3911 mm)	24.5 hp (18.2 kW) 39.9 hp (29.7 kW)
<b>UV34</b> Diesel/Gas	1935 lb. (878 kg) 1855 lb. (841 kg)	35.0 mph (56.3 km/hr.)	1250 lb. (567 kg)	1900 lb. (862 kg)*	112.2 in. (2850 mm)	24.5 hp (18.2 kW) 39.9 hp (29.7 kW)

\*Total vehicle rated capacity is the combined weight of passengers, cargo box load and accessories, on level surface only.

Contact your dealer or visit [Bobcat.com](http://Bobcat.com) to request a price quote today.





# RELY ON YOUR BOBCAT DEALER FOR DEPENDABLE PERFORMANCE.

Routine service and maintenance are essential for protecting your machine's performance. With more than 60 years of leadership in the compact equipment industry – and hundreds of authorized dealer locations across North America – Bobcat can assure you of quality service and unrivaled parts availability, no matter where the machine is located or when a problem arises.



## IDENTIFY ISSUES AND PREVENT DOWNTIME.

The BobCHECK<sup>SM</sup> multi-point inspection is designed to find potential problems at the earliest stage – so you can address them before they result in unplanned service and downtime for your Bobcat<sup>®</sup> equipment. During the inspection, your dealer takes a thorough look at routine maintenance items:

- Powertrain
- Engine
- Hydraulics
- Hydrostatic and electrical systems
- Machine's general condition

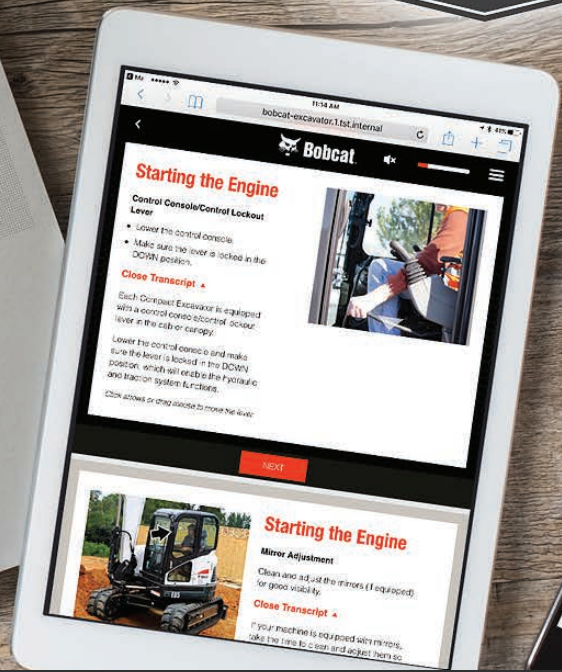
## PEACE OF MIND, BACKED BY BOBCAT

For a small investment, Protection Plus<sup>®</sup> extended warranty provides additional coverage that goes far beyond the standard warranty. You may purchase the Protection Plus extended warranty anytime during your machine's full standard warranty period. It's available for new, never-before-sold Bobcat compact track loaders, skid-steer loaders, mini track loaders, compact wheel loaders, compact excavators, large excavators, compact tractors, Toolcat<sup>™</sup> utility work machines, telehandlers and small articulated loaders.

## DID YOU KNOW?

- More than 750 Bobcat dealers located in the United States and Canada have skilled service technicians and knowledgeable parts representatives who maintain and repair equipment daily.
- Bobcat dealers stock genuine Bobcat parts for repairs, which are backed by a Bobcat warranty, as well as Bobcat-approved oils, grease and other lubricants.
- You can search for parts on the Bobcat online parts catalog or order parts by visiting the Bobcat Parts store at [BobcatPartsOnline.com](http://BobcatPartsOnline.com)





# SAFETY TRAINING COURSES

ACCESS CONVENIENT, MOBILE-FRIENDLY ONLINE COURSES:  
[BOBCAT.COM/TRAINING](http://BOBCAT.COM/TRAINING)

Effective operator training is critical for an efficient and safe work environment. Trained operators are better operators; proper training helps protect operators, crews, equipment and your bottom line. It can also help you meet OSHA and other training requirements.

At Bobcat, safety and training are top priorities. It's easy to take advantage of online training courses that offer the following benefits:

## MOBILE ACCESSIBILITY

Operators can access training 24/7 at work, home, or in the field via tablet or mobile device.

## MULTI-COURSE LEARNING

Individual subscriptions and multi-course packages are available for skid-steer and compact track loaders, compact excavators, compact tractors, Toolcat utility work machines, and loader radio remote control. Free safety videos are also available.

## SPANISH LANGUAGE ACCESSIBILITY

Operators can learn in their preferred language.

## INTERACTIVE, SELF-LED AND SELF-PACED COURSEWORK

Operators can work at their own pace and come back to coursework when it's convenient. Users have access to courses for one year.

## DIGITAL WALLET

After completing a course, operators will receive a certificate validating course completion, which they can store as a paperless copy on their device.

## UPGRADED COURSE CONTENT

New courses are added regularly and made available at [Bobcat.com/training](http://Bobcat.com/training)

You chose the best by purchasing Bobcat equipment. Now help develop the best operators by offering effective, valuable training. We make it easy.

For more details on safety training from Bobcat, visit [Bobcat.com/training](http://Bobcat.com/training)



# YOU HAVE THE WILL. WE PROVIDE THE WAY.

What's your next challenge? You'll find the way to tackle it – and tackle countless other tasks – in the 2022 BobCatalog. It's your comprehensive reference to the full spectrum of Bobcat® equipment, including our growing lineup of tools for grounds maintenance, agriculture, construction and more. Crack it open, call your dealer and unleash a world of productivity and possibility.



## Bobcat®

Certain specification(s) are based on engineering calculations and are not actual measurements. Specification(s) are provided for comparison purposes only and are subject to change without notice. Specification(s) for your individual Bobcat equipment will vary based on normal variations in design, manufacturing, operating conditions, and other factors.

Bobcat is a Doosan company. Doosan is a global leader in construction equipment, power and water solutions, engines, and engineering, proudly serving customers and communities for more than a century.

Bobcat®, the Bobcat logo and the colors of the Bobcat machine are registered trademarks of Bobcat Company in the United States and various other countries.  
©2021 Bobcat Company. All rights reserved.

## MOWERS



Model	ZT2000	ZT3000	ZT3500	ZS4000	ZT6000	ZT6100	ZT7000
<b>Engine</b>							
Engine Type	Kaw FR651V	Kaw FT691V	Kaw FX691V	Kaw FT30V EFI	Kaw FX801V	Kaw FX850V	Kaw FX1000V
Displacement cu. in. (L)	44.3 (726)	44.3 (726)	44.3 (726)	44.3 (726)	52.0 (852)	52.0 (852)	60.9 (999)
Fuel Tank gal. (L)	3.8 (14.3)	3.8 (14.3)	7.8 (29.5)	6.5 (24.6)	15.0 (56.7)	15.0 (56.7)	15.0 (56.7)
<b>Deck</b>							
Mower Deck	TufDeck™ Cutting System	TufDeck Pro Cutting System	TufDeck Pro Cutting System	AirFX™ Cutting System	AirFX Cutting System	AirFX Cutting System	AirFX Cutting System
Width in. (mm)	48.0 (1219)	52.0 (1320)	52.0 (1320)	52.0 (1320)	61.0 (1549)	61.0 (1549)	61.0 (1549)
Cutting Height in. (mm)	1.5-4.8 (38-121)	1.5-4.8 (38-121)	1.5-4.8 (38-121)	1.5-4.5 (38-114)	1.0-5.5 (25-139)	1.0-5.5 (25-139)	1.0-5.5 (25-139)
Clutch lbf. (N)	105 (556)	125 (556)	125 (556)	200 (889)	225 (1000)	225 (1000)	250 (1112)
Blade Tip Speed @ 3550 Engine rpm	17,365 fpm	18,142 fpm	18,142 fpm	18,586 fpm	18,500 fpm	18,500 fpm	18,500 fpm
Discharge Chute	Flexible Molded Polymer	Flexible Molded Polymer	Flexible Molded Polymer	Flexible Molded Polymer	Flexible Molded Polymer	Flexible Molded Polymer	Flexible Molded Polymer
<b>Frame</b>							
Front and Rear	1.5- x 2.5-inch Steel Tubing; Welded Steel Reinforced Frame	1.5- x 2.5-inch Steel Tubing; Welded Steel Reinforced Frame	1.5- x 2.5-inch Steel Tubing; Welded Steel Reinforced Frame	1.5- x 2.5-inch Steel Tubing; Welded Steel Reinforced Frame	1.5- x 2.5-inch Steel Tubing; Welded Steel Reinforced Frame	1.5- x 2.5-inch Steel Tubing; Welded Steel Reinforced Frame	1.5- x 2.5-inch Steel Tubing; Welded Steel Reinforced Frame
Machine Length in. (mm)	76.0 (1930)	76.0 (1930)	76.0 (1930)	64.0 (1625)	83.0 (2108)	83.0 (2108)	87.0 (2209)
Machine Weight (wet) lb. (kg)	736 (334)	774 (351)	789 (358)	991 (358)	1421 (645)	1464 (664)	1500 (680)
<b>Transmission</b>							
Type	HG ZT-2800 Hydrostatic Transaxles	HG ZT-3100 Hydrostatic Transaxles	HG ZT-3400 Hydrostatic Transaxles	HG ZT-3400 Hydrostatic Transaxles	HG ZT-4400 Hydrostatic Transaxles	HG ZT-4400 Hydrostatic Transaxles	HG ZT-5400 2-Speed Hydrostatic Transaxles
Oil Capacity gal. (qt)	1.0 (4.0)	1.0 (4.0)	1.0 (4.0)	1.0 (4.0)	1.1 (4.4)	1.1 (4.4)	1.4 (5.6)
Forward Speed mph (km/hr.)	7.0 (11.2)	8.0 (12.8)	10.0 (16.0)	10.5 (16.8)	12.0 (19.3)	12.0 (19.3)	19.0 (30.5)*
Reverse Speed mph (km/hr.)	3.0 (4.8)	3.5 (5.6)	3.5 (5.6)	3.5 (5.6)	4.0 (6.4)	4.0 (6.4)	7.5 (12.0)**
<b>Wheels</b>							
Rear	20 x 10-10	22 x 11-10	23 x 10.5-12	23 x 10.5-12	24 x 10.5-12	24 x 12-12	26 x 12-12
Front	11 x 6-5	13 x 6.5-6	13 x 6.5-6	13 x 6.5-6	13 x 6.5-6	13 x 6.5-6	15 x 6.5-6 No-Flat
<b>Operator Platform</b>							
Seat	High Back, Spring Suspension Seat	High Back, Spring Suspension Seat	High Back, Full Mechanical Suspension Seat	Platform - Flip Up & Latch	High Back, Full Mechanical Suspension Seat	High Back, Full Mechanical Suspension Seat	Extra-High Back, Full Mechanical Suspension Seat
Fore-Aft Adjust	Seat Slide Lever	Seat Slide Lever	Seat Slide Lever	Removable for Service	Seat Slide Lever	Seat Slide Lever	Seat Slide Lever
<b>Warranty</b>							
	3-year/500-hour	3-year/1000-hour	3-year/1000-hour	3-year/2000-hour	3-year/2000-hour	3-year/2000-hour	3-year/2000-hour

\*10-13.0 mph cutting, 13.0-19.0 mph transport

\*\*5.0-7.5 mph transport

Additional models are available within each mower category. Visit [Bobcat.com](http://Bobcat.com) for details on all 21 mower models.



## UTILITY VEHICLES

Model	UV34 Diesel	UV34XL Diesel	UV34 Gas	UV34XL Gas
<b>Engine</b>				
Horsepower hp (kW)	24.5 (18.2)	24.5 (18.2)	39.9 (29.7)	39.9 (29.7)
Displacement cu. in. (L)	55.0 (899)	55.0 (899)	61.0 (999)	61.0 (999)
<b>Performance</b>				
Total Vehicle Rated Capacity lb. (kg)**	1900 (862)	2075 (941)	1900 (862)	2075 (941)
Towing Capacity lb. (kg)	2500 (1134)	2500 (1134)	2500 (1134)	2500 (1134)
Cargo Box Load Capacity lb. (kg)	1250 (567)	1250 (567)	1250 (567)	1250 (567)
Travel Speed (high)* mph (km/hr.)	35.0 (56.3)	35.0 (56.3)	35.0 (56.3)	35.0 (56.3)
Travel Speed (reverse) mph (km/hr.)	16.0 (25.0)	16.0 (25.0)	25.0 (40.0)	25.0 (40.0)
Turn Radius in. (mm)	112.2 (2850)	154.0 (3911)	112.2 (2850)	154.0 (3911)
<b>Dimensions</b>				
Length in. (mm)	123.0 (3124)	155.0 (3937)	123.0 (3124)	155.0 (3937)
Width in. (mm)	62.0 (1575)	62.0 (1575)	62.0 (1575)	62.0 (1575)
Height in. (mm)	76.0 (1930)	76.0 (1930)	76.0 (1930)	76.0 (1930)
Cargo Box Height in. (mm)	11.5 (292)	11.5 (292)	11.5 (292)	11.5 (292)
Cargo Box Width in. (mm)	54.0 (1372)	54.0 (1372)	54.0 (1372)	54.0 (1372)
Ground Clearance in. (mm)	11.7 (296)	11.7 (296)	11.7 (296)	11.7 (296)
Wheelbase in. (mm)	85.0 (2159)	117.0 (2972)	85.0 (2159)	117.0 (2972)
Operating Weight lb. (kg)	1935 (878)	2165 (982)	1855 (841)	2085 (945)

\* Change the top speed of any gas vehicle in increments of 5 mph from 15 mph through 35 mph. 40 mph speed kit available through aftermarket parts. Diesel vehicles can be limited to 25 mph or 15 mph with a speed-limiting kit.

\*\*Total vehicle rated capacity: combined weight of cargo box load, operator, passenger and tow weight if equipped with hitch.



## TOOLCAT™ UTILITY WORK MACHINES

Model	UW53	UW56
<b>Engine</b>		
Engine Type	Diesel	Diesel
Horsepower hp (kW)	61.0 (45.5)	61.0 (45.5)
<b>Performance</b>		
Operating Weight lb. (kg)	5710 (2590)	5680 (2576)
Machine Rated Capacity lb. (kg)*	2200 (998)	2200 (998)
Total Vehicle Rated Capacity lb. (kg) **	4200 (1905)	4200 (1905)
Towing Capacity lb. (kg)	4000 (1814)	4000 (1814)
Travel Speed (low) mph (km/hr.)	8.0 (12.9)	8.0 (12.9)
Travel Speed (high) mph (km/hr.)	16.5 (26.5)	16.5 (26.5)
Travel Speed (reverse) mph (km/hr.)	8.0 (12.9)	8.0 (12.9)
<b>Dimensions</b>		
Length With Bucket in. (mm)	181.0 (4597)	172.1 (4372)
Width Without Bucket in. (mm)	60.0 (1524)	60.0 (1524)
Height in. (mm)	81.0 (2057)	81.0 (2057)
Turning Radius (AWS) in. (mm)	134.6 (3419)	134.6 (3419)
<b>Attachment Systems</b>		
Rated Operating Capacity (ISO) lb. (kg)	1500 (680)	1500 (680)
Lift Height (pivot pin) in. (mm)	83.3 (2116)	83.3 (2116)
Auxiliary Hydraulic Flow gpm (L/min.)	18.8 (71.0)	18.8 (71.0)
High-Flow Option gpm (L/min.)	27.9 (105.0)	27.9 (105.0)
<b>Capacities (cargo box and machine)</b>		
Cargo Box Volume cu. ft. (m³)	-	18 (0.5)
Cargo Box Dimensions (L x W x H) in. (mm)	-	56.0 x 51.0 x 10.0 (1422 x 1295 x 254)
Box Height (from ground) in. (mm)	-	38.2 (970)
Cargo Box Max. Load lb. (kg)	-	2000 (907)
<b>3-Point Hitch</b>		
3-Point Hitch Capacity lb. (kg)	1775 lb. (806 kg)	-
PTO Horsepower hp (kW)	25.0 (18.6)	-
Storage Bin Capacity (each) lb. (kg)	50 (22)	-

\*Machine rated capacity: combined weight of load on lift arm, cargo box load, operator and passenger.

\*\*Total vehicle rated capacity: combined weight of load on lift arm, cargo box load, operator, passenger and tow weight if equipped with a hitch.

# 2022 BOBCAT EQUIPMENT SPECIFICATIONS

For more information, see your local  
Bobcat dealer or go to [Bobcat.com](http://Bobcat.com)



## SMALL ARTICULATED LOADERS

Model	L23	L28
<b>Engine</b>		
Engine Type	Diesel	Diesel
Horsepower hp (kW)	24.8 (18.5)	24.8 (18.5)
<b>Performance</b>		
Rated Operating Capacity Straight lb. (kg)	1395 (633)	1534 (696)
Rated Operating Capacity Articulated lb. (kg)	1159 (525)	1222 (554)
Auxiliary Hydraulic Flow gpm (L/min.)	12.1 (45.8)	12.1 (45.8)
Travel Speed mph (km/hr.)	8.2 (13.2)	8.3 (13.4)
Operating Weight lb. (kg)	3790 (1719)	4195 (1903)
Bob-Tach® Attachment Mounting System	Std	Std
<b>Dimensions</b>		
Length With Bucket in. (mm)	122.4 (3109)	122.4 (3109)
Width in. (mm)	43.2 (1097)	46.5 (1181)
Height With Cab in. (mm)	78.1 (1983)	78.1 (1983)
Wheelbase in. (mm)	47.2 (1199)	47.2 (1199)
Height to Bucket Hinge Pin in. (mm)	85.4 (2169)	(Extended) 104.3 (2650)



## COMPACT WHEEL LOADERS

Model	L65	L85
<b>Engine</b>		
Engine Type	Turbo Diesel	Turbo Diesel
Horsepower hp (kW)	55.0 (41.0)	68.0 (50.7)
<b>Performance</b>		
Rated Operating Capacity Straight Bucket lb. (kg)	3133 (1421)	3974 (1802)
Rated Operating Capacity Pallet Fork lb. (kg)	3759 (1705)	4786 (2171)
Rated Operating Capacity Articulated Bucket lb. (kg)	2618 (1187)	3257 (1478)
Rated Operating Capacity Articulated Pallet Forks lb. (kg)	3172 (1439)	3977 (1804)
Auxiliary Hydraulic Flow gpm (L/min.)	19.8 (74.9)	19.8 (74.9)
Auxiliary High Flow gpm (L/min.)	–	27.3 (103.5)
Travel Speed mph (km/hr.)	16.6 (26.7)	18.5 (29.8)
Operating Weight lb. (kg)	9944 (4510)	11,164 (5064)
Power Bob-Tach Attachment Mounting System	Std	Std
<b>Dimensions</b>		
Length With Bucket in. (mm)	218.0 (5536)	220.0 (5589)
Length With Pallet Fork in. (mm)	245.1 (6226)	244.4 (6208)
Width Without Attachment in. (mm)	69.6 (1770)	70.9 (1800)
Height With Cab in. (mm)	97.3 (2472)	98.3 (2498)
Wheelbase in. (mm)	82.7 (2100)	82.7 (2100)
Height to Hinge Pin in. (mm)	126.9 (3225)	127.9 (3250)
Reach Fully Raised in. (mm)	29.9 (761)	30.8 (782)

*Certain specification(s) are based on engineering calculations and are not actual measurements. Specification(s) are provided for comparison purposes only and are subject to change without notice. Specification(s) for your individual equipment will vary based on normal variations in design, manufacturing, operating conditions and other factors.*



# BOBCAT PRODUCT SPECIFICATIONS



## COMPACT TRACTORS

Model	CT1021 HST	CT1025 HST	CT2025 HST	CT2035 HST	CT2535 HST	CT2040 HST	CT2540 HST	CT4045 HST	CT4050 HST	CT4055 SST	CT4058 HST	CT 5545 E-HST	CT5550 E-HST	CT5555 E-HST	CT5558 E-HST
<b>Engine</b>															
Engine Type	Diesel	Diesel	Diesel	Diesel	Diesel	Diesel	Diesel	Diesel	Diesel	Diesel	Diesel	Diesel	Diesel	Diesel	Diesel
Horsepower hp (kW)	21.0 (15.7)	24.5 (18.3)	24.5 (18.2)	34.9 (26.0)	34.9 (26.0)	39.6 (29.5)	37.6 (28.0)	44.9 (33.5)	50.3 (37.3)	50.3 (37.3)	57.7 (43.0)	45.0 (33.5)	50.0 (37.5)	55.0 (41.0)	57.7 (43.0)
Displacement cu. in. (L)	61.4 (1007)	61.4 (1007)	100 (1.6)	111.4 (1.8)	111.4 (1.8)	111.4 (1.8)	111.4 (1.8)	111.4 (1.8)	111.4 (1.8)	111.4 (1.8)	111.4 (1.8)	111.4 (1.8)	111.4 (1.8)	111.4 (1.8)	111.4 (1.8)
Fuel Tank gal. (L)	6.7 (25.5)	6.7 (25.5)	9.0 (34.1)	9.0 (34.1)	9.0 (34.1)	9.0 (34.1)	9.0 (34.1)	12.7 (48.0)	12.7 (48.0)	11.9 (45.0)	12.7 (48.0)	14.8 (56.0)	14.8 (56.0)	14.8 (56.0)	14.8 (56.0)
<b>Performance</b>															
PTO Horsepower hp (kW)	16.3 (12.1)	18.8 (14.0)	21.8 (16.3)	29.4 (21.9)	29.4 (21.9)	31.9 (23.8)	31.9 (23.8)	32.8 (24.5)	39.3 (29.3)	49.6 (37.0)	45.1 (33.7)	33.9 (25.3)	38.9 (29.0)	43.1 (32.1)	48.3 (36.0)
Travel Speed (forward) mph (km/hr.)	11.1 (17.8)	11.1 (17.8)	9.7 (15.6)	14.4 (23.1)	14.4 (23.1)	14.4 (23.1)	14.4 (23.1)	18.5 (29.7)	18.5 (29.7)	17.5 (28.2)	18.5 (29.7)	17.5 (28.2)	17.5 (28.2)	17.5 (28.2)	17.5 (28.2)
3-Point Lift Capacity lb. (kg)	700 (318)	700 (318)	1631 (740)	1631 (740)	1631 (740)	1631 (740)	1631 (740)	2716 (1232)	2716 (1232)	2716 (1232)	2716 (1232)	3177 (1441)	3177 (1441)	3177 (1441)	3177 (1441)
Rear PTO rpm	540	540	540	540	540	540	540	540	540	540	540	540	540	540	540
Rear PTO System	Indep.	Indep.	Live	Live	Indep.	Live	Indep.	Indep.	Indep.	Indep.	Indep.	Indep.	Indep.	Indep.	Indep.
Enclosed Cab With Heat/AC	-	-	-	-	Std	-	Std	-	-	-	-	Std	Std	Std	Std
<b>Drive System (transmission type)</b>															
Infinite, 2-Range Hydrostatic	Std	Std	-	-	-	-	-	-	-	-	-	-	-	-	-
Infinite, 3-Range Hydrostatic	-	-	Std	Std	Std	Std	Std	Std	Std	-	Std	Std	Std	Std	Std
Synchro (8x8)	-	-	-	-	-	-	-	Opt	Opt	Std	-	-	-	-	-
Manual (9x3)	-	-	Opt	Opt	-	Opt	-	-	-	-	-	-	-	-	-
<b>Dimensions</b>															
Overall Length (with 3-point) in. (mm)	99.3 (2522)	99.3 (2522)	120.9 (3070)	120.9 (3070)	120.9 (3070)	120.9 (3070)	120.9 (3070)	125.5 (3189)	125.5 (3189)	125.5 (3189)	125.5 (3189)	139.6 (3547)	139.6 (3547)	139.6 (3547)	139.6 (3547)
Overall Width (with industrial tires) in. (mm)	46.0 (1161)	46.0 (1161)	63.4 (1610)	63.4 (1610)	63.0 (1600)	63.4 (1610)	63.0 (1600)	69.8 (1722)	69.8 (1722)	69.8 (1722)	69.8 (1722)	74.2 (1885)	74.2 (1885)	74.2 (1885)	74.2 (1885)
Overall Height in. (mm)	87.6 (2225)	87.6 (2225)	91.5 (2324)	91.5 (2324)	91.0 (2311)	91.5 (2324)	91.0 (2311)	97.4 (2473)	97.4 (2473)	97.4 (2473)	97.4 (2473)	94.2 (2393)	94.2 (2393)	94.2 (2393)	94.2 (2393)
Inside Turning Radius in. (mm)	100.0 (2540)	100.0 (2540)	96.5 (2450)	96.5 (2450)	106.2 (2700)	96.5 (2450)	106.2 (2700)	103.5 (2630)	103.5 (2630)	103.5 (2630)	103.5 (2630)	117.6 (2990)	117.6 (2990)	117.6 (2990)	117.6 (2990)
Wheelbase in. (mm)	55.1 (1400)	55.1 (1400)	65.7 (1670)	65.7 (1670)	65.7 (1670)	65.7 (1670)	65.7 (1670)	71.2 (1810)	71.2 (1810)	71.2 (1810)	71.2 (1810)	75.6 (1920)	75.6 (1920)	75.6 (1920)	75.6 (1920)
Ground Clearance in. (mm)	6.3 (160)	6.3 (160)	11.5 (292)	11.5 (292)	12.3 (311)	11.5 (292)	12.3 (311)	15.3 (387)	15.3 (387)	15.3 (387)	15.3 (387)	13.0 (330)	13.0 (330)	13.0 (330)	13.0 (330)
Weight lb. (kg)	1521 (690)	1521 (690)	2634 (1195)	3005 (1363)	3585 (1626)	3005 (1363)	4381 (1987)	3745 (1698)	3745 (1698)	3745 (1698)	3745 (1698)	4685 (2125)	4685 (2125)	4685 (2125)	4685 (2125)

Additional models are available in the 2000 and 4000 platforms. Visit [Bobcat.com](http://Bobcat.com) for details.

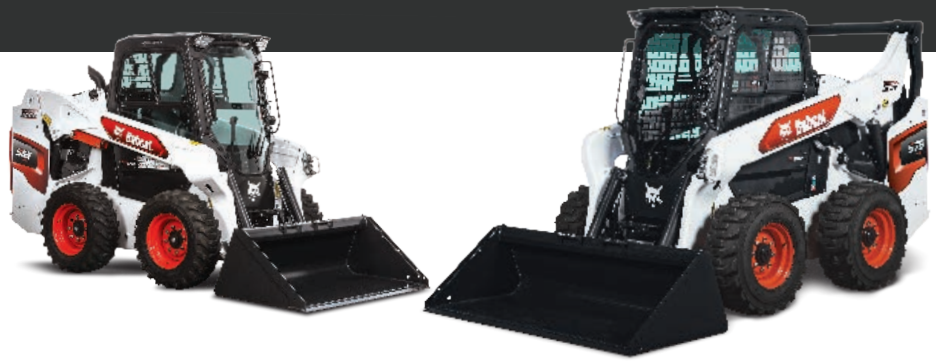
# BOBCAT PRODUCT SPECIFICATIONS



## COMPACT TRACK LOADERS

Model	T450	T550	T595	T62	T64	T66	T76	T740	T770	T870
Series	M3-Series	M3-Series	M3-Series	R-Series	R-Series	R-Series	R-Series	M2-Series	M2-Series	M2-Series
Engine										
Engine Type	Turbo Diesel	Turbo Diesel	Turbo Diesel	Turbo Diesel	Turbo Diesel	Turbo Diesel	Turbo Diesel	Turbo Diesel	Turbo Diesel	Turbo Diesel
Horsepower hp (kW)	55.0 (41.0)	68.0 (50.7)	70.0 (52.2)	68.0 (50.7)	68.0 (50.7)	74.0 (55.2)	74.0 (55.2)	74.0 (55.2)	92.0 (68.6)	100.0 (74.6)
<b>Performance</b>										
Rated Operating Capacity (35% of tipping load) lb. (kg)	1490 (676)	1995 (905)	2200 (998)	2150 (975)	2300 (1043)	2450 (1111)	2900 (1315)	3200 (1451)	3475 (1576)	3650 (1656)
Rated Operating Capacity (50% of tipping load) lb. (kg)	2120 (962)	2850 (1293)	3142 (1425)	3071 (1393)	3286 (1491)	3500 (1588)	4143 (1879)	4571 (2073)	4960 (2250)	5215 (2365)
Auxiliary Hydraulic Flow gpm (L/min.)	16.7 (63.2)	17.1 (64.7)	17.1 (64.7)	17.6 (66.6)	17.6 (66.6)	17.6 (66.6)	23.3 (88.2)	23.0 (87.1)	23.0 (87.1)	23.0 (87.1)
High-Flow Option gpm (L/min.)	–	–	–	26.9 (101.8)	26.9 (101.8)	26.9 (101.8)	30.3 (114.7)	30.5 (115.5)	36.6 (138.5)	36.6 (138.5)
Travel Speed mph (km/hr.)	6.9 (11.2)	7.1 (11.4)	7.1 (11.4)	7.2 (11.6)	7.2 (11.6)	7.2 (11.6)	6.8 (10.9)	6.0 (9.7)	6.6 (10.6)	5.5 (8.8)
Travel Speed (Two-Speed Option) mph (km/hr.)	11.0 (17.7)	–	–	10.2 (16.4)	10.2 (16.4)	10.2 (16.4)	9.2 (14.8)	8.3 (13.4)	10.7 (17.2)	9.3 (15.0)
Operating Weight lb. (kg)	6424 (2914)	7557 (3428)	8022 (3638)	8612 (3906)	8727 (3958)	8927 (4049)	10,250 (4649)	10,127 (4594)	10,515 (4770)	12,925 (5863)
Ground Pressure (standard tracks) psi (bar)	4.8 (0.33)	4.9 (0.34)	5.1 (0.35)	5.6 (0.38)	5.7 (0.39)	5.9 (0.40)	6.2 (0.42)	4.1 (0.28)	4.2 (0.29)	4.8 (0.33)
Ground Pressure (optional tracks) psi (bar)	–	4.0 (0.27)	4.1 (0.28)	4.7 (0.32)	4.7 (0.32)	4.8 (0.33)	4.6 (0.31)	–	–	–
Selectable Joystick Controls	Opt	Opt	Std	Opt	Opt	Opt	Std	Std	Opt	Std
Roller Suspension™ System	–	–	–	–	–	–	–	Opt	Opt	–
5-Link Torsion Suspension Undercarriage	–	–	–	Opt	Opt	Opt	Opt	–	–	Std
<b>Dimensions</b>										
Length With Bucket in. (mm)	126.6 (3215)	133.0 (3378)	133.0 (3378)	134.9 (3426)	134.9 (3426)	134.9 (3426)	147.1 (3737)	141.6 (3597)	141.6 (3597)	153.9 (3909)
Width With Bucket in. (mm)	56.0 (1422)	68.0 (1727)	68.0 (1727)	68.0 (1727)	68.0 (1727)	68.0 (1727)	74.0 (1880)	80.0 (2032)	80.0 (2032)	86.0 (2184)
Height With Cab in. (mm)	77.8 (1976)	77.8 (1976)	77.8 (1976)	80.5 (2045)	80.5 (2045)	80.5 (2045)	81.8 (2078)	81.3 (2065)	81.3 (2065)	83.6 (2123)
Height to Bucket Hinge Pin in. (mm)	109.5 (2781)	114.5 (2908)	119.0 (3023)	114.5 (2908)	120.0 (3048)	120.0 (3048)	128.3 (3259)	131.4 (3338)	131.4 (3338)	144.3 (3665)
Reach at Max. Height in. (mm)	23.5 (597)	17.0 (432)	34.9 (887)	23 (584)	36.7 (932)	36.7 (932)	39.9 (1013)	35.2 (894)	35.2 (894)	37.5 (953)
Ground Clearance at Center in. (mm)	8.4 (213)	7.4 (188)	7.4 (188)	7.5 (190)	7.5 (190)	7.5 (190)	8.8 (224)	9.4 (239)	9.4 (239)	10.0 (254)
Length of Track on Ground in. (mm)	50.2 (1275)	54.1 (1374)	54.1 (1374)	54.3 (1379)	54.3 (1379)	54.3 (1379)	59.2 (1504)	63.7 (1618)	63.7 (1618)	70.2 (1782)





## SKID-STEER LOADERS

Model	S70	S450	S510	S590	S62	S64	S66	S76	S740	S770	S850
Series		M3-Series	M3-Series	M3-Series	R-Series	R-Series	R-Series	R-Series	M2-Series	M2-Series	M2-Series
Engine											
Engine Type	Diesel	Turbo Diesel	Turbo Diesel	Turbo Diesel	Turbo Diesel	Turbo Diesel	Turbo Diesel	Turbo Diesel	Turbo Diesel	Turbo Diesel	Turbo Diesel
Horsepower hp (kW)	23.5 (17.5)	49.0 (36.5)	55.0 (41.0)	68.0 (50.7)	68.0 (50.7)	68.0 (50.7)	74.0 (55.2)	74.0 (55.2)	74.0 (55.2)	92.0 (68.6)	100.0 (74.6)
<b>Performance</b>											
Rated Operating Capacity (50% of tipping load) lb. (kg)	760 (344)	1370 (621)	1790 (812)	2100 (952)	2100 (952)	2300 (1043)	2400 (1089)	2900 (1315)	3100 (1406)	3350 (1520)	3950 (1792)
Auxiliary Hydraulic Flow gpm (L/min.)	9.8 (37.1)	16.7 (63.2)	17.1 (64.7)	17.1 (64.7)	17.6 (66.6)	17.6 (66.6)	17.6 (66.6)	23.3 (88.2)	23.0 (87.1)	23.0 (87.1)	23.0 (87.1)
High-Flow Option gpm (L/min.)	–	–	–	–	26.9 (101.8)	26.9 (101.8)	26.9 (101.8)	30.3 (114.7)	30.5 (115.5)	36.6 (138.5)	36.6 (138.5)
Travel Speed mph (km/hr.)	6.3 (10.1)	7.6 (12.3)	7.6 (12.3)	7.0 (11.2)	7.4 (11.9)	7.4 (11.9)	7.4 (11.9)	6.8 (10.9)	7.1 (11.4)	7.1 (11.4)	7.1 (11.4)
Travel Speed (Two-Speed Option) mph (km/hr.)	–	9.2 (14.8)	–	11.4 (18.4)	11.0 (17.7)	11.0 (17.7)	11.0 (17.7)	11.8 (18.9)	12.3 (19.8)	12.3 (19.8)	12.3 (19.8)
Operating Weight lb. (kg)	2892 (1312)	5370 (2436)	6208 (2816)	6765 (3069)	6884 (3123)	6974 (3163)	7154 (3245)	8615 (3908)	8794 (3989)	9314 (4225)	10,237 (4643)
Selectable Joystick Controls	–	Opt	Opt	Opt	Opt	Opt	Opt	Opt	Opt	Opt	Std
<b>Dimensions</b>											
Length With Bucket in. (mm)	97.3 (2472)	124.9 (3172)	133.0 (3378)	133.0 (3378)	134.9 (3426)	134.9 (3426)	134.9 (3426)	147.1 (3737)	141.6 (3597)	141.6 (3597)	147.7 (3751)
Width With Bucket in. (mm)	36.0 (914)	62.0 (1575)	68.0 (1727)	68.0 (1727)	68.0 (1727)	68.0 (1727)	68.0 (1727)	74.0 (1880)	74.0 (1880)	74.0 (1880)	80.0 (2032)
Height With Cab in. (mm)	71.4 (1814)	77.8 (1976)	77.8 (1976)	77.8 (1976)	80.5 (2045)	80.5 (2045)	80.5 (2045)	81.8 (2078)	81.3 (2065)	81.3 (2065)	83.4 (2118)
Height to Bucket Hinge Pin in. (mm)	94.5 (2400)	109.5 (2781)	114.5 (2908)	119.0 (3023)	114.5 (2908)	120.0 (3048)	120.0 (3048)	128.3 (3259)	131.4 (3338)	131.4 (3338)	144.0 (3658)
Reach at Max. Height in. (mm)	15.8 (401)	20.8 (528)	17.0 (432)	32.6 (828)	20.4 (518)	34.2 (869)	34.2 (869)	37.4 (950)	33.6 (853)	33.6 (853)	30.7 (780)
Ground Clearance at Center in. (mm)	5.5 (140)	8.4 (213)	7.3 (185)	7.3 (185)	7.5 (190)	7.5 (190)	7.5 (190)	8.8 (224)	8.1 (206)	8.1 (206)	9.4 (240)
Wheelbase in. (mm)	28.4 (721)	35.4 (899)	42.6 (1082)	42.6 (1082)	44.6 (1133)	44.6 (1133)	44.6 (1133)	48.3 (1227)	48.3 (1227)	48.3 (1227)	52.9 (1344)

Certain specification(s) are based on engineering calculations and are not actual measurements. Specification(s) are provided for comparison purposes only and are subject to change without notice. Specification(s) for your individual equipment will vary based on normal variations in design, manufacturing, operating conditions and other factors.

## TELEHANDLERS

Model	TL619	V723	V923
<b>Engine</b>			
Engine Type	Turbo Diesel	Turbo Diesel	Turbo Diesel
Horsepower hp (kW)	74.0 (55.2)	100.0 (74.5)	130.0 (97.0)
Displacement cu. in. (L)	207.5 (3.4)	207.5 (3.4)	207.5 (3.4)
<b>Performance</b>			
Operating Weight lb. (kg)	11,089 (5029)	17,155 (7781)	18,158 (8235)
Rated Lift Capacity lb. (kg)	5512 (2500)	7700 (3492)	9000 (4100)
Rated Capacity Full Height lb. (kg)	5512 (2500)	7700 (3492)	7000 (3175)
Rated Capacity Max. Reach lb. (kg)	2205 (1000)	3308 (1500)	3749 (1700)
Max. Lift Height in. (mm)	230.0 (5842)	273.9 (6957)	276.9 (7033)
Max. Reach in. (mm)	123.3 (3132)	161.5 (4102)	162.3 (4122)
Travel Speed (low) mph (km/hr.)	4.7 (7.5)	3.7 (6.0)	3.7 (6.0)
Travel Speed (high) mph (km/hr.)	18.3 (29.5)	18.7 (30.0)	24.8 (40.0)
Auxillary Hydraulic Flow gpm (L/min.)	21.0 (79.4)	26.4 (99.9)	39.6 (149.9)
<b>Dimensions</b>			
Length Fork Heel to Rear in. (mm)	175.3 (4453)	191.7 (4869)	195.9 (4975)
Width in. (mm)	82.7 (2100)	90.6 (2300)	90.6 (2300)
Height With Operator Cab in. (mm)	82.7 (2100)	95.4 (2424)	95.4 (2424)
Ground Clearance in. (mm)	10.4 (264)	16.9 (430)	16.9 (430)
Wheelbase in. (mm)	111.0 (2820)	113.0 (2870)	113.0 (2870)



## MINI TRACK LOADERS

Model	MT55	MT100
<b>Engine</b>		
Engine Type	Diesel	Diesel
Horsepower hp (kW)	24.8 (18.5)	24.8 (18.5)
Displacement cu. in. (L)	55.0 (0.9)	55.0 (0.9)
<b>Performance</b>		
Rated Operating Capacity lb. (kg)	550 (249)	1000 (453)*
Auxiliary Hydraulic Flow gpm (L/min.)	12.0 (45.4)	12.0 (45.4)
Travel Speed mph (km/hr.)	3.5 (5.6)	4.1 (6.6)
Operating Weight With Bucket lb. (kg)	2610 (1184)	3390 (1537)
Ground Pressure With Rubber Tracks psi (bar)	4.9 (0.34)	5.2 (0.36)
<b>Dimensions</b>		
Length With Bucket in. (mm)	93.1 (2365)	106.2 (2697)
Width With Bucket in. (mm)	36.0 (914)	36.0 (914)
Height in. (mm)	49.1 (1247)	54.6 (1387)
Height to Bucket Hinge Pin in. (mm)	71.2 (1808)	80.9 (2056)
Reach at Max. Height in. (mm)	18.2 (462)	18.6 (472)
Ground Clearance in. (mm)	4.5 (114)	8.1 (205)
Length of Track on Ground in. (mm)	34.0 (864)	41.4 (1052)

\*Counterweights located in the undercarriage.



# Bobcat®

**One Tough Animal.**





## EXCAVATORS

Model	E10	E20	E26	E32	E35 (25 HP)	E35 (33 HP)	E42	E50	E60	E88	E145	E165
Series	R-Series	R-Series	R-Series	R2-Series	R2-Series	R2-Series	R2-Series	R2-Series	R2-Series	R2-Series	Large	Large
<b>Tail Swing</b>												
Tail Swing	Zero	Zero	Minimal	Con.	Zero	Zero	Con.	Minimal	Con.	Con.	Reduced	Con.
<b>Engine</b>												
Engine Type	Diesel	Diesel	Diesel	Diesel	Diesel	Turbo Diesel	Turbo Diesel	Turbo Diesel	Turbo Diesel	Turbo Diesel	Turbo Diesel	Turbo Diesel
Horsepower hp (kW)	10.2 (7.6)	13.9 (10.4)	24.8 (18.5)	24.8 (18.5)	24.8 (18.5)	33.2 (24.7)	42.6 (31.4)	49.7 (36.5)	55.7 (41.6)	65.4 (48.7)	115.0 (85.9)	131.0 (97.9)
Machine Shutdown Protection	-	Std	Std	Std	Std	Std	Std	Std	Std	Std	Std	Std
<b>Performance</b>												
Operating Weight lb. (kg)	2593 (1176)	4306 (1953)	6489 (2942)	7403 (3358)	7659 (3474)	7893 (3580)	9830 (4459)	11,357 (5151)	12,315 (5586)	19,600 (8891)	34,987 (15,870)	38,376 (17,407)
Max. Dig Depth in. (mm)	71.7 (1820)	101.0 (2565)	114.4 (2906)	121.2 (3077)	121.2 (3077)	121.2 (3077)	124.5 (3163)	136.9 (3478)	156.7 (3981)	182.0 (4622)	235.6 (5985)	239.5 (6085)
Max. Reach at Ground Level in. (mm)	121.8 (3093)	167.9 (4264)	191.9 (4876)	194.5 (4940)	204.3 (5190)	204.3 (5190)	207.1 (5261)	231.9 (5889)	246.3 (6256)	282.5 (7176)	333.0 (8530)	346.0 (8790)
Max. Dump Height in. (mm)	71.6 (1818)	106.0 (2693)	125.3 (3184)	133.1 (3380)	133.1 (3380)	133.1 (3380)	148.1 (3762)	154.1 (3915)	168.8 (4288)	197.0 (5003)	278.7 (7078)	255.0 (6477)
Arm Digging Force lbf. (N)	1248 (5550)	2086 (9279)	3547 (15,780)	4690 (20,861)	4690 (20,861)	4690 (20,861)	5820 (25,889)	6987 (31,078)	6446 (28,674)	8620 (38,342)	13,228 (58,841)	18,077 (80,410)
Bucket Digging Force lbf. (N)	1865 (8294)	4684 (20,835)	5652 (25,140)	7284 (32,402)	7284 (32,402)	7284 (32,402)	9601 (42,707)	9511 (42,307)	10,261 (45,642)	15,130 (67,300)	21,471 (95,508)	25,794 (114,737)
Travel Speed (high) mph (km/hr.)	1.7 (2.8)	2.6 (4.2)	3.2 (5.2)	2.9 (4.7)	2.9 (4.7)	2.9 (4.7)	3.3 (5.2)	2.8 (4.5)	2.8 (4.5)	2.7 (4.4)	2.9 (4.6)	3.1 (5.0)
Ground Pressure (rubber) psi (bar)	4.2 (0.29)	4.4 (0.30)	4.1 (0.28)	4.7 (0.32)	4.6 (0.32)	4.7 (0.32)	4.6 (0.32)	4.2 (0.29)	4.6 (0.32)	5.7 (0.39)	6.6 (0.46)	-
Auxiliary Hydraulic Flow gpm (L/min.)	5.3 (20.0)	7.9 (30.0)	14.2 (53.8)	16.9 (63.9)	16.9 (63.9)	16.9 (63.9)	20.0 (75.7)	20.0 (75.7)	20.0 (75.7)	25.1 (95.0)	60.2 (227.8)	80.4 (304.3)
Angle Blade	-	-	-	-	Opt	Opt	Opt	Opt	Opt	Opt	-	-
<b>Dimensions</b>												
Length at Travel Position in. (mm)	110.0 (2793)	144.4 (3669)	170.4 (4327)	183.7 (4665)	190.0 (4826)	190.0 (4826)	200.5 (5092)	208.7 (5300)	218.3 (5545)	249.6 (6341)	288.0 (7315)	324.8 (8250)
Width in. (mm)	28.0-43.0 (710-1100)	38.6-53.5 (980-1360)	61.0 (1550)	61.8 (1569)	69.7 (1769)	69.7 (1769)	72.8 (1850)	77.2 (1960)	77.2 (1960)	86.6 (2200)	102.0 (2590)	102.0 (2590)
Height in. (mm)	87.0 (2209)	90.4 (2297)	96.0 (2438)	96.2 (2443)	96.2 (2443)	96.2 (2443)	99.1 (2518)	100.2 (2544)	100.1 (2543)	100.0 (2540)	123.0 (3135)	120.5 (3060)
<b>Long-Arm Options</b>												
Long Arm	-	Std	Std	Opt	Opt	Opt	Opt	Opt	Std	Std	Std	-
Operating Weight* lb. (kg)	-	4306 (1953)	6489 (2942)	8269 (3752)	8362 (3794)	8596 (3900)	10,425 (4729)	11,876 (5386)	12,315 (5586)	19,600 (8891)	34,987 (15,870)	-
Max. Dig Depth in. (mm)	-	101.0 (2565)	114.4 (2906)	133.0 (3377)	133.0 (3377)	133.0 (3377)	136.3 (3463)	152.7 (3878)	156.7 (3981)	182.0 (4622)	235.6 (5985)	-
Max. Reach at Ground Level in. (mm)	-	167.9 (4264)	191.9 (4876)	205.9 (5230)	215.8 (5480)	215.8 (5480)	218.5 (5550)	247.2 (6278)	246.3 (6256)	282.5 (7176)	333.0 (8530)	-
Max. Dump Height in. (mm)	-	106.0 (2693)	125.3 (3184)	140.2 (3561)	140.2 (3561)	140.2 (3561)	155.3 (3944)	164.2 (4170)	168.8 (4288)	197.0 (5003)	278.7 (7078)	-
<b>Extendable-Arm Options</b>												
Operating Weight* lb. (kg)	-	-	-	8497 (3855)	8590 (3897)	8824 (4003)	10,666 (4838)	-	12,646 (5736)	-	-	-
Max. Dig Depth in. (mm)	-	-	-	153.2 (3892)	153.2 (3892)	153.2 (3892)	148.4 (3769)	-	177.0 (4496)	-	-	-
Max. Reach at Ground Level in. (mm)	-	-	-	225.3 (5722)	235.1 (5972)	235.1 (5972)	229.6 (5831)	-	265.5 (6743)	-	-	-
Max. Dump Height in. (mm)	-	-	-	151.5 (3847)	151.5 (3847)	151.5 (3847)	161.2 (4094)	-	180.3 (4579)	-	-	-

\*With long arm and counterweight