

Maximize your compact track loader's performance with the right rubber tracks.

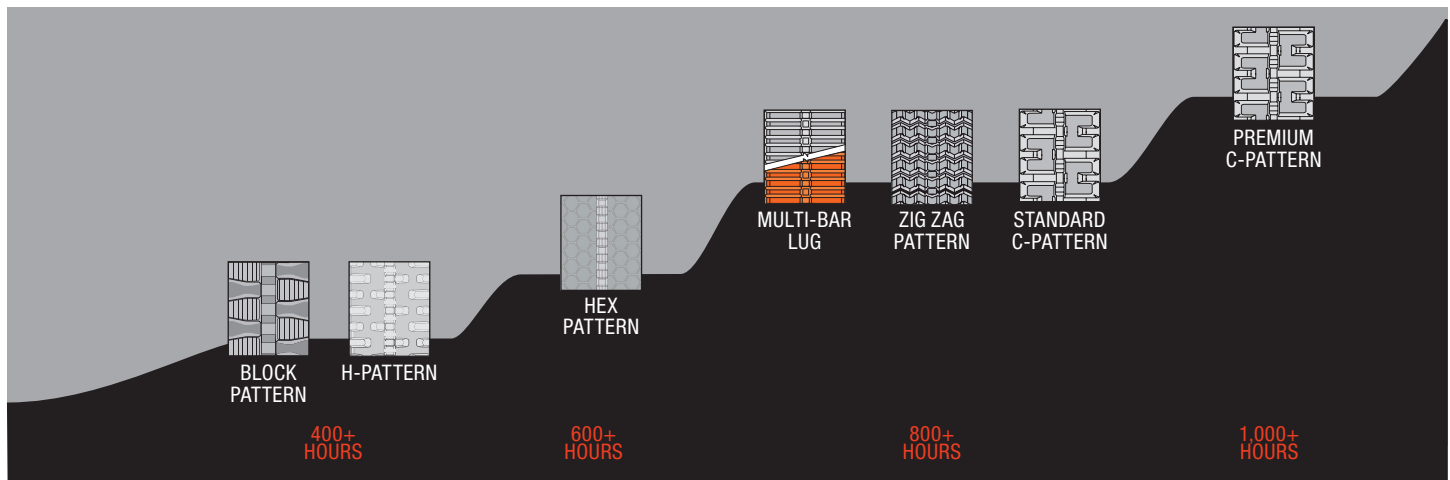
Bobcat® tracks are designed to give you superior performance and durability. Our rubber tracks are made using a blend of natural and synthetic rubbers to minimize wear. The internal continuous cables and heat-treated, hammer-forged steel imbeds provide strength and durability for the most demanding conditions.



You don't have to sacrifice ride comfort for added traction. Bobcat tracks have been tested and proven to not only withstand the most challenging environments, but to also deliver a softer ride by distributing the machine's weight over a larger surface area. Our tracks offer the traction needed to bring out the loader's full capabilities. Wider and thicker roller path area is key to the tracks' improved performance and vibration-mitigating technology – even on worn rollers.

Choosing the Right Track

Follow the charts below to choose the best track for you based on your hours of use and application.



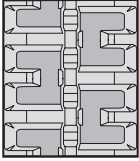
*Hour ratings listed above are based on usage in moderate working conditions.

| | ROCK | DIRT | SAND | CONCRETE | DEMOLITION | TURF | SNOW | MUD | SLOPED | CLAY |
|--------------------|------|------|------|----------|------------|------|------|-----|--------|------|
| PREMIUM C-PATTERN | ● | ● | ● | ● | ● | ● | ○ | ● | ● | ● |
| STANDARD C-PATTERN | ● | ● | ● | ● | ● | ● | ○ | ● | ● | ● |
| ZIG ZAG PATTERN | ● | ● | ● | ● | ● | ○ | ● | ● | ● | ● |
| MULTI-BAR LUG | ● | ● | ● | ● | ○ | ● | ● | ● | ○ | ● |
| HEX PATTERN | ○ | ● | ● | ○ | ○ | ● | ○ | ○ | ○ | ○ |
| H-PATTERN | ● | ○ | ● | ● | ● | ○ | ○ | ● | ● | ● |
| BLOCK PATTERN | ● | ● | ● | ● | ● | ● | ○ | ● | ● | ● |

○ Good ● Better ● Best



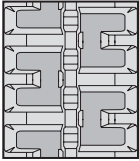
One Tough Animal



Premium C-Pattern

- Unmatched durability and versatility
- Great for all general construction work
- Superior traction in most applications
- Excellent for use on dirt, mud, rock, concrete and demolition
- Not recommended for turf or snow

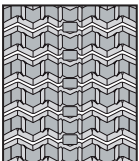
| | Availability by Platform | | | | | | |
|--------|--------------------------|-----|-----|-----|----|----|----|
| | 500 | 600 | 700 | 800 | 60 | 70 | 80 |
| 320 mm | ✓ | ✓ | ✓ | | ✓ | ✓ | |
| 400 mm | ✓ | | | | ✓ | | |
| 450 mm | | ✓ | ✓ | ✓ | | ✓ | ✓ |



Standard Duty C-Pattern

- Durable and versatile track pattern
- Great for all general construction work
- Great traction all season long
- Excellent for use on concrete, dirt and mud
- Not recommended for turf or snow

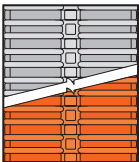
| | Availability by Platform | | | | | | |
|--------|--------------------------|-----|-----|-----|----|----|----|
| | 500 | 600 | 700 | 800 | 60 | 70 | 80 |
| 320 mm | ✓ | ✓ | ✓ | | ✓ | ✓ | |
| 400 mm | ✓ | | | | ✓ | | |
| 450 mm | | ✓ | ✓ | | | ✓ | |



Zig Zag Pattern

- Reliable and durable track pattern
- Efficient stepped tread lug design for improved cleanout
- Excellent for use on dirt, mud, rock and sand
- Ideal on wet, clay, muddy and sloped applications
- Not recommended for demolition or turf

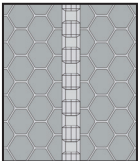
| | Availability by Platform | | | | | | |
|--------|--------------------------|-----|-----|-----|----|----|----|
| | 500 | 600 | 700 | 800 | 60 | 70 | 80 |
| 320 mm | ✓ | ✓ | | | ✓ | ✓ | |
| 400 mm | ✓ | | | | ✓ | | |
| 450 mm | | ✓ | ✓ | ✓ | | ✓ | ✓ |



Multi-Bar Lug

- Outstanding durability on hard, flat surfaces such as sand and dirt
- Great for all general construction work
- Best for snow removal with superior traction in wet conditions
- Available in a non-marking orange option
- Not recommended for turf or extremely rocky conditions

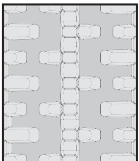
| | Availability by Platform | | | | | | |
|--------|--------------------------|-----|-----|-----|----|----|----|
| | 500 | 600 | 700 | 800 | 60 | 70 | 80 |
| 320 mm | ✓ | ✓ | | | ✓ | ✓ | |
| 400 mm | ✓ | ✓ | | | ✓ | ✓ | |
| 450 mm | | ✓ | ✓ | ✓ | | ✓ | ✓ |



Hex Pattern

- Versatile track pattern with exceptional traction
- Extremely durable on concrete and sand
- Turf-friendly with maximal flotation and minimal disturbance
- Excellent on soft dirt or sandy applications
- Not recommended for extremely wet conditions

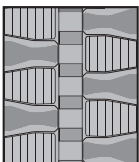
| | Availability by Platform | | | | | | |
|--------|--------------------------|-----|-----|-----|----|----|----|
| | 500 | 600 | 700 | 800 | 60 | 70 | 80 |
| 320 mm | ✓ | ✓ | | | ✓ | ✓ | |
| 400 mm | ✓ | | | | ✓ | | |
| 450 mm | | ✓ | ✓ | ✓ | | ✓ | ✓ |



H-Pattern

- Durable multi-application track pattern
- Good for general construction work
- Offset tread pattern minimizes vibration and reduces undercarriage wear
- Good on rock, concrete, mud or sloped surfaces
- Not recommended for turf or snow

| | Availability by Platform | | | | | | |
|--------|--------------------------|-----|-----|-----|----|----|----|
| | 500 | 600 | 700 | 800 | 60 | 70 | 80 |
| 320 mm | ✓ | ✓ | | | ✓ | ✓ | |
| 400 mm | ✓ | | | | ✓ | ✓ | |
| 450 mm | | ✓ | ✓ | ✓ | | ✓ | |



Block Pattern

- Durable multi-application track pattern
- Good for general construction work
- Excellent traction and grip on multiple terrains
- Flotation feature due to distribution of track weight
- Not recommended for snow

| | Availability by Platform | | | | | | |
|--------|--------------------------|-----|-----|-----|----|----|----|
| | 500 | 600 | 700 | 800 | 60 | 70 | 80 |
| 320 mm | ✓ | ✓ | | ✓ | ✓ | ✓ | |
| 400 mm | ✓ | | | | ✓ | | |
| 450 mm | | ✓ | ✓ | ✓ | | ✓ | |