



Bobcat®

Backhoe Loaders B760



One Tough Animal®

NEW BACKHOE LOADER EMPOWERED BY BOBCAT TECHNOLOGY

► The Bobcat Backhoe loader is an outstanding machine, designed with Bobcat DNA. Smart and Stylish B760 introduces a best-in-class durability, easy operation & maintenance, proven safety and guaranteed performance.



One piece engine hood

Standard return-to-dig function

Easy access to battery box

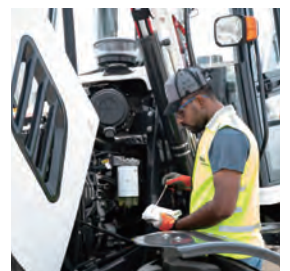
In this brochure >>



► **DURABILITY**
Best-in-class durability with more reliable structures
P. 4



► **COMFORT AND EASY OPERATION**
Cabin designed for maximizing operator comfort
P. 6





▶ **SERVICEABILITY**
Easier access for maintenance
P. 10



▶ **SAFETY**
Prevent unexpected movement with Safety lock
P. 11



▶ **VERSATILITY**
Standard features and options Attachments
P. 12

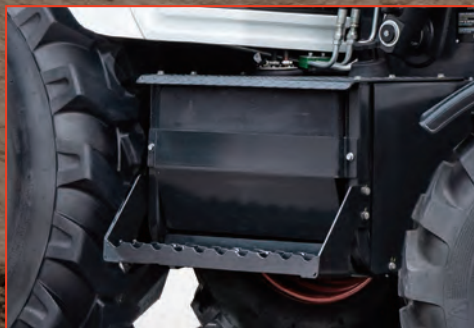


BOBCAT B760, BEST-IN-CLASS DURABILITY



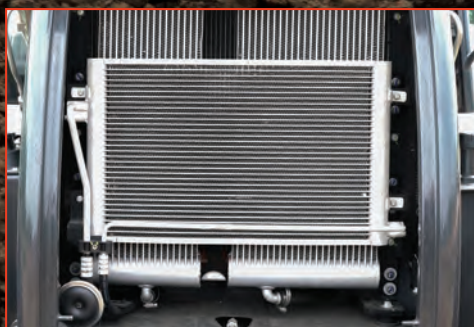
▶ HIGH PERFORMANCE TURBOCHARGED ENGINE

- High performing PERKINS Engine
- PTO mounted steering pump for independent steering application that ensures safe driving
- Better performance and control in high altitude up to 3,000 m



▶ MORE RELIABLE AND DURABLE STRUCTURES

- Inhouse fabricated structures
- Robotically welded and high durability design structures
- Heavy Duty main frame structures
- Well protected fuel tank and metal engine bonnet



▶ QUALITY ENSURED COOLING PACKAGE

- High performance aluminum radiator



▶ MARKET-PROVEN DRIVETRAIN

- High performance Manual & Auto transmission





MAXIMIZED OPERATOR COMFORT





- ROPS / FOPS Level II certified cabin structure
- Lower noise and vibration



- Operator comfort control system
- Instrument cluster



- Tiltable steering column with soft steering wheel with a knob
- Warning indicators



- Better visibility across all sides with slim support pillars



EASE OF OPERATION



▶ RETURN TO DIG (STANDARD)

- On the down movement, the bucket automatically returns to the digging position
- Reduces the full loading cycle times
- Increases productivity and efficiency dramatically

▶ RIDE CONTROL (OPTIONAL)

- Best comfort to drive on roads or in rough terrain conditions
- No shock on the mechanical components
- Absorbs the shock on the loader boom
- Optimizes the acceptable travel speed



WIDE WORKING RANGE

Enjoy best-in-class reach and digging depth to maximize your efficiency



EASIER ACCESS FOR MAINTENANCE



You don't have to go through all the components for hydraulic/fuel refill and battery charge. You can access to hydraulic tank and fuel tank located on lateral side of machine. For your convenience, battery box is located right under the hydraulic tank.



- By simply pushing a lever inside the cabin, one-piece engine hood opens and you can easily access to components for daily to regular maintenance.



SAFETY-PROVEN DESIGN



- When you drive, one-piece lock can help you prevent the backhoe from swing or boom down by mechanically lock boom and swing cylinders.



- You can prevent the loader arm from falling by simply putting lift arm support device on loader cylinder.



- Safety valve for stabilizers avoid sudden drift and maintain even pressure at both caps and rods on the end of the stabilizers.



STANDARD EQUIPMENT & OPTIONS



STANDARD EQUIPMENT

- Synchronshuttle transmission
- Mechanical control lever
- Cabin with fan
- 4WD
- GP bucket
- 600mm backhoe bucket
- 12V Aux
- 8 work lights (4 front, 4 rear)
- Exterior and interior mirror
- Floormat
- Front and rear windshield and wiper
- Front headlights
- Fully equipped dashboards
- Horn
- Mechanical suspension seat with seat belt and arm rest
- Radio/CD player
- Reverse alarm
- Steering wheel knob
- Storage areas
- Sun visor
- Tilted steering column
- USB port
- Camso Tires

OPTIONS

- Autoshift transmission
- Pilot controls with pattern selector
- Cabin with HVAC
- Extendable arm
- 4WD shaft guard
- Mudguard front
- Ride control



ATTACHMENTS



Get your attachments and maximize versatility of your backhoe loader.

LOADER

- 6-in-1 bucket
- GP bucket with pallet forks
- GP bucket with cutting edge
- GP bucket with cutting edge & pallet forks
- 6-in-1 ready piping

BACKHOE

- Breaker piping
- 800mm backhoe bucket
- Hydraulic breaker
- Trenching bucket



SPECIFICATIONS

Model	B760
Engine	
Make/Model	Perkins/ 1104D-44T
Standard	EU Stage3 and EPA Tier3
Aspiration	Turbocharged
Number of cylinders	4
Displacement	4.4 L
Rated gross power	70 kW/ 94 hp
Rated speed	2200 rpm
Maximum torque	392 Nm
Fuel	Diesel
Cooling	Water
Transmission	
Make/Model	Carraro
Number of speeds (F/R)	4/4
Maximum speed	40.0 km/h
Front Axle	
Type	4WD
Oscillation	16 °
Rear Axle	
Make/Model	Carraro
Differential lock	Standard
Hydraulic System	
System type	Open center
Pump	Tandem gear pump
Flow	73 + 64 L/min
Steering	
Type	2WS
Brakes	
Service	Hydraulic wet multi-disc, dual pedal braking
Parking	Mechanical control on rear axle

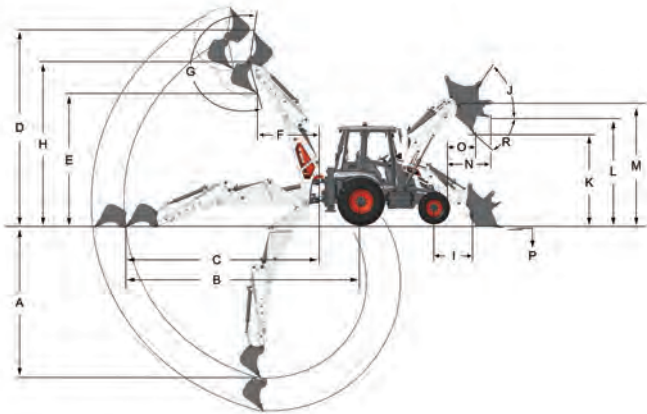
Model	B760
Loader Performance	
Bucket capacity GP	1.0 m ³
Breakout force bucket	57.5 kN
Breakout force arm	57.9 kN
Rated operating capacity at max. height	3506 kg
Backhoe Performance	
Bucket capacity	0.18 m ³
Max. bucket breakout force	60.8 kN
Arm breakout force	40.1 kN
Operating Weight	
Base machine	7900 kg
Tires	
Front	12.5-18
Rear	16.9-28
Service Capacity	
Engine oil (with filters)	7 L
Cooling system	16 L
Fuel tank	160 L
Hydraulic tank	70 L
Hydraulic system	140 L
Transmission oil	16 L
Axle oil front	9.1 L
Axle oil rear	17.5 L

*Certain specification(s) are based on engineering calculations and are not actual measurements. Specification(s) are provided for comparison purposes only and are subject to change without notice. Specification(s) for your individual Bobcat equipment will vary based on normal variations in design, manufacturing, operating conditions, and other factors.



SPECIFICATIONS

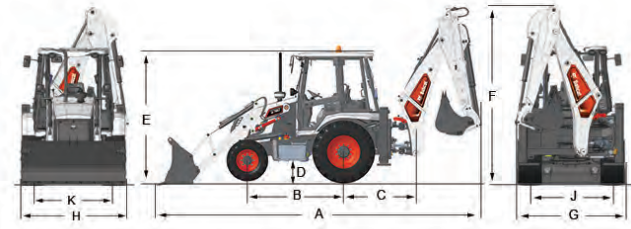
Working Range



Backhoe Dimensions		Retracted	Extended
A	Max. digging depth	4633mm	5623mm
B	Max. reach from rear axle center	7115mm	8063mm
C	Max. reach from swing center	5787mm	6735mm
D	Max. digging height	5855mm	6584mm
E	Max. dumping height	4052mm	4783mm
F	Loading reach	1844mm	2527mm
G	Bucket rotation angle	202 °	202 °
H	Max. bucket hinge pin height	4910mm	5641mm

Loader Dimensions		
I	Distance between hinge pin and front axle center	1133mm
J	Max. rollback angle, fully raised	64 °
K	Dump height	2728mm
L	Load over height	3200mm
M	Height to hinge pin	3501mm
N	Max. reach at full height	1171mm
O	Dumping reach	753mm
P	Digging depth	127mm
R	Dump angle	43 °

Dimensions



A	Overall machine length in travel position	6130mm
B	Wheelbase	2193mm
C	Backhoe swing center distance	1328mm
D	Ground clearance	428mm
E	Cab height	2940mm
F	Machine height in travel position	3798mm
G	Machine width overall	2356mm
H	Overall width with bucket	2280mm
J	Rear wheel track	1720mm
K	Front wheel track	1961mm





THE LEADER IN VERSATILITY AND MANEUVERABILITY



Skid-Steer Loaders



Compact Track Loaders



Backhoe Loaders



Compact Excavators



Mini Track Loaders



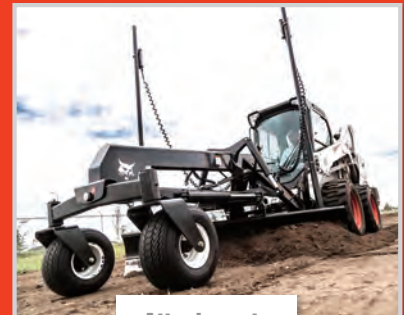
Telescopic Handler



Toolcat™ Utility Work Machines



Utility Vehicles



Attachments

Certain specification(s) are based on engineering calculations and are not actual measurements. Specification(s) are provided for comparison purposes only and are subject to change without notice. Specification(s) for your individual Bobcat equipment will vary based on normal variations in design, manufacturing, operating conditions, and other factors. Pictures of Bobcat units may show other than standard equipment. Actual feature(s) and option(s) may vary by the region.

DOOSAN

Bobcat is a Doosan company. Doosan is a global leader in construction equipment, power and water solutions, engines, and engineering, proudly serving customers and communities for more than a century. Bobcat®, the Bobcat logo and the colors of the Bobcat machine are registered trademarks of Bobcat Company in the United States and various other countries.
©2021 Bobcat Company. All rights reserved.



Bobcat®

Doosan Bobcat India Pvt Ltd

HTC Towers, 6th Floor, No.41, GST Road,
Guindy, Chennai - 600032, India

☎+91 9600004852 Website: www.bobcat.com