



Bobcat[®]

One Tough Animal.

ELECTRIC FORKLIFTS

7-Series 1.8 to 3.5 ton capacity

B15S-7 / B18S-7 / B20S-7 / B25S-7 / B30S-7 / B32S-7



ONE TOUGH ANIMAL

► **OUR MISSION**

We empower operators to accomplish more while working in the toughest conditions and tightest situations. When our customers have the will, we provide the way.

INTRODUCTION



► **BOBCAT'S HISTORY**

In 1958, Melroe Manufacturing Company introduced a compact front-end loader that evolved quickly into the M400, the world's first true skid steer loader. The company soon adopted what became the world-famous 'Bobcat' brand – and its success paved the way for the global compact equipment industry we know today.

► **YEARS OF EXPERIENCE**

In 2021, Bobcat expanded its portfolio by acquiring Doosan Industrial Vehicle. This specialist in material handling equipment constructed its first forklift in 1968 and went on to establish a global presence with 400 dealers in 93 countries.



► **BOBCAT TODAY**

Bobcat is expanding its portfolio with the addition of forklifts and reach trucks for the material handling industry, offering a comprehensive lineup that will meet all your intralogistics needs. Bobcat forklifts and reach trucks are produced in our factory in South Korea, while our premium quality warehouse equipment is made in Germany.



TOUGH, AGILE & SAFE

► BUILT FOR THE EXTREME

Keep your operation running smoothly with the rugged and reliable B(C)25S-7 electric forklifts, designed to deliver all-day performance. Dependability is increased thanks to features like oil-cooled disc brakes and a durable transaxle, while safeguards such as IP65-rated controllers, sealed contactors, and motors ensure long-lasting protection for your investment. For further enhancements, consider upgrading your drive and pump motor to an IP54 rating or opt for the specialized hydraulic oil, enabling you to use the forklift for short durations in cold temperatures (up to -20 °C).



Reduced noise at ear level to protect the operator's hearing

Customizable operator compartment with preferred control convenience (2-4 way levers)

Excellent visibility through the mast for safer and more efficient operations
P7

A durable frame and mast for safer operation when carrying loads



Improved upward visibility through the roof while lifting

Premium adjustable seat and steering column for maximum comfort during long shifts
P11

Improved cooling performance to reduce the risk of overheating, resulting in less downtime and increased productivity

Reduced steering radius for more maneuverability
P7

IP54 rated drive & pump motors for operating in temperatures as low as -20 °C
P7



► EFFICIENCY MAXIMIZED

Boost productivity with the 7 Series truck, featuring a small turning radius for enhanced maneuverability, a hydraulic lever with a convenient directional switch, and an auto-tilt leveling system.

P 6-7



► COMFORT IN ACTION

Face long shifts head-on with the added comforts of temperature control, entertainment options, and premium seating.

P 8-9



► SAFETY COMES STANDARD

Work with confidence thanks to the extensive lineup of safety features including Turtle Mode, emergency stopping, mast and tilt interlocks, and more.

P 10-11



► RUGGED RELIABILITY

Experience a synergy of power, performance, and functionality with features like IP43/IP54-rated dust and water protection, an AC Curtis controller, and oil-cooled disk brakes.

P 12-13

OUTSTANDING PRODUCTIVITY



RELIABLE AC CONTROLLER

Make every load and lift more efficient with our reliable and powerful AC Curtis controller and single drive motor.



EXCELLENT VISIBILITY

Confidently work faster and more efficiently on any job site thanks to unparalleled visibility. The overhead guard with angled roof bars offers a clear upward view without compromising strength or safety, while neatly arranged hydraulic hoses reduce clutter.



RESPONSIVE ACCELERATION AND BRAKING

Enjoy the convenience and comfort of controlled, responsive acceleration and braking. When the truck starts, the acceleration is moderated for a secure start. As speed increases so does acceleration, enhancing productivity.



SWIFT DIRECTIONAL CHANGES

Toggle between forward and reverse travel with ease thanks to a switch conveniently located on the lift lever.

COMFORT & CONTROLS



▶ SPACIOUS CABIN

Enjoy increased cabin space thanks to the compact steering wheel. This not only eases maneuverability in tight spaces and enhances response time but also allows for more precise load handling. Plus, it reduces operator fatigue and boosts training efficiency for new operators.



▶ MORE LEGROOM

Our cabin provides ample legroom to minimize strain, enhance focus, and create a more relaxed work atmosphere for the operator.



▶ EFFORTLESS CONTROL

Operators can seamlessly control truck performance during operation with the user-friendly instrument panel, offering a wide range of adjustments and settings. It also provides other alerts, ergonomic options, and language preferences for a more comfortable and user-friendly experience.



▶ ADDED CONVENIENCE

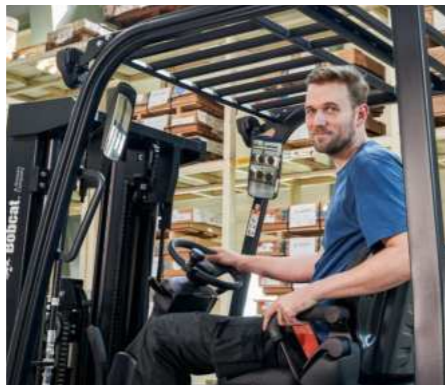
For maximum convenience, enjoy a large cup holder, USB port, 12 V power outlet, and clipboard holder, comfortably placed within your reach.

▶ EASY ACCESS



The anti-slip step provides a comfortable and safe way to hop on and off for peace of mind.

▶ YEAR-ROUND COMFORT



Experience optimal comfort in any weather with the optional heater and air conditioner.

▶ ENHANCE YOUR WORK SPACE



Enhance your work experience with the optional radio and MP3 player – improving focus and relaxation on the job.



SAFETY IN EVERY MOVE

▶ SAFETY COMES STANDARD

Operators can work with confidence thanks to the extensive lineup of safety features including Turtle Mode, emergency stopping, mast and tilt interlocks, and speed control.

▶ ANTI-ROLL BACK

The anti-roll back feature prevents the forklift from rolling back for 5 seconds when the truck is stopped.



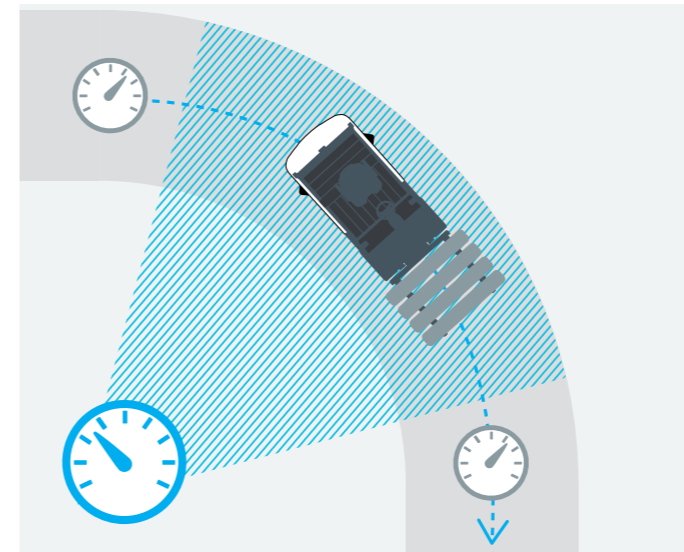
▶ OPERATOR SENSING SYSTEM

The OSS (Operator Sensing System) keeps operators safe and sound by disabling both truck travel and mast lifting functions as soon as the operator leaves the seat to prevent any unwanted movement.



▶ AUTOMATIC SPEED CONTROL

The automatic speed control manages travel speeds when turning sharply and automatically slows the truck down when cornering to reduce the risk of accidents or damage.



▶ EMERGENCY SWITCH

The emergency switch is always within your reach, ready to be pressed in case of emergency.



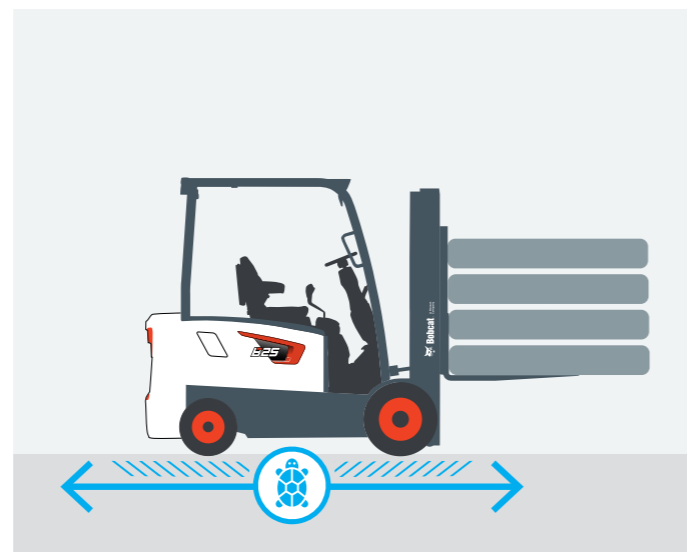
▶ MAST AND TILT INTER-LOCKS

When the operator leaves the truck unattended, the hydraulic locking system prevents unintentional lowering and tilting of the mast. This keeps the truck, load, and work area safe.



▶ TURTLE MODE

To make warehouse operations more secure, activate Turtle mode to decrease the truck's travel speed to a preset level while maintaining lift speed.



▶ PANORAMIC MIRROR

The large panoramic mirror leaves the operator with a clear and unobstructed view of the rear working area.



▶ LED LIGHTING SYSTEM

The LED lights illuminate even the darkest corners of your workplace, allowing you to always safely see your surroundings.

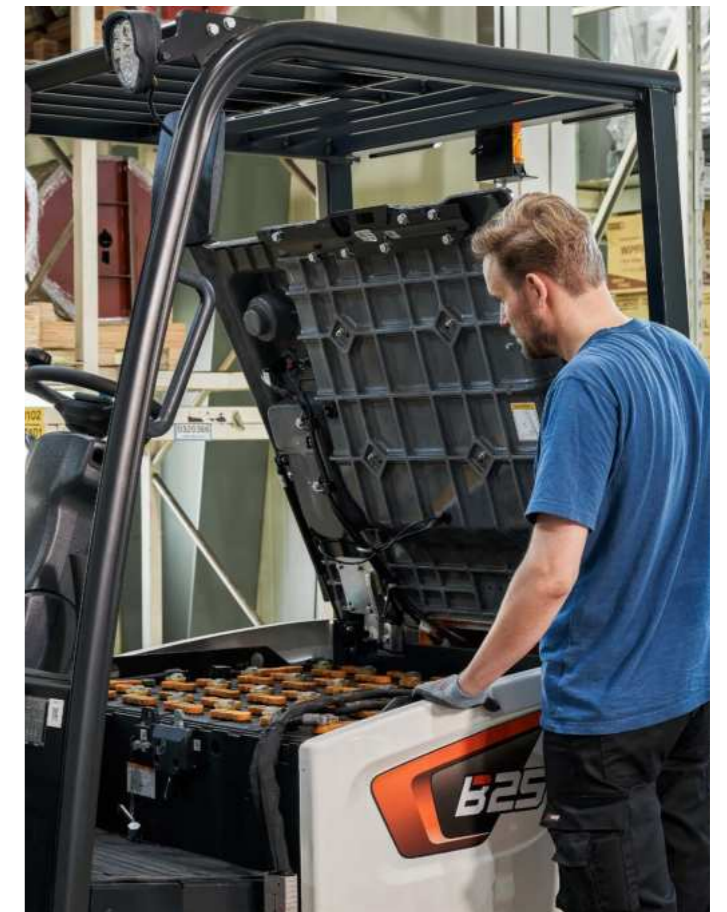


BUILT TO LAST

DESIGNED TO ENDURE

The B(C)25S-7 series is engineered to minimize damage, decrease downtime, boost safety, and enhance operator comfort. We provide Cold Storage Hydraulic Oil that is effective in environments as cold as -20°C, ensuring optimal operational efficiency for your intralogistics business.

THERE'S NO TIME FOR DOWNTIME. STAND UP TO EVERY TASK THAT COMES YOUR WAY, DAY AFTER DAY.



EXTENSIVE DEALER NETWORK

You will receive the best after-sales service from your authorized local or national factory-trained dealer, backed by Bobcat's own customer service center. And Bobcat provides 100% parts inventory to insure any downtime is minimized. When you own a Bobcat forklift, our high quality, responsive customer support team comes with it.

BOBCAT GENUINE PARTS

We provide our dealers with high-quality components to ensure our equipment stays reliable and consistently delivers dependable performance even in the toughest conditions.

MAIN SPECIFICATIONS

MAIN SPECIFICATION		B15S-7	B18S-7	B20S-7	B25S-7	B30S-7	B32S-7
Load capacity/rated load	kg	1500	1750	2000	2500	3000	3200
Load centre distance	mm	500	500	500	500	500	500
Load distance, centre of drive axle to fork	mm	394	394	410	410	411	411
Wheelbase	mm	1250	1250	1400	1400	1550	1550
Aisle width for pallets 1000 x 1200 crossways	mm	3421	3451	3652	3672	3801	3831
Aisle width for pallets 800 x 1200 lengthways	mm	3221	3251	3452	3472	3601	3631
Turning radius	mm	1825	1855	2040	2060	2190	2220
Travel speed, loaded / unloaded	km/h	17 / 17	17 / 17	18 / 18	18 / 18	18 / 18	18 / 18
Lift speed, loaded / unloaded	m/sec	0.40 / 0.60	0.40 / 0.60	0.44 / 0.60	0.39 / 0.60	0.34 / 0.60	0.32 / 0.60
Lowering speed, loaded / unloaded	m/sec	0.50 / 0.45	0.50 / 0.45	0.50 / 0.46	0.50 / 0.46	0.50 / 0.46	0.50 / 0.46
Maximum drawbar pull, loaded, 5 minute rating	N	10497	10693	15892	15598	14224	14126
Maximum gradeability, loaded, 5 minute rating	%	24	22	28	24	19	18
Battery voltage/nominal capacity K5	V/Ah	48 / 450	48 / 500	48 / 715	48 / 800	48 / 800	48 / 800

Specification values quoted in this specification sheet have been rounded. Performance may vary depending on operating conditions. Products and specifications are subject to improvement and change without prior notice.



STANDARD EQUIPMENT & OPTIONS

STANDARD EQUIPMENT & OPTIONS	
SAFETY & STABILITY	
Easy entry grab bar	✓
Parking brake (B25S-7 Series only)	✓
Two front LED lights	✓
Emergency stop switch	✓
Panoramic mirror	•
ERGONOMICS	
Large entry step with anti-slip pattern	✓
Large & angled floor plate (leg room) with rubber cushion	✓
Rounded design battery hood cover	✓
Easy to read instrument panel	✓
Adjustable tilt steering column & easy grip (Ø 280 size) steering wheel	✓
Large cup holder, usb port & 12V electric jack, clip board	✓
Additional accessory bar	✓
Reduced noise level	✓
Rear grab bar with horn	•
Premium suspension seat	•
Full cabin	•

STANDARD EQUIPMENT & OPTIONS	
GUARDIAN STABILITY SYSTEM (GSS)	
OSS (Operator Sensing System)	✓
Anti-roll back	✓
Low battery warning alarm	✓
Turtle mode	✓
Mast lowering interlock & tilt lock (ISO 3691)	✓
Back up alarm	•
PRODUCTIVITY	
Full AC system chassis	✓
Rounded design counterweight	✓
High visibility mast (B20/25S-7)	✓
Hydraulic cushioned valve in freelif cylinder (FFL & FFT)	✓
Auto tilt levelling	•
Direction switch on lift lever	•
RELIABILITY	
Robust frame structure & strong structure overhead guard	✓
IP65 Rated Curtis controller	✓
IP43 Rated drive & pump motors	✓
Improved cooling performance	✓
IP54 rated drive & pump motors	•
Oil-cooled disc brakes (ODB)	✓
SERVICEABILITY	
Easy to access controller & motors room	✓
Wide open battery hood cover	✓
Tool-less side cover with air ventilation	✓
Easy View	✓

*This list is based on factory data. Standard or optional can vary for specific countries.

- = option
- ✓ = standard
- = not available

YOUR TRUSTED BUSINESS PARTNER

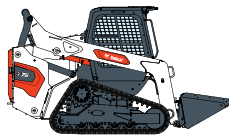
Your machine builds your business and reputation. Everything we put into Bobcat equipment is designed to make this possible. Strength, versatility, or agility, it's built around you.



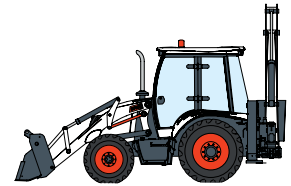
340 MACHINES / 150 ATTACHMENT FAMILIES / 1 TOUGH ANIMAL



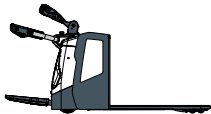
SKID-STEER LOADERS



COMPACT TRACK LOADERS



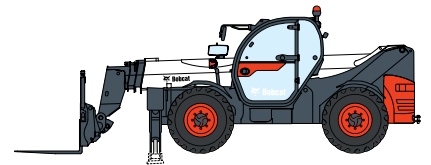
BACKHOE LOADERS



WAREHOUSE EQUIPMENT



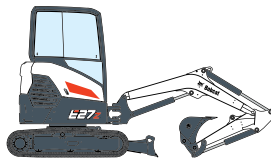
FORKLIFTS



TELEHANDLERS



LIGHT COMPACTION EQUIPMENT



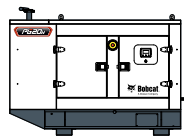
COMPACT EXCAVATORS



SMALL ARTICULATED LOADERS



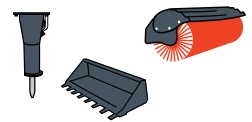
MINI TRACK LOADER



PORTABLE GENERATORS



AIR COMPRESSORS



ATTACHMENTS

DOOSAN

Bobcat is a Doosan Company. Doosan is a global leader in construction equipment, power & water solutions, engines, and engineering proudly serving customers and communities for more than a century. | Bobcat and the Bobcat logo are registered trademarks of Bobcat Company in the United States and various other countries. ©2024 Bobcat Company. All Rights Reserved.

Doosan Bobcat Korea Co., Ltd.



Bobcat®