



Bobcat[®]

One Tough Animal.

DIESEL FORKLIFTS

5-Series, Pneumatic, 3.5 to 5.5 ton capacity [D35S-5](#) / [D40S-5](#) / [D45S-5](#) / [D50C-5](#) / [D55C-5](#) / [D40SC-5](#) / [D45SC-5](#) / [D50SC-5](#) / [D55SC-5](#)



ONE TOUGH ANIMAL

▶ OUR MISSION

We empower operators to accomplish more, while working in the toughest conditions and tightest situations. When our customers have the will, we provide the way.

INTRODUCTION



▶ BOBCAT'S HISTORY

In 1958, Melroe Manufacturing Company introduced a compact front-end loader that evolved quickly into the M400, the world's first true skid steer loader. The company soon adopted what became the world-famous 'Bobcat' brand – and its success paved the way for the global compact equipment industry we know today.

▶ YEARS OF EXPERIENCE

In 2021, Bobcat expanded its portfolio by acquiring Doosan Industrial Vehicle. This specialist in material handling equipment constructed its first forklift in 1968 and went on to establish a global presence with 400 dealers in 93 countries.



▶ BOBCAT TODAY

Bobcat is expanding its portfolio with the addition of forklifts and reach trucks for the material handling industry. Offering a comprehensive line-up that will meet all your intralogistics needs. Bobcat forklifts and reach trucks are produced in our factory in Korea, while our premium quality warehouse equipment is made in Germany.



TOUGH, AGILE & SAFE

DESIGNED FOR PRODUCTIVITY

With high-performance engines, fluid, intuitive controls, superior operator comfort, and a host of safety features, Bobcat D40S-5 Series are ready to boost the productivity of your business while keeping spending in check thanks to a low cost of ownership.



POWERFUL AND EFFICIENT
Get more done daily thanks to high-performance engines with 2-speed power shift transmission and up to 67.7kW of power to boost productivity in every task.
P 6-7



COMFORTABLE ALL SHIFT LONG
Enjoy the comfort of a spacious cab with plenty of legroom, deluxe suspended seat, integrated instrument panel, tiltable steering column, and many more features.
P 8-9



SAFETY FIRST
Protect your investment, workforce, and handled goods. Excellent all-around visibility, reliable oil-cooled brakes, and a host of other safety features come as standard.
P 10-11



BUILT TOUGH
This series deliver reliability through features like robust mast design, engine shutdown, and anti-dust frame & component so you can enjoy the power of Bobcat for years to come.
P 12-13

OUTSTANDING PRODUCTIVITY



SEAMLESS SHIFTING

Experience seamless transitions between tasks or adjustments to different conditions with our two-speed autoshift transmission, allowing you to achieve the perfect balance between precision and movement.

BUILT TOUGH

The superior hydrostatic steering system is designed for high shock absorption, while the rugged frame, fully floating drive axle, and oil-cooled brakes ensure years of productivity, all day, every day.



HYDRAULIC CONTROL

Experience the convenience of hydraulic control for lifting and tilting, providing efficient and precise handling for all your material transport needs.

OIL-COOLED DISC BRAKES

Enjoy oil-cooled disc brakes for better braking and faster cycles, giving you the confidence to navigate and stop quickly. This enhancement significantly speeds up task completion and boosts overall productivity.

COMFORT & CONTROLS



▶ IMPROVED VISIBILITY

Benefit from improved operator visibility in all working positions, thanks to a wider mast window, repositioned hydraulic hoses, and a flat bar-style overhead guard.

▶ DELUXE SUSPENSION SEAT

The deluxe suspension seat is designed for operator comfort, offering a larger seat back angle, extended seat travel length, and operator's weight resistance on the front side, allowing for multiple adjustments to create the most comfortable seating experience.



▶ SPACIOUS OPERATOR COMPARTMENT

The cabin's ample legroom, adjustable steering column, and ergonomic operator pedals ensure ease of entry and exit for the operator.

▶ INTEGRATED INSTRUMENT PANEL

The centralized and user-friendly instrument panel enhances operator efficiency by providing easy access to critical information such as fuel gauge, engine hour meter, engine oil pressure, coolant levels, and more, ensuring operators are constantly informed about the vehicle's performance.

▶ CONVENIENCE TRAY



This truck comes equipped with a handy convenience tray that stores refreshments, paperwork, small tools, and more, for more efficiency on the job.

▶ EASY ACCESS



This forklift features a low step height, facilitating easy and safe operator entry and exit, complemented by an easy entry grab bar and an anti-slip step plate.

▶ OPTIMUM PEDAL SYSTEM



The Optimum Pedal System (OPS) – equipped with a new electronic accelerator – is designed to reduce operator fatigue and deliver the best driving experience for the operator.



SAFETY IN EVERY MOVE

▶ ADVANCED PROTECTION FOR YOU AND YOUR OPERATION

Bobcat forklifts have safety embedded in their DNA. Packed with tons of features that protect your health and your investment, these machines give you peace of mind in every task, every day.

▶ OPERATOR SENSING SYSTEM

Our Operator Sensing System (OSS) ensures that whenever the operator leaves the seat, the truck's travel and mast lifting functions automatically stop. This intelligent system prevents unintended forklift movements when the operator is not seated, enhancing safety in the workplace.



▶ MAST LOWERING INTERLOCK & TILT LOCK

The Mast Lowering Interlock & Tilt Lock system prevents unintentional lowering and tilting of the mast, safeguarding both the truck and the load while maintaining a secure work environment.



▶ BACKUP ALARM

The backup alarm emits a warning signal when the operator is driving in reverse, alerting those nearby and further ensuring safety in the workplace.



▶ REAR GRAB BAR

Boost your workplace safety with the help of a conveniently-placed rear grab bar that will allow you to have a stable point to hold onto when operating the truck in reverse or when maneuvering in tight spaces. It also features a horn button – ready to be pressed with your thumb whenever you need to.



▶ SEAT BELT INDICATOR

Enhance safety in your forklift operations with the seat belt indicator, to protect both your team and your business.



▶ PARKING BRAKE ALERT

Prioritize operator safety and safeguard against accidental movement with our parking brake warning system.



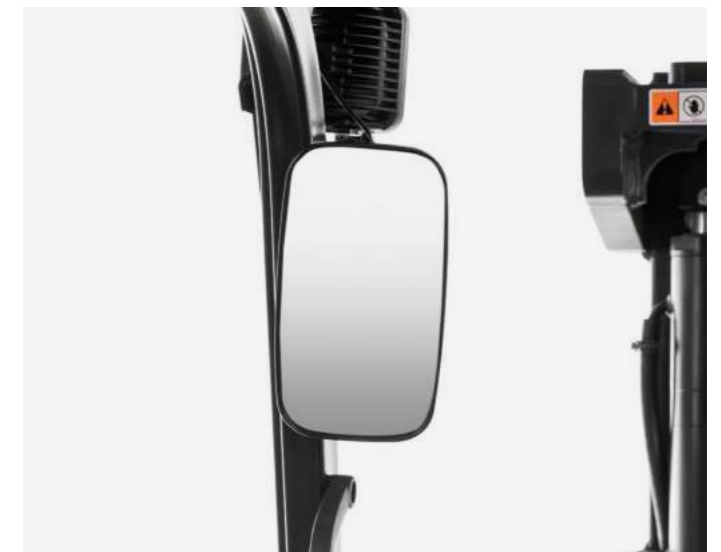
▶ BRIGHTER AND SAFER

Experience a brighter, safer, and more efficient workday with our front lights, combination lamps and additional rear light.



▶ REAR VIEW MIRROR

The rear view mirror provides more visibility, preventing accidents while reversing and avoiding collisions with objects and pedestrians, ensuring a safer work environment.



BUILT TO LAST

▶ A HERITAGE OF RELIABILITY

The superior hydrostatic steering system is designed for high shock absorption, while the rugged frame, fully floating drive axle, and oil-cooled brakes ensure years of productivity, all day, every day.



A robust frame designed to withstand the demands of industrial environments and regular heavy use

An engine with low vibration for a longer lifespan of components

The attachment hose of the front end can be replaced individually by separating the primary/secondary section, reducing TCO



No mechanical connections between the steering wheel and steer axle for longer maintenance intervals

Easy access to grease fittings for proper lubrication

Dual element air cleaner providing a stream of clean and refreshing cool air to enhance the efficiency of truck engine's intake system

THERE'S NO TIME FOR DOWNTIME. STAND UP TO EVERY TASK THAT COMES YOUR WAY. DAY AFTER DAY.



▶ EXTENSIVE DEALER NETWORK

You will receive the best after-sales service from your authorized local or national factory-trained dealer, backed by Bobcat's own customer service center. And Bobcat provides 100% parts inventory to insure any downtime is minimized. When you own a Bobcat forklift, our high quality, responsive customer support team comes with it.

▶ BOBCAT GENUINE PARTS

Quality components delivered to our dealers guarantee that all of our equipment is built to last, withstand the toughest conditions and provide reliable performance.

MAIN SPECIFICATIONS

| TECHNICAL DATA ACCORDING TO VDI 2198 | | | | | | | | | | |
|--------------------------------------|----|--------|--------|--------|--------|--------|---------|---------|---------|---------|
| | | D35S-5 | D40S-5 | D45S-5 | D50C-5 | D55C-5 | D40SC-5 | D45SC-5 | D50SC-5 | D55SC-5 |
| Load capacity | kg | 3 500 | 4 000 | 4 500 | 5 000 | 5 500 | 4 000 | 4 500 | 5 000 | 5 500 |
| Load center | mm | 600 | 600 | 600 | 600 | 600 | 500 | 500 | 500 | 500 |
| Wheelbase | mm | 2 000 | 2 000 | 2 100 | 2 100 | 2 100 | 2 000 | 2 000 | 2 100 | 2 100 |
| Height, mast lowered | mm | 2 255 | 2 230 | 2 230 | 2 380 | 2 380 | 2 225 | 2 230 | 2 230 | 2 380 |
| Free lift | mm | 160 | 160 | 160 | 170 | 170 | 160 | 160 | 160 | 170 |
| Lift | mm | 6 050 | 6 050 | 6 050 | 5 925 | 5 925 | 6 050 | 6 050 | 6 050 | 5 925 |
| Height, mast extended | mm | 4 265 | 4 270 | 4 420 | 4 470 | 4 470 | 4 265 | 4 270 | 4 420 | 4 470 |
| Height, overhead guard | mm | 2 225 | 2 230 | 2 230 | 2 230 | 2 230 | 2 225 | 2 230 | 2 230 | 2 230 |
| Height of seat | mm | 1 248 | 1 255 | 1 255 | 1 255 | 1 255 | 1 248 | 1 255 | 1 255 | 1 255 |
| Length to forkface | mm | 3 100 | 3 150 | 3 265 | 3 300 | 3 350 | 3 100 | 3 150 | 3 265 | 3 300 |
| Overall width | mm | 1 372 | 1 451 | 1 451 | 1 451 | 1 451 | 1 372 | 1 451 | 1 451 | 1 451 |
| Turning radius | mm | 2 770 | 2 820 | 2 865 | 2 930 | 2 990 | 2 770 | 2 820 | 2 865 | 2 930 |

Specification values quoted in this specification sheet have been rounded. Performance may vary depending on operating conditions. Products and specifications are subject to improvement and change without prior notice.



STANDARD EQUIPMENT & OPTIONS

| STANDARD EQUIPMENT & OPTIONS | |
|-------------------------------------|---|
| SAFETY | |
| Operator Sensing System | ✓ |
| Excellent visibility | ✓ |
| Parking brake | ✓ |
| Overhead guard | ✓ |
| Two front LED lights | ✓ |
| Load backrest | • |
| Front lights with combination lamps | • |
| Rear safety light | • |
| Emergency lamp and switch | • |
| Back up alarm | • |
| ERGONOMICS | |
| Tilt steering column | ✓ |
| Hydraulic levers control | ✓ |
| Spacious operator compartment | ✓ |
| Optimum Pedal System (OPS) | ✓ |
| Integrated instrument panel | ✓ |
| Convenience tray | ✓ |
| Modular cabin type A,B,C | • |
| Full cabin | • |
| Steering wheel knob | • |
| Rear grab bar | • |
| Rear view mirror | • |
| Heater & air conditioner | • |
| Radio and MP3 | • |
| Tool kit | • |
| Suspension seat | • |
| Seat belt interlock | • |

| STANDARD EQUIPMENT & OPTIONS | |
|---------------------------------------|---|
| PRODUCTIVITY | |
| Power steering | ✓ |
| High air Inlet from overhead guard | ✓ |
| Hydrostatic Steering System | ✓ |
| Power Reversal Transmission | ✓ |
| Auto tilt levelling | • |
| Mono pedal with autoshift controller | • |
| Defroster fan for full cabin | • |
| RELIABILITY | |
| Oil-cooled disc brakes (ODB) | ✓ |
| Vertical exhaust muffler | ✓ |
| Air cleaner | ✓ |
| Heat shield for battery | ✓ |
| Full floating drive axle | ✓ |
| Pre cleaner | • |
| Engine shutdown for power protection | • |
| SERVICEABILITY | |
| Dual element air cleaner and rain cap | ✓ |
| Centralized fuse and relay box | ✓ |
| Easy open side cover and floor plate | ✓ |
| Fuel cap with key | • |

*This list is based on factory data. Standard or optional can vary for specific countries.

• = option
 ✓ = standard
 – = not available

YOUR TRUSTED BUSINESS PARTNER

Your machine builds your business and reputation. Everything we put into Bobcat equipment is designed to make this possible. Strength, versatility, or agility, it's built around you.



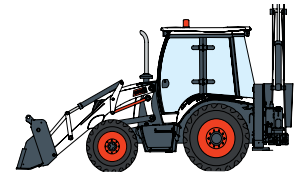
340 MACHINES / 150 ATTACHMENT FAMILIES / 1 TOUGH ANIMAL



SKID-STEER LOADERS



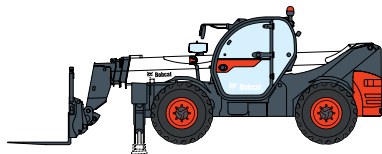
COMPACT TRACK LOADERS



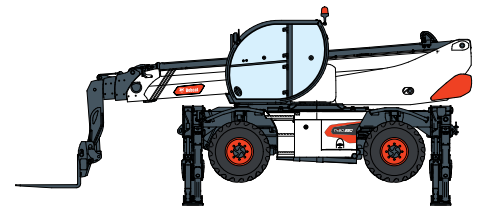
BACKHOE LOADERS



FORKLIFTS



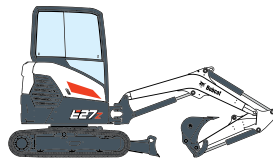
TELEHANDLERS



ROTARY TELEHANDLERS



LIGHT COMPACTION EQUIPMENT



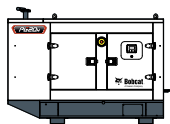
COMPACT EXCAVATORS



SMALL ARTICULATED LOADERS



MINI TRACK LOADER



GENERATORS



AIR COMPRESSORS



ATTACHMENTS

DOOSAN

Bobcat is a Doosan Company. Doosan is a global leader in construction equipment, power & water solutions, engines, and engineering proudly serving customers and communities for more than a century. | Bobcat and the Bobcat logo are registered trademarks of Bobcat Company in the United States and various other countries. ©Bobcat Company. All Rights Reserved.

Doosan Bobcat Korea Co., Ltd.

www.bobcat.com

May 2024



Bobcat®