



Bobcat[®]

One Tough Animal.

DIESEL & LPG FORKLIFTS

Pro 5-Series, Pneumatic, 1.5 to 2 ton capacity D15S-5 / D18S-5 / D20SC-5 / G15S-5 / G18S-5 / G20SC-5



ONE TOUGH ANIMAL

▶ OUR MISSION

We empower operators to accomplish more, while working in the toughest conditions and tightest situations. When our customers have the will, we provide the way.

INTRODUCTION



▶ BOBCAT'S HISTORY

In 1958, Melroe Manufacturing Company introduced a compact front-end loader that evolved quickly into the M400, the world's first true skid steer loader. The company soon adopted what became the world-famous 'Bobcat' brand – and its success paved the way for the global compact equipment industry we know today.

▶ YEARS OF EXPERIENCE

In 2021, Bobcat expanded its portfolio by acquiring Doosan Industrial Vehicle. This specialist in material handling equipment constructed its first forklift in 1968 and went on to establish a global presence with 400 dealers in 93 countries.



▶ BOBCAT TODAY

Bobcat is expanding its portfolio with the addition of forklifts and reach trucks for the material handling industry, offering a comprehensive lineup to meet all your intralogistics needs. Bobcat forklifts and reach trucks are produced in our factory in Korea, while our premium-quality warehouse equipment is made in Germany.



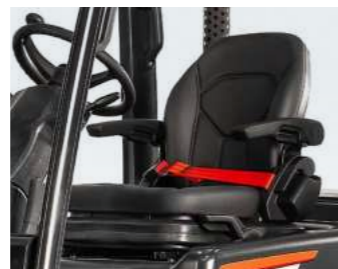
TOUGH, AGILE & SAFE

DESIGNED FOR PRODUCTIVITY

With high-performance engines, intuitive controls, superior operator comfort, and a host of safety features, Bobcat's DG18S-5 Series is ready to boost your business's productivity while keeping ownership costs low.



▶ ULTIMATE PRODUCTIVITY
Maximize productivity with our high performance, efficient engine, power reversal transmission, and low vibration technology. **P 6-7**



▶ COMFORTABLE ALL SHIFT LONG
Work comfortably through your shift with our standard quality-of-life features, including an ergonomic seat, instrument panel, tiltable steering column, anti-slip plate, and more. **P 8-9**

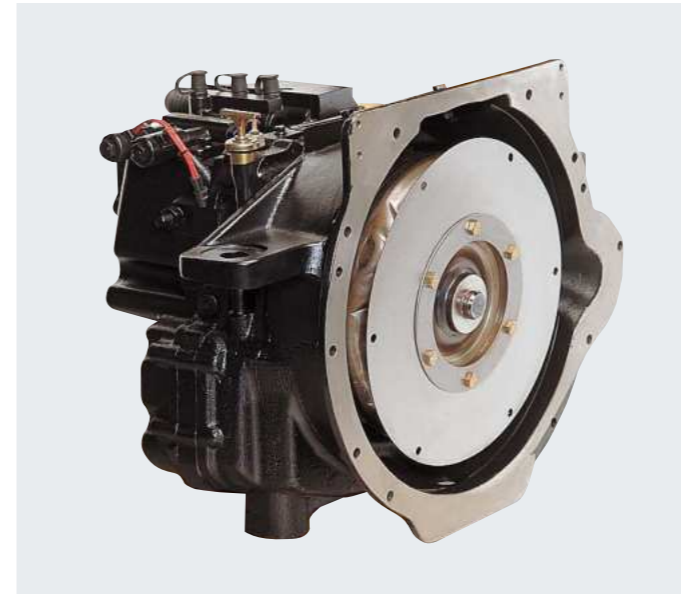


▶ SAFETY FIRST
Protect your investment, workforce, and handled goods with excellent all-around visibility, reliable oil-cooled brakes, and a host of other standard safety features. **P 10-11**



▶ MAXIMUM UPTIME
Reduce your total cost of ownership by extending service intervals and utilizing high-quality Bobcat genuine parts and consumables, for smoother and longer-lasting machine performance. **P 12-13**

OUTSTANDING PRODUCTIVITY



EFFORTLESS DIRECTIONAL CHANGES

The well-tested powershift transmission controls clutch oil pressure with precision, ensuring smooth shifts between forward and reverse. This control also prevents transmission damage, maintaining the forklift's strength and durability.



BUILT TOUGH

The superior hydrostatic steering system is designed for high shock absorption, while the rugged frame, fully floating drive axle, and oil-cooled brakes ensure years of productivity, all day, every day.



HYDRAULIC CONTROL

Experience the convenience of hydraulic control for lifting and tilting, providing efficient and precise handling for all your material transport needs.



OIL-COOLED DISC BRAKES

Enjoy oil-cooled disc brakes for better braking and faster cycles, giving you the confidence to navigate and stop quickly. This enhancement significantly speeds up task completion and boosts overall productivity.

COMFORT & CONTROLS



▶ IMPROVED VISIBILITY

Benefit from improved operator visibility in all working positions, thanks to a wider mast window, repositioned hydraulic hoses, and a flat bar-style overhead guard.



▶ DELUXE SUSPENSION SEAT

Achieve optimal work comfort with our deluxe suspension seat, featuring a larger recline, extended seat adjustment, and front-side weight resistance for personalized positioning.



▶ SPACIOUS OPERATOR COMPARTMENT

The cabin's ample legroom, adjustable steering column, and ergonomic operator pedals ensure ease of entry and exit for the operator.



▶ INTEGRATED INSTRUMENT PANEL

The centralized and user-friendly instrument panel enhances operator efficiency by providing easy access to critical information, including the fuel gauge, engine hour meter, engine oil pressure, coolant levels, and more. This ensures operators are constantly informed about the vehicle's performance.

▶ CONVENIENCE TRAY



This truck comes equipped with a handy convenience tray that stores refreshments, paperwork, small tools, and more.

▶ EASY ACCESS



With a low step height, an easy-entry grab bar, and an anti-slip step plate, this forklift ensures safe and convenient entry and exit for every operator.

▶ MONO PEDAL



The integration of acceleration and braking into one pedal streamlines operation with just one foot movement, boosting overall efficiency.



SAFETY IN EVERY MOVE

▶ ADVANCED PROTECTION FOR YOU AND YOUR OPERATION

Bobcat forklifts have safety embedded in their DNA. Packed with tons of features that protect operator well-being and your investment, these machines give you peace of mind in every task, every day.

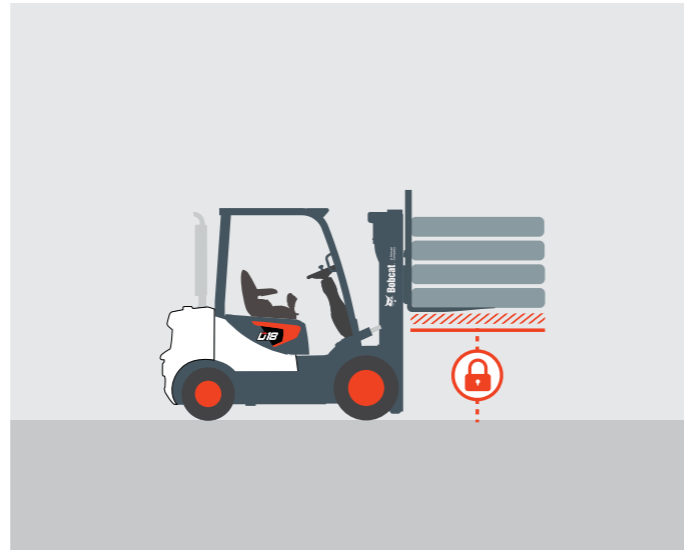
▶ OPERATOR SENSING SYSTEM

Our Operator Sensing System (OSS) ensures that whenever the operator leaves the seat, the truck's travel and mast lifting functions automatically stop. This intelligent system prevents unintended forklift movements when the operator is not seated, enhancing safety in the workplace.



▶ MAST LOWERING INTERLOCK & TILT LOCK

The Mast Lowering Interlock & Tilt Lock system prevents unintentional lowering and tilting of the mast, safeguarding both the truck and the load for a more secure work environment.



▶ BACKUP ALARM

The backup alarm emits a warning signal when the operator is driving in reverse, alerting those in the nearby vicinity.



▶ REAR GRAB BAR

Improve workplace safety with a rear grab bar, offering stability during reverse maneuvers and tight space navigation. Additionally, operators can effortlessly activate the horn with a push of a button conveniently located on the bar.



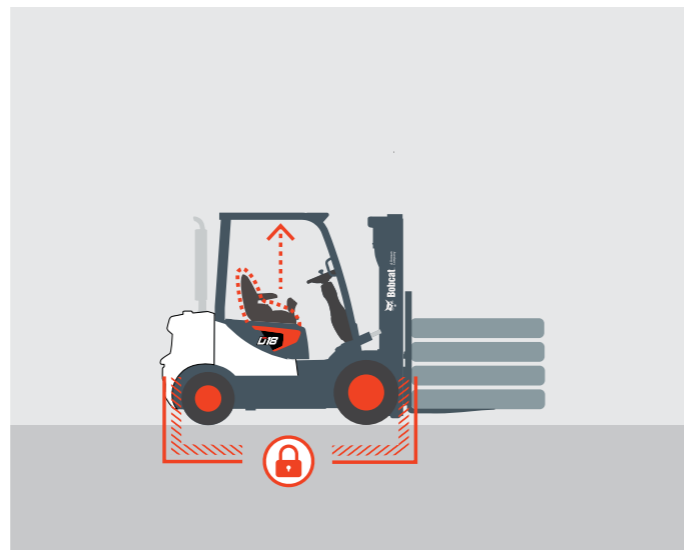
▶ SEAT BELT INDICATOR

Ensure the safety of both your team and your business with our seat belt indicator, reminding you to buckle up as soon as you take your seat.



▶ PARKING BRAKE

Prioritize operator safety while preventing accidental movements with our convenient parking brake.



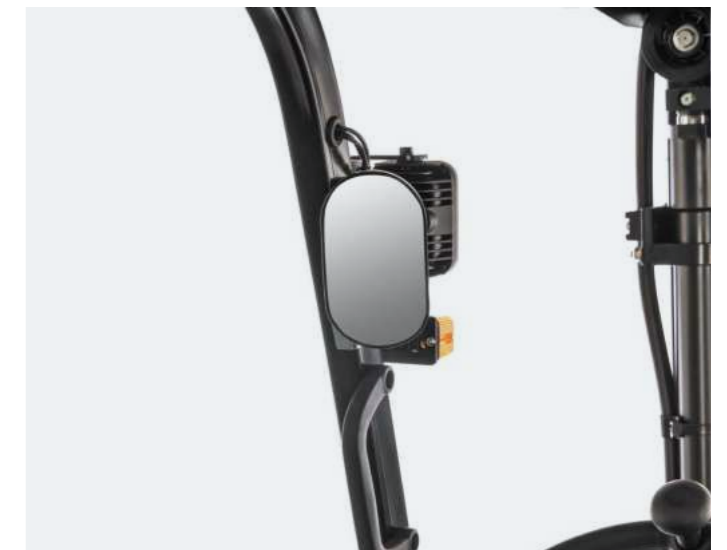
▶ BRIGHTER AND SAFER

Experience a brighter, safer, and more efficient workday with our front lights and combination lamp.



▶ REAR VIEW MIRROR

The rearview mirror enhances visibility, reducing accidents during reversing and preventing collisions with objects and pedestrians, creating a safer work environment.



BUILT TO LAST

▶ A HERITAGE OF RELIABILITY

The advanced hydrostatic steering system, fully floating drive axle, oil-cooled brakes, and robust build work together to provide you with a smooth, low-vibration ride that lasts for years to come.



High-strength frame and overhead guard withstand the demands of industrial environments and regular heavy-use

No mechanical connections between the steering wheel and steer axle for less downtime



Upgraded cooling with a standard aluminum radiator with large core

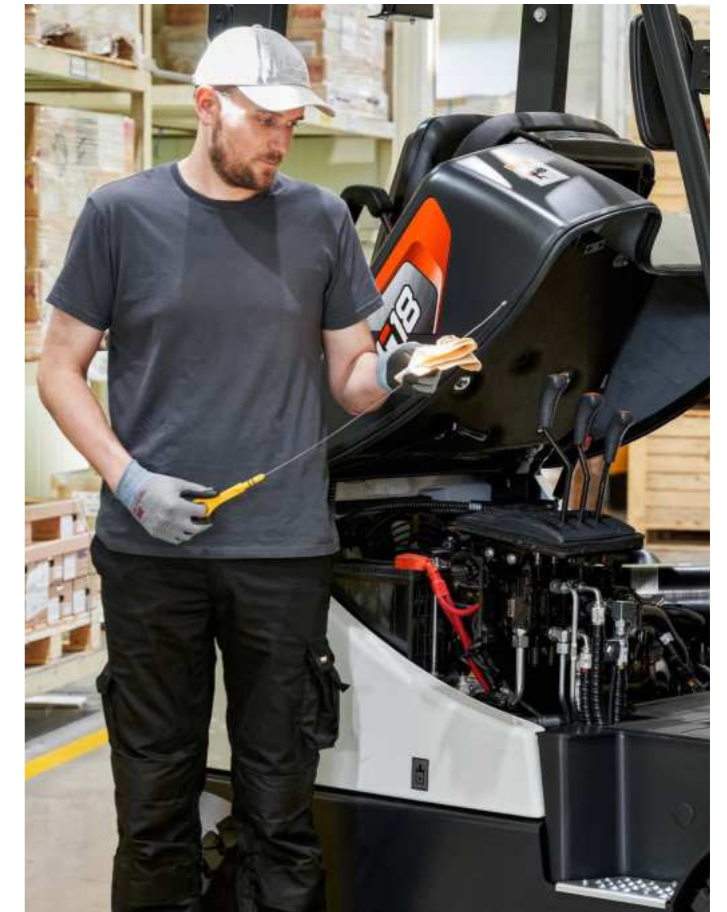
Dual element air cleaner providing a stream of clean and refreshing cool air to enhance the efficiency of the truck engine's intake system

Full floating drive axle requires less downtime for maintenance, ultimately leading to improved operational efficiency

Both the fuse and relay boxes are located in front of the engine to facilitate easy maintenance

J-Hook mounts distribute weight evenly, reducing stress on the axle

THERE'S NO TIME FOR DOWNTIME. STAND UP TO EVERY TASK THAT COMES YOUR WAY, DAY AFTER DAY.



▶ EXTENSIVE DEALER NETWORK

You will receive the best after-sales service from your authorized local or national factory-trained dealer, backed by Bobcat's own customer service center. And Bobcat provides 100% parts inventory to insure any downtime is minimized. When you own a Bobcat forklift, our high quality, responsive customer support team comes with it.

▶ BOBCAT GENUINE PARTS

Quality components delivered to our dealers guarantee that all of our equipment is built to last, withstand the toughest conditions and provide reliable performance.

MAIN SPECIFICATIONS

MAIN SPECIFICATIONS										
		D15S-5	D18S-5	D20SC-5	G15S-5	G18S-5	G20SC-5	G15S-5	G18S-5	G20SC-5
Power type		Diesel Euro Stage III A / EPA Interim Tier IV			LPG/Dual Fuel Non-certi			LPG EPA Tier III or Euro Stage V		
Load capacity	kg	1500	1750	2000	1500	1750	2000	1500	1750	2000
Load center	mm	500	500	500	500	500	500	500	500	500
Wheelbase	mm	1400	1400	1400	1400	1400	1400	1400	1400	1400
Height, mast lowered	mm	2185	2185	2185	2185	2185	2185	2185	2185	2185
Free lift	mm	135	135	140	135	135	140	135	135	140
Lift	mm	3000	3000	3000	3000	3000	3000	3000	3000	3000
Height, mast extended	mm	4355	4355	4360	4355	4355	4360	4355	4355	4360
Height, overhead guard	mm	2170	2170	2170	2170	2170	2170	2170	2170	2170
Height of seat	mm	1005	1005	1005	1005	1005	1005	1005	1005	1005
Length to forkface	mm	2170	2215	2250	2170	2215	2250	2170	2215	2250
Overall width	mm	1070	1070	1070	1070	1070	1070	1070	1070	1070
Turning radius	mm	1977	2022	2050	1977	2022	2050	1977	2022	2050

Note: Specification values quoted in this specification sheet has been rounded. Performance may vary due to operation conditions. Products and specifications are subject to improvement and change without prior notices.



STANDARD EQUIPMENT & OPTIONS

STANDARD EQUIPMENT & OPTIONS	
SAFETY	
Operator Sensing System	✓
Mast interlock – tilt, lift and lower	✓
Excellent visibility	✓
Overhead guard	✓
Parking brake	✓
Additional rear light	•
Rearview mirror	•
Amber strobe lights	•
Backup alarm	•
Interlock system with seat belt	•
ERGONOMICS	
Entry grip bar	✓
Anti-slip step plate	✓
Adjustable steering column	✓
Convenience tray	✓
Integrated instrument panel	✓
Suspension seat	✓
Rear grab bar with horn	•
Steering wheel knob	•
Mono-pedal	•
Heater	•
Fingertip	•

*This list is based on factory data. Standard or optional can vary for specific countries.

- = option
- ✓ = standard
- = not available

STANDARD EQUIPMENT & OPTIONS	
PRODUCTIVITY	
High-powered, fuel-efficient engine	✓
Emission Regulation Stage IIIA	✓
Power steering	✓
Autoshift (single, dual tires)	✓
Engine shutdown (for LPG)	✓
Tool kit	•
Hydraulic accumulator	•
Spark arrestor	•
Auto tilt leveling	•
Quick disconnect hose couplings	•
Swingout or swingdown LP MTG (for LPG)	•
RELIABILITY	
Oil-cooled disc brakes (ODB)	✓
Hydrostatic steering system	✓
Full floating drive axle	✓
Increased cooling capacity	✓
Dual element air cleaner	✓
Pre-cleaner	•
Radiator screen	•
Belly plate	•
SERVICEABILITY	
Centralized fuse and relay (junction) box	✓
Wide hood open angle	✓
Easyview	✓
Manual or automatic tilting	✓
Tankless air compressor	✓
Fuel cap with key (for Diesel)	•



YOUR TRUSTED BUSINESS PARTNER

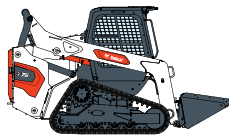
Your machine builds your business and reputation. Everything we put into Bobcat equipment is designed to make this possible. Strength, versatility, or agility, it's built around you.



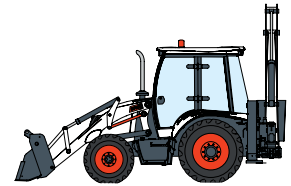
340 MACHINES / 150 ATTACHMENT FAMILIES / 1 TOUGH ANIMAL



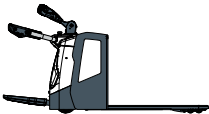
SKID-STEER LOADERS



COMPACT TRACK LOADERS



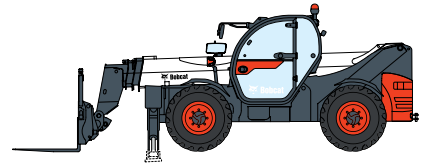
BACKHOE LOADERS



WAREHOUSE EQUIPMENT



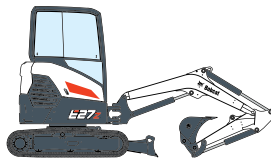
FORKLIFTS



TELEHANDLERS



LIGHT COMPACTION EQUIPMENT



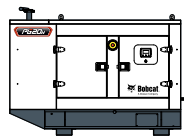
COMPACT EXCAVATORS



SMALL ARTICULATED LOADERS



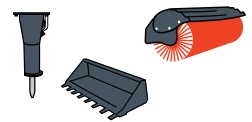
MINI TRACK LOADER



PORTABLE GENERATORS



AIR COMPRESSORS



ATTACHMENTS

DOOSAN

Bobcat is a Doosan Company. Doosan is a global leader in construction equipment, power & water solutions, engines, and engineering proudly serving customers and communities for more than a century. | Bobcat and the Bobcat logo are registered trademarks of Bobcat Company in the United States and various other countries. ©2024 Bobcat Company. All Rights Reserved.

Doosan Bobcat Korea Co., Ltd.



Bobcat®