



**Bobcat®**

*One Tough Animal.*

# LPG FORKLIFTS

7-Series, Pneumatic, 2.0 to 3.5 ton capacity    G20E-7 / G25E-7 / G30E-7 / G33E-7 / G35EC-7



# ONE TOUGH ANIMAL

**OUR MISSION**

We empower operators to accomplish more, while working in the toughest conditions and tightest situations. When our customers have the will, we provide the way.

**BOBCAT'S HISTORY**

In 1958, Melroe Manufacturing Company introduced a compact front-end loader that evolved quickly into the M400, the world's first true skid steer loader. The company soon adopted what became the world-famous 'Bobcat' brand – and its success paved the way for the global compact equipment industry we know today.



**YEARS OF EXPERIENCE**

In 2021, Bobcat expanded its portfolio by acquiring Doosan Industrial Vehicle. This specialist in material handling equipment constructed its first forklift in 1968 and went on to establish a global presence with 400 dealers in 93 countries.



**BOBCAT TODAY**

Bobcat is expanding its portfolio with the addition of forklifts and reach trucks for the material handling industry. Offering a comprehensive line-up that will meet all your intralogistics needs. Bobcat forklifts and reach trucks are produced in our factory in Korea, while our premium quality warehouse equipment is made in Germany.



# TOUGH, AGILE, & SAFE

## ► READY TO GIVE YOUR BUSINESS A LIFT

Give your business a boost with a LPG forklift that ticks all the boxes: a high-performance, powerful, and efficient engine; smooth and variable controls; and a full suite of safety features—all in a machine that is rugged, dependable, and easy to service, with a low total cost of ownership.



## ► ULTIMATE PRODUCTIVITY

Get more done daily, thanks to the high-performance yet efficient HMC LP 2.4L engine with 45.4 kW of power and 300 Nm torque, providing the best-in-class travel and lifting speeds.

**P 7**



## ► ALL-DAY COMFORT

Experience a more comfortable shift with a range of standard quality-of-life features, including an ergonomic seat, instrument panel, ample legroom, anti-slip plate, and more.

**P 8**



## ► DRIVEN BY SAFETY

Enjoy peace of mind provided by the machine's excellent all-around visibility, superb stability, and a full suite of safety features.

**P 10-11**



## ► MAXIMUM UPTIME

Reduce your total ownership costs by extending service intervals and utilizing high-quality Bobcat genuine parts and consumables which contribute to smoother and longer-lasting machine performance.

**P 12-13**

# OUTSTANDING PRODUCTIVITY

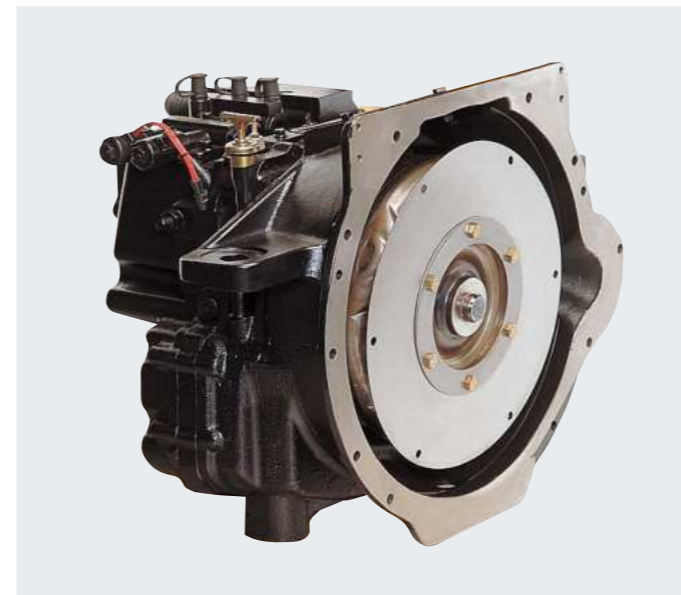


## EXCELLENT VISIBILITY

Thanks to the precisely designed overhead guard with angled roof bars, low cowl height, and excellent visibility through the mast, you have the best view of the task at hand, enabling you to accomplish more every day.

## POWERFUL LPG ENGINE

The high-performance yet efficient HMC LP engine, with 45.4 kW of power, provides best-in-class travel and lifting speeds. A silent chain timing belt and an aluminum cylinder block design keep the noise level to a minimum.



## EFFORTLESS DIRECTIONAL CHANGES

The well-tested powershift transmission precisely controls the clutch oil pressure, ensuring smooth shifts between forward and reverse. This careful control helps avoid transmission damage and makes the forklift stronger and longer-lasting.

## POWERFUL BRAKING POWER

Oil-cooled disc brakes offer outstanding stopping performance and extended durability with minimal maintenance. The brake systems are entirely sealed to safeguard against external contaminants, ensuring reliable operation.

# COMFORT & CONTROLS



## ▶ EASILY ADJUSTABLE SEAT & COLUMN

The premium suspension seat provides all-day comfort for long shifts and ample space for the operator. The seat and the steering wheel column are easy to adjust, allowing every operator to feel right at home in the cab.



## ▶ DELUXE SUSPENSION SEAT

The deluxe suspension seat prioritizes operator comfort with an adjustable seat back, extended seat travel length, and front-side weight resistance. These features enable multiple adjustments for the most comfortable seating experience.



## ▶ FULL OR MODULAR CABS

Equip your forklift with one of our factory-made cabs to conquer all weather conditions. Enhance comfort for all-day use by adding options such as a heater, operator fan, and power jack.



## ▶ REAR CAMERA DISPLAY

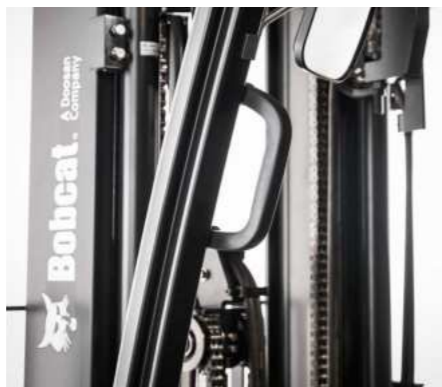
Equip your machine with a rear camera that feeds into the in-cab display when in reverse, ensuring you always have the best view of your workplace without sacrificing comfort.

## ▶ RADIO AND MP3 PLAYER



Add a radio and mp3 player to your cab to enjoy even the longest shifts.

## ▶ WELL-PLACED HANDLES



Stepping in and out of your vehicle is quick and comfortable, thanks to the well-placed entry bar and handles.

## ▶ ERGONOMIC CONTROLS



Thanks to the ergonomic design and perfect placement of control elements, operating this machine is as easy as can be.



# SAFETY IN EVERY MOVE

## ▶ ADVANCED PROTECTION FOR YOU AND YOUR OPERATION

Bobcat forklifts have safety embedded in their DNA. Packed with tons of features that protect you and your investment, these machines provide peace of mind in every task, every day.

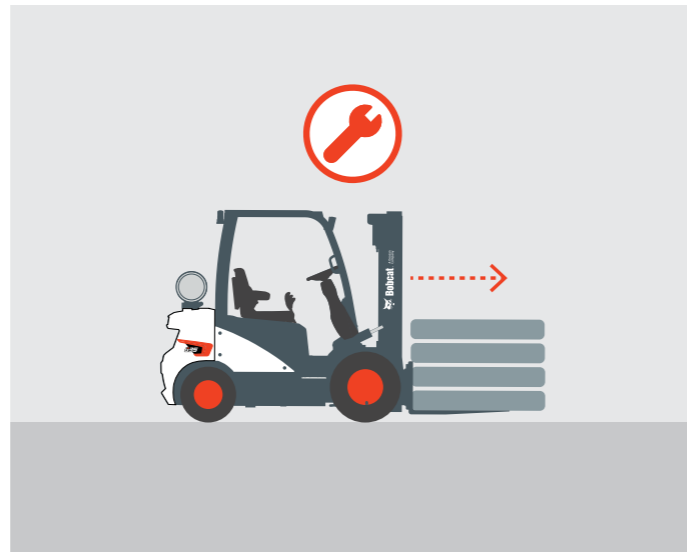
### ▶ OPERATOR SENSING SYSTEM (OSS)

The truck's travel and mast lifting functions stop when the operator leaves the seat, ensuring the forklift won't perform any unintended movements.



### ▶ LIMP HOME MODE

In the event of a critical issue, this feature enables the forklift to operate at reduced capacity, empowering operators to safely navigate to a designated area for inspection and repair.



### ▶ INTERLOCKING 4<sup>TH</sup> LEVER

The 4<sup>th</sup> lever will be locked until manually released by pressing the button on the lever. This guarantees load security, eliminating the risk of unintended release.



### ▶ WEIGHT SCALE

Never second-guess if you're overloading your forklift with our weight indicator or scale options.



### ▶ SEAT BELT SEQUENCE INTERLOCK

The operator must be seated with a fastened seatbelt to operate the truck.



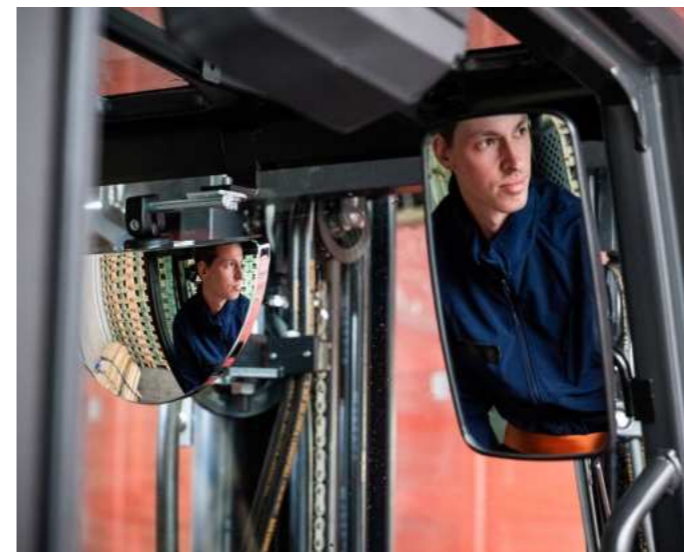
### ▶ GROUND SPEED CONTROL

To further enhance the safety of your truck and workplace, you can set up a speed limit to prevent the truck from going too fast. This limit can be customized for both forward and reverse directions.



### ▶ LARGE PANORAMIC MIRROR

The large panoramic mirror improves safety conditions and boosts overall productivity by enhancing rear visibility.



### ▶ POWERFUL LED LIGHTS

The powerful LED lights can brighten even the darkest corners of your workplace, ensuring you're always aware of your surroundings.



# BUILT TO LAST

## ▶ EXCELLENT RELIABILITY

Thanks to a powerful HMC engine, dust- and water-resistant parts, and shock-absorbing hydrostatic power steering, Bobcat's 7-Series LPG forklifts are built tough to provide you with maximum uptime and dependability.



Robust frame and overhead guard designed to withstand the demands of industrial environments and regular heavy use

Wide hood opening with hood locking cylinders, and a tool-less removable side panel for easy access to main components

J-Hook Mounts distribute weight evenly

No mechanical connections between the steering wheel and steer axle to prolong maintenance intervals

Oil-cooled disc brakes (ODB) with a lifespan of up to 20 000 hours

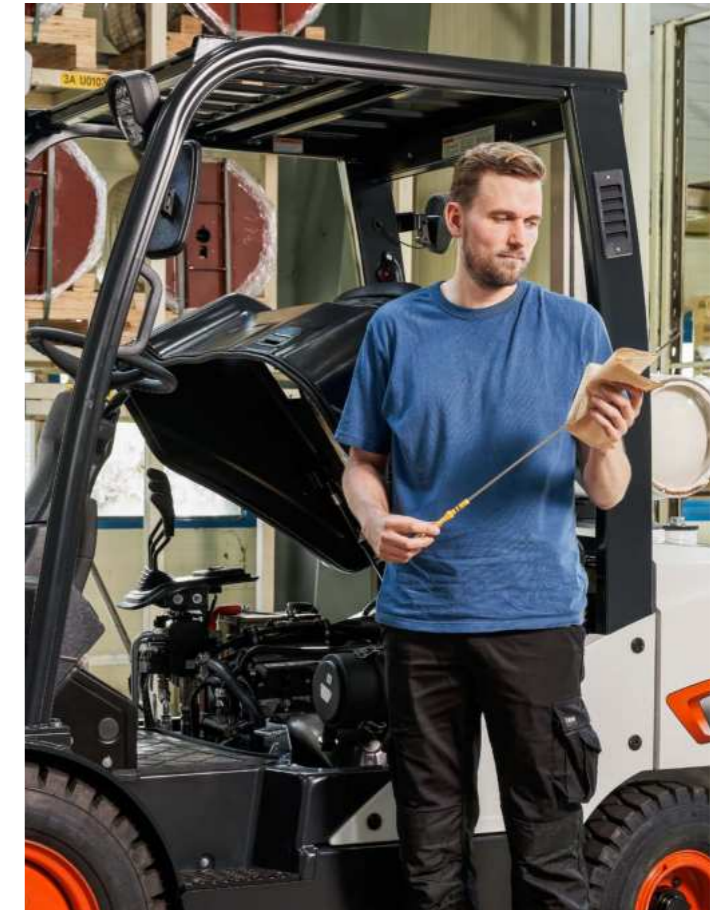
Large capacity radiator and optimized airflow in the counterweight enhances the reliability and the durability

Six roller carriage for superior strength and durability when handling wider and longer loads

U-joint isolates powertrain from shock and vibration to reduce engine problems and leaks

Durable cast iron housing for precise axle alignment and extended life, with a high-tensile alloy steel shaft to boost torque transmission

# THERE'S NO TIME FOR DOWNTIME. STAND UP TO EVERY TASK THAT COMES YOUR WAY. DAY AFTER DAY.



## ▶ EXTENSIVE DEALER NETWORK

You will receive the best after-sales service from your authorized local or national factory-trained dealer, backed by Bobcat's own customer service center. And Bobcat provides 100% parts inventory to insure any downtime is minimized. When you own a Bobcat forklift, our high quality, responsive customer support team comes with it.

## ▶ BOBCAT GENUINE PARTS

Quality components delivered to our dealers guarantee that all of our equipment is built to last, withstand the toughest conditions and provide reliable performance.

# MAIN SPECIFICATIONS

MAIN SPECIFICATIONS		G20E-7	G25E-7	G30E-7	G33E-7	G35EC-7
Load capacity	kg	2000	2500	3000	3250	3500
Load center	mm	500	500	500	500	500
Wheelbase	mm	1625	1625	1700	1700	1700
Height, mast lowered	mm	2175	2175	2165	2165	2165
Freelift	mm	147	147	152	152	152
Lift	mm	3230	3230	3230	3230	3000
Height, mast extended	mm	4490	4490	4490	4490	4260
Height, overhead guard	mm	2183	2183	2183	2183	2183
Height of seat	mm	1026	1026	1026	1026	1026
Length to forkface	mm	2530	2595	2700	2730	2765
Overall width	mm	1170	1170	1197	1197	1255
Turning radius	mm	2220	2265	2365	2395	2420

Note: Specification values quoted in this specification sheet have been rounded. Performance may vary depending on operating conditions. Products and specifications are subject to improvement and change without prior notice.



# STANDARD EQUIPMENT & OPTIONS

STANDARD EQUIPMENT & OPTIONS	
<b>SAFETY</b>	
Operator Sensing System	✓
Mast interlock – tilt, lift and lower	✓
LED front lights	✓
Panoramic and/or large rear-view mirror	✓
Ground speed control	•
Rear-view camera	•
Strobe lights	•
Blue safety lights	•
Backup alarm	•
4 <sup>th</sup> lever interlock	•
Autoshift controller	•
Weight indicator (hydraulic sensing type)	•
Weight scale (load cell type)	•
<b>RELIABILITY</b>	
Hydrostatic steering system	✓
Oil-cooled disc brakes (ODB)	✓
Tilt cylinder cover	✓
Rigid drive-axle (large king pin)	✓
Waterproof connectors	✓
Dual element air cleaner	✓
Pre-cleaner	•
Radiator screen	•
Vented side panel	•
Under protection (belly plate)	•
Engine guard	•
Open core radiator	•

\*This list is based on factory data. Standard or optional can vary for specific countries.

STANDARD EQUIPMENT & OPTIONS	
<b>PRODUCTIVITY</b>	
High-powered, fuel-efficient engine	✓
Emission Regulation Stage V	✓
Auto tilt leveling	•
Quick disconnect hose couplings	•
<b>SERVICEABILITY</b>	
Tool-less side panel / floor plate	✓
Junction box (centralized electric components)	✓
Wide hood open angle	✓
<b>ERGONOMICS</b>	
Excellent visibility	✓
Large entry grip bar	✓
Anti-slip step plate	✓
Telescopic steering column	✓
Modular Cab – Type A,B,C	•
Full cab	•
Additional sound suppression	•
Rear grab bar with horn	•
Document clip board	•
Cup holder	•
Cigar and power jack	•
Heater	•
Keyless ignition	•
Operator fan	•
Radio and MP3 player	•
Low fuel indicator	•
Suspension seat (with armrest and heating)	•

• = option    ✓ = standard    – = not available



# YOUR TRUSTED BUSINESS PARTNER

Your machine builds your business and reputation. Everything we put into Bobcat equipment is designed to make this possible. Strength, versatility, or agility, it's built around you.



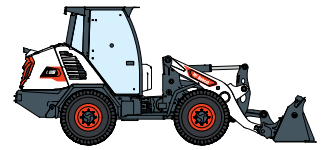
340 MACHINES / 150 ATTACHMENT FAMILIES / 1 TOUGH ANIMAL



SKID-STEER LOADERS



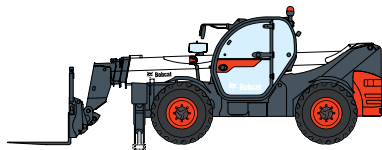
COMPACT TRACK LOADERS



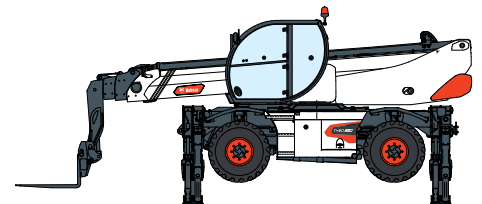
COMPACT WHEEL LOADERS



FORKLIFTS



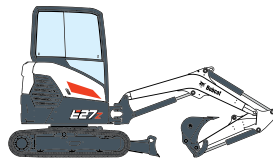
TELEHANDLERS



ROTARY TELEHANDLERS



LIGHT COMPACTION EQUIPMENT



COMPACT EXCAVATORS



COMPACT TRACTORS



SMALL ARTICULATED LOADERS



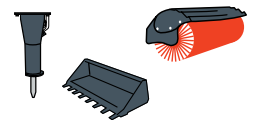
MINI TRACK LOADER



MOWERS



PORTABLE POWER



ATTACHMENTS

**DOOSAN**

Bobcat is a Doosan Company. Doosan is a global leader in construction equipment, power & water solutions, engines, and engineering proudly serving customers and communities for more than a century. | Bobcat and the Bobcat logo are registered trademarks of Bobcat Company in the United States and various other countries. ©Bobcat Company. All Rights Reserved.

Doosan Bobcat Korea Co., Ltd.

[www.bobcat.com](http://www.bobcat.com)

May 2024



**Bobcat**®