



Bobcat®

One Tough Animal.

ELECTRIC FORKLIFTS

9-Series, Electric 1.3 to 1.8 ton capacity, Stand-up Rider B15SU-9 / B18SU-9 / B20SU-9



ONE TOUGH ANIMAL

▶ OUR MISSION

We empower operators to accomplish more, while working in the toughest conditions and tightest situations. When our customers have the will, we provide the way.

INTRODUCTION

▶ BOBCAT'S HISTORY

In 1958, Melroe Manufacturing Company introduced a compact front-end loader that evolved quickly into the M400, the world's first true skid steer loader. The company soon adopted what became the world-famous 'Bobcat' brand – and its success paved the way for the global compact equipment industry we know today.



▶ YEARS OF EXPERIENCE

In 2021, Bobcat expanded its portfolio by acquiring Bobcat Industrial Vehicle. This specialist in material handling equipment constructed its first forklift in 1968 and went on to establish a global presence with 400 dealers in 93 countries.



▶ BOBCAT TODAY

Bobcat is expanding its portfolio with the addition of forklifts and reach trucks for the material handling industry. Offering a comprehensive line-up that will meet all your intralogistics needs. Bobcat forklifts and reach trucks are produced in our factory in Korea and China, while our premium quality warehouse equipment is made in Germany.



TOUGH, AGILE & SAFE

▶ READY TO GIVE YOUR BUSINESS A LIFT

The Stand-up rider electric forklift truck has the features of the standing operator type with low step height, competitive turning radius and 18" size drive tire suitable for warehouse, narrow space work, container and uneven road.

Power, excellent performance, driving comfort, durability, and outstanding Productivity will certainly satisfy you.



▶ DURABILITY & PRODUCTIVITY

The 9 Series provide smooth and durable operation in various work applications, which ultimately enhances productivity.

P 6-9



▶ ALL-DAY COMFORT

The various convenience features are equipped as standard, providing more comfortable working environment with less fatigue.

P 10-11



▶ SAFETY IN EVERY MOVE

Various safety features prevent unexpected safety accidents and protect operator.

P 12-13



▶ BETTER SERVICEABILITY

Doosan provides high-quality support, relying on its extensive dealer network.

P 14-15



DURABILITY GUARANTEED



RELIABLE AC CONTROLLER

Curtis AC controllers provide an unbeatable combination of power, performance and functionality. IP 65 rated controller is very reliable and well proven in tough applications.



RUGGED AND DURABLE TWIN DRIVE AXLE

Twin drive axle is controlled by integrated drive controller and the twin drive axle effectively transfers the power and torque of the drive motor to the final drive for smooth and quiet operation.



RELIABLE AC DRIVE & HYDRAULIC MOTORS

Maintenance Free Electric Motors by eliminating motor brushes and commutators. To ensure durability under various applications, IP43 rated drive / pump motors are installed as standard.



HYDRAULIC STEER AXLE MECHANISM

Quality of impact endurance benefits validated in the field for more than 10 years of the Doosan electric truck.

OUTSTANDING PRODUCTIVITY



▶ EXCELLENT VISIBILITY

The precise designed overhead guard profile with optimized bar thickness and arrangement provides a clear view upwards whilst ensuring ultimate strength for safety.

▶ SMOOTH AND SAFE ACCELERATION

Responsive and productive acceleration in early stage. Smooth acceleration in mid & high speed for safe & comfortable movement at narrow space.



▶ 3 POST OVERHEAD GUARD

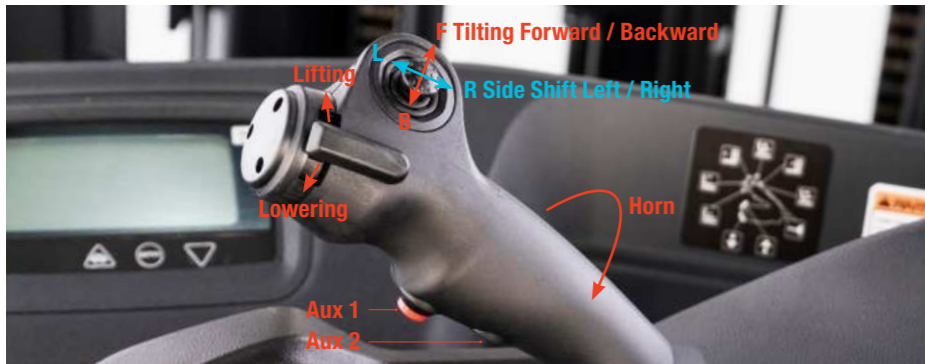
3 Post overhead guard with outer mast in-lined front legs improve the operator's visibility and comfort operating position.

▶ WIDE MAST VIEW

Neatly arranged hydraulic hoses and chains provide clear front visibility through the wide view mast.

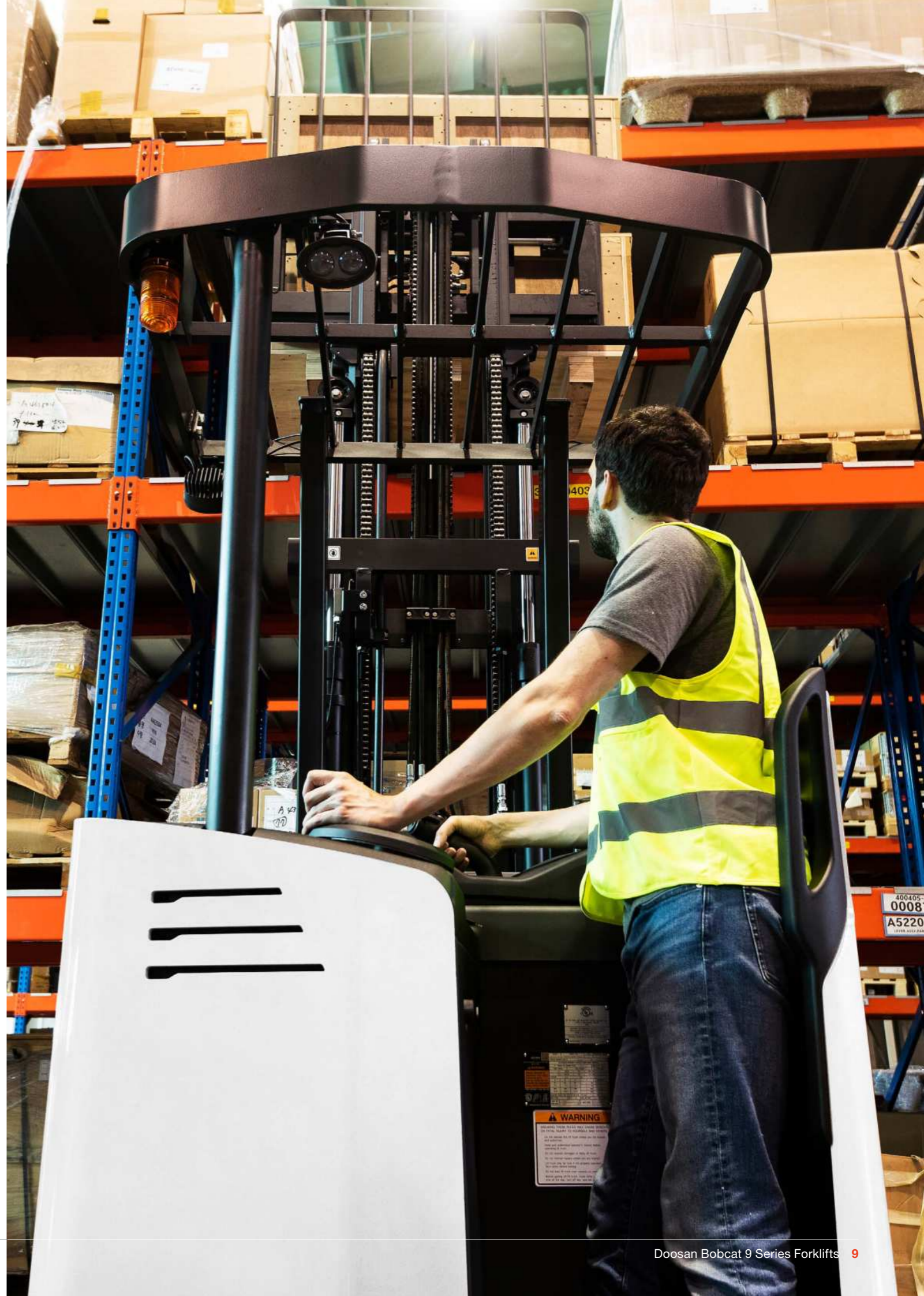
▶ AUTO TILT LEVELING

Return the mast to vertical position easily by tilt angle sensing, while both of mast forward and backward.



▶ ERGONOMIC MULTIFUNCTIONAL CONTROL HANDLE

Doosan's instinctive multi-function control handle is ergonomically positioned and provides smooth proportional control of all functions. The ability to operate multiple functions simultaneously increases productivity.



COMFORT & CONTROLS

► **WIDE OPERATING SPACE AND DASHBOARD ENABLE MORE COMFORTABLE AND PRODUCTIVE WORKING ENVIRONMENT.**



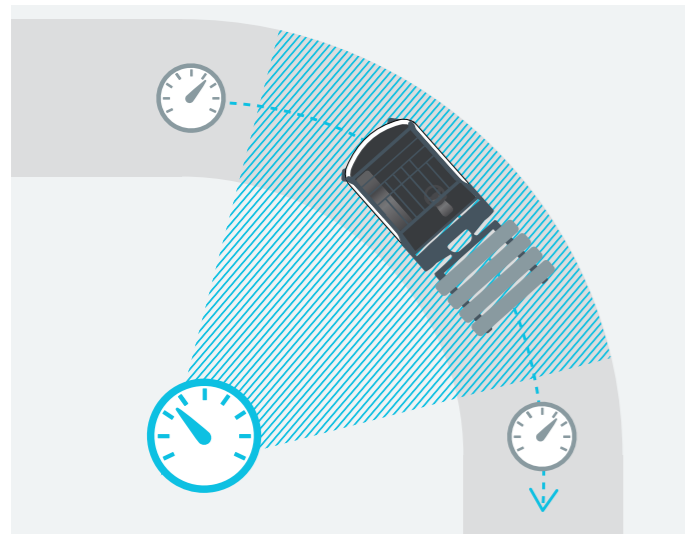
SAFETY IN EVERY MOVE

▶ ADVANCED PROTECTION FOR YOU AND YOUR OPERATION

Bobcat forklifts have safety embedded in their DNA. Packed with tons of features that protect your health and your investment, these machines give you peace of mind in every task, every day.

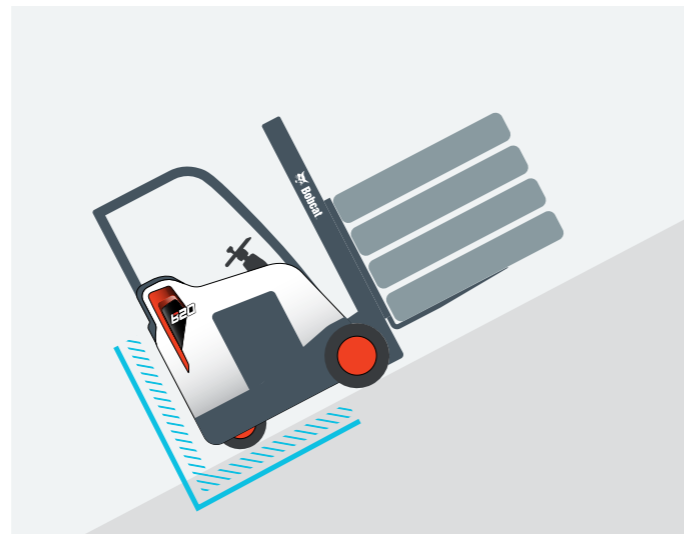
▶ AUTOMATIC SPEED CONTROL

It automatically reduces the travel speed to the optimal speed when cornering, reducing the risk of accidents or damage.



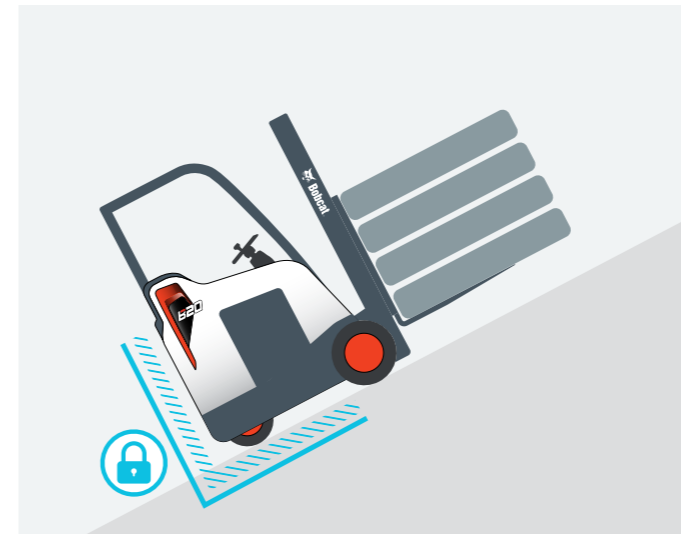
▶ ANTI ROLL BACK

The controller prevents the forklift from rolling back for 5 seconds when the truck is stopped on a slope.



▶ UNLIMITED RAMP HOLD (AUTO PARKING BRAKE)

The electro-magnetic auto parking brake (EPB) prevents the forklift from rolling back if the truck is stopped on a slope. Operators can dismount the truck easily without braking.



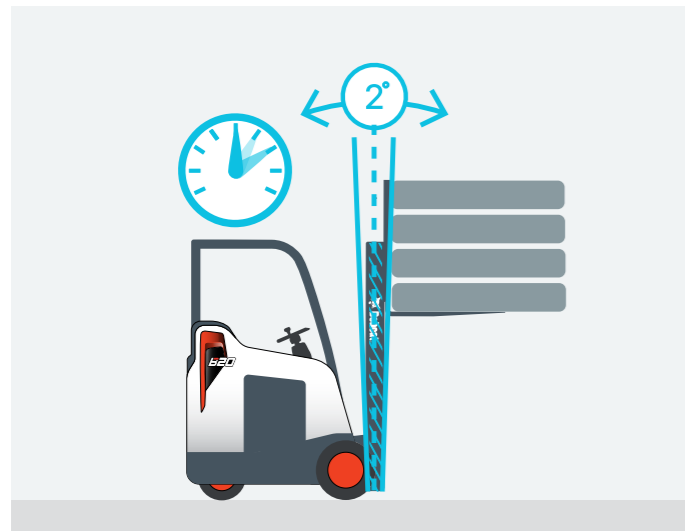
▶ MAST LOWERING INTER-LOCK & TILT LOCK (ISO3691)

The hydraulic locking system prevents natural lowering and tilting. It safeguards the work array, the truck and the load even if the operator leaves the truck unattended.



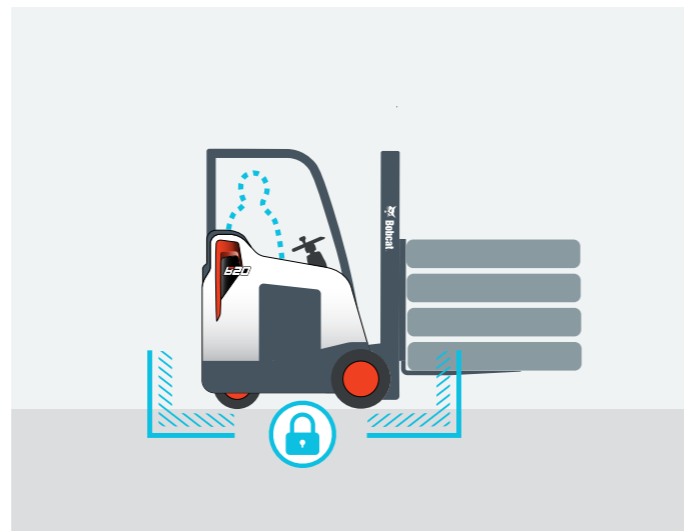
▶ GSS (GUARDIAN STABILITY SYSTEM)

- Decrease of travel speed (up to 50%) when the mast is raised above the primary stage.
- Forward tilt is reduced by 2 degrees when the mast is raised above the primary stage.
- Alarm sounds when the mast is raised above the primary stage with the mast tilted more than 2 degrees.



▶ OSS (OPERATOR SENSING SYSTEM)

Whenever the operator leaves the seat, the truck travel and mast lifting functions will stop. This systems avoids any unintended forklift movements when the operator is not seated.



▶ TILT SPEED CONTROL

Reduce the forward and backward tilting speed to minimize the shaking and impact at the end point.



▶ BATTERY SIDE GATE INTERLOCK

The warning alarm sounds and the digital display offers an error message when the interlock function is open.



▶ LED LIGHTS & BLUE LED SAFETY LIGHTS (OPTION)

Brighter and last longer than traditional sealed beams or halogen lights. To prevent accidents, a warning is given to pedestrians and other trucks by reflecting the blue lights forward or backward only / both.



BUILT TO LAST

▶ EXCELLENT RELIABILITY

Doosan provides high-quality support, relying on its extensive dealer network. No matter where you are located, highly-skilled professionals are always ready to help you, guaranteeing maximum uptime.



THERE'S NO TIME FOR DOWNTIME. STAND UP TO EVERY TASK THAT COMES YOUR WAY. DAY AFTER DAY.



▶ WIDE OPEN COVERS

Easy removable dashboard, Tool-less front cover and knee pad cover provide convenient access to all major components speeding repair time and reducing downtime.

▶ EASY TO ACCESS ELECTRIC PARTS

Major electric parts are concentrated for easy maintenance.

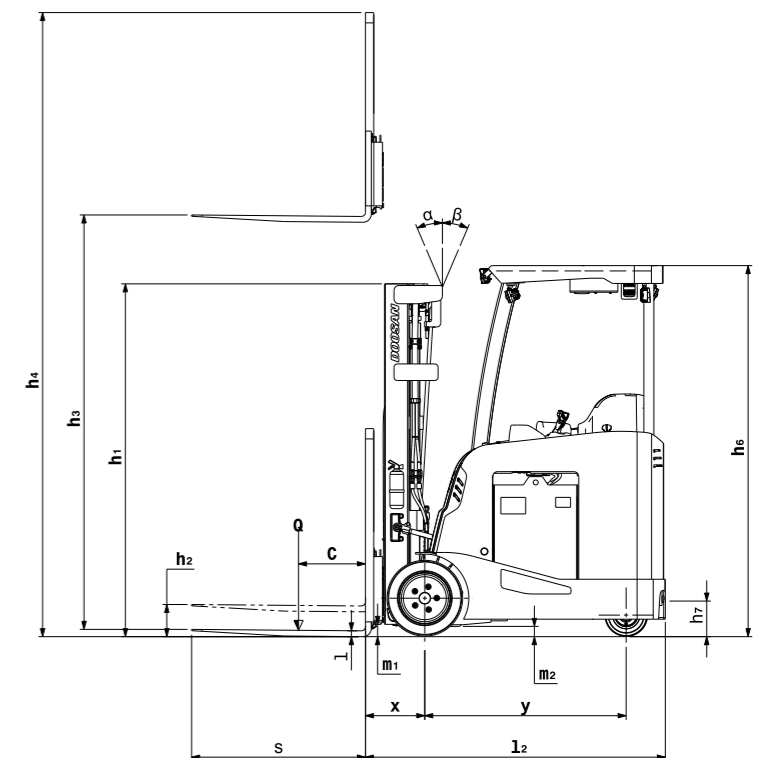
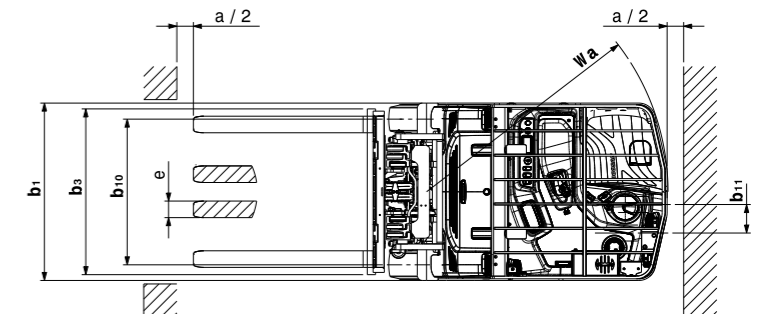
▶ EASY VIEW

To examine the forklift and set the program with notebook only. (without a special tool)



SPECIFICATIONS

TECHNICAL DATA ACCORDING TO VDI 2198							
CHARACTERISTICS	1.1	Manufacturer		BOBCAT	BOBCAT	BOBCAT	
	1.2	Manufacturer's type designation		B15SU-9	B18SU-9	B20SU-9	
		Battery compartment size	in(mm)	16.5(419)	18.2(462)	18.2(462) 20.5(521)	
	1.3	Drive : electric(battery or mains) ,diesel, petrol ,fuel gas, manual		Electric	Electric	Electric	
	1.4	Operator type : hand, pedestrian, standing, seated, order-picker		Standing	Standing	Standing	
WEIGHTS	1.5	Load capacity/rated load	lb(kg)	Q	3,000(1,360)	3,500(1,580) 4,000(1,810)	
	1.6	Load centre distance	in(mm)	c	24(610)	24(610) 24(610)	
	1.8	Load distance, centre of drive axle to fork	in(mm)	x	12.6(320)	12.6(320) 12.6(320)	
WHEELS & TYRES	1.9	Wheelbase	in(mm)	y	43.9(1,115) 45.7(1,160)	45.7(1,160) 48.0(1,220) 48.0(1,220)	
	2.1	Service weight (with min. weight of battery)	lb(kg)		8,620(3,910) 8,212(3,725)	8,940(4,055) 8,995(4,080) 9,325(4,230)	
	2.2	Axle loading, loaded front/rear	lb(kg)		10,070/1,550 (4,570/700)	10,050/1,160 (4,560/525) 11,005/1,435 (4,990/645) 11,000/1,495 (4,990/670) 11,955/1,370 (5,425/615)	
BASIC DIMENSIONS	2.3	Axle loading, unloaded front/rear	lb(kg)		4,565/4,055 (2,070/1,840) 4,640/3,570 (2,105/1,620)	4,685/4,255 (2,125/1,930) 4,815/4,180 (2,185/1,895) 4,870/4,455 (2,210/2,020)	
	3.1	Tires: pneumatic (P), superelastic (SE), cushion (C)			C	C	
	3.2	Tire size, front			18 X 7 X 12 1/8	18 X 7 X 12 1/8	
	3.3	Tire size, rear			10 X 5 X 6.5	10 X 5 X 6.5	
	3.5	Wheels, number front/rear (x=driven wheels)			2x / 2 (Dual)	2x / 2 (Dual)	
	3.6	Tread width, front	in(mm)	b10	35.1(892.5)	35.1(892.5) 35.1(892.5)	
	3.7	Tread width, rear	in(mm)	b11	6.7(170)	6.7(170) 6.7(170)	
	4.1	Tilt of mast/fork carriage forward (α)/backward(β)	deg	α / β	5 / 5	5 / 5	
	4.2	Height, mast lowered	in(mm)	h1	83.7(2,125)	83.7(2,125) 83.7(2,125)	
	4.3	Free lift	in(mm)	h2	36.4(925)	36.4(925) 36.4(925)	
	4.4	Lift (with FFT 3-stage mast)	in(mm)	h3	190(4,825)	190(4,825) 190(4,825)	
	4.5	Height, mast extended	in(mm)	h4	238.6(6,060)	238.6(6,060) 238.6(6,065)	
	4.7	Height to top of overhead guard	in(mm)	h6	88(2,235)	88(2,235) 88(2,235)	
	4.8	Seat height/stand height	in(mm)	h7	8.5(217)	8.5(217) 8.5(217)	
	PERFORMANCE	4.19	Overall length	in(mm)	l1	107.5(2,725) 109.0(2,765)	109.0(2,765) 111.5(2,830) 111.5(2,830)
4.20		Length to face of forks	in(mm)	l2	66.0 (1,675) 67.5 (1,715)	67.5 (1,715) 70.0 (1,780) 70.0 (1,780)	
4.21		Overall width	in(mm)	b1	42(1,070)	42(1,070) 42(1,070)	
4.22		Fork dimensions	mm(in)	s / e / l	1.4x3.9x41.3 (35x100x1,050)	1.4x3.9x41.3 (35x100x1,050) 1.5x3.9x41.3 (40x100x1,050)	
4.23		Fork carriage ISO 2328. Class/type A, B			ISO Class II	ISO Class II	
4.24		Fork carriage width	in(mm)	b3	38(973)	38(973) 38(973)	
4.24a		Fork Spacing (min/max)	in(mm)		9.4/35.5 (240/905)	9.4/35.5 (240/905) 9.4/35.5 (240/905)	
4.31		Ground clearance, with load, below mast	in(mm)	m1	2.5(70)	2.5(70) 2.5(70)	
4.32		Ground clearance, centre of wheelbase	in(mm)	m2	4(102)	4(102) 4(102)	
4.34.1		Aisle width for pallets 1000 x 1200 crossways	in(mm)	Ast	118(3,009) 120(3,052)	120(3,052) 122(3,110) 122(3,110)	
4.34.1		Aisle width for pallets 800 x 1200 lengthways	in(mm)	Ast	123(3,131) 125(3,174)	125(3,174) 127(3,232) 127(3,232)	
4.35		Turning radius	in(mm)	Wa	53.5(1,360) 55.2(1,400)	55.2(1,400) 57.5(1,460) 57.5(1,460)	
4.36		Internal turning radius	in(mm)	b13	0	0 0	
ELECTRIC		5.1	Travel speed, loaded / unloaded	mph(km/h)		7.5 / 7.5 (12.0 / 12.0)	7.5 / 7.5 (12.0 / 12.0) 7.5 / 7.5 (12.0 / 12.0)
		5.2	Lift speed, loaded / unloaded	fpm(mm/s)		65 / 110 (330 / 560)	60 / 110 (305 / 560) 55 / 110 (280 / 560)
	5.3	Lowering speed, loaded / unloaded	fpm(mm/s)		98 / 88 (500 / 450)	98 / 88 (500 / 450) 98 / 88 (500 / 450)	
	5.6	Maximum drawbar pull, loaded / unloaded, 5 minute rating	lb(N)		1,724(7,664) 1,660(7,380)	1,843(8193) 1,843(8193) 1,973(8,770)	
	5.8	Maximum gradeability, loaded / unloaded, 5 minute rating	%(deg)		15 / (8.5 /)	15 / (8.5 /) 15 / (8.5 /)	
OTHERS	5.10	Service brake			Elec / EAB	Elec / EAB	
		Parking brake			Auto-Electric	Auto-Electric	
	6.1	Drive motor rating S2 60 minute	hp(kW)		6.0(4.5)	6.0(4.5) 6.0(4.5)	
	6.2	Lifting motor rating at S3 15%	hp(kW)		12.1(9.0)	12.1(9.0) 12.1(9.0)	
	6.4	Battery voltage/nominal capacity K5	V/Ah		36 / 930 36 / 1,085	36 / 1,085 36 / 1,240 36 / 1,240	
6.5	Battery weight (min)	lb(kg)		1,995(905) 2,280(1,035)	2,280(1,035) 2,600(1,180) 2,600(1,180)		
	Battery compartment* L/W/H	in(mm)		16.5 / 38.9 / 31.0 (419 / 988 / 787)	18.2 / 38.9 / 31.0 (462 / 988 / 787) 18.2 / 38.9 / 31.0 (462 / 988 / 787) 20.5 / 38.9 / 31.0 (521 / 988 / 787) 20.5 / 38.9 / 31.0 (521 / 988 / 787)		
8.1	Type of drive control unit			Inverter AC	Inverter AC		
8.2	Working press for attachments	psi(bar)	System Attachment	2,930(202) 2,040(140)	3,176(219) 2,040(140) 3,408(235) 2,040(140)		
8.4	Sound level at the driver's ear according to EN 12 053	dB (A)		67	67 67		



*Please refer to the technical bulletin and contact your Bobcat representative for more detail information of battery size. This specification sheet to VDI guideline 2198 only gives the technical figures for the standard truck. Different tires, other masts, additional equipment etc. could give different figures.

MAST SPECIFICATIONS AND RATED CAPACITIES

B15SU-9														
Mast type	Battery compartment		Max. Fork Height		Mast Lowered Height		Extended Height		Free Lift		Tilt Angle		Load Capacities	
							w/ Load Backrest		w/ Load Backrest		Fwd	Bwd	LC 500mm	LC 24" (610mm)
	in	mm	in	mm	in	mm	in	mm	in	mm	deg	deg	kg	lb
FFT	16.5	419	157.5	4000	72.8	1850	206.1	5235	25.6	650	5	5	1500	3000
			190.0	4825	83.7	2125	238.6	6060	36.4	925	5	5	1500	3000
			204.7	5200	88.6	2250	253.3	6435	41.3	1050	5	5	1500	3000
			218.5	5550	93.1	2365	266.9	6780	45.9	1165	5	5	1450	2900
			237.0	6020	100.4	2550	285.6	7255	53.1	1350	5	5	1350	2850
	18.2	462	157.5	4000	72.8	1850	206.1	5235	25.6	650	5	5	1500	3000
			190.0	4825	83.7	2125	238.6	6060	36.4	925	5	5	1500	3000
			204.7	5200	88.6	2250	253.3	6435	41.3	1050	5	5	1450	2950
			218.5	5550	93.1	2365	266.9	6780	45.9	1165	5	5	1400	2900
			237.0	6020	100.4	2550	285.6	7255	53.1	1350	5	5	1350	2800

B18SU-9														
Mast type	Battery compartment		Max. Fork Height		Mast Lowered Height		Extended Height		Free Lift		Tilt Angle		Load Capacities	
							w/ Load Backrest		w/ Load Backrest		Fwd	Bwd	LC 500mm	LC 24" (610mm)
	in	mm	in	mm	in	mm	in	mm	in	mm	deg	deg	kg	lb
FFT	18.2	462	157.5	4000	72.8	1850	206.1	5235	25.6	650	5	5	1800	3500
			190.0	4825	83.7	2125	238.6	6060	36.4	925	5	5	1750	3500
			204.7	5200	88.6	2250	253.3	6435	41.3	1050	5	5	1700	3450
			218.5	5550	93.1	2365	266.9	6780	45.9	1165	5	5	1650	3350
			237.0	6020	100.4	2550	285.6	7255	53.1	1350	5	5	1400	3200
	20.5	520	157.5	4000	72.8	1850	206.1	5235	25.6	650	5	5	1800	3500
			190.0	4825	83.7	2125	238.6	6060	36.4	925	5	5	1800	3500
			204.7	5200	88.6	2250	253.3	6435	41.3	1050	5	5	1750	3500
			218.5	5550	93.1	2365	266.9	6780	45.9	1165	5	5	1700	3500
			237.0	6020	100.4	2550	285.6	7255	53.1	1350	5	5	1400	3350

B20SU-9														
Mast type	Battery compartment		Max. Fork Height		Mast Lowered Height		Extended Height		Free Lift		Tilt Angle		Load Capacities	
							w/ Load Backrest		w/ Load Backrest		Fwd	Bwd	LC 500mm	LC 24" (610mm)
	in	mm	in	mm	in	mm	in	mm	in	mm	deg	deg	kg	lb
FFT	20.5	520	157.5	4000	72.8	1850	206.3	5240	25.6	650	5	5	2000	4000
			190.0	4825	83.7	2125	238.8	6065	36.4	925	5	5	1950	3900
			204.7	5200	88.6	2250	253.5	6440	41.3	1050	5	5	1850	3800
			218.5	5550	93.1	2365	267.1	6785	45.9	1165	5	5	1800	3700
			237.0	6020	100.4	2550	285.8	7260	53.1	1350	5	5	1450	3400

Note : These load capacities are based on the standard chassis without side shifter. Products and specifications are subject to improvement and change without prior notices.

STANDARD EQUIPMENT & OPTIONS

STANDARD EQUIPMENT & OPTIONS	
SAFETY & STABILITY	
Anti roll back	✓
Automatic driving and tilt speed control	✓
Battery side gate interlock	✓
Electric parking brake	✓
GSS (Guardian Stability System)	✓
ISO 3691 Mast lowering inter-lock & tilt lock	✓
LED Lights	✓
OSS(Operator sensing system)	✓
Blue LED safety lamp	•
Hydraulic weight scale	•
OPERATOR COMFORT(ERGONOMICS)	
Adjustable height arm rest	✓
Easy and instinctive instrument panel	✓
Extended back rest with entry bar and Knee pad	✓
Floor plate suspension	✓
Large cup holder, 5v usb port & 12v power jack, clip board holder	✓
Low step height	✓
Storage pocket	✓
Key-less start	•
LED operator lamp and fan	•
Reverse steering	•

*This list is based on factory data. Standard or optional can vary for specific countries.

STANDARD EQUIPMENT & OPTIONS	
PRODUCTIVITY	
18" Large size drive tire	✓
Auto tilt leveling	✓
Ergonomic multifunctional control handle	✓
Excellent visibility	✓
Smooth and safe acceleration	✓
84.5"(2,146mm) Low overhead guard height	•
Bottler tilt and narrow carriage	•
Cold storage	•
Quick disconnect hydraulic connectors	•
DURABILITY & SERVICEABILITY	
Easy to access electric parts	✓
Easy view program (Parameter tuning)	✓
Full AC system	✓
IP43 Rated drive and hydraulic motors	✓
IP65 Rated curtis controller	✓
Robust frame structure and strong structure overhead guard	✓
Rugged and durable twin drive axle	✓
Tool-less front and knee pad covers	✓
Cushion poly tire	•
Drive motor upper protector	•

• = option
 ✓ = standard
 -- = not available

YOUR TRUSTED BUSINESS PARTNER

Your machine builds your business and reputation. Everything we put into Bobcat equipment is designed to make this possible. Strength, versatility, or agility, it's built around you.



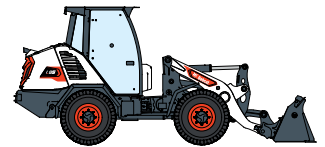
145 MACHINES / 46 PRODUCT FAMILIES / 1 TOUGH ANIMAL



SKID-STEER LOADERS



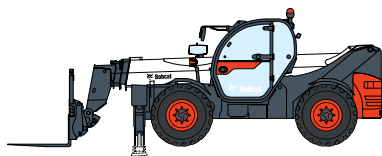
COMPACT TRACK LOADERS



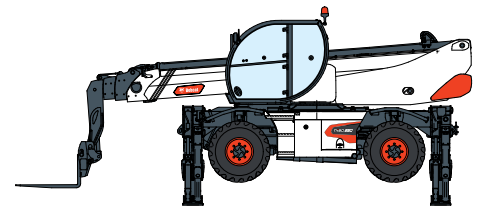
COMPACT WHEEL LOADERS



FORKLIFTS



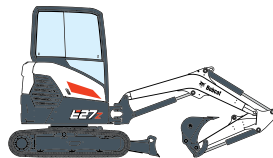
TELEHANDLERS



ROTARY TELEHANDLERS



LIGHT COMPACTION EQUIPMENT



COMPACT EXCAVATORS



COMPACT TRACTORS



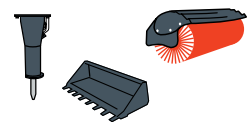
SMALL ARTICULATED LOADERS



MINI TRACK LOADER



MOWERS



ATTACHMENTS

DOOSAN

Bobcat is a Doosan Company. Doosan is a global leader in construction equipment, power & water solutions, engines, and engineering proudly serving customers and communities for more than a century. | Bobcat and the Bobcat logo are registered trademarks of Bobcat Company in the United States and various other countries. ©2024 Bobcat Company. All Rights Reserved.

Doosan Bobcat Korea Co., Ltd.

www.bobcat.com

©2024 BOBCAT



Bobcat®