



**Bobcat**<sup>®</sup>

*One Tough Animal.*

# ELECTRIC FORKLIFTS

2.0 to 3.5 ton capacity 4wheel B20NS / B25NS / B30NS / B35NS



# ONE TOUGH ANIMAL

**OUR MISSION**

We empower operators to accomplish more, while working in the toughest conditions and tightest situations. When our customers have the will, we provide the way.

**BOBCAT'S HISTORY**

In 1958, Melroe Manufacturing Company introduced a compact front-end loader that evolved quickly into the M400, the world's first true skid steer loader. The company soon adopted what became the world-famous 'Bobcat' brand – and its success paved the way for the global compact equipment industry we know today.



**YEARS OF EXPERIENCE**

In 2021, Bobcat expanded its portfolio by acquiring Bobcat Industrial Vehicle. This specialist in material handling equipment constructed its first forklift in 1968 and went on to establish a global presence with 400 dealers in 93 countries.



**BOBCAT TODAY**

Bobcat is expanding its portfolio with the addition of forklifts and reach trucks for the material handling industry. Offering a comprehensive line-up that will meet all your intralogistics needs. Bobcat forklifts and reach trucks are produced in our factory in Korea and China, while our premium quality warehouse equipment is made in Germany.



# EXPERIENCE THE FULLY ENHANCED VALUE OF NXE SERIES

## ► FAR BEYOND THE EXPECTATION,

Bobcat's new BNS series electric forklifts are equipped with various ergonomic design and safety features based on the outstanding performance and durability. It delivers optimal productivity and operator convenience.



### ► HIGH PERFORMANCE WITH OUTSTANDING DURABILITY

Performance is maximized by combining advanced design and the latest technology. Highly durable main components improve uptime and maintenance

cost. P 6-7



### ► EXCELLENT OPERATOR COMFORT

The various convenience features are equipped as standard, providing more comfortable working environment with less fatigue.

P 8-9



### ► ENHANCED SAFETY

Various safety features prevent unexpected safety accidents and protect operator.

P 10-11



### ► MAXIMUM UPTIME

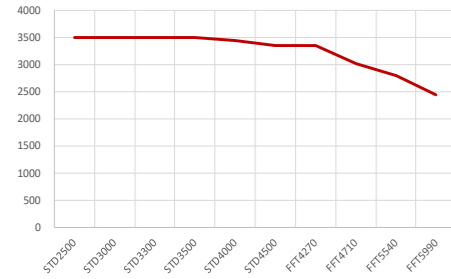
The robust components ensure durability and reliability. All primary components are easily accessible, making maintenance simple and efficient.

P 13

# HIGH PERFORMANCE WITH OUTSTANDING DURABILITY

## ▶ ADVANCED DURABILITY FOR YOU AND YOUR OPERATION

The combination of highly-efficient Curtis AC controller, high-performance motor and drive axle maximizes the performance, delivering the highest productivity in various applications.



## ▶ HIGH RESIDUAL CAPACITY

Various line-up from 2.0ton to 3.5ton. By increasing the stability, it provides high residual capacity even at a height of 4m. The system voltage of 3.0t/3.5t model is 80V, allowing more powerful operation when handling heavy loads.  
 B25NS: 2.1 ton capacity at 4.7m height.  
 B35NS: 3.0 t capacity at 4.7m height.

## ▶ E-MOTOR FOOT BRAKE (EFB, STANDARD TRIM)



The EFB activates braking by controlling the motor electrically instead of the conventional hydraulic brake. It brings less pedal force and ankle fatigue of operator. The simple brake structure makes it less troublesome and reduces maintenance costs.

## ▶ RELIABLE AC CONTROLLER



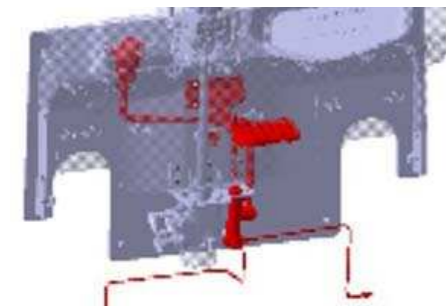
Curtis AC controller controls driving/hydraulic operation, resulting in optimum power and performance. IP67 rated water & dust proof feature protects against water even if it is sink in depth of 1m underwater.

## ▶ RELIABLE PERFORMANCE BY COMBINING ROBUST SINGLE DRIVE AXLE AND LOW NOISE/DURABLE MOTOR



Powerful single drive axle transmits power and torque of motor efficiently. IP54 rated durable AC motor protects motor and its components against liquid from any direction even in the rain.

## ▶ HYDRAULIC SHOE BRAKE



Generates great braking force  
 Precise control operation possible  
 Greater braking effort than EFB  
 Brake fluid management required.

## ▶ TILT CYLINDER BOOTS (OPT)

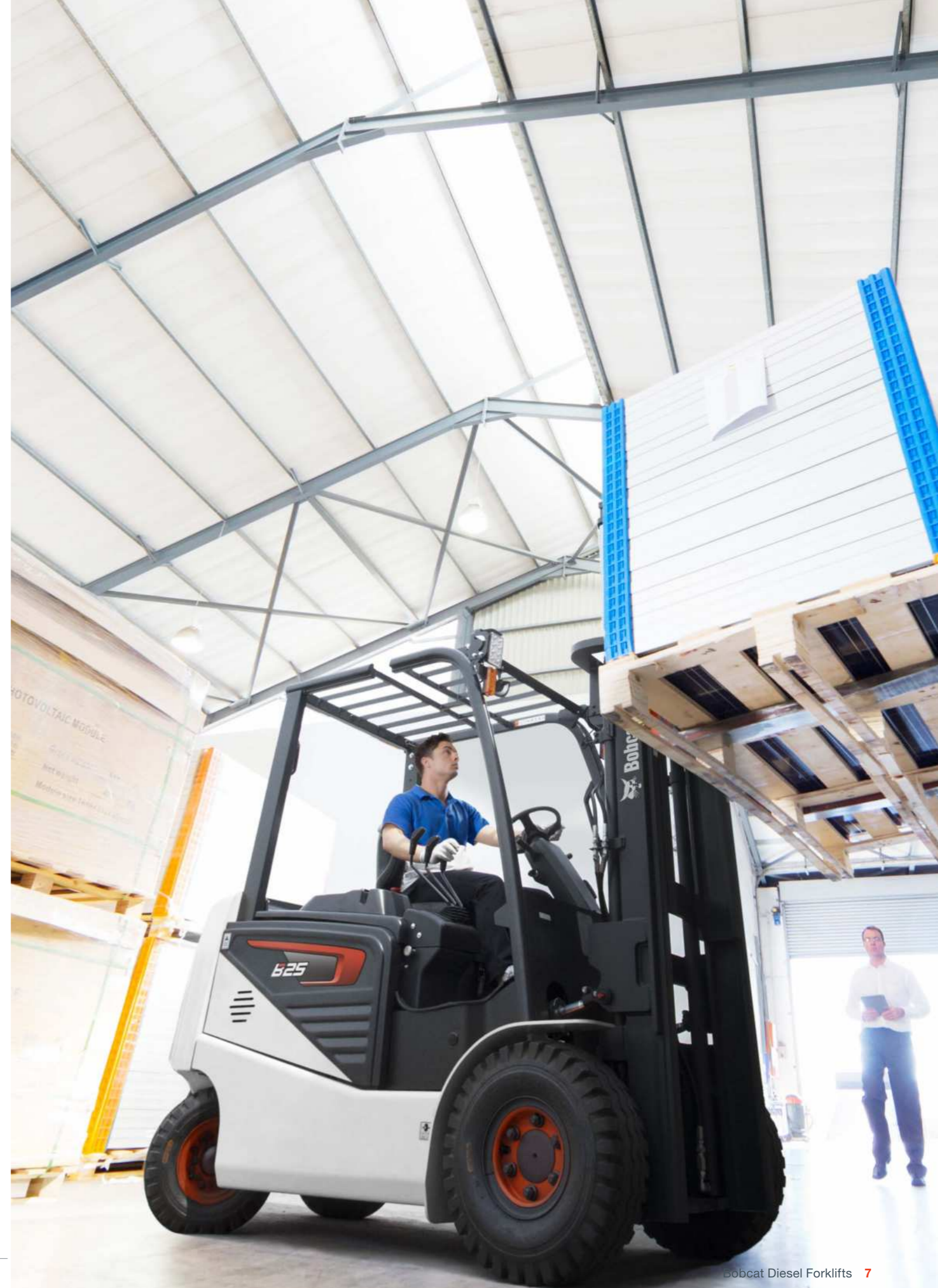


Prevent inflow of water and corrosion of the tilt cylinder rod.

## ▶ STABILITY OPTIMIZED



By applying the H-type axle, the overall layout is optimized and center of gravity is lowered. It enhances stability so that heavy cargo can be handled stably.





# EXCELLENT OPERATOR COMFORT

## ▶ LARGE ENTRY GRIP BAR AND ANTI-SKID STEP PLATE



The size of entry grip bar & step plate are enlarged. It helps safer get on/off.

## ▶ ERGONOMICALLY DESIGNED HYDRAULIC LEVERS WITH FORWARD AND BACKWARD SWITCH



Forward and backward switch is located on the hydraulic lever, enables more convenient switching direction with less movement.

## ▶ DUAL BATTERY CONNECTOR



Dual battery connector maximizes convenience of charging. Charger can be connected directly without disconnecting the battery connector.

## ▶ EXCELLENT FRONT VISIBILITY

Optimized layout of mast chains & structures provides excellent front visibility. Front cowl height is lowered to reduce blind spots. The over head guard thickness and layout are optimized for wide visibility.

## ▶ VARIOUS CONVENIENCE FEATURES



5V USB power / Document clip  
Cup holder / Storage box

## ▶ MAST LOWERING CUSHION



The hydraulic cushion minimizes the impact by reducing the lowering speed at the end.  
\*2-Stage mast only.

## ▶ LED LIGHT



Bright, long-lasting LED light equipped as standard provides brighter visibility.

## ▶ Compact steering wheel

Compact steering wheel offers steering convenience and reduces operator fatigue.

## ▶ Full color display

The full color display has good visibility even in the outside and can grasp the various status of the forklift easily.

## ▶ ERGONOMIC OPERATOR COMPARTMENT

Thanks to spacious leg room, operator works at comfortable posture during the long hours of working. Get on/off in a easy and safe way by lowering the height of step & floor plate



# ENHANCED SAFETY



## ▶ GSS (GUARDIAN STABILITY SYSTEM, BASIC)

Automatic speed control  
Seatbelt interlock  
Anti roll back / Unlimited ramp hold with electronic parking brake  
ISO3691 Hyd. locking valve  
Operator sensing system  
Low battery warning alarm  
Turtle mode

## ▶ GSS PLUS (GUARDIAN STABILITY SYSTEM, OPTIONAL)

Decrease of travel speed (up to 50%) when the mast is raised above the primary stage.  
Forward tilt is restricted by 2 degrees when the mast is raised above the primary stage.  
Alarm sounds when the mast is raised above the primary stage with the mast tilted more than 2 degrees.



## ▶ ANTI ROLL BACK

The controller prevents the forklift from rolling back for 5 seconds when the truck is stopped on a slope.



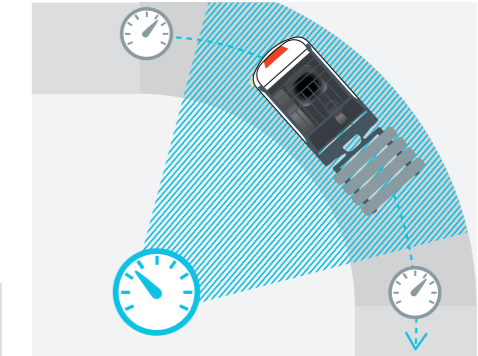
## ▶ SEATBELT INTERLOCK

If the seat belt is not fastened, driving and mast operation are restricted to prevent safety accidents.



## ▶ AUTOMATIC SPEED CONTROL

It automatically reduces the travel speed when cornering, reducing the risk of accidents or damage.



## ▶ SAFETY LIGHT (OPTION)

Warning is given to pedestrians by reflecting the blue light.



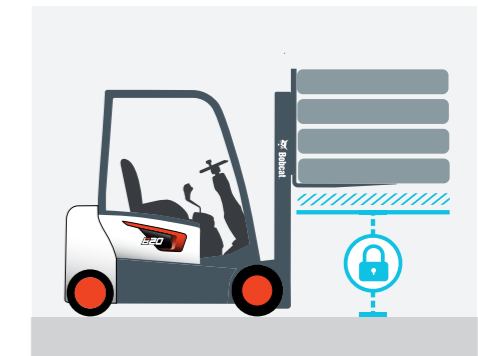
## ▶ FENCE LIGHT (OPTION)

Warning is given to pedestrians by reflecting red lines around the vehicle.



## ▶ ISO3691 HYD. LOCKING VALVE

If operator leaves or turns-off the truck, this system will automatically lock the hydraulic function, not allowing lifting, tilting, lowering.



## ▶ ELECTRONIC PARKING BRAKE (EPB)

The parking brake is activated automatically after 3 seconds of stopping to prevent accidents. The electronic parking brake (EPB) prevents the forklift from rolling back if the truck is stopped on a slope.



## ▶ OSS (OPERATOR SENSING SYSTEM)

OSS function avoids any unintended truck movements when the operator is not seated.  
Warning when operator leaves the seat without parking brake.  
Warning when operator drives without seatbelt fastened.  
Automatically stop the vehicle when operator leaves the seat.



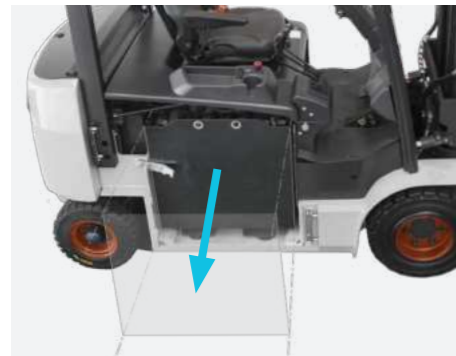
# BUILT TO LAST

## ▶ EXCELLENT RELIABILITY

Bobcat 7-series PLUS electric forklifts are built tough to provide maximum uptime and dependability thanks to a reliable AC controller, dust & water-resistant parts, and an additional drive motor cover.

**THERE'S NO TIME FOR DOWNTIME. STAND UP TO EVERY TASK THAT COMES YOUR WAY. DAY AFTER DAY.**

## ▶ BATTERY SIDE EXTRACT (OPTION)



Side lift in-out: The battery can be replaced by using another forklift from the side.  
Side Roll in-out: Rollers are installed on the frame, so battery can be replaced easily with less force.

## ▶ FINGERTIP CONTROL (OPTION)



The ergonomically designed fingertip controller enables precise and delicate control in a comfortable position, reducing fatigue and improving productivity.

## ▶ WEIGHT SCALE (OPTION)



The weight of the cargo can be easily measured by hydraulic type weight scale sensor. The measured weight is displayed on the additional display.

## ▶ AUTO TILT LEVELING (OPTION)



With the auto tilt function, mast can be moved in a vertical position easily during the forward tilting.

## ▶ COLD STORAGE (OPTION)



Cold storage option can be equipped along with the working condition. It is possible to work at -20°C environment.

## ▶ MONO PEDAL (OPTION)



Forward and backward switch function is integrated into the accelerator pedal for quicker and easier forward and backward operation.

## ▶ LI-ION BATTERY (OPTION)

Li-ion is the most advanced technology of battery. It has fast charging speed and nearly 4 times longer life cycle than lead-acid battery. It can be recharged quickly during the break time, truck can be operated for a long time, so there is no need to replace the spare battery. No harmful gas is emitted during charging and discharging. It makes cleaner and healthier work place. No need to add distilled water or electrolytes. It reduces maintenance cost in the long term. We provide 5-year or 2,500-cycle warranty.



### Easyview

To examine the forklift and set the program with notebook only (without a special tool)



### Junction Box

Fuse, CAN port are placed in a spot for quicker access and maintenance.



### Hood Locking Cylinder

It helps easy maintenance and prevents safety accident.

### Removable Side Cover

By applying knob bolt, Side & rear covers can be disassembled by hand.

# SPECIFICATIONS

TECHNICAL DATA ACCORDING TO VDI 2198								
CHARACTERISTICS	1.1	Manufacturer		Bobcat	Bobcat	Bobcat	Bobcat	
	1.2	Manufacturer's type designation		B20NS(Shoe)	B25NS(Shoe)	B30NS(Shoe)	B35NS(Shoe)	
	1.3	Drive : electric(battery or mains) ,diesel, petrol ,fuel gas, manual		Electric	Electric	Electric	Electric	
	1.4	Operator type : hand, pedestrian, standing, seated, order-picker		Seated	Seated	Seated	Seated	
	1.5	Load capacity/rated load kg(lb)	kg	Q	2000	2500	3000	3500
	1.6	Load centre distance	mm	c	500	500	500	500
	1.8	Load distance, centre of drive axle to fork	mm	x	457	457	457	462
	1.9	Wheelbase	mm	y	1560	1560	1710	1710
	WEIGHTS	2.1	Service weight (with min. weight of battery)	kg		3810(3910)	4150(4250)	4746(4846)
2.2		Axle loading, loaded front/rear	kg		5190/620(5164/746)	5979/671(5941/809)	6885/861(6958/888)	7760/970(7830/1000)
2.3		Axle loading, unloaded front/rear	kg		1658/2152(1944/1966)	1830/2320(1915/2335)	2206/2540(2279/2567)	2288/2942(2360/2970)
WHEELS & TYRES	3.1	Tires: pneumatic (P), superelastic (SE), cushion (C) SE			P / SE	P / SE	P / SE	SE
	3.2	Tire size, front			23X9-10	23X9-10	23x10-12	23x10-12
	3.3	Tire size, rear			18x7-8	18x7-8	18x7-8	18x7-8
	3.5	Wheels, number front/rear (x=driven wheels)			2x/2	2x/2	2x/2	2x/2
	3.6	Tread width, front	mm	b10	1019	1019	1014	1014
	3.7	Tread width, rear	mm	b11	995	995	995	995
BASIC DIMENSIONS	4.1	Tilt of mast/fork carriage forward ( $\alpha$ )/backward( $\beta$ )	deg	$\alpha / \beta$	6 / 10	6 / 10	6 / 10	6 / 10
	4.2	Height, mast lowered	mm	h1	2045	2045	2045	2045
	4.3	Free lift	mm	h2	150	150	150	150
	4.4	Lift (with STD 2-stage mast)	mm	h3	3000	3000	3000	3000
	4.5	Height, mast extended	mm	h4	4247	4247	4247	4252
	4.7	Height to top of overhead guard	mm	h6	2180	2180	2180	2180
	4.8	Seat height/stand height	mm	h7	1183	1183	1183	1183
	4.12	Towing coupling height	mm	h10	360	360	360	360
	4.19	Overall length	mm	l1	3360	3400	3570	3600
	4.2	Length to face of forks	mm	l2	2310	2350	2520	2550
	4.21	Overall width	mm	b1	1244(1300)	1244(1300)	1244(1300)	1244(1300)
	4.22	Fork dimensions	mm	s / e / l	45/100/1050	45/100/1050	45/122/1050	50/122/1050
	4.23	Fork carriage ISO 2328. Class/type A, B			II	II	III	III
	4.24	Fork carriage width	mm	b3	1102	1102	1116	1116
	4.24a	Fork Spacing (min/max)	mm		250/1032	250/1032	272/1104	272/1104
	4.31	Ground clearance, with load, below mast	mm	m1	140	140	140	140
	4.32	Ground clearance, centre of wheelbase	mm	m2	125	125	125	125
	4.34.1	Aisle width for pallets 1000 x 1200 crossways	mm	Ast	3697	3717	3957	3962
4.34.1	Aisle width for pallets 800 x 1200 lengthways	mm	Ast	3897	3917	4157	4162	
4.35	Turning radius	mm	Wa	2040	2060	2300	2300	
4.36	Internal turning radius	mm	b13	650	650	677	677	
PERFORMANCE	5.1	Travel speed, loaded / unloaded	km/h		14/15	14/15	14/15	14/15
	5.2	Lift speed, loaded / unloaded	mm/s		320/450	300/450	280/400	250/400
	5.3	Lowering speed, loaded / unloaded	mm/s		500/460	500/460	380/365	380/365
	5.6	Maximum drawbar pull, loaded / unloaded, 5 minute rating	N		10910 / 10500	10910 / 10700	14460 / 13560	14460 / 13860
	5.8	Maximum gradeability, loaded / unloaded, 5 minute rating	%		15 / 27	15 / 25	15 / 27	15 / 25
	5.10	Service brake		Entry/Standard		Mechanical (Shoe) / Electric		
		Parking brake		Entry/Standard		Mechanical / EPB(Electronic parking brake)		
	ELECTRIC	6.1	Drive motor rating S2 60 minute	kW	Entry/Standard	11/9	11/9	16.6/12
6.2		Lifting motor rating at S3 15%	kW		12/14	12/14	13.5/16	13.5/16
6.3		Battery type			Lead-acid	Lead-acid	Lead-acid	Lead-acid
6.4		Battery voltage/nominal capacity K	V/Ah		48/600	48/600	80/420	80/480
6.5		Battery weight	kg		1000	1000	1582	1582
	Battery Compartment L/W/H	mm		570x1028x755	570x1028x755	710x1028x745	710x1028x745	
OTHERS	8.1	Type of drive control unit			AC	AC	AC	AC
	10.1	Working press for attachments	bar	System	200	200	200	200
				Attachment	200	200	200	200
10.7	Sound level at the driver's ear according to EN 12 053	dB (A)		68	68	68	68	

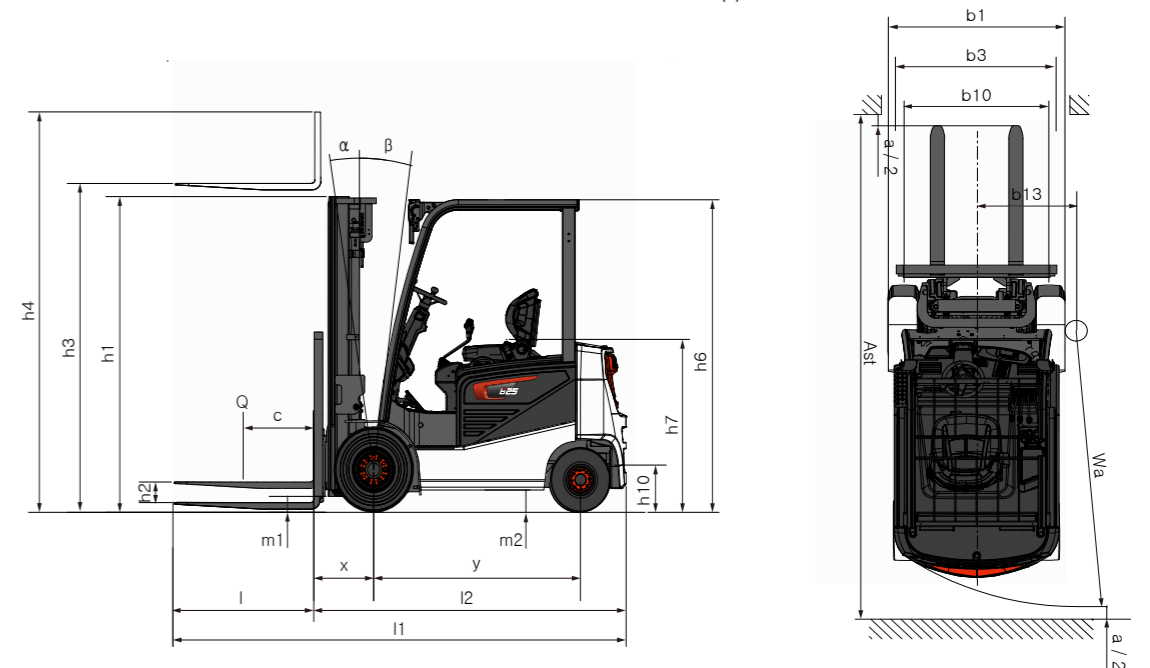
\*Please refer to the technical bulletin and contact your Bobcat representative for more detail information of battery size. This specification sheet to VDI guideline 2198 only gives the technical figures for the standard truck. Different tires, other masts, additional equipment etc. could give different figures.

# STANDARD EQUIPMENT & OPTIONS

STANDARD FEATURES AND OPTIONAL EXTRAS			STANDARD FEATURES AND OPTIONAL EXTRAS		
CHASSIS	ENTRY TRIM (E)	STANDARD TRIM (S)	PRODUCTIVITY		E S
Line up	2.0T / 2.5T / 3.0T / 3.5T		Dual battery connector	•	✓
System voltage	2.0/2.5T : 48V, 3.0/3.5T : 80V		SLIO(Side lift in-out)	•	•
Controller	IP67 Curtis AC controller		SRIO(Side battery roll in-out)	•	•
Drive/HYD motor	IP54 AC Motor		Auto tilt leveling	•	•
Service brake	Mechanical (Shoe)	Electric	Weight scale	•	•
Parking brake	Mechanical	Electric	Mono pedal	•	•
CONTROL VALVE			Li-ion battery		E S
Lever type, Deck mounted		✓ -			
Lever type, Deck mounted, ISO3691		• -			
Lever type, Deck mounted, F/R switch, ISO3691		- ✓			
Fingertip, ISO3691		- •			
SEAT			SERVICEABILITY		E S
Basic - Static/Suspension		(1) (2)	Hood -locking type	✓	✓
Deluxe(Sears) - Static/Suspension		• •	Toolless side cover	✓	✓
Premium(Grammer)		- •			
LIGHT			DURABILITY		E S
Font light -LED		✓ ✓	Tilt cylinder boots	•	•
Font light -LED with combi lamp		• •	Under cover	•	•
Rear light - LED		• •			
Strobe light		• •			
CONVENIENCE			SAFETY		E S
Ergonomic operator compartment		✓ ✓	GSS system (Basic)	✓	✓
Large entry grip bar		✓ ✓	- Cornering speed control	✓	✓
Tilting steering column		✓ ✓	- Seatbelt interlock	✓	✓
USB power socket		✓ ✓	- OSS (Operator sensing system)	✓	✓
Document clip/Cup holder/Storage box		✓ ✓	- Anti roll back / Unlimited ramp hold	✓	✓
Compact steering wheel		✓ ✓	- Turtle mode	✓	✓
Display		(3) (4)	- Low battery warning alarm	✓	✓
NFC Tag Start		• •	Rear grip bar with horn	•	•

\* Remark : This list is based on factory data. Standard or optional can vary for specific countries.

- = option
- ✓ = standard
- = not available
- (1) Static
- (2) Suspension
- (3) Mono color
- (4) Full color





# YOUR TRUSTED BUSINESS PARTNER

Your machine builds your business and reputation. Everything we put into Bobcat equipment is designed to make this possible. Strength, versatility, or agility, it's built around you.



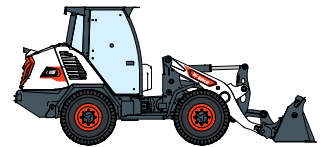
145 MACHINES / 46 PRODUCT FAMILIES / 1 TOUGH ANIMAL



SKID-STEER LOADERS



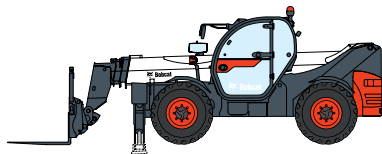
COMPACT TRACK LOADERS



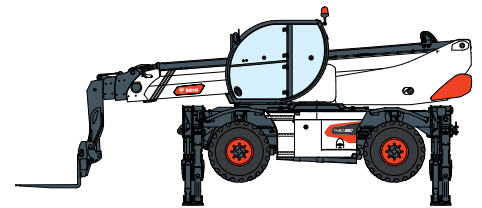
COMPACT WHEEL LOADERS



FORKLIFTS



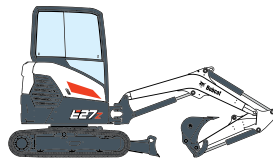
TELEHANDLERS



ROTARY TELEHANDLERS



LIGHT COMPACTION EQUIPMENT



COMPACT EXCAVATORS



COMPACT TRACTORS



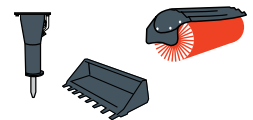
SMALL ARTICULATED LOADERS



MINI TRACK LOADER



MOWERS



ATTACHMENTS

**DOOSAN**

Bobcat is a Doosan Company. Doosan is a global leader in construction equipment, power & water solutions, engines, and engineering proudly serving customers and communities for more than a century. | Bobcat and the Bobcat logo are registered trademarks of Bobcat Company in the United States and various other countries. ©2023 Bobcat Company. All Rights Reserved.

Doosan Bobcat Korea Co., Ltd.

[www.bobcat.com](http://www.bobcat.com)

©2023 BOBCAT



**Bobcat**®