



Bobcat[®]

One Tough Animal.

LPG FORKLIFTS

7-Series, Pneumatic, 3.5 to 5.5 ton capacity G35S-7 / G40S-7 / G45S-7 / G50C-7 / G55C-7 / G40SC-7 / G45SC-7 / G50SC-7 / G55SC-7



ONE TOUGH ANIMAL

OUR MISSION

We empower operators to accomplish more, while working in the toughest conditions and tightest situations. When our customers have the will, we provide the way.

BOBCAT'S HISTORY

In 1958, Melroe Manufacturing Company introduced a compact front-end loader that evolved quickly into the M400, the world's first true skid steer loader. The company soon adopted what became the world-famous 'Bobcat' brand – and its success paved the way for the global compact equipment industry we know today.



YEARS OF EXPERIENCE

In 2021, Bobcat furthered its reach by acquiring Doosan Industrial Vehicle, increasing its capacity to provide customers with comprehensive business solutions. With Doosan's expertise in material handling and warehouse equipment dating back to its inaugural forklift in 1968, the company has established a global presence, with 400 dealers across 93 countries.



BOBCAT TODAY

Now, with a diversified portfolio that includes forklifts and warehouse equipment, Bobcat serves as a one-stop solution for intralogistics needs, from loading shipping containers to optimizing warehouse operations. Produced in its South Korean factory, Bobcat's material handling machines offer the precision and durability customers expect.



TOUGH, AGILE & SAFE

► READY TO GIVE YOUR BUSINESS A LIFT

Boost your business with an LPG forklift that has it all: high performance, a powerful and efficient engine, smooth and variable controls, and a comprehensive set of safety features. This rugged, dependable machine is also easy to service, ensuring a low total cost of ownership.

Spacious full cab equipped with extra features for maximum comfort



Excellent visibility through the mast, ensuring safer and more efficient work
P8

Durable frame and mast guarantee safer operation when carrying loads

Hood opens 60 degrees for quick and easy servicing
P12

Oil-cooled disc brakes for maximum productivity
P7

Good visibility through the roof to enhance the operator's view while lifting
P8



Multi-torque modes for a customized work environment (Eco, Standard)
P7

The Operator Sensing System (OSS) to prevent any unwanted movements of the truck when the operator leaves the seat for maximum safety
P10

Anti-slip step plate for increased safety when getting in & out of the machine

Fuse and relay box located in front of the engine for easier maintenance

Effortless and responsive driving with the hydrostatic system



► MAXIMIZE PRODUCTIVITY

Achieve even more efficiency each day with a high-performance engine delivering 69 kW of power and 290 Nm of torque, elevating productivity across all tasks.
P 6-7



► COMFORTABLE ALL SHIFT LONG

Enjoy the comfort of a spacious cab with plenty of legroom, deluxe suspended seat, integrated instrument panel, tiltable steering column, and many more features.
P 8-9



► SAFETY FIRST

Protect your investment, workforce, and handled goods with excellent all-around visibility, reliable oil-cooled brakes, and a host of other safety features that come as standard.
P 10-11



► MAXIMUM UPTIME

Minimize the total cost of ownership with longer service intervals and high-quality, genuine Bobcat parts and consumables. They offer excellent value and help keep your machine running smoother for longer.
P 12-13



OUTSTANDING PRODUCTIVITY



▶ HYDRAULIC CONTROL

Experience the convenience of hydraulic control for lifting and tilting, providing efficient and precise handling for all your material transport needs.



▶ CUSTOMIZE YOUR WORKPLACE

Choose from different torque modes that suit your working environment. The Eco mode limits engine consumption by enhancing fuel performance, while the Standard mode is suitable for all tasks.



▶ CHANGE DIRECTIONS EFFORTLESSLY

The thoroughly tested powershift transmission precisely manages clutch oil pressure, guaranteeing seamless transitions between forward and reverse. This control prevents transmission damage, ensuring a stronger and longer-lasting forklift.



▶ OIL-COOLED DISC BRAKES

Enjoy oil-cooled disc brakes for better braking and faster cycles, giving you the confidence to navigate and stop quickly. This enhancement significantly speeds up task completion and boosts overall productivity.

COMFORT & CONTROLS



▶ IMPROVED VISIBILITY

Benefit from improved operator visibility in all working positions, thanks to a wider mast window, repositioned hydraulic hoses, and a flat bar-style overhead guard.



▶ DELUXE SUSPENSION SEAT

The deluxe suspension seat is designed to maximize operator comfort. It features a larger recline, adjustable seat length, and weight resistance on the front side, ensuring the most comfortable seating experience.



▶ FULL OR MODULAR CABS

Equip your forklift with one of our full or modular cabs to conquer all weather conditions. Add options such as a heater, operator fan, and power jack for all-day comfort.



▶ REAR CAMERA DISPLAY

Opt for a rear view camera to enhance visibility. It activates automatically, feeding in to the in-cab display when in reverse, allowing you to enjoy the best view of your workplace without compromising comfort.

▶ RADIO AND MP3 PLAYER



Enjoy even the longest shifts with an optional radio and mp3 player.

▶ EASY ACCESS



This forklift features a low step height, facilitating easy and safe operator entry and exit, complemented by an entry grab bar and an anti-slip step plate.

▶ ERGONOMIC CONTROLS



Thanks to the ergonomic design and precise control placement, operating this machine is straightforward and efficient.



SAFETY IN EVERY MOVE

▶ ADVANCED PROTECTION FOR YOU AND YOUR OPERATION

Bobcat forklifts have safety embedded in their DNA. Packed with tons of features that protect your health and your investment, these machines give you peace of mind in every task, every day.

▶ OPERATOR SENSING SYSTEM

The intelligent Operator Sensing System (OSS) prevents unintended forklift movement by automatically stopping the truck's travel and mast lifting functions whenever the operator leaves the seat.



▶ MAST LOWERING INTERLOCK & TILT LOCK

The Mast Lowering Interlock & Tilt Lock system prevents unintentional lowering and tilting of the mast.



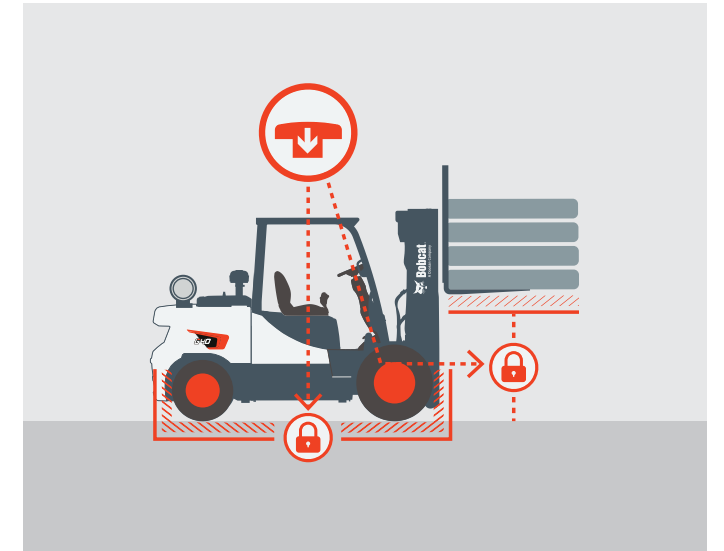
▶ BACKUP ALARM

The backup alarm emits a warning signal when the operator is driving in reverse, alerting those in the nearby vicinity.



▶ EMERGENCY SWITCH

Activating the emergency switch quickly stops the forklift by cutting off the engine's power supply.



▶ WEIGHT SCALE

With the help of an integrated weight scale, operators can prevent truck overload, keeping the workplace safer and more secure.



▶ GROUND SPEED CONTROL

Setting up a speed limit prevents the truck from going too fast. This limit can be customized for both forward and reverse directions.



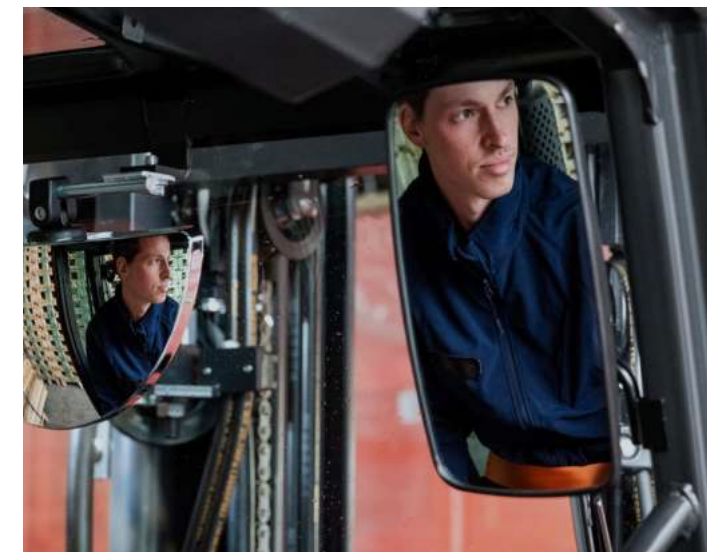
▶ BRIGHTER AND SAFER

Experience a brighter, safer, and more efficient workday with our front lights, combination lamps, and an additional rear light.



▶ LARGE PANORAMIC MIRROR

The large panoramic mirror offers excellent visibility of the rear working area, enhancing safety and contributing to your overall productivity.



BUILT TO LAST

► A HERITAGE OF RELIABILITY

The sturdy mast and frame, fully floating drive axle, and oil-cooled disc brake ensure years of productivity, all day, every day.



Easy access to main components with a tool-less removable floor plate and a hood that opens 60 degrees

Robust frame and overhead guard designed to withstand the demands of industrial environments and regular heavy use



Engine with low vibration for a longer lifespan of components

Covered electronic control units (ECU) protect the casing of sensitive electronic components for even more longevity

No mechanical connections between the steering wheel and steer axle for longer maintenance intervals

Easy access to grease fittings for proper lubrication

Durable cast iron cover for precise axle alignment and extended life, along with a high-tensile alloy steel shaft for enhanced torque transmission

THERE'S NO TIME FOR DOWNTIME. STAND UP TO EVERY TASK THAT COMES YOUR WAY, DAY AFTER DAY.



► EXTENSIVE DEALER NETWORK

You will receive the best after-sales service from your authorized local or national factory-trained dealer, backed by Bobcat's own customer service center. And Bobcat provides 100% parts inventory to insure any downtime is minimized. When you own a Bobcat forklift, our high quality, responsive customer support team comes with it.

► BOBCAT GENUINE PARTS

Quality components delivered to our dealers guarantee that all of our equipment is built to last, withstand the toughest conditions and provide reliable performance.

MAIN SPECIFICATIONS

TECHNICAL DATA ACCORDING TO VDI 2198										
		G35S-5	G40S-5	G45S-5	G50C-5	G55C-5	G40SC-5	G45SC-5	G50SC-5	G55SC-5
Load capacity	kg	3 500	4 000	4 500	5 000	5 500	4 000	4 500	5 000	5 500
Load center	mm	600	600	600	600	600	500	500	500	500
Wheelbase	mm	2 000	2 000	2 100	2 100	2 100	2 000	2 000	2 100	2 100
Height, mast lowered	mm	2 255	2 230	2 230	2 380	2 380	2 225	2 230	2 230	2 380
Free lift	mm	160	160	160	170	170	160	160	160	170
Lift	mm	3 000	3 000	3 000	3 050	3 050	3 000	3 000	3 000	3 050
Height, mast extended	mm	4 265	4 270	4 420	4 470	4 470	4 265	4 270	4 420	4 470
Height, overhead guard	mm	2 225	2 230	2 230	2 380	2 380	2 225	2 230	2 230	2 380
Height of seat	mm	1 248	1 255	1 255	1 255	1 255	1 248	1 255	1 255	1 255
Length to forkface	mm	3 115	3 165	3 280	3 325	3 350	3 115	3 165	3 280	3 325
Overall width	mm	1 370	1 455	1 455	1 455	1 455	1 370	1 455	1 455	1 455
Turning radius	mm	2 782	2 832	2 877	2 925	2 975	2 782	2 832	2 877	2 925

Specification values quoted in this specification sheet have been rounded. Performance may vary depending on operating conditions. Products and specifications are subject to improvement and change without prior notice.



STANDARD EQUIPMENT & OPTIONS

STANDARD EQUIPMENT & OPTIONS	
PRODUCTIVITY	
Power steering	✓
High powered, fuel efficient engine	✓
Multi-torque mode	✓
Inching pedal	✓
Auto tilt levering	•
Mono pedal with autoshift controller	•
Autoshift controller	•
Quick disconnect hose couplings	•
SAFETY	
Direction lever function	✓
Mast lowering and tilting interlock	✓
Engine shutdown	✓
Parking brake	✓
Overhead guard	✓
Two front LED lights	✓
Operating Sensing System (OSS)	✓
Neutral position for start	✓
Front lights with combination lamps	•
Rear safety light	•
Emergency lamp and switch	•
Back up alarm	•
Panoramic mirror	•
Rear grab bar (with horn)	•
Seat belt interlock	•
Back-up buzzer	•
Swing out and down LPG cradle	•
Ground speed control	•
Weight indicator	•
Rear view camera	•
Lift eyes	•

STANDARD EQUIPMENT & OPTIONS	
ERGONOMICS	
Excellent visibility	✓
Easy entry grip bar	✓
Anti-slip step plate	✓
Adjustable steering column	✓
Integrated instrument panel	✓
Easy to read display	✓
Steering wheel knob	•
Large rear view mirror	•
Radio and MP3	•
Suspension seat	•
Mono pedal	•
Cigar and power jack (12V)	•
Cup holder	•
Full cabin (sun visor, heater or air conditioner, sound suppression, tilting roof & window)	•
RELIABILITY	
Oil-cooled disc brakes (ODB)	✓
Electronic control units (ECU) cover	✓
Waterproof connectors	✓
Precleaner	•
Heavy duty cooling system	•
Belly plate	•
Defroster fan	•
SERVICEABILITY	
Dual element air cleaner and rain cap	✓
Integrated electric components (relays and fuses)	✓
Tool-less removeable floor plate	✓
Easy-to-access components	✓
Wide hood opening	✓
EasyView (software to adjust parameters)	✓
Service notifications	✓

Note: This list is based on factory data. Standard or optional can vary for specific countries.

• = option ✓ = standard – = not available

YOUR TRUSETED BUSINESS PARTNER

Your machine builds your business and reputation. Everything we put into Bobcat equipment is designed to make this possible. Strength, versatility, or agility, it's built around you.



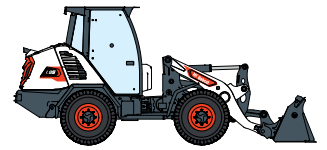
340 MACHINES / 150 ATTACHMENT FAMILIES / 1 TOUGH ANIMAL



SKID-STEER LOADERS



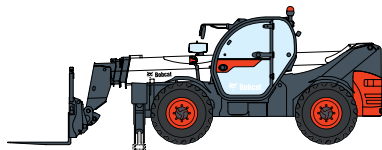
COMPACT TRACK LOADERS



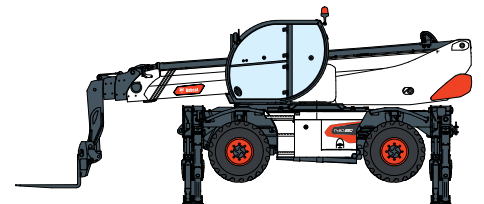
COMPACT WHEEL LOADERS



FORKLIFTS



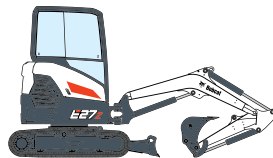
TELEHANDLERS



ROTARY TELEHANDLERS



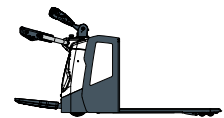
LIGHT COMPACTION EQUIPMENT



COMPACT EXCAVATORS



COMPACT TRACTORS



WAREHOUSE EQUIPMENT



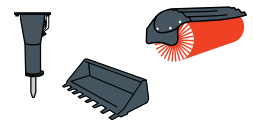
MINI TRACK LOADER



MOWERS



PORTABLE POWER



ATTACHMENTS

DOOSAN

Bobcat is a Doosan Company. Doosan is a global leader in construction equipment, power & water solutions, engines, and engineering proudly serving customers and communities for more than a century. | Bobcat and the Bobcat logo are registered trademarks of Bobcat Company in the United States and various other countries. ©Bobcat Company. All Rights Reserved.

Doosan Bobcat Korea Co., Ltd



Bobcat®