



**Bobcat**<sup>®</sup>

*One Tough Animal.*

# ELECTRIC FORKLIFTS

7-Series, 4 to 5 ton capacity    **B40X-7 / B45X-7 / B50XC-7 / B50X-7**



# ONE TOUGH ANIMAL

**▶ OUR MISSION**

We empower operators to accomplish more while working in the toughest conditions and tightest situations. When our customers have the will, we provide the way.

**▶ BOBCAT'S HISTORY**

In 1958, Melroe Manufacturing Company introduced a compact front-end loader that evolved quickly into the M400, the world's first true skid steer loader. The company soon adopted what became the world-famous 'Bobcat' brand – and its success paved the way for the global compact equipment industry we know today.



**▶ YEARS OF EXPERIENCE**

In 2021, Bobcat expanded its portfolio by acquiring Doosan Industrial Vehicle. This specialist in material handling equipment constructed its first forklift in 1968 and went on to establish a global presence with 400 dealers in 93 countries.



**▶ BOBCAT TODAY**

Bobcat is expanding its portfolio with the addition of forklifts and reach trucks for the material handling industry, offering a comprehensive lineup that will meet all your intralogistics needs. Bobcat forklifts and reach trucks are produced in our factory in South Korea, while our premium quality warehouse equipment is made in Germany.



# TOUGH, AGILE & SAFE

## ► READY TO GIVE YOUR BUSINESS A LIFT

Offering a dual traction motor, Curtis controller, and responsive acceleration, our forklifts are designed to optimize performance. And their dust and water resistance, oil-cooled disc brakes, and range of convenience options provide all-day comfort and dependability.

Tool-less removable side panel and wide open hood cover with locking type gas spring offers easy access to the main components

Excellent visibility through the mast for safer and more efficient worksites  
**P7**

Durable frame and mast for safer operation when carrying loads

Standard fitted weight indicator to prevent forklift overloading

Customizable operator compartment with your preferred controls (fingertip or levers)



Good roof visibility for enhanced operator vision while lifting

Premium adjustable seat and steering column for maximum comfort during long shifts  
**P11**

Improved dust and water resistance prevents downtime and increases productivity

Side battery removal for multi-shift operations  
**P11**

Oil-cooled disc brakes for maximum productivity and uptime  
**P7**

Reduced steering radius for improved maneuverability  
**P7**



### ► OUTSTANDING PRODUCTIVITY

Experience outstanding driving performance with a compact turning radius, excellent visibility, and a powerful motor system, enhancing overall productivity.  
**P 6-7**



### ► ALL-DAY COMFORT

Enjoy the ergonomically designed adjustable steering and seats with optional fingertip control.  
**P 8-9**



### ► SAFETY IN EVERY MOVE

This series comes equipped with Anti-Rollback, Turtle Mode, and curve speed control. These features prevent potential hazards, providing a secure and safe work environment.  
**P 10-11**



### ► MAXIMUM UPTIME

The robust components ensure durability and reliability. All primary components are easily accessible, making maintenance simple and efficient.  
**P 12-13**



# OUTSTANDING PRODUCTIVITY



### ▶ EXCELLENT VISIBILITY

Thanks to the precisely designed overhead guard with angled roof bars and the excellent visibility through the mast, you have the best view on the task at hand and accomplish more every day.



### ▶ POWERFUL TRACTION AND PUMP MOTOR SYSTEM

Improve your performance and productivity with the help of a powerful pump motor system, which provides high traction and torque.



### ▶ EASY SIDE BATTERY REMOVAL

The battery changing system enables fast and easy battery exchange using Side Roll-In/Out or Side Lift In/Out methods. This allows for multi-shift operations to be conducted efficiently.



### ▶ SMOOTH ACCELERATION & POWERFUL BRAKING

Acceleration starts slowly for safe and precise control. As you drive faster, acceleration increases for better productivity. The ergonomically positioned pedal effortlessly controls the reliable and strong braking power of the oil-cooled disc brakes.

# COMFORT & CONTROLS



### ▶ PREMIUM ADJUSTABLE SEAT

Thanks to the adjustable suspension seat, our forklifts provide exceptional comfort even during long shifts. For additional convenience, you can equip your seat with a heating system to keep operators warm in colder environments.



### ▶ ADJUSTABLE COLUMN

The ergonomic steering wheel column features step-less adjustment to let operators position it exactly where they need to.



### ▶ INTUITIVE INSTRUMENT PANEL

Control the truck's performance settings on the go with the simple touch of a button.



### ▶ CONVENIENCE TRAY

For maximum convenience, a large cup holder, USB port, 12 V power outlet, clipboard holder, and more are placed comfortably within your reach.

### ▶ EASY ACCESS



The anti-slip step provides a comfortable and safe way to hop on and off for peace of mind.

### ▶ WELL-PLACED HANDLES



Thanks to the well-placed entry bar and handles, stepping in and out of your vehicle is as quick and comfortable as it gets.

### ▶ EMERGENCY SWITCH



The emergency switch is always within your reach, ready to be pressed easily in case of emergency.



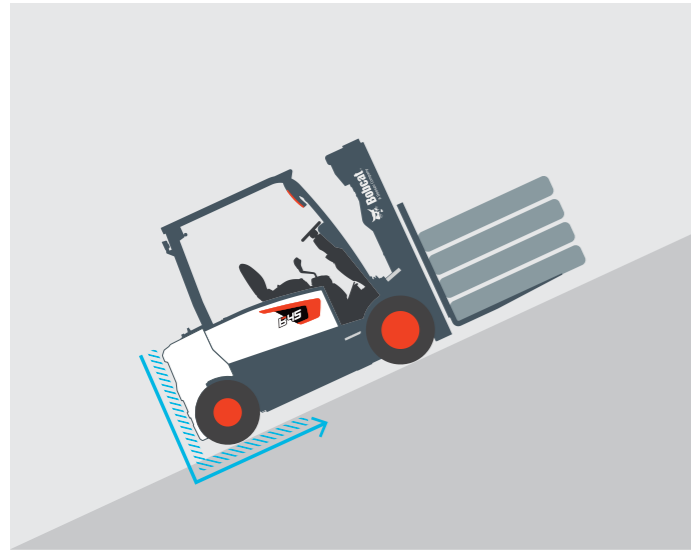
# SAFETY IN EVERY MOVE

## ▶ SAFETY COMES STANDARD

Bobcat forklifts have safety embedded in their DNA. Packed with tons of features that protect your health and your investment, these machines give you peace of mind in every task, every day.

## ▶ ANTI-ROLL BACK

The anti-roll back feature prevents the forklift from rolling back for 5 seconds when the truck is stopped.



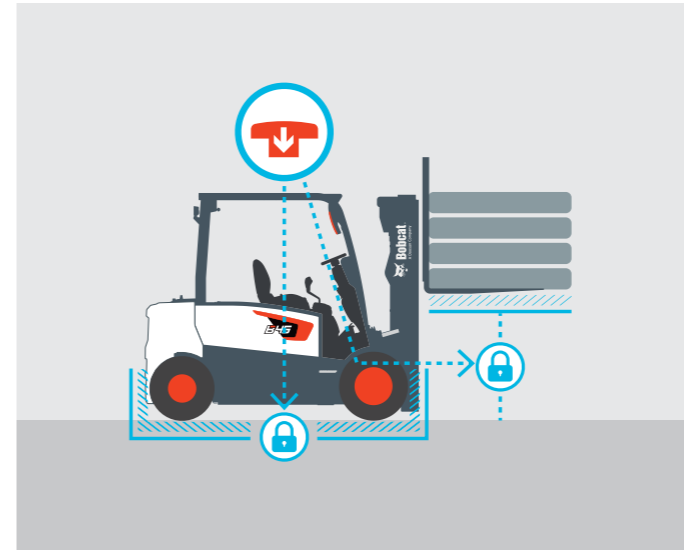
## ▶ TURTLE MODE

To make warehouse operations more secure, activate Turtle mode to decrease the truck's travel speed to a preset level while maintaining lift speed.



## ▶ EMERGENCY SWITCH

The emergency switch is always within your reach, ready to be pressed in case of emergency.



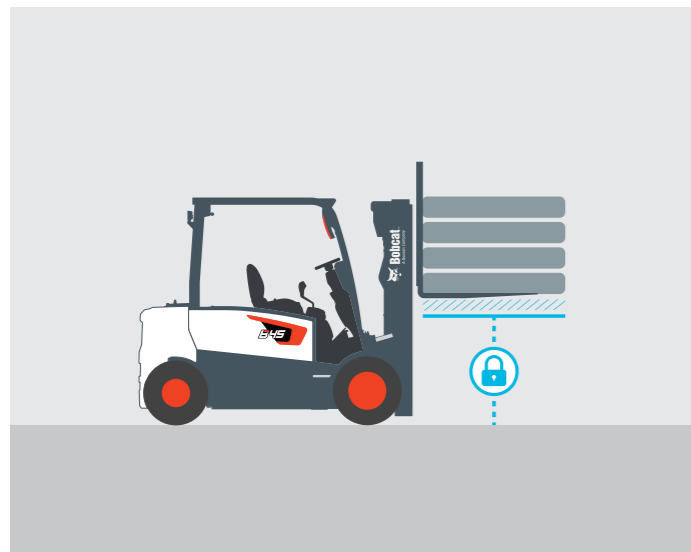
## ▶ GUARDIAN STABILITY SYSTEM

Our optional Guardian Stability System (GSS) adds an extra level of safety to your business. When the mast is lifted above its primary stage, the travel speed is reduced by 50%, and the forward tilt is limited to a maximum of 2 degrees.



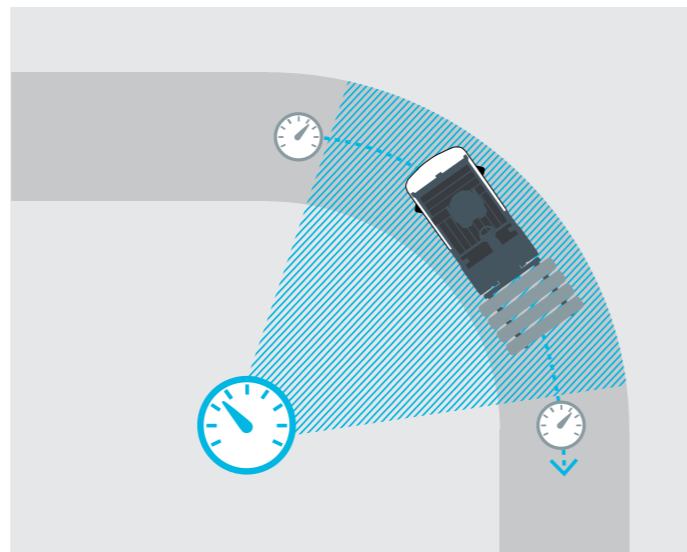
## ▶ MAST LOWERING INTERLOCK & TILT LOCK

When the operator leaves the truck unattended, the hydraulic locking system prevents unintentional lowering and tilting of the mast. This keeps the truck, load, and work array safe.



## ▶ AUTOMATIC SPEED CONTROL

The automatic speed control manages travel speeds when turning sharply and automatically slows the truck down when cornering to reduce the risk of accidents or damage.



## ▶ LARGE PANORAMIC MIRROR

Providing great visibility of the rear working area, the large panoramic mirror improves safety and adds to your overall productivity at the same time.



## ▶ LED LIGHTING SYSTEM

The LED lights illuminate even the darkest corners of your workplace, providing a safe and clear view of your surroundings.



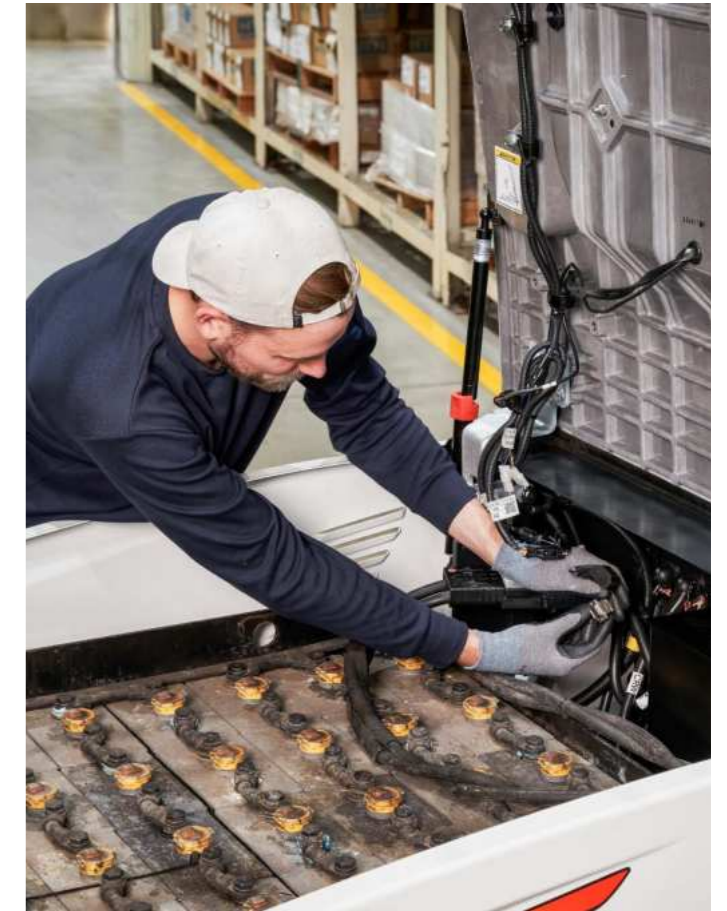
# BUILT TO LAST

## DESIGNED TO ENDURE

Bobcat 7-series electric forklifts are built tough to provide maximum uptime and dependability thanks to a reliable AC controller, dust & water-resistant parts, and an additional drive motor cover.



# THERE'S NO TIME FOR DOWNTIME. STAND UP TO EVERY TASK THAT COMES YOUR WAY, DAY AFTER DAY.



## EXTENSIVE DEALER NETWORK

You will receive the best after-sales service from your authorized local or national factory-trained dealer, backed by Bobcat's own customer service center. And Bobcat provides 100% parts inventory to insure any downtime is minimized. When you own a Bobcat forklift, our high quality, responsive customer support team comes with it.

## BOBCAT GENUINE PARTS

Quality components delivered to our dealers guarantee that all of our equipment is built to last, withstand the toughest conditions and provide reliable performance.

# SPECIFICATIONS

TECHNICAL DATA ACCORDING TO VDI 2198					
		B40X-7	B45X-7	B50XC-7	B50X-7
Load capacity/rated load (kg)	Q	4 000	4 500	4 990	5 000
Load centre distance (mm)	c	500			
Load distance, centre of drive axle to fork (mm)	x	572			
Wheelbase (mm)	y	2 000			
Service weight (with min. weight of battery) (kg)		7 012	7 427	7 734	7 763
Tread width, front (mm)	b11	1 168	1 160		
Tread width, rear (mm)	b12	1 111			
Tilt of mast/fork carriage forward ( $\alpha$ )/backward( $\beta$ ) (deg)	$\alpha / \beta$	6 / 9			
Height, mast lowered (mm)	h1	2 050 – 3 615		2 050 – 3 410	
Free lift (mm)	h2	160 – 1 540		160 – 1 685	160 – 1 535
Lift height (mm)	h23	3 000 – 6 050		3 000 – 6 500	
Height, mast extended (mm)	h4	4 240 – 7 330		4 240 – 7 780	4 415 – 7 930
Height to top of overhead guard (mm)	h6	2 345		2 350	
Seat height/stand height (mm)	h7	1 297		1 303	
Overall length (mm)	l1	4 007		4 037	
Length to face of forks (mm)	l2	2 957		2 987	
Overall width with single tires (mm)	b1	1 470			
Overall width with double tires (mm)		1 735			
Fork carriage ISO 2328. Class/type A, B (mm)		IIIA			IVA
Ground clearance, with load, below mast (mm)	m1	120		130	
Ground clearance, centre of wheelbase (mm)	m2	160			
Turning radius (mm)	Wa	2 620		2 645	
Internal turning radius (mm)	b13	877		879	
Travel speed, loaded / unloaded (km/h)		15 / 16			
Lift speed, loaded / unloaded (m/s)		0.35 / 0.47	0.33 / 0.47	0.31 / 0.47	
Lowering speed, loaded / unloaded (m/s)		0.48 / 0.45			
Maximum drawbar pull, loaded / unloaded, 5 minute rating (N)		18 620 / 18 620			
Maximum gradeability, loaded / unloaded, 5 minute rating (%)		17 / 27	16 / 26	15 / 25	
Battery voltage/nominal capacity K5 (V/Ah)		80 / 720			

Specification values quoted in this specification sheet have been rounded. Performance may vary depending on operating conditions. Products and specifications are subject to improvement and change without prior notice.

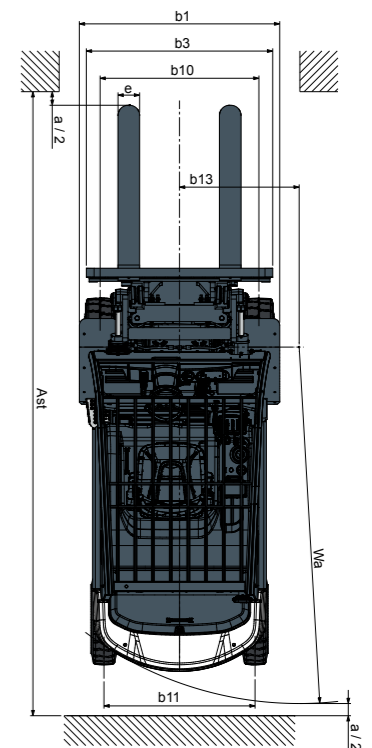
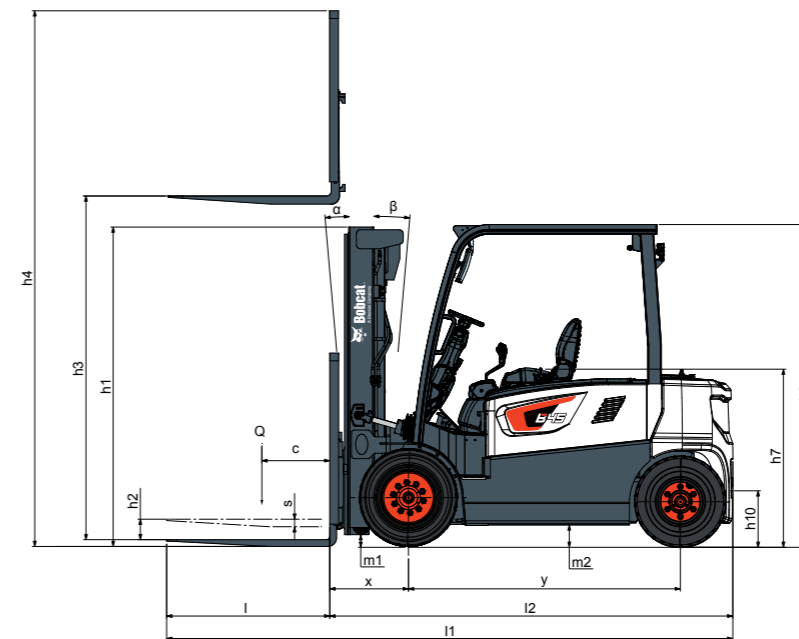
# STANDARD EQUIPMENT & OPTIONS

STANDARD EQUIPMENT & OPTIONS	
<b>SAFETY &amp; STABILITY</b>	
Oil-cooled disc brakes	✓
LED lights	✓
Emergency stop switch	✓
OSS (Operator Sensing System)	✓
Anti-roll back	✓
Curve speed control	✓
Low battery warning alarm	✓
Seat belt indicator	✓
Turtle mode	✓
Mast lowering interlock & tilt lock (ISO 3691)	✓
Guardian Stability System (GSS)	•
Blue rear safety light	•
Additional rear light	•
Strobe light	•
Hazard switch	•
Panoramic mirror and/or rear view mirrors	•
Backup alarm	•
Hydraulic accumulator	•
NFC start tag	•
<b>PRODUCTIVITY</b>	
Full AC system chassis	✓
Hydraulic cushioned valve in freelif cylinder (FFL & FFT)	✓
Excellent visibility through mast	✓
Rounded design counterweight	✓
Smooth and responsive acceleration	✓
Weight indicator hydraulic sensing type	✓
Autotilt leveling	•
Battery lift/roll in and out system	•
Quick couplings	•

STANDARD EQUIPMENT & OPTIONS	
<b>ERGONOMICS</b>	
Large entry step with anti-slip pattern	✓
Large & angled floor plate (leg room) with rubber mat	✓
Rounded design battery hood cover	✓
Easy to read instrument panel	✓
Adjustable tilt steering column & easy grip (Ø280 size) steering wheel	✓
Convenience tray with cup holder, USB port & 12V jack & clip board	✓
Hydraulic levers	✓
Fingertip	•
Steering wheel knob	•
Low overhead guard	•
Mono pedal	•
Directional switch on main control valve	•
Selection of suspension seats (Grammer)	•
<b>RELIABILITY</b>	
IP65 Rated Curtis controller	✓
Robust frame structure & strong structure overhead guard	✓
Oil-cooled disc brakes	✓
IP43 rated drive & pump motors	✓
IP54 rated drive & pump motors	•
Tilt cylinders bellows	•
<b>SERVICEABILITY</b>	
Easy to access controller	✓
Wide open battery hood cover	✓
Tool-less removable side cover	✓
EasyView: service program	✓

\*This list is based on factory data. Standard or optional can vary for specific countries.

• = option    ✓ = standard    – = not available





# YOUR TRUSTED BUSINESS PARTNER

Your machine builds your business and reputation. Everything we put into Bobcat equipment is designed to make this possible. Strength, versatility, or agility, it's built around you.

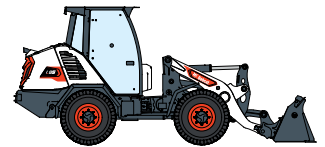
340 MACHINES / 150 ATTACHMENT FAMILIES / 1 TOUGH ANIMAL



SKID-STEER LOADERS



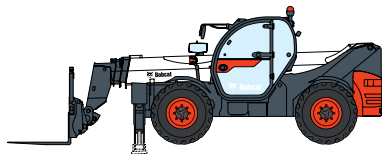
COMPACT TRACK LOADERS



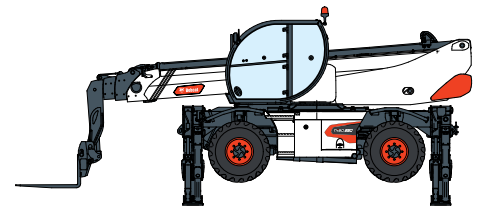
COMPACT WHEEL LOADERS



FORKLIFTS



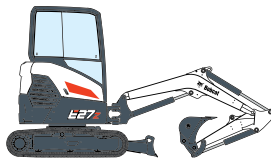
TELEHANDLERS



ROTARY TELEHANDLERS



LIGHT COMPACTION EQUIPMENT



COMPACT EXCAVATORS



COMPACT TRACTORS



SMALL ARTICULATED LOADERS



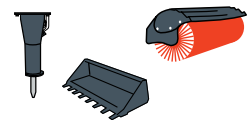
MINI TRACK LOADER



MOWERS



PORTABLE POWER



ATTACHMENTS

**DOOSAN**

Bobcat is a Doosan Company. Doosan is a global leader in construction equipment, power & water solutions, engines, and engineering proudly serving customers and communities for more than a century. | Bobcat and the Bobcat logo are registered trademarks of Bobcat Company in the United States and various other countries. ©2024 Bobcat Company. All Rights Reserved.

Doosan Bobcat Korea Co., Ltd.

[www.bobcat.com](http://www.bobcat.com)

©2024 BOBCAT



**Bobcat**®