

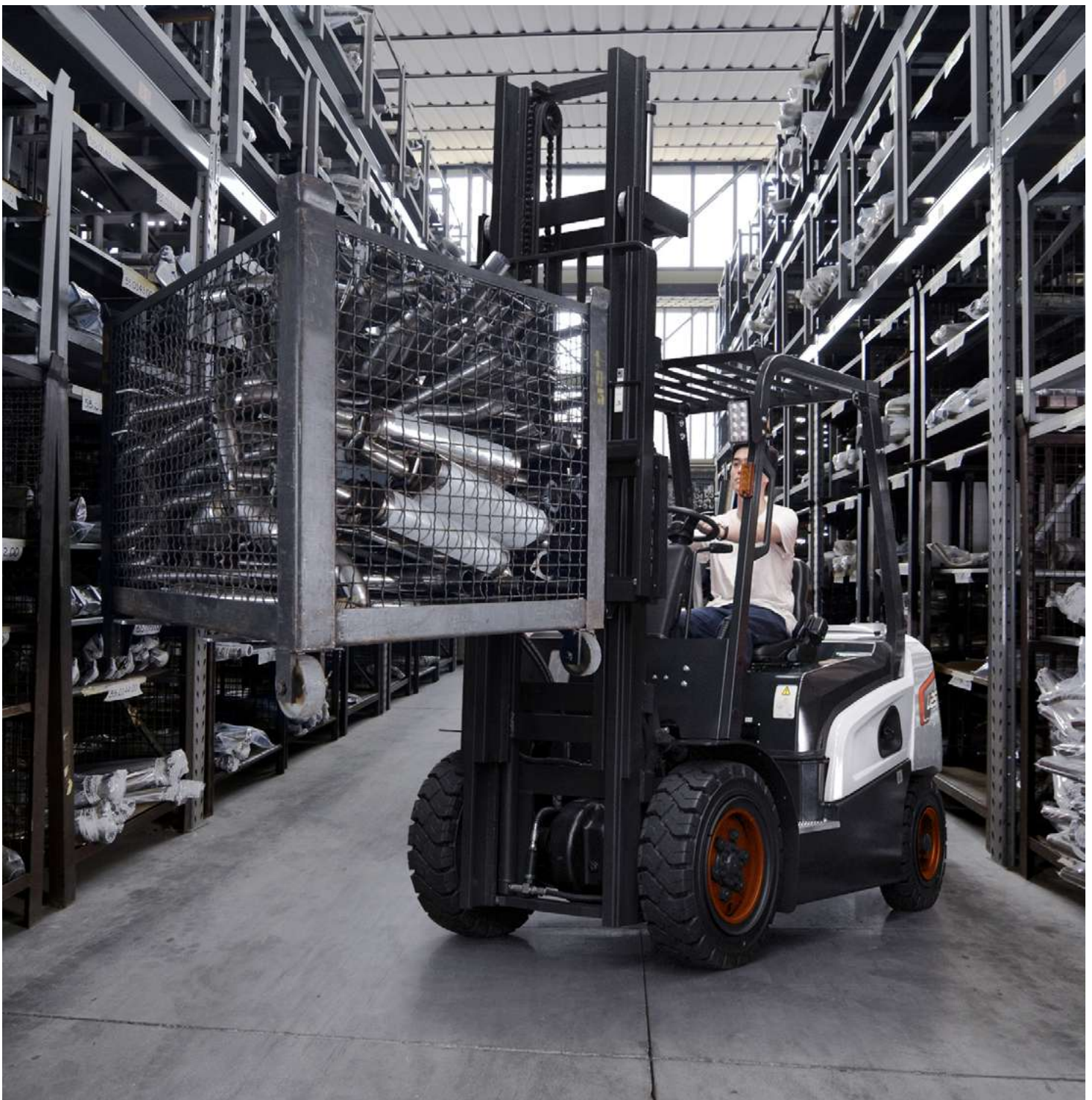


Bobcat[®]

One Tough Animal.

DIESEL FORKLIFTS

Diesel 2.0 to 3.5 ton Capacity, Euro Stage V D20NXP / D25NXP / D30NXP / D33NXP / D35NXP



ONE TOUGH ANIMAL

OUR MISSION

We empower operators to accomplish more, while working in the toughest conditions and tightest situations. When our customers have the will, we provide the way.

BOBCAT'S HISTORY

In 1958, Melroe Manufacturing Company introduced a compact front-end loader that evolved quickly into the M400, the world's first true skid steer loader. The company soon adopted what became the world-famous 'Bobcat' brand – and its success paved the way for the global compact equipment industry we know today.



YEARS OF EXPERIENCE

In 2021, Bobcat expanded its portfolio by acquiring Bobcat Industrial Vehicle. This specialist in material handling equipment constructed its first forklift in 1968 and went on to establish a global presence with 400 dealers in 93 countries.



BOBCAT TODAY

Bobcat is expanding its portfolio with the addition of forklifts and reach trucks for the material handling industry. Offering a comprehensive line-up that will meet all your intralogistics needs. Bobcat forklifts and reach trucks are produced in our factory in Korea and China, while our premium quality warehouse equipment is made in Germany.



EXPERIENCE THE FULLY ENHANCED VALUE OF NXP SERIES

► **EVERYTHING HAS BEEN CHANGED. NEW NXP, THE GAME CHANGER.**

The new NXP series offering outstanding power, durability and operator comfort realizes customer satisfaction through providing the best productivity and convenience in various industrial applications.



► **STYLISH DESIGN**
By applying the Bobcat new design, it represents the Bobcat's unique exterior.



► **POWERFUL PERFORMANCE**
The combination of powerful engine, transmission, and drive axle maximizes the performance and gives best productivity in various work applications.

P 6-7



► **ALL-DAY COMFORT**
The operator compartment is more spacious and ergonomically designed to reduce driver's fatigue. It enables more comfort and safe operation.

P 10-11

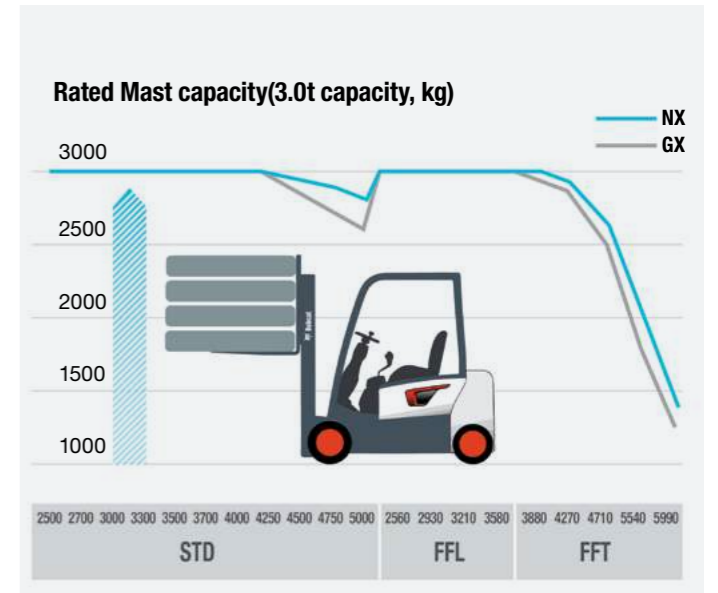
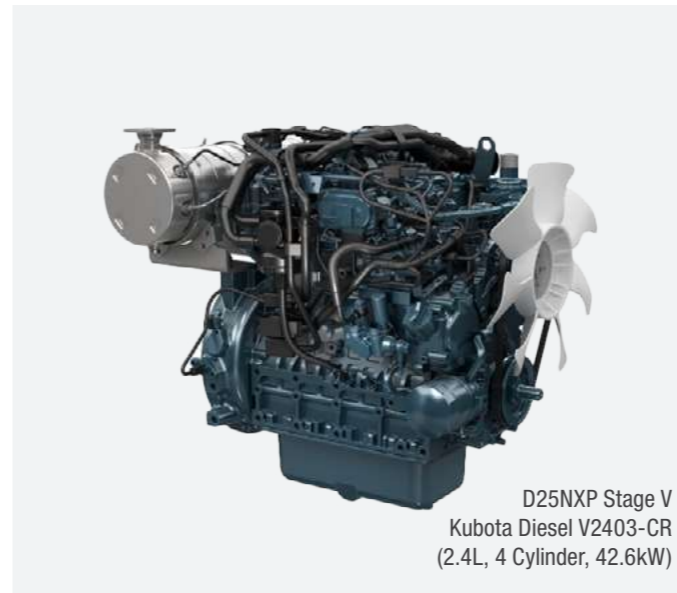


► **MAXIMUM UPTIME**
The robust components ensure durability and reliability. All primary components are easily accessible, making maintenance simple and efficient.

P 13



POWERFUL PERFORMANCE

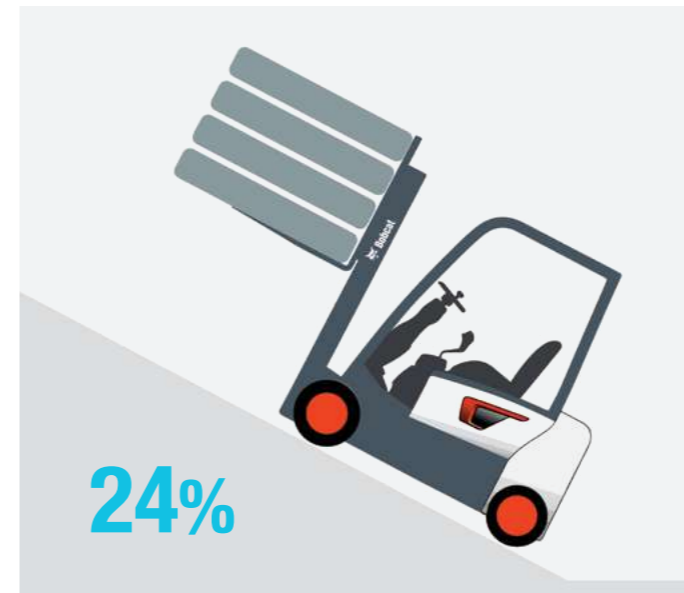


ENGINE

Kubota V2403-CR Diesel engine makes powerful performance and generating capacity by the technology of key temperature control.
It also increase the Ash cleaning and Engine Oil change interval, so give the value to customer TCO optimization.

HIGH RESIDUAL CAPACITY

NXP can lift about 10% more weight at the same height with the aux weight structure and powerful hydraulic system.
(* Single pneumatic tire truck)
It is suitable for work areas with high rack height.



POWERFUL GRADEABILITY

With the powerful engine, transaxle and aux weight structure, gradeability is maximized and makes it easy to go up the 24% steep slopes.
[Max Gradeability @1.6km/h, Laden]
D30NXP 3.0t capacity truck
- Stage V : 23%



HIGH SPEED OF LIFTING / LOWERING

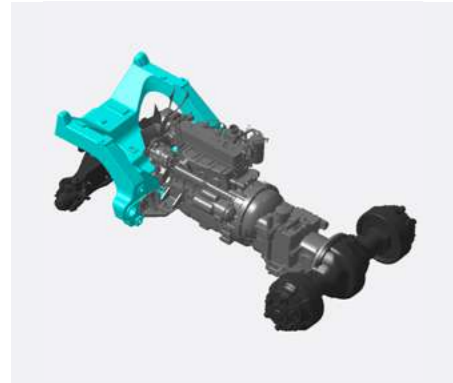
Gear pump and mast regulator valve are optimized to increase the lifting / lowering speed and it makes operation more productive.

DURABILITY GUARANTEED

▶ ADVANCED DESIGN FOR YOU AND YOUR OPERATION

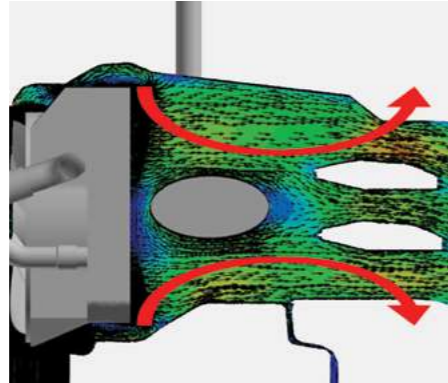
The NXP Series is equipped with advanced design to reduce noise, vibration, heat, dust - inflow, ensures durability of major components. With the improved design and additional option, NXP guarantees durability in harsh operating conditions.

▶ AUX WEIGHT



Many troubles are caused by vibration. In NX series, the engine is mounted on the Aux. weights to effectively absorb vibration and suppress noise. It extends parts durability and prevents durability decline and oil leakage.

▶ OPTIMIZED AIR FLOW



Air flow is optimized by improving muffler position, clearance between parts and enlarging the inner space of counter weight. It streamlines the air flow and increases the cooling performance.

▶ ROBUST MAST



Reinforcement rib (J channel) of mast beam improves mast stiffness and lateral stability. Six roller carriage gives superior strength and durability for wider and longer loads.

▶ ANTI DUST DESIGN



The bottom-sealed overhead guard absolutely eliminates the dust inflow from the bottom side.

▶ DUAL ELEMENTS AIR CLEANER



Air cleaner with dual element filter protects engine against dust effectively, ensuring the durability of engine. It is equipped as standard in NX Plus model.

▶ PRE CLEANER (OPTION)

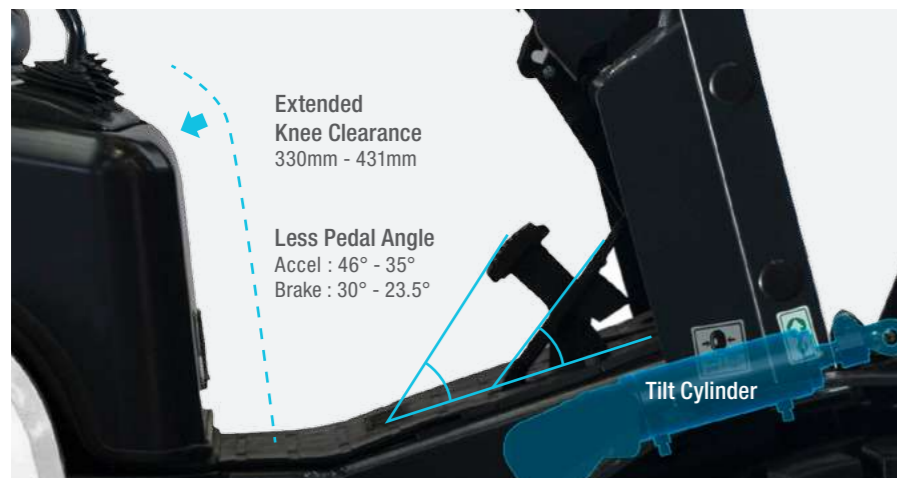


In a dusty environment, pre-cleaner removes dust in advance and extends lifecycle of air cleaner effectively.





Extended Pedal Clearance
63mm - 76mm



Extended Knee Clearance
330mm - 431mm

Less Pedal Angle
Accel : 46° - 35°
Brake : 30° - 23.5°

Tilt Cylinder

► **MORE SPACIOUS LEG ROOM**
The knee clearance is widened and tilt cylinder is removed on the floor plate, it allows more spacious leg room. Accel and brake pedal clearance and angle are improved to reduce ankle fatigue.

COMFORT

EXCELLENT OPERATOR COMFORT

► **IMPROVED FRONT / REAR VISIBILITY**



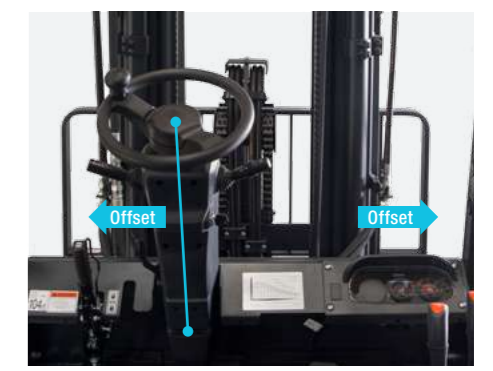
The improvement of FCU column height and counter weight design has increased front and rear visibility and enables safer driving.

► **WIDE MAST VISIBILITY**



Neatly arranged hoses and chains provide wide visibility.

► **STEERING COLUMN & INSTRUMENT PANEL OFFSET**



Steering column is shifted to the left for more comfortable posture. Instrument panel is also shifted to the right for easier viewing.

► **ADJUSTABLE TILT STEERING COLUMN**



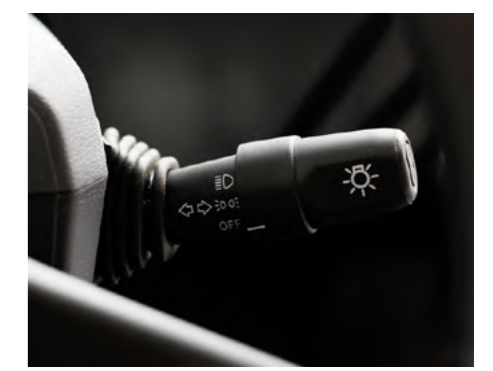
The steering column can be adjusted over a wide range of angles, allowing optimal posture for operator.

► **COMPACT STEERING WHEEL**



Compact steering wheel offers steering convenience and reduces operator fatigue.

► **INTEGRATED LAMP SWITCH**



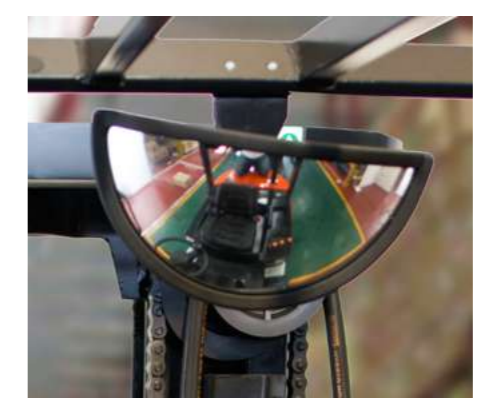
The turn signal and head lamp switches are integrated for convenient operation.

► **LED LAMP**



Long-lasting, high-brightness LED lights is equipped as standard feature.

► **PANORAMIC MIRROR**



The panoramic mirror offers wide rear view and greatly improves driving safety.

► **EXTENDED STEERING ANGLE**



Turning radius is improved by increasing the steering angle. It brings more maneuverability in small space.

BUILT TO LAST

▶ ENHANCED SAFETY

NXP helps safer operation. NXP is equipped with various safety features. It prevents unexpected accidents, ensuring safety of employees.

THERE'S NO TIME FOR DOWNTIME. STAND UP TO EVERY TASK THAT COMES YOUR WAY. DAY AFTER DAY.

Large Entry Grip Bar
The entry grip bar is larger, so it is easy to grip and allows safer ride on / off.

Rearranging of Tilt Cylinder
Tilt cylinder is removed on the floor plate, preventing operator from falling over.

Anti-Skid Step Plate
The wider step plate prevents slipping and it also helps safer ride on / off.



▶ OSS (OPERATOR SENSING SYSTEM)

OSS function avoids any unintended truck movements when the operator is not seated.

- ① Warning when operator leaves the seat without parking brake.
- ② Warning when operator drives without seatbelt fastened.
- ③ Automatically stop the vehicle when operator leaves the seat.



▶ ISO3691 HYD. LOCKING VALVE

If operator leaves or turns-off the truck, this system will automatically lock the hydraulic function, not allowing lifting, tilting, lowering.

▶ JUNCTION BOX (FOR DIESEL STAGE V)

Fuse and relay are concentrated for easy maintenance.



Wide Open Hood Angle
It is easy to access engine room by enlarging the hood open angle.

Hood Locking Cylinder
It helps easy maintenance and prevents safety accident.

Removable Side Cover
By applying knob bolt, it can be disassembled by hand.



TECHNICAL SPECIFICATIONS

D20/25/30/33/35NXP - COMPLIED WITH EURO STAGE V OR EPA TIER III									
CHARACTERISTICS	1.1	Manufacturer		Bobcat	Bobcat	Bobcat	Bobcat	Bobcat	
	1.2	Model designation		D20NXP	D25NXP	D30NXP	D33NXP	D35NXP	
		Transmission type		Autoshift	Autoshift	Autoshift	Autoshift	Autoshift	
		Fuel : Diesel LPG DF		Diesel	Diesel	Diesel	Diesel	Diesel	
	1.4	Operator type : Hand Pedestrian Standing Seated Order-picker		Seated	Seated	Seated	Seated	Seated	
	1.5	Load capacity	kg	2000	2500	3000	3300	3500	
	1.6	Load Center	mm	500	500	500	500	500	
	1.8	Load distance centre of drive axle to fork	x mm	472	472	472	477	477	
	1.9	Wheelbase	y mm	1700	1700	1700	1700	1700	
TYRES	2.1	Service weight	kg	3670	3950	4420	4620	4750	
	2.2	Axle Loading Laden Front/Rear	kg	4940/730	5580/870	6500/920	6950/970	7250/1000	
	2.3	Axle Loading Unladen Front/Rear	kg	1720/1950	1730/2220	1800/2620	1740/2880	1670/3080	
	3.1	Tyres: pneumatic (P) superelastic (SE) cushion (C)		P	P	P	P	P	
	3.2	Tyre size Front		28x9-15-14PR	28x9-15-14PR	28x9-15-14PR	28x9-15-14PR	28x9-15-14PR	
	3.3	Tyre size Rear		6.50-10-10PR	6.50-10-10PR	6.50-10-10PR	6.50-10-10PR	6.50-10-10PR	
	3.5	Wheels number Front/Rear (x = driven wheels)		x2/2	x2/2	x2/2	x2/2	x2/2	
	3.6	Tread Front	b11 mm	1060	1060	1060	1060	1060	
	3.7	Tread Rear	b12 mm	980	980	980	980	980	
DIMENSIONS	4.1	Tilt of Mast/Fork carriage Forward/Backward	α / β deg	6/10	6/10	6/10	6/10	6/10	
	4.2	Height Mast lowered	h1 mm	2045	2045	2045	2045	2045	
	4.3	Free lift	h2 mm	150	150	150	150	150	
	4.4	Lift (with STD 2-stage mast)	h3 mm	3000	3000	3000	3000	3000	
	4.5	Height Mast Extended	h4 mm	4247	4247	4247	4252	4252	
	4.7	Height of Overhead Guard(Cabin)	h6 mm	2160	2160	2160	2160	2160	
	4.8	Height of Seat	h7 mm	1185	1185	1185	1185	1185	
	4.19	Overall Length	l1 mm	3610	3660	3715	3780	3800	
	4.20	Length to Forkface	l2 mm	2560	2610	2665	2730	2750	
	4.21	Overall Width	b1/b2 mm	1290	1290	1290	1290	1290	
	4.22	Fork dimensions	s/e/l mm	45x100x1050	45x100x1050	45x122x1050	50x125x1050	50x125x1050	
	4.23	Fork carriage ISO 2328 class/type AB		II	II	III	III	III	
	4.24	Fork carriage width	b3 mm	1042	1042	1042	1042	1042	
	4.31	Ground Clearance laden below mast	m1 mm	132	132	132	132	132	
	4.32	Ground Clearance center of wheelbase	m2 mm	135	135	135	135	135	
	4.33	Aisle with for pallets 1000 x 1200 crossways	Ast mm	3952	4002	4087	4137	4157	
4.34	Aisle with for pallets 800 x 1200 lengthways	Ast mm	4152	4202	4287	4337	4357		
4.35	Turning radius	Wa mm	2280	2330	2415	2460	2480		
4.36	Internal Turning Radius	b13 mm	735	735	735	735	735		
PERFORMANCE DATA	5.1	Travel Speed Laden/Unladen	km/h	18.5/19.5	18.5/19.5	18.5/19.5	18.5/19.5	18.5/19.5	
	5.2	Lift Speed Laden/Unladen	mm/sec	520/550	520/550	520/550	420/450	420/450	
	5.3	Lowering Speed Laden/Unladen	mm/sec	420/550	420/550	420/550	470/500	470/500	
	5.5	Drawbar pull Laden/Unladen(@ 1.6km/h)	N	17700/17300	17500/17200	17300/17000	17200/16800	17100/16600	
	5.6	Max. Drawbar pull Laden/Unladen	N	20200/19600	20000/19500	19800/19300	19600/19200	19500/19000	
	5.7	Gradeability Laden/Unladen(@ 1.6km/h)	%	30/55	28/50	23/42	22/40	22/40	
	5.8	Max. Gradeability Laden/Unladen	%	38/62	30/58	28/50	25/46	24/44	
	5.10	Service Brake		Hydraulic	Hydraulic	Hydraulic	Hydraulic	Hydraulic	
	CONSTRUCTION ENGINE	7.1	Engine Manufacturer/type		Kubota V2403-CR-TE5B	Kubota V2403-CR-TE5B	Kubota V2403-CR-TE5B	Kubota V2403-CR-TE5B	Kubota V2403-CR-TE5B
		7.2	Engine power according to DIN ISO1585	kW	42.6	42.6	42.6	42.6	42.6
7.3		Rated speed	min-1	2400	2400	2400	2400	2400	
7.3.1		Torque at 1/min	N-m	195.6@1500	195.6@1500	195.6@1500	195.6@1500	195.6@1500	
7.4		Cycle/Number of Cylinders/Displacement	-/cm3	4/4/2434	4/4/2434	4/4/2434	4/4/2434	4/4/2434	
7.10		Battery Voltage/normal capacity	V/Ah	12/90	12/90	12/90	12/90	12/90	
ADDITION DATA	10.1	Operating pressure for attachments	bar	160	160	160	160	160	
	10.2	Oil volume for attachments	L/min	65	65	65	65	65	
	10.4	Fuel Tank Capacity	L	70	70	70	70	70	

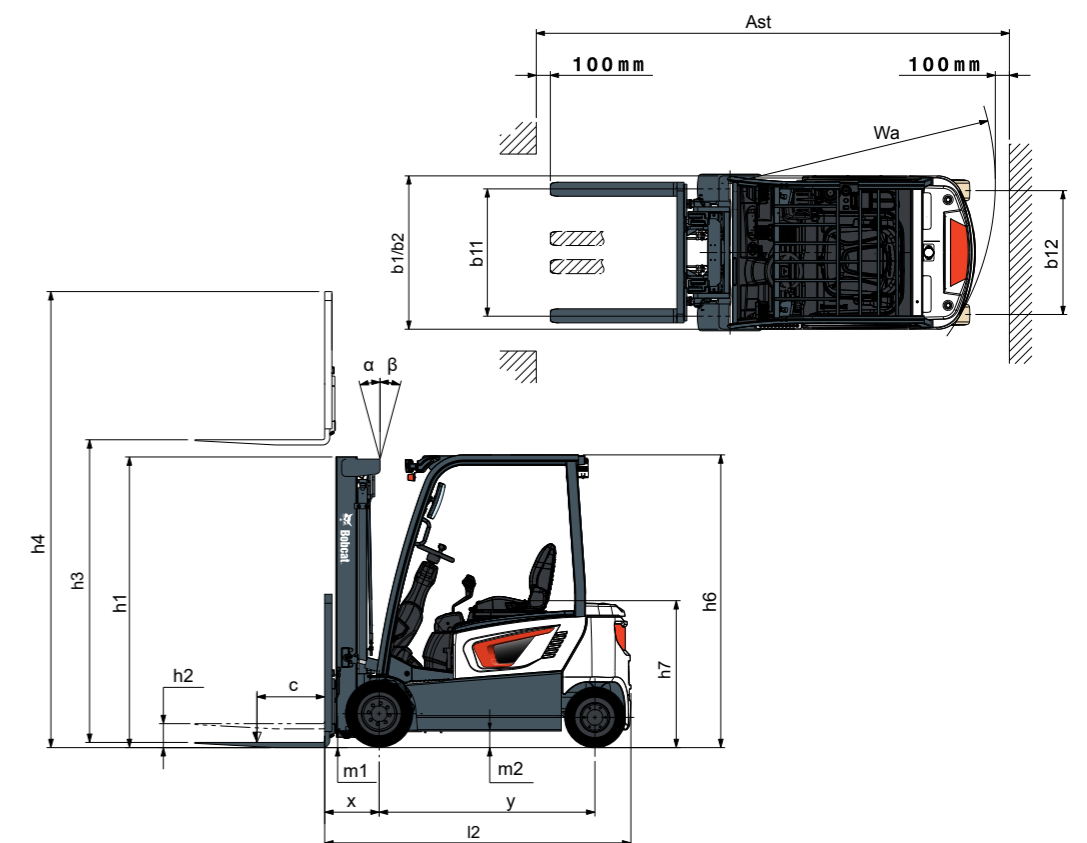
Note: Specification values quoted in this specification sheet has been rounded. Performance may vary due to operation conditions. Products and specifications are subject to improvement and change without prior notices.

STANDARD EQUIPMENT & OPTIONS

STANDARD FEATURES AND OPTIONAL EXTRAS	STANDARD FEATURES AND OPTIONAL EXTRAS		
PERFORMANCE	OPERATOR COMFORT		
Transmission Type: Auto shift	✓	Hydraulic Control Levers	✓
Aux. Weight	✓	Spacious Leg Room / Comfort Pedal Layout	✓
Power Shoe Brakes	✓	Clear Front/Rear/Mast Visibility	✓
DURABILITY		LED Combination Lamps	✓
Mast with JJ Beam	✓	Compact Steering Wheel	✓
Anti dust Overhead guard	✓	Large Entry Grip Bar	✓
Dual element Air cleaner	✓	Anti-skid Step Plate	✓
Pre cleaner	•	Panoramic Mirror	✓
Autoshift Controller	•	Integrated Lamp Switch	✓
SAFETY		Adjustable Steering column	✓
Operator Sensing System	✓	Steering Knob	✓
Back up Alarm - Inside	✓	Clip Board	✓
Control Valve with Hydraulic locking	✓	Modular Cabin - Type A,B,C	•
Rear Safety Light	•	Full Cabin (with Heater & Air Conditioner)	•
Rear Grab Bar with Horn	•	Cup Holder	•
Strap, Static Ground	•	USB Port	•
Strobe	•	Fuel Cap	•
Spark Arrester	-	Quick Disconnect Hose Couplings	•
		Fan	•
		SERVICEABILITY	
		Toolless Side panel	✓
		Toolless Floor Plate	✓
		Hood locking cylinder	✓
		Junction Box	✓

* Remark : This list is based on factory data. Standard or optional can vary for specific countries.

- = option
- ✓ = standard
- = not available



* Note: This dimensional drawing only applies to the 4 wheels series.

YOUR TRUSTED BUSINESS PARTNER

Your machine builds your business and reputation. Everything we put into Bobcat equipment is designed to make this possible. Strength, versatility, or agility, it's built around you.



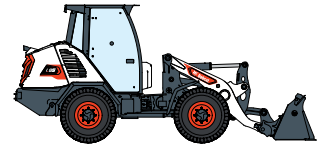
145 MACHINES / 46 PRODUCT FAMILIES / 1 TOUGH ANIMAL



SKID-STEER LOADERS



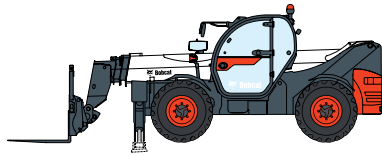
COMPACT TRACK LOADERS



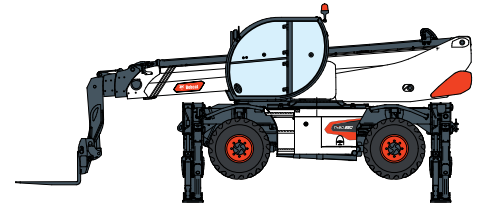
COMPACT WHEEL LOADERS



FORKLIFTS



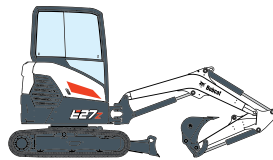
TELEHANDLERS



ROTARY TELEHANDLERS



LIGHT COMPACTION EQUIPMENT



COMPACT EXCAVATORS



COMPACT TRACTORS



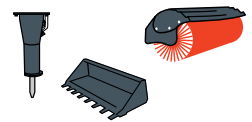
SMALL ARTICULATED LOADERS



MINI TRACK LOADER



MOWERS



ATTACHMENTS

DOOSAN

Bobcat is a Doosan Company. Doosan is a global leader in construction equipment, power & water solutions, engines, and engineering proudly serving customers and communities for more than a century. | Bobcat and the Bobcat logo are registered trademarks of Bobcat Company in the United States and various other countries. ©2023 Bobcat Company. All Rights Reserved.

Doosan Bobcat Korea Co., Ltd.

www.bobcat.com

©2023 BOBCAT



Bobcat®