



Fisher Engineering

50 Gordon Drive, Rockland, Maine 04841-2139 • www.fisherplows.com

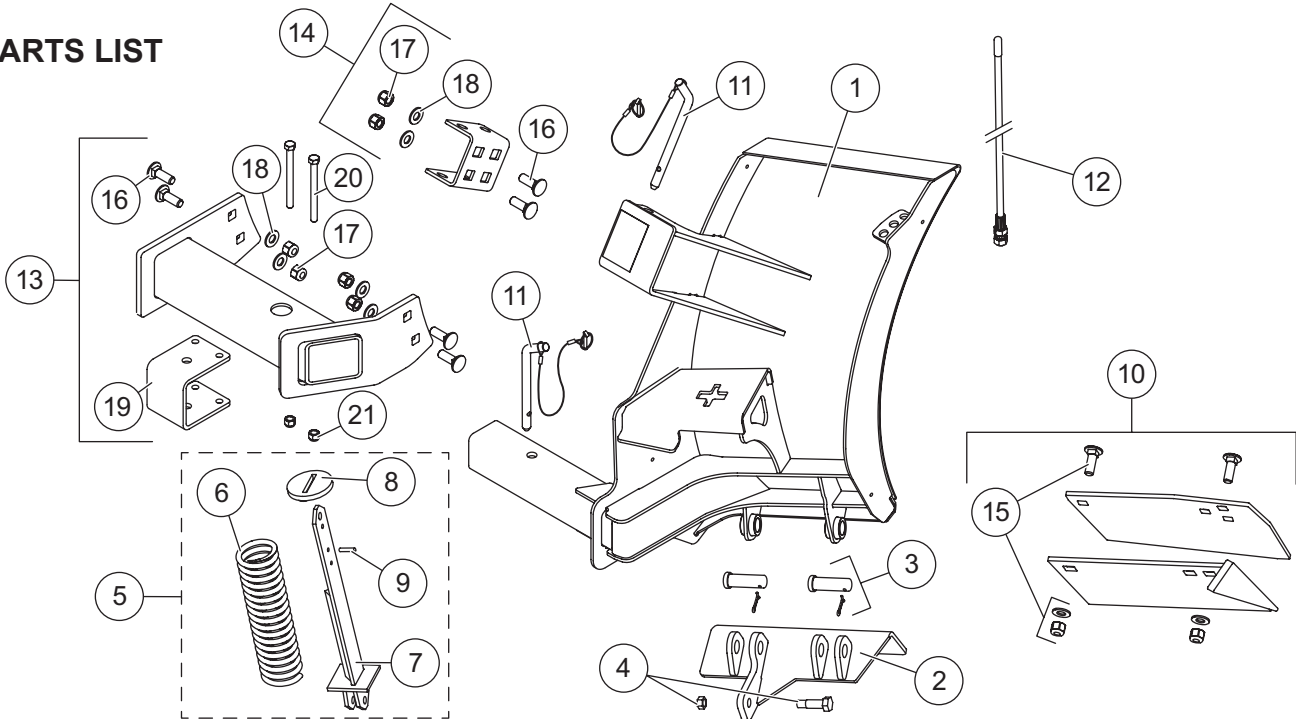
41790

January 1, 2016
Lit. No. 41759, Rev. 02

Blade Wing Extension Kit

HD2™ & HDX™ Snowplows

PARTS LIST



41790 Blade Wing Extension Kit

Item	Part	Qty	Description	Item	Part	Qty	Description
1*	52175	1	Blade Wing Extension – PS	9	20181	2	1/4 x 1-1/4 Pin
ns*	52176	1	Blade Wing Extension – DS	10	52045	1	Cutting Edge Kit – PS
2	52179	1	Base Angle – PS	ns	52046	1	Cutting Edge Kit – DS
ns	52181	1	Base Angle – DS	ns	52050	1	Cutting Edge Kit – PS and DS
3	5523K	4	3/4 x 2-3/16 Machine Pin w/Cotter	11	63565	4	1/2 x 5-1/2 Stand Pin Assembly
4	40905	2	Shoulder Bolt w/ Locknut	12	27195	1	26" Flexible Blade Guides (set of 2)
5	21452	2	Removable Spring Assembly HD	13	52047	1	Lower Wing Mounting Bracket Kit – PS
6	5323	2	Trip Spring	ns	52048	1	Lower Wing Mounting Bracket Kit – DS
7	21450	2	Removable Spring Bar	14	52049	2	Blade Upper Mounting Bracket Kit
8	20191	2	Removable Spring Disc	15	52515	2	Cutting Edge Bolt Kit HD2/HDX Wing
ns 52044 Bolt Bag – Mounting Brackets							
16		12	1/2-13 x 1-1/2 Carriage Bolt G8	18		12	1/2 Hardened Flat Washer
17		12	1/2-13 Hex Locknut GB				
Item 19 52131 Lower Mounting Bracket Sleeve Kit							
20		2	3/8-16 x 4-1/4 Hex Cap Screw G5	21		2	3/8-16 Hex Locknut GB
ns = not shown				G = Grade			

* Also includes Items 2–9.

A DIVISION OF FISHER, LLC

INSTALLATION INSTRUCTIONS

⚠ WARNING

Do not exceed GVWR or GAWR, including blade and ballast. The rating label is found on the driver-side vehicle door cornerpost.

⚠ CAUTION

Read this document before installing the blade wing extension kit.

⚠ CAUTION

Use standard methods and practices when attaching snowplow and installing accessories, including proper personal protective safety equipment.

⚠ CAUTION

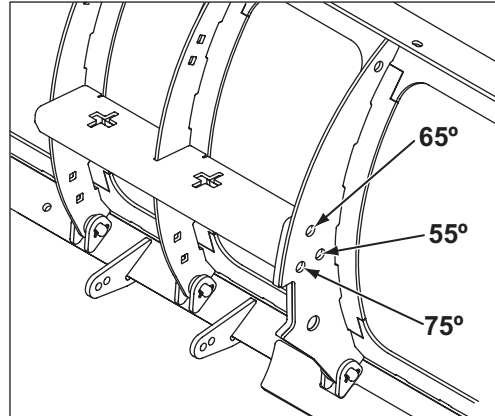
See your FISHER® outlet/website for specific vehicle application recommendations before installation. Blade wing weight information may be found in the eMatch tool.

For best results, wing extensions should be installed only on a blade equipped with a new cutting edge. Adding wing extensions to a blade with a worn main cutting edge can result in poor blade and/or wing cutting edge performance.

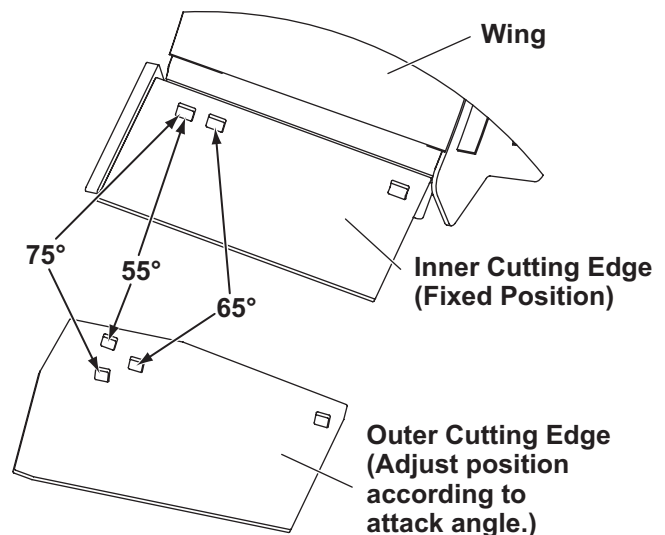
1. Park the vehicle on a smooth, level, hard surface, such as concrete. Lower the blade to the ground, and turn the control OFF. Disconnect the snowplow from the vehicle, or turn the vehicle ignition to the "OFF" position and remove the key.

It may be necessary to rest the cutting edge on a piece of wood so the blade is raised slightly off the ground.

2. **HDX™ Snowplow:** Determine the main blade attack angle by noting which holes are used for attaching the quadrant to the blade.

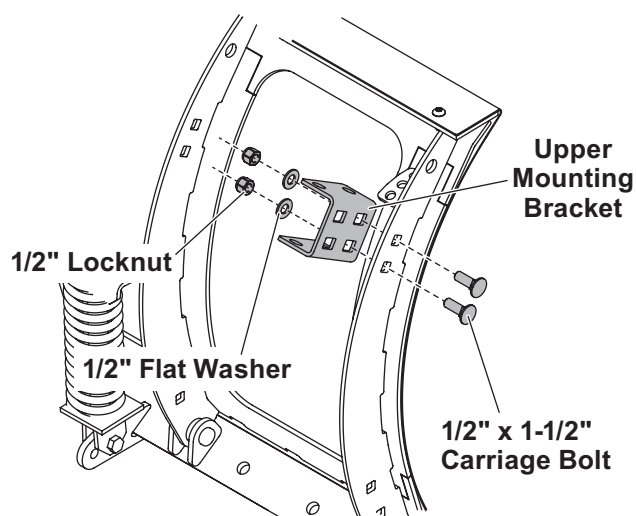


Align the holes in the cutting edges with the wing base angle holes corresponding to the blade attack angle setting.

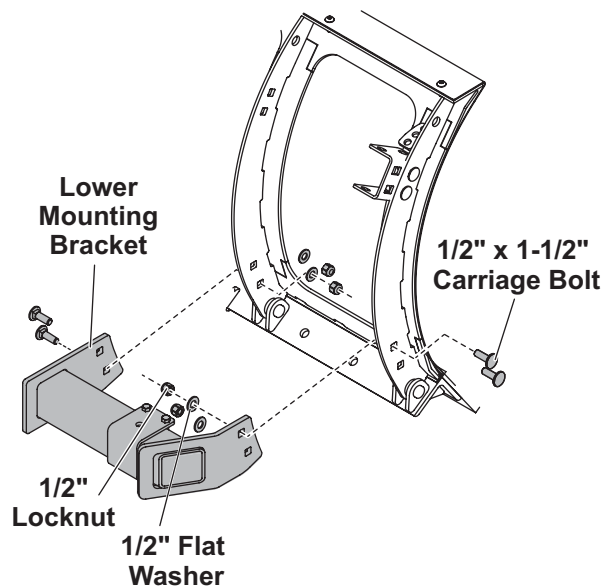


HD2™ Snowplow: Align the holes in the cutting edges with the holes in the wing base angle that correspond to the 55° attack angle setting.

3. Install the cutting edges using two 5/8" x 2" carriage bolts, 5/8" washers and 5/8" locknuts. Tighten the fasteners until finger tight.
4. Repeat Steps 2 and 3 for the other wing.
5. Align the holes in one of the upper mounting brackets with the holes in an outer blade rib. Attach the upper mounting bracket to the blade rib using two 1/2" x 1-1/2" carriage bolts, 1/2" flat washers and 1/2" locknuts. Tighten the fasteners until finger tight.



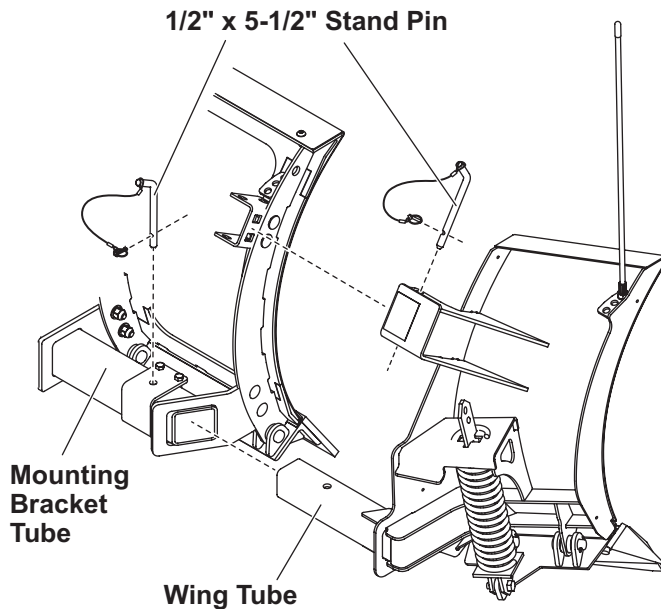
6. Align the holes in the lower mounting bracket with the holes in the lower two outside blade ribs. Install the lower wing bracket to the blade using four 1/2" x 1-1/2" carriage bolts, 1/2" flat washers and 1/2" locknuts. Tighten the fasteners until finger tight.



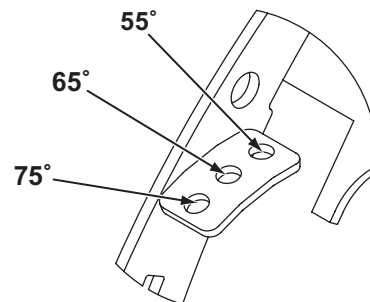
7. Insert the wing tube into the lower mounting bracket tube. Slide the wing into the tube until the stand pin holes in the wing assembly align with the corresponding holes in the mounting brackets. Install one of the 1/2" x 5-1/2" stand pins through the lower bracket hole.

Push the wing assembly tight to end of the blade and align with the upper bracket. If the pin hole between the upper bracket and wing align, insert the second 1/2" x 5-1/2" stand pin. If the holes do not align, remove the upper mounting bracket, flip the bracket 180°, and repeat this step.

Once both upper and lower brackets are aligned and the pins are installed, torque the 3/8" fasteners on the lower bracket sleeve to 31 ft-lb. Retighten as necessary.



8. Tighten the 1/2" mounting bracket fasteners to 106 ft-lb and the 5/8" cutting edge fasteners to 150 ft-lb.
9. Repeat Steps 5 through 8 for the other wing.
10. **HDX™ snowplow only:** Determine the correct blade guide installation hole according to the blade attack angle setting. Install the blade guides in the corresponding holes.



Copyright © 2016 Douglas Dynamics, LLC. All rights reserved. This material may not be reproduced or copied, in whole or in part, in any printed, mechanical, electronic, film or other distribution and storage media, without the written consent of Fisher Engineering. Authorization to photocopy items for internal or personal use by Fisher Engineering outlets or snowplow owner is granted.

Fisher Engineering reserves the right under its product improvement policy to change construction or design details and furnish equipment when so altered without reference to illustrations or specifications used. Fisher Engineering or the vehicle manufacturer may require or recommend optional equipment for snow removal. Do not exceed vehicle ratings with a snowplow. Fisher Engineering offers a limited warranty for all snowplows and accessories. See separately printed page for this important information. The following are registered (®) or unregistered (™) trademarks of Douglas Dynamics, LLC: FISHER®, HD2™, HDX™.

Printed in U.S.A.