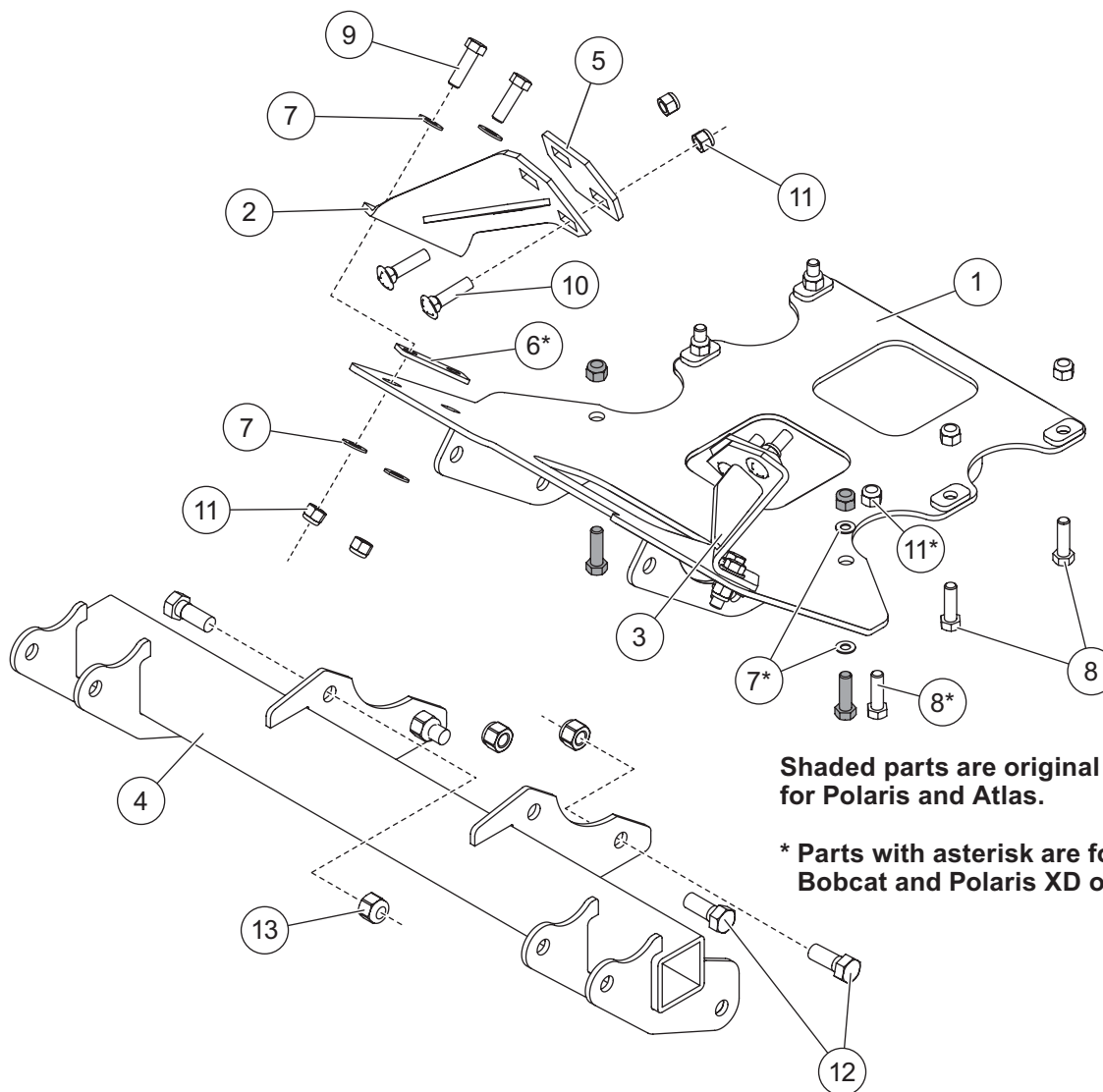


**Mount Kit** **Polaris Ranger XP 900 2012–19 /**  
**Polaris Ranger XP 1000 2016–17 / Polaris Ranger 570 Full-Sized 2014–20 /**  
**Polaris XD 2020–\_\_ / Gravely Atlas JSV 2014–\_\_ / Bobcat 3400 2015–20 35135**

March 15, 2025  
 Lit. No. 41917, Rev. 11

**PARTS LIST**



**Shaded parts are original vehicle fasteners for Polaris and Atlas.**

**\* Parts with asterisk are for Bobcat and Polaris XD only.**

35135 Mount Kit							
Item	Part	Qty	Description	Item	Part	Qty	Description
1	41913	1	Skid Plate Assembly	ns	41920	1	Bolt Bag
2	41915	1	Bracket – PS	ns	52565	1	Vehicle Cable Assembly, Long
3	41914	1	Bracket – DS	ns	52596	1	Vehicle Control Harness, UTV
4	41912	1	Mount Beam	ns	61548K	1	Plug Cover Kit
5	96571	2	Winch Plate Spacer	ns	90730	1	Fuse Kit, 200A
6	76325	2	Shim Plate				
41920 Bolt Bag							
7		16	3/8 Flat Washer	11		14	3/8-16 Hex Locknut GB
8		6	3/8-16 x 1-1/4 Hex Cap Screw G5	12		4	1/2-13 x 1-1/4 Hex Cap Screw G5
9		4	3/8-16 x 1-1/2 Hex Cap Screw G5	13		4	1/2-13 Hex Locknut GB
10		4	3/8-16 x 1-1/2 Carriage Bolt G5				
ns = not shown				G = Grade			

Copyright © 2025 Douglas Dynamics, LLC. All rights reserved. This material may not be reproduced or copied, in whole or in part, in any printed, mechanical, electronic, film, or other distribution and storage media, without the written consent of the company. Authorization to photocopy items for internal or personal use by the company's outlets or snowplow owner is granted.

The company reserves the right under its product improvement policy to change construction or design details and furnish equipment when so altered without reference to illustrations or specifications used. This equipment manufacturer or the vehicle manufacturer may require or recommend optional equipment for snow removal. Do not exceed vehicle ratings with a snowplow. The company offers a limited warranty for all snowplows and accessories. See separately printed page for this important information.

**Printed in U.S.A.**

---