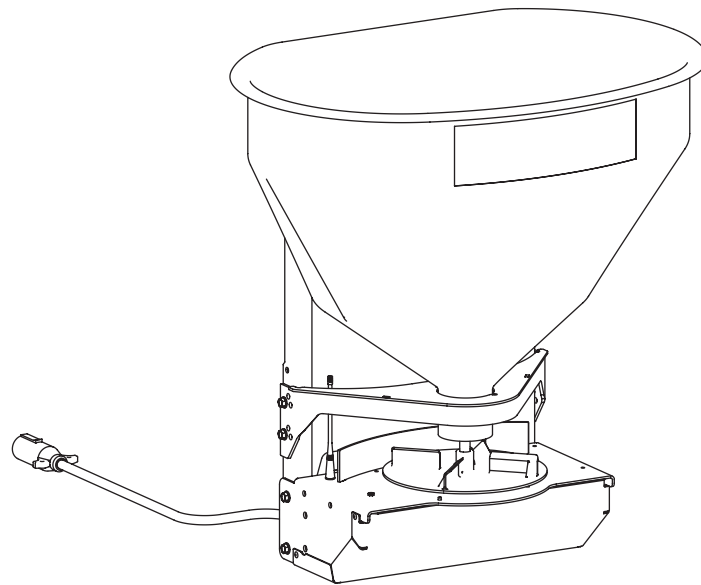




# Hopper and Drive Components

## QUICK-CASTER™ 300W Tailgate Spreader

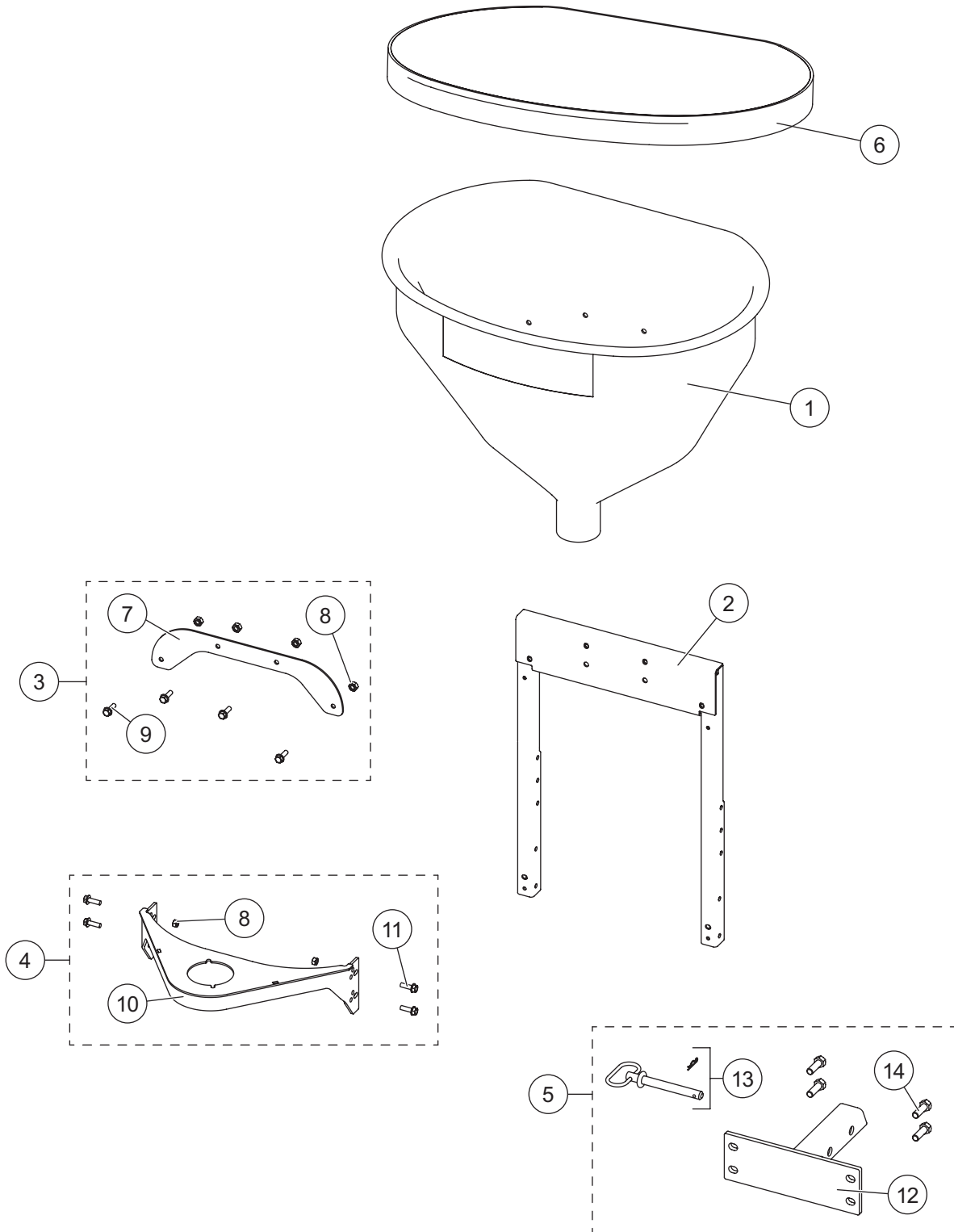
### Parts List



This Parts List is for FISHER® QUICK-CASTER 300W tailgate spreaders with serial numbers beginning with 150401 and higher.

# QUICK-CASTER™ 300W TAILGATE SPREADER

## HOPPER COMPONENTS

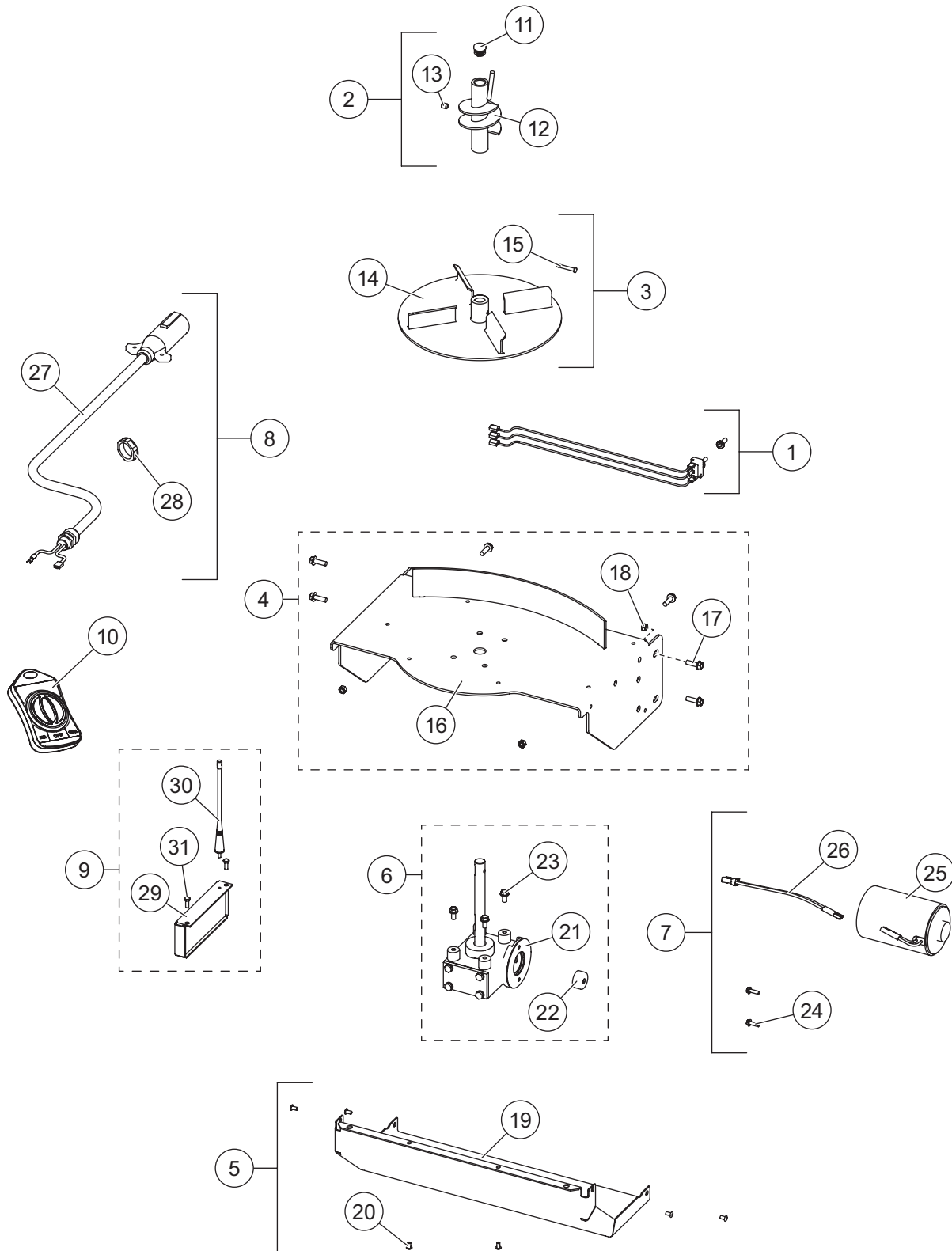


## QUICK-CASTER™ 300W TAILGATE SPREADERS

Hopper Components							
Item	Part	Qty	Description	Item	Part	Qty	Description
1	75930	1	Hopper, QUICK-CASTER 300W (yellow)	4	75617	1	Hopper Throat Kit
2	75572	1	Hopper Frame	5	75619	1	Receiver Kit
3	75570	1	Hopper Support Kit	6	WSC-020	1	Hopper Cover
				ns	75563	1	FCC Compliance Label Kit
<b>Item 3</b>		<b>75570 Hopper Support Kit</b>					
7		1	Backing Plate	9		4	5/16-18 x 1 Serrated Flange Hex Cap Screw SS
8		4	5/16-18 Serrated Flange Hex Locknut				
<b>Item 4</b>		<b>75617 Hopper Throat Kit</b>					
8		4	5/16-18 Serrated Flange Hex Locknut	11		4	5/16-18 x 1 Serrated Flange Hex Cap Screw G5
10		1	Throat Support				
<b>Item 5</b>		<b>75619 Receiver Kit</b>					
12		1	Hitch, 2" Receiver Utility	14		4	1/2-13 x 1-1/2 Hex Cap Screw G5
13	75620	1	5/8 x 5-1/2 Hitch Pin w/Hairpin Cotter				
ns = not shown				G = Grade			

# QUICK-CASTER™ 300W TAILGATE SPREADER

## QUICK-CASTER 300W DRIVE COMPONENTS





# QUICK-CASTER™ 300W TAILGATE SPREADER

---



Fisher Engineering  
50 Gordon Drive  
Rockland, ME 04841-2139  
[www.fisherplows.com](http://www.fisherplows.com)

**A DIVISION OF FISHER, LLC**

Copyright © 2023 Douglas Dynamics, LLC. All rights reserved. This material may not be reproduced or copied, in whole or in part, in any printed, mechanical, electronic, film, or other distribution and storage media, without the written consent of Fisher Engineering. Authorization to photocopy items for internal or personal use by Fisher Engineering outlets or spreader owner is granted.

Fisher Engineering reserves the right under its product improvement policy to change construction or design details and furnish equipment when so altered without reference to illustrations or specifications used. Fisher Engineering or the vehicle manufacturer may require or recommend optional equipment for spreaders. Do not exceed vehicle ratings with a spreader. Fisher Engineering offers a limited warranty for all spreaders and accessories. See separately printed page for this important information. The following are registered (®) or unregistered (™) trademarks of Douglas Dynamics, LLC: FISHER®, QUICK-CASTER™.

**Printed in U.S.A.**