



**Fisher Engineering**

50 Gordon Drive, Rockland, Maine 04841-2139 • www.fisherplows.com

**80152, 80190**

January 15, 2019  
Lit. No. 70499, Rev. 01

***SPEED»CASTER™ 525***

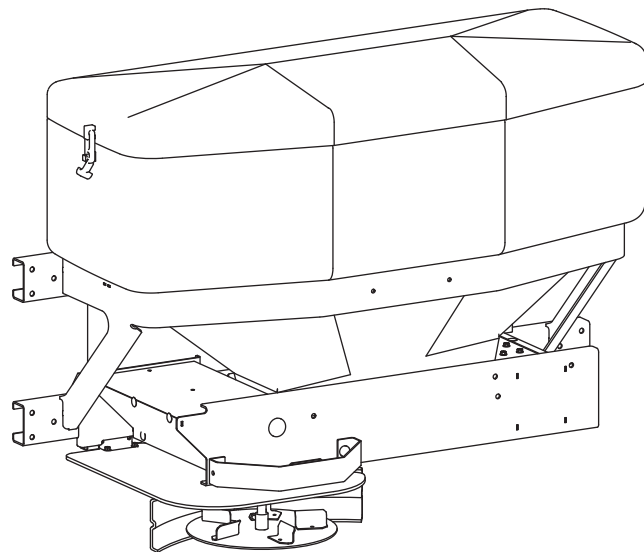
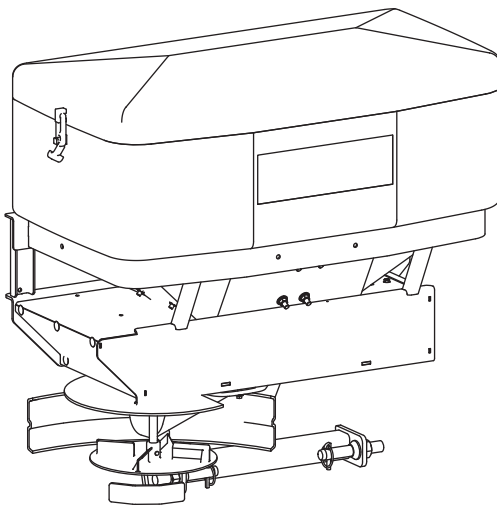
***SPEED»CASTER™ 900***

# Hopper and Drive Components

## SPEED-CASTER™ 525, SPEED-CASTER™ 900

### Low-Profile Tailgate Spreader

### Parts List

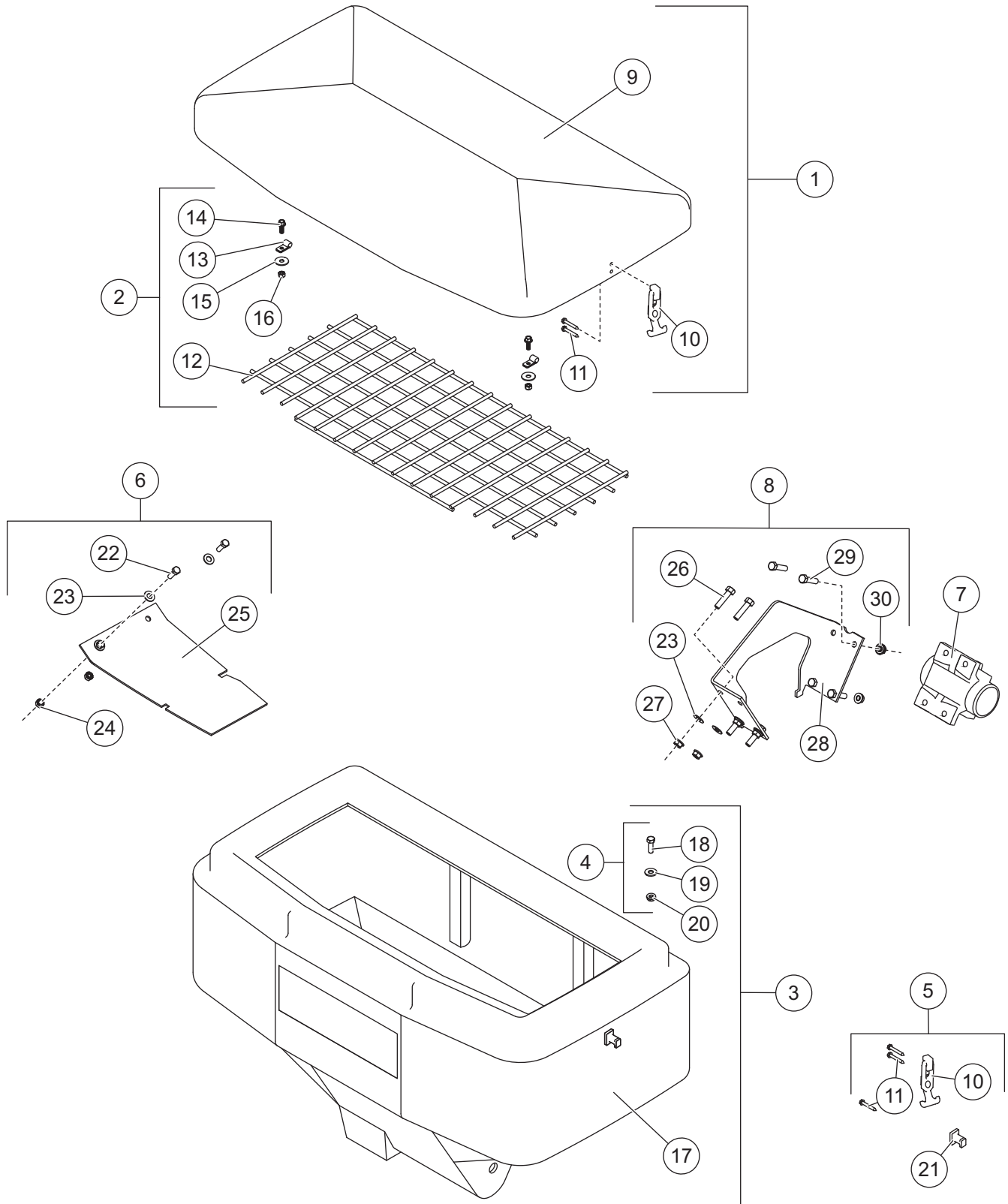


This Parts List is for FISHER® SPEED-CASTER 525 & SPEED-CASTER 900  
Low-Profile Tailgate Spreaders with serial numbers beginning with 160801 through 170503.

A DIVISION OF FISHER, LLC

# SPEED-CASTER™ 525 TAILGATE SPREADER

## HOPPER, VIBRATOR & BAFFLE



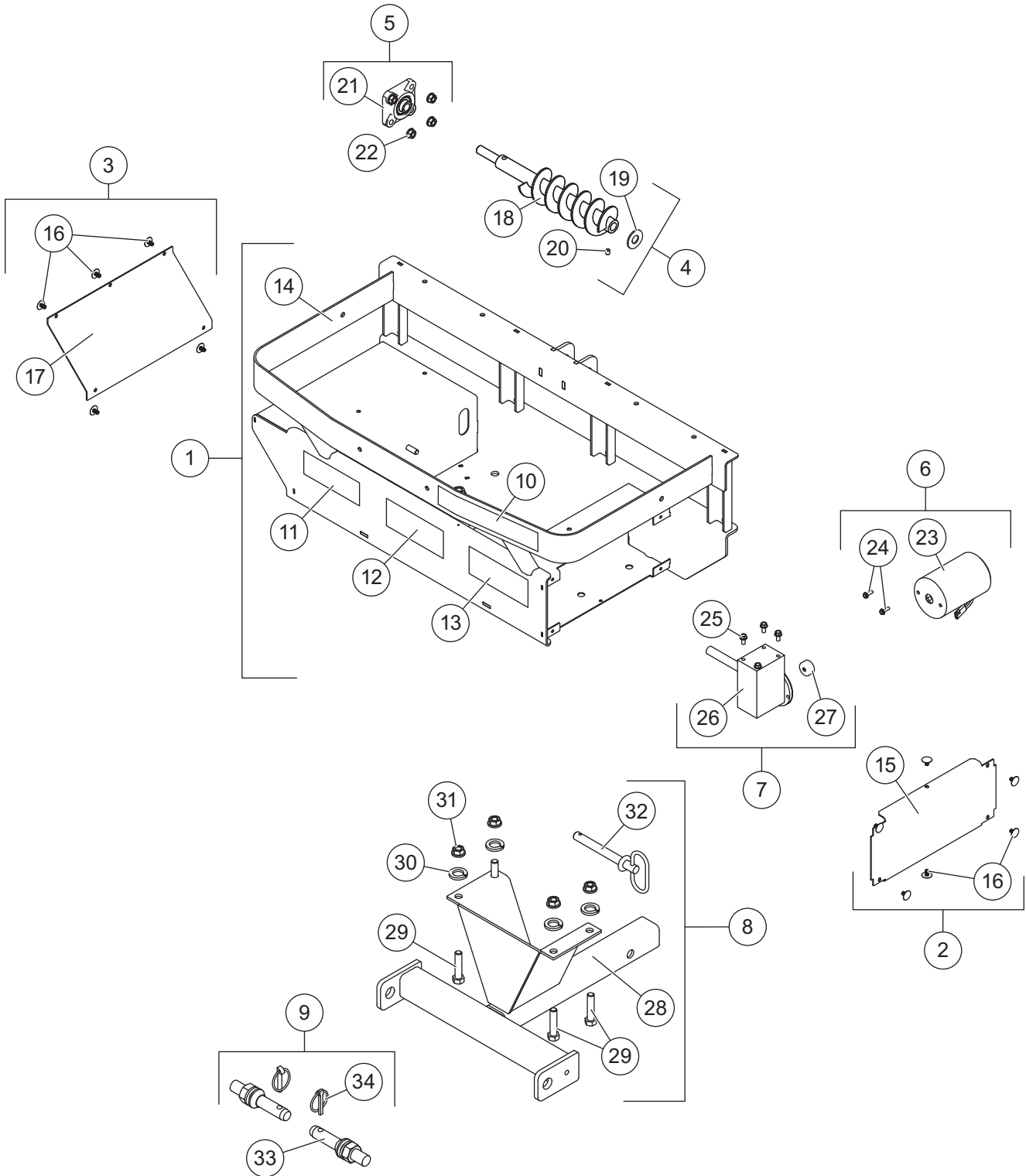
# SPEED-CASTER™ 525 TAILGATE SPREADER

<b>Hopper, Vibrator &amp; Baffle</b>							
<b>Item</b>	<b>Part</b>	<b>Qty</b>	<b>Description</b>	<b>Item</b>	<b>Part</b>	<b>Qty</b>	<b>Description</b>
1	75630	1	Lid Kit	5	75612	1	Hopper Strap Kit
2	75655	1	Top Screen Kit 30 x 14	6	75657	1	Baffle Kit
3	75907	1	Hopper Kit SPEED-CASTER 525*	7	75673	1	Vibrator, DC-80
4	75659	1	Hopper Hardware Kit	8	75658	1	Vibrator Mount Kit
<b>Item 1</b>				<b>75630 Lid Kit</b>			
9		1	Lid Assembly	11		4	#10 x 3/4 Hex Washer-Head Tapping Screw SS
10		2	Flexible Draw Latch				
<b>Item 2</b>				<b>75655 Top Screen Kit 30 x 14</b>			
12		1	Top Screen 30 x 14	15		2	1/4 x 1 Washer
13		2	5/16 Clamp	16		2	1/4 Hex Locknut SS
14		2	1/4-20 x 3/4 Hex Cap Screw Serrated Flange SS				
<b>Item 3</b>				<b>75907 Hopper Kit SPEED-CASTER 525*</b>			
4	75659	1	Hopper Hardware Kit	17		1	Hopper 5.25 ft <sup>3</sup> – Yellow
<b>Item 4</b>				<b>75659 Hopper Hardware Kit</b>			
18		4	5/16-18 x 1 Hex Cap Screw	20		4	5/16-18 Serrated Flange Nut
19		4	5/16 Flat Washer				
<b>Item 5</b>				<b>75612 Hopper Strap Kit</b>			
10		2	Flexible Draw Latch	21		2	Latch Keeper
11		6	#10 x 3/4 Hex Washer-Head Tapping Screw SS				
<b>Item 6</b>				<b>75657 Baffle Kit</b>			
22		2	5/16-18 x 1-1/4 Hex Cap Screw SS	24		2	5/16-18 Hex Locknut SS
23		2	3/8 Flat Washer SS	25		1	Material Baffle
<b>Item 8</b>				<b>75658 Vibrator Mount Kit</b>			
23		4	3/8 Flat Washer SS	28		1	Vibrator Mount Bracket
26		4	3/8-16 x 1 Hex Cap Screw SS	29		4	3/8-16 x 1-1/2 Hex Cap Screw
27		4	3/8-16 Serrated Flange Nut	30		4	3/8-16 Hex Locknut
SS = Stainless Steel							

\* Hopper ships with two latch keepers installed.

# SPEED-CASTER™ 525 TAILGATE SPREADER

## FRAME, AUGER & HITCH

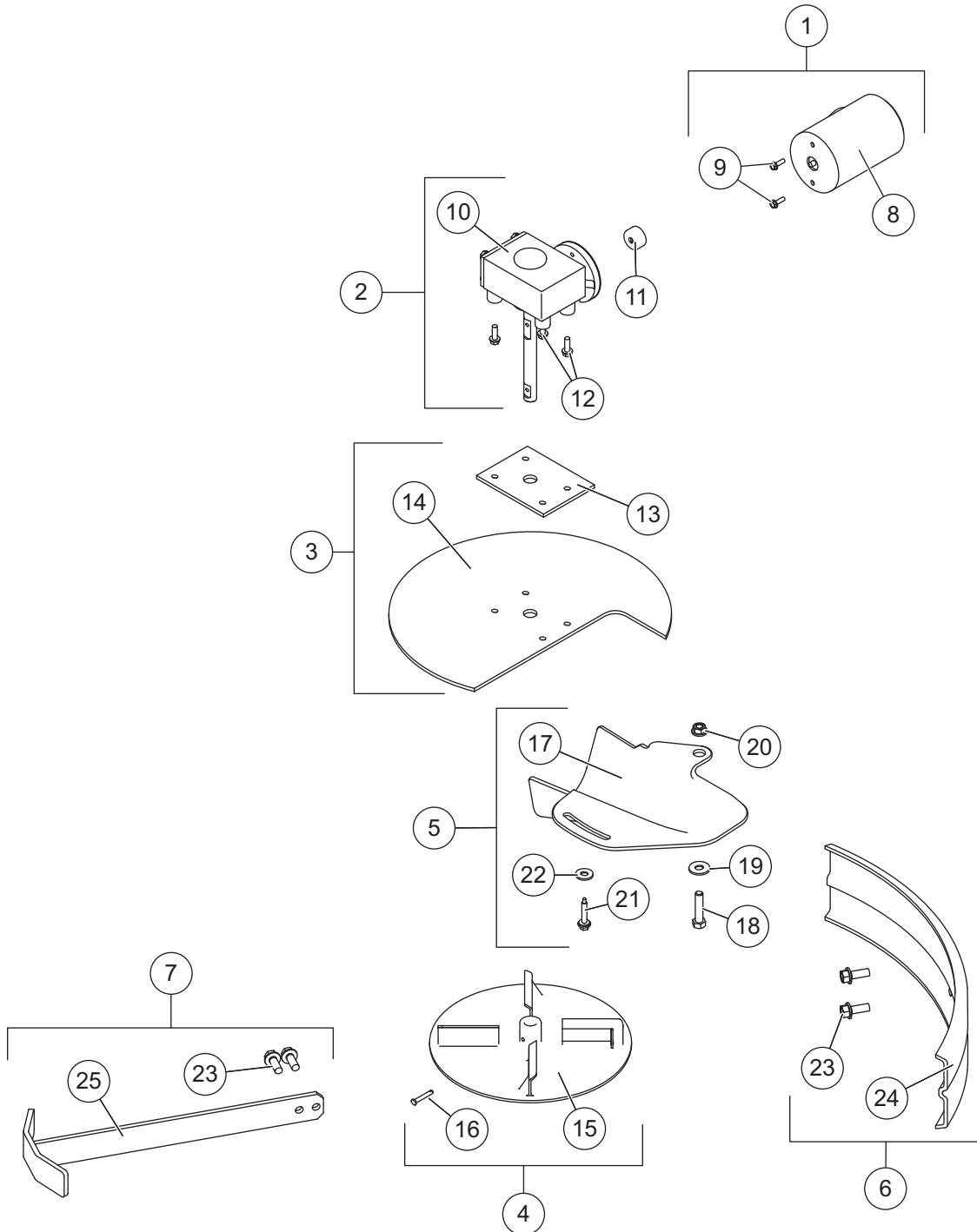


# SPEED-CASTER™ 525 TAILGATE SPREADER

<b>Frame, Auger &amp; Hitch</b>							
<b>Item</b>	<b>Part</b>	<b>Qty</b>	<b>Description</b>	<b>Item</b>	<b>Part</b>	<b>Qty</b>	<b>Description</b>
1	75903	1	Frame Kit	8	75654	1	Hitch Kit
2	75667	1	Side Cover Kit	9	75666	1	Lift Arm Pin Kit
3	75558	1	Spinner Drive Cover Kit	10	43903	1	Label – Identity, SPEED-CASTER 525
4	75661	1	Auger Kit	11	75621	1	Label – Warning, Hands and Feet
5	75660	1	Bearing Kit	12	75669	1	Label – Warning, Rotating Auger
6	75901	1	Motor Kit	13	75623	1	Label – Warning, Read Manual
7	75670	1	Auger Transmission Kit				
<b>Item 1</b>				<b>75903 Frame Kit</b>			
10	43903	1	Label – Identity, SPEED-CASTER 525	13	75623	1	Label – Warning, Read Manual
11	75621	1	Label – Warning, Hands and Feet	14		1	Main Frame
12	75669	1	Label – Warning, Rotating Auger				
<b>Item 2</b>				<b>75667 Side Cover Kit</b>			
15		1	Drive Cover	16	79334	6	1/4 x 3/4 x 1/2 Push Retainer Nylon
<b>Item 3</b>				<b>75558 Spinner Drive Cover Kit</b>			
16	79334	6	1/4 x 3/4 x 1/2 Push Retainer Nylon	17		1	Spinner Drive Cover
<b>Item 4</b>				<b>75661 Auger Kit</b>			
18		1	2-5/8 x 14 x 1-3/8 Auger	20		1	5/16-18 x 3/8 Socket Head Set Screw
19		1	5/8 Flat Washer Nylon				
<b>Item 5</b>				<b>75660 Bearing Kit</b>			
21	68662	1	5/8 Bearing 4-Bolt Flange	22		4	3/8-16 Serrated Flange Nut
<b>Item 6</b>				<b>75901 Motor Kit</b>			
23		1	Motor 12V DC, 3 x 3.8	24		2	#10-32 x 5/8 Hex Cap Screw Serrated Flange w/Patch
<b>Item 7</b>				<b>75670 Auger Transmission Kit</b>			
25		4	1/4-20 x 3/4 Hex Cap Screw Serrated Flange SS	26		1	Transmission 30:1 Worm Gear
				27	79332	1	Motor Drive Coupler
<b>Item 8</b>				<b>75654 Hitch Kit</b>			
28		1	Hitch	31		4	1/2-13 Serrated Flange Nut
29		4	1/2-13 x 1-1/2 Hex Cap Screw	32	75620	1	Hitch Pin
30		4	1/2 Split Lock Washer Zinc				
<b>Item 9</b>				<b>75666 Lift Arm Pin Kit</b>			
33		2	7/8 x 5-1/2 Lift Arm Pin	34		2	5/16 x 1-9/16 Linchpin
SS = Stainless Steel							

# SPEED-CASTER™ 525 TAILGATE SPREADER

## SPINNER ASSEMBLY & MATERIAL CHUTE

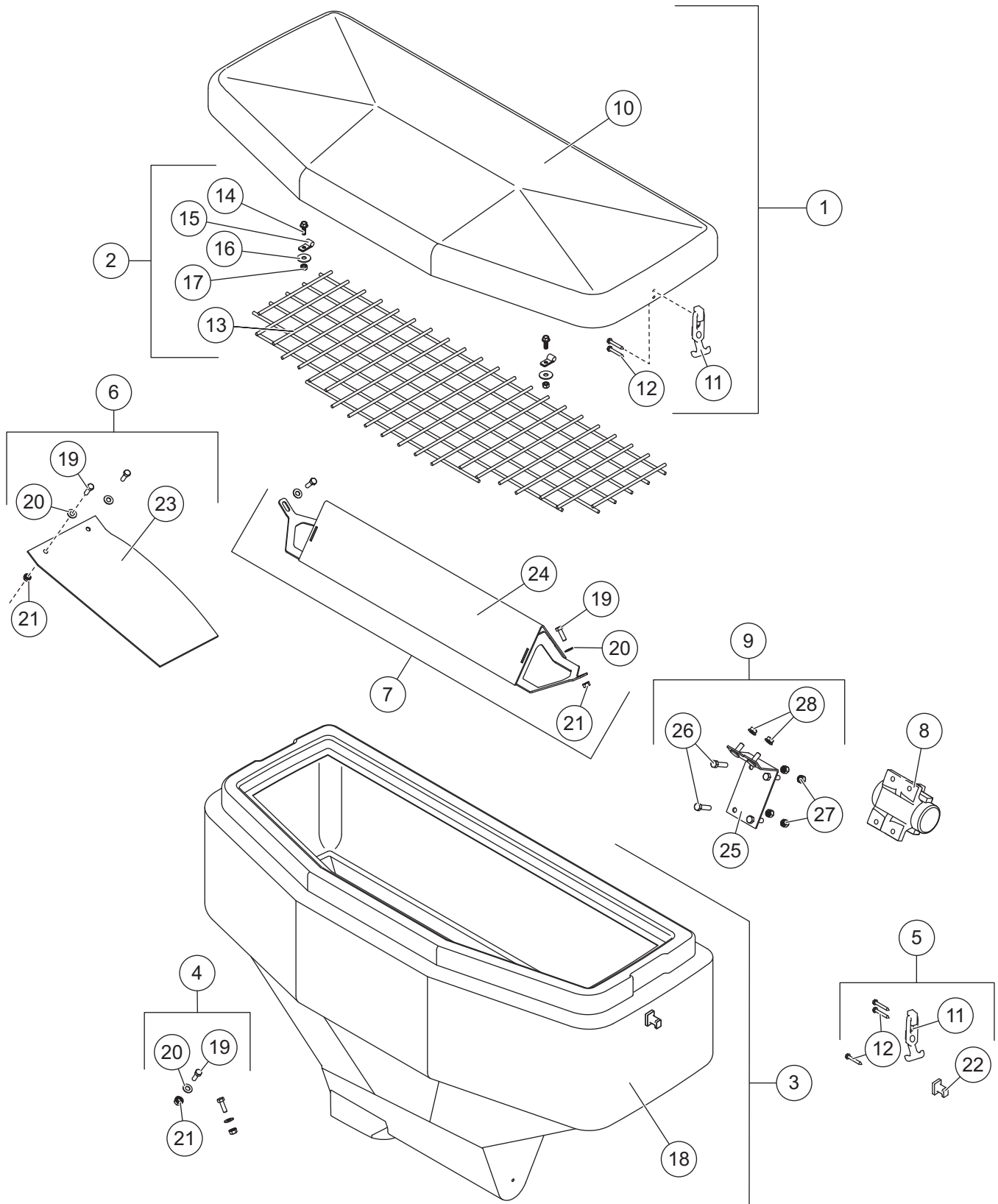


## SPEED-CASTER™ 525 TAILGATE SPREADER

<b>Spinner Assembly &amp; Material Chute</b>							
<b>Item</b>	<b>Part</b>	<b>Qty</b>	<b>Description</b>	<b>Item</b>	<b>Part</b>	<b>Qty</b>	<b>Description</b>
1	75901	1	Motor Kit	5	75662	1	Material Chute Kit
2	75640	1	Spinner Transmission Kit	6	75665	1	Deflector Kit
3	75663	1	CE Guard Kit	7	75672	1	Protector Foot Kit
4	75618	1	Spinner Kit				
<b>Item 1</b>				<b>75901 Motor Kit</b>			
8		1	Motor 12V DC, 3 x 3.8	9		2	#10-32 x 5/8 Hex Cap Screw Serrated Flange w/Patch
<b>Item 2</b>				<b>75640 Spinner Transmission Kit</b>			
10		1	Transmission 8:1 Worm Gear	12		4	1/4-20 x 3/4 Hex Cap Screw Serrated Flange SS
11	79332	1	Motor Drive Coupler				
<b>Item 3</b>				<b>75663 CE Guard Kit</b>			
13		1	CE Guard Spacer	14		1	CE Guard
<b>Item 4</b>				<b>75618 Spinner Kit</b>			
15		1	Spinner, 10" Poly	16		1	3/16 x 1-1/4 Detent Clevis Pin
<b>Item 5</b>				<b>75662 Material Chute Kit</b>			
17		1	Material Chute	20		1	1/2-13 Serrated Flange Nut
18		1	1/2-13 x 1-1/2 Hex Cap Screw	21		1	1/4 x 1-1/2 Driller w/R-M Washer
19		1	1/2 Flat Washer, Hardened	22		1	5/16 Flat Washer
<b>Item 6</b>				<b>75665 Deflector Kit</b>			
23		2	3/8-16 x 1 Hex Cap Screw Serrated Flange Type F	24		1	Deflector
<b>Item 7</b>				<b>75672 Protector Foot Kit</b>			
23		2	3/8-16 x 1 Hex Cap Screw Serrated Flange Type F	25		1	Spinner Protector Foot
SS = Stainless Steel							

# SPEED-CASTER™ 900 TAILGATE SPREADER

## HOPPER, VIBRATOR & INVERTED V





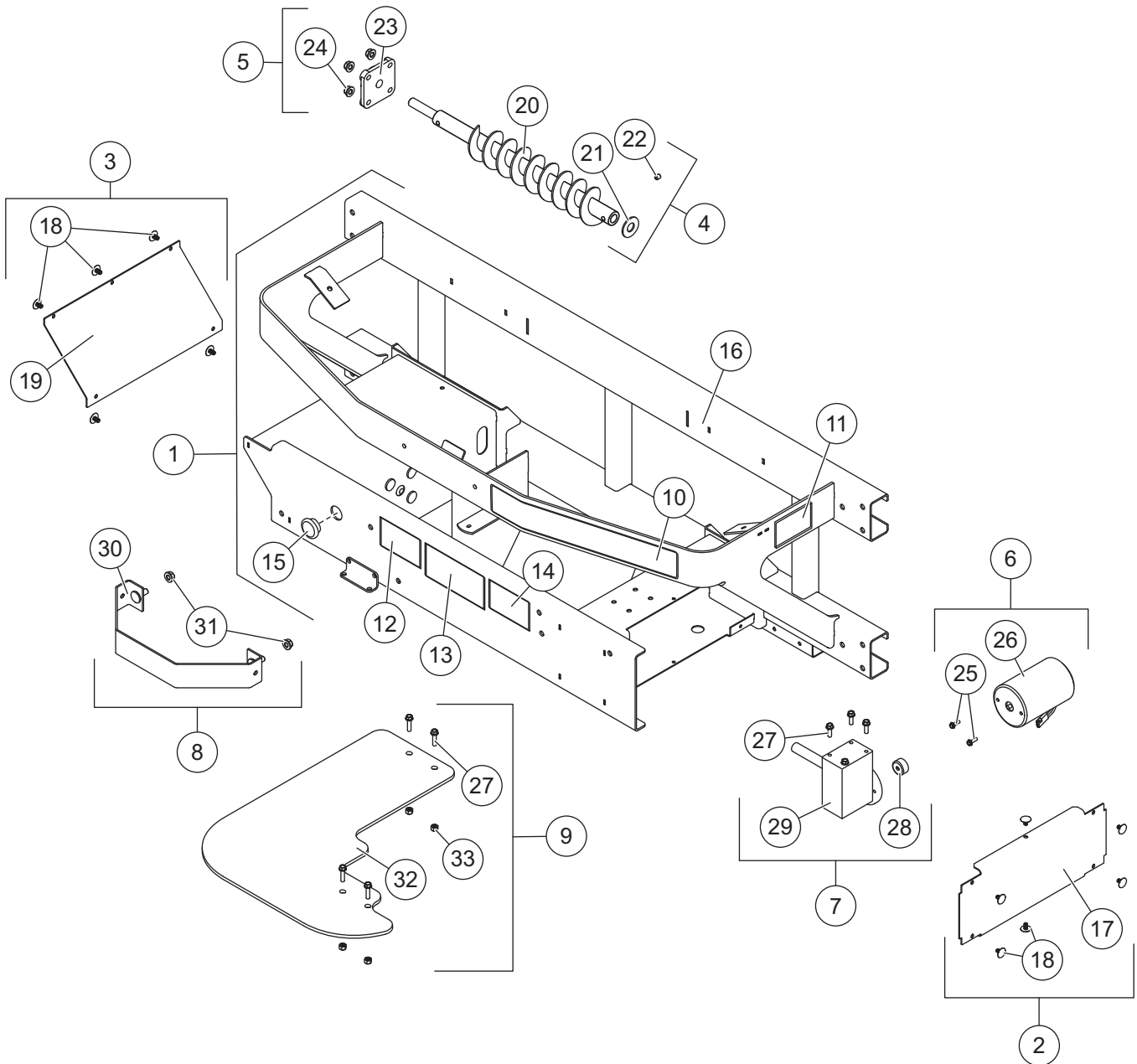
## SPEED-CASTER™ 900 TAILGATE SPREADER

<b>Hopper, Vibrator &amp; Inverted V</b>							
<b>Item</b>	<b>Part</b>	<b>Qty</b>	<b>Description</b>	<b>Item</b>	<b>Part</b>	<b>Qty</b>	<b>Description</b>
1	75677	1	Lid Kit	6	75681	1	Baffle Kit
2	75680	1	Top Screen Kit	7	75682	1	Inverted V Kit
3	75909	1	Hopper Kit SPEED-CASTER 900*	8	75673	1	Vibrator, DC-80
4	75614	1	Hopper Hardware Kit	9	75683	1	Vibrator Mount Bracket Kit
5	75612	1	Hopper Strap Kit				
<b>Item 1</b>				<b>75677 Lid Kit</b>			
10		1	Lid Assembly	12		4	#10 x 3/4 Hex Washer-Head Tapping Screw SS
11		2	Flexible Draw Latch				
<b>Item 2</b>				<b>75680 Top Screen Kit</b>			
13		1	Top Screen 40 x 44	15		2	5/16 Clamp
14		2	1/4-20 x 3/4 Hex Cap Screw Serrated Flange SS	16	D5952	2	1/4 x 1 Fender Washer SS
				17		2	1/4 Hex Locknut SS
<b>Item 3</b>				<b>75909 Hopper Kit SPEED-CASTER 900*</b>			
4	75614	1	Hopper Hardware Kit	18		1	Hopper 8.75 ft <sup>3</sup> – Yellow
<b>Item 4</b>				<b>75614 Hopper Hardware Kit</b>			
19		2	5/16-18 x 1-1/4 Hex Cap Screw SS	21		2	5/16-18 Hex Locknut SS
20		2	3/8 Flat Washer SS				
<b>Item 5</b>				<b>75612 Hopper Strap Kit</b>			
11		2	Flexible Draw Latch	22		2	Latch Keeper
12		6	#10 x 3/4 Hex Washer-Head Tapping Screw SS				
<b>Item 6</b>				<b>75681 Baffle Kit</b>			
19		2	5/16-18 x 1-1/4 Hex Cap Screw SS	21		2	5/16-18 Hex Locknut SS
20		2	3/8 Flat Washer SS	23		1	Material Baffle
<b>Item 7</b>				<b>75682 Inverted V Kit</b>			
19		2	5/16-18 x 1 Hex Cap Screw G5	21		2	5/16-18 Hex Locknut SS
20		2	3/8 Flat Washer SS	24		1	Inverted V
<b>Item 9</b>				<b>75683 Vibrator Mount Bracket Kit</b>			
25		1	Mounting Bracket, Inverted V	27		4	3/8-16 Hex Locknut
26		4	3/8-16 x 1-1/2 Hex Cap Screw	28		2	3/8-16 Hex Nut Serrated Flange
SS = Stainless Steel				G = Grade			

\* Hopper ships with two latch keepers installed.

# SPEED-CASTER™ 900 TAILGATE SPREADER

## FRAME, AUGER & SPINNER GUARD

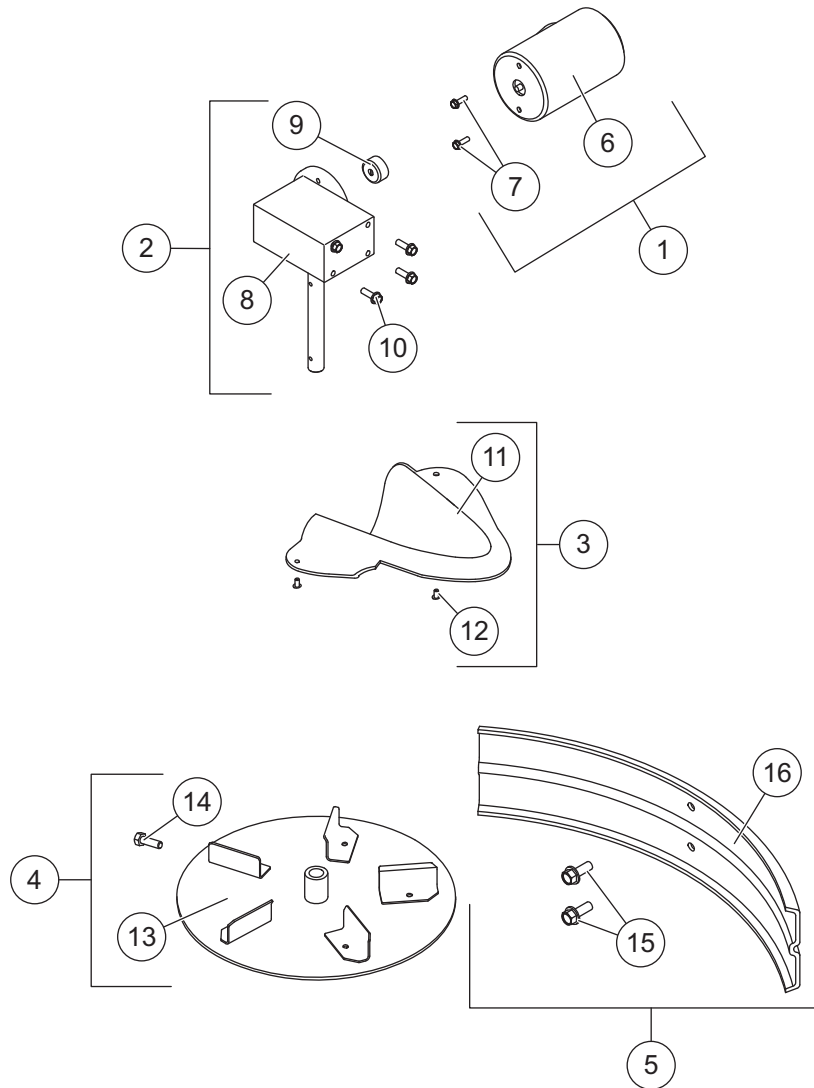


## SPEED-CASTER™ 900 TAILGATE SPREADER

<b>Frame, Auger &amp; Spinner Guard</b>							
<b>Item</b>	<b>Part</b>	<b>Qty</b>	<b>Description</b>	<b>Item</b>	<b>Part</b>	<b>Qty</b>	<b>Description</b>
1	75905	1	Frame Kit SPEED-CASTER 900	8	75688	1	Trim Ring Kit
2	75687	1	Side Cover Kit	9	75690	1	Spinner Guard Kit
3	75560	1	Spinner Drive Cover Kit	10	43902	1	Label – Identity, SPEED-CASTER 900
4	75679	1	Auger Kit	11	75694	1	Label – Warning, Never Swing Spreader
5	75660	1	Bearing Kit	12	75621	1	Label – Warning, Hands and Feet
6	75901	1	Motor Kit	13	75669	1	Label – Warning, Rotating Auger
7	75692	1	Auger Transmission Kit	14	75623	1	Label – Warning, Read Manual
<b>Item 1</b>				<b>75905 Frame Kit SPEED-CASTER 900</b>			
10	43902	1	Label – Identity, SPEED-CASTER 900	14	75623	1	Label – Warning, Read Manual
11	75694	1	Label – Warning, Never Swing Spreader	15	75689	1	Bearing Access Cover
12	75621	1	Label – Warning, Hands and Feet	16		1	Main Frame
13	75669	1	Label – Warning, Rotating Auger				
<b>Item 2</b>				<b>75687 Side Cover Kit</b>			
17		1	Drive Cover	18	79334	6	1/4 x 3/4 x 1/2 Push Retainer Nylon
<b>Item 3</b>				<b>75560 Spinner Drive Cover Kit</b>			
18	79334	6	1/4 x 3/4 x 1/2 Push Retainer Nylon	19		1	Spinner Drive Cover
<b>Item 4</b>				<b>75679 Auger Kit</b>			
20		1	2-5/8 x 20 x 1-3/8 Auger	22		1	5/16-18 x 3/8 Socket Head Set Screw
21		1	5/8 Flat Washer Nylon				
<b>Item 5</b>				<b>75660 Bearing Kit</b>			
23		1	5/8 Bearing 4-Bolt Flange	24		4	3/8-16 Serrated Flange Nut
<b>Item 6</b>				<b>75901 Motor Kit</b>			
25		2	#10-32 x 5/8 Hex Cap Screw Serrated Flange w/Patch	26		1	Motor 12V DC, 3 x 3.8
<b>Item 7</b>				<b>75692 Auger Transmission Kit</b>			
27		4	1/4-20 x 3/4 Hex Cap Screw Serrated Flange SS	28	79332	1	Motor Drive Coupler
				29		1	Transmission 20:1 Worm Gear
<b>Item 8</b>				<b>75688 Trim Ring Kit</b>			
30		1	Trim Ring	31		2	3/8-16 Hex Nut Serrated Flange
<b>Item 9</b>				<b>75690 Spinner Guard Kit</b>			
27		4	1/4-20 x 3/4 Hex Cap Screw Serrated Flange SS	32		1	Spinner Guard
				33		4	1/4-20 Locknut
SS = Stainless Steel							

# SPEED-CASTER™ 900 TAILGATE SPREADER

## SPINNER, CHUTE & DEFLECTOR

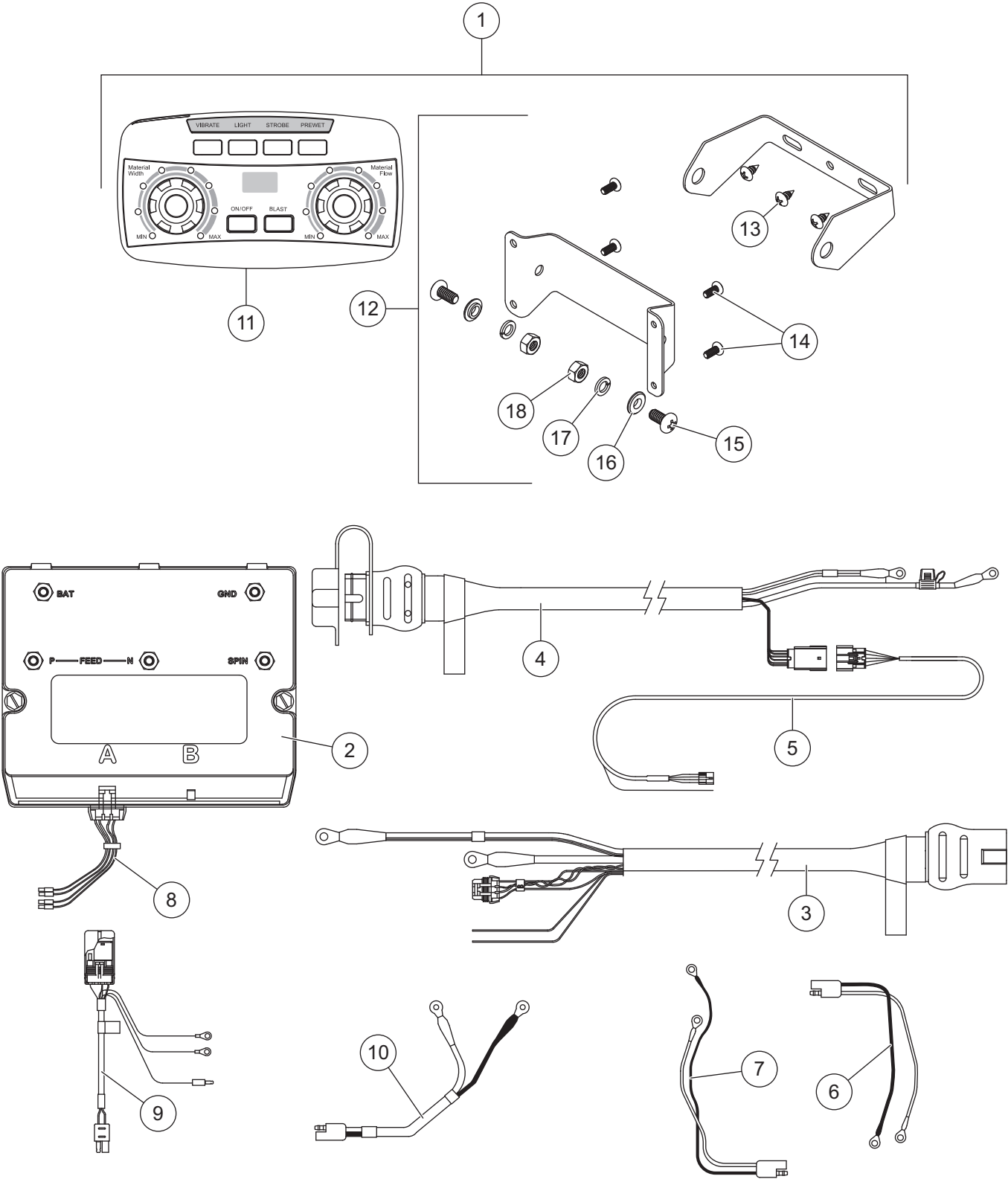


## SPEED-CASTER™ 900 TAILGATE SPREADER

<b>Spinner, Chute &amp; Deflector</b>							
<b>Item</b>	<b>Part</b>	<b>Qty</b>	<b>Description</b>	<b>Item</b>	<b>Part</b>	<b>Qty</b>	<b>Description</b>
1	75901	1	Motor Kit	4	75685	1	Spinner Kit
2	75686	1	Spinner Transmission Kit	5	75665	1	Deflector Kit
3	75691	1	Material Chute Kit				
<b>Item 1</b>				<b>75901 Motor Kit</b>			
6		1	Motor 12V DC, 3 x 3.8	7		2	#10-32 x 5/8 Cap Screw Serrated Flange SS
<b>Item 2</b>				<b>75686 Spinner Transmission Kit</b>			
8		1	Transmission 8:1 Worm Gear	10		4	1/4-20 x 3/4 Cap Screw Serrated Flange SS
9	79332	1	Motor Drive Coupler				
<b>Item 3</b>				<b>75691 Material Chute Kit</b>			
11		1	Material Chute	12		3	3/16 x 0.354 Rivet – Black Aluminum
<b>Item 4</b>				<b>75685 Spinner Kit</b>			
13		1	Spinner 12" Steel	14		1	5/16-18 x 1/2 Hex Cap Screw
<b>Item 5</b>				<b>75665 Deflector Kit</b>			
15		2	3/8-16 x 1 Hex Cap Screw Serrated Flange Type F	16		1	Deflector
SS = Stainless Steel							

# SPEED-CASTER™ 525, SPEED-CASTER™ 900 TAILGATE SPREADER

## ELECTRICAL COMPONENTS



# SPEED-CASTER™ 525, SPEED-CASTER™ 900 TAILGATE SPREADER

Electrical Components							
Item	Part	Qty	Description	Item	Part	Qty	Description
1	52440	1	Spreader Control Kit	7	78399	1	Spinner Motor Harness Rev Pin-Out (900)
2	52375	1	Spreader Module, 5-Post	8	69893	1	10-Pin Connector w/4 Wires
3	72092	1	Spreader Harness, 7-Pin	9	78382	1	Vibrator Harness Assembly
4	72090	1	Vehicle Harness, 7-Pin	10	78397	1	Auger Motor Harness
5	69902	1	Vehicle Control Harness				
6	78398	1	Spinner Motor Harness (525)				
<b>Item 1</b>				<b>52440 Spreader Control Kit</b>			
11	52442	1	Spreader Control	15		2	1/4-20 x 1/2 Pan Head Machine Screw SS – Black
12	52345	1	Control Bracket Kit	16		2	1/4 Shoulder Washer SS – Black
13		3	#10 x 3/8 Pan Head Tapping Screw SS	17		2	1/4 Lock Washer SS
14		4	#8 x 3/8 Pan Head Machine Screw	18		2	1/4-20 Hex Nut G5 – Black
SS = Stainless Steel				G = Grade			

# SPEED-CASTER™ 525, SPEED-CASTER™ 900 TAILGATE SPREADER

---



Fisher Engineering  
50 Gordon Drive  
Rockland, ME 04841-2139  
[www.fisherplows.com](http://www.fisherplows.com)

**A DIVISION OF FISHER, LLC**

Copyright © 2019 Douglas Dynamics, LLC. All rights reserved. This material may not be reproduced or copied, in whole or in part, in any printed, mechanical, electronic, film, or other distribution and storage media, without the written consent of Fisher Engineering. Authorization to photocopy items for internal or personal use by Fisher Engineering outlets or spreader owner is granted.

Fisher Engineering reserves the right under its product improvement policy to change construction or design details and furnish equipment when so altered without reference to illustrations or specifications used. Fisher Engineering or the vehicle manufacturer may require or recommend optional equipment for spreaders. Do not exceed vehicle ratings with a spreader. Fisher Engineering offers a limited warranty for all spreaders and accessories. See separately printed page for this important information. The following are registered (®) or unregistered (™) trademarks of Douglas Dynamics, LLC: FISHER®, SPEED-CASTER™ 525, SPEED-CASTER™ 900.

**Printed in U.S.A.**