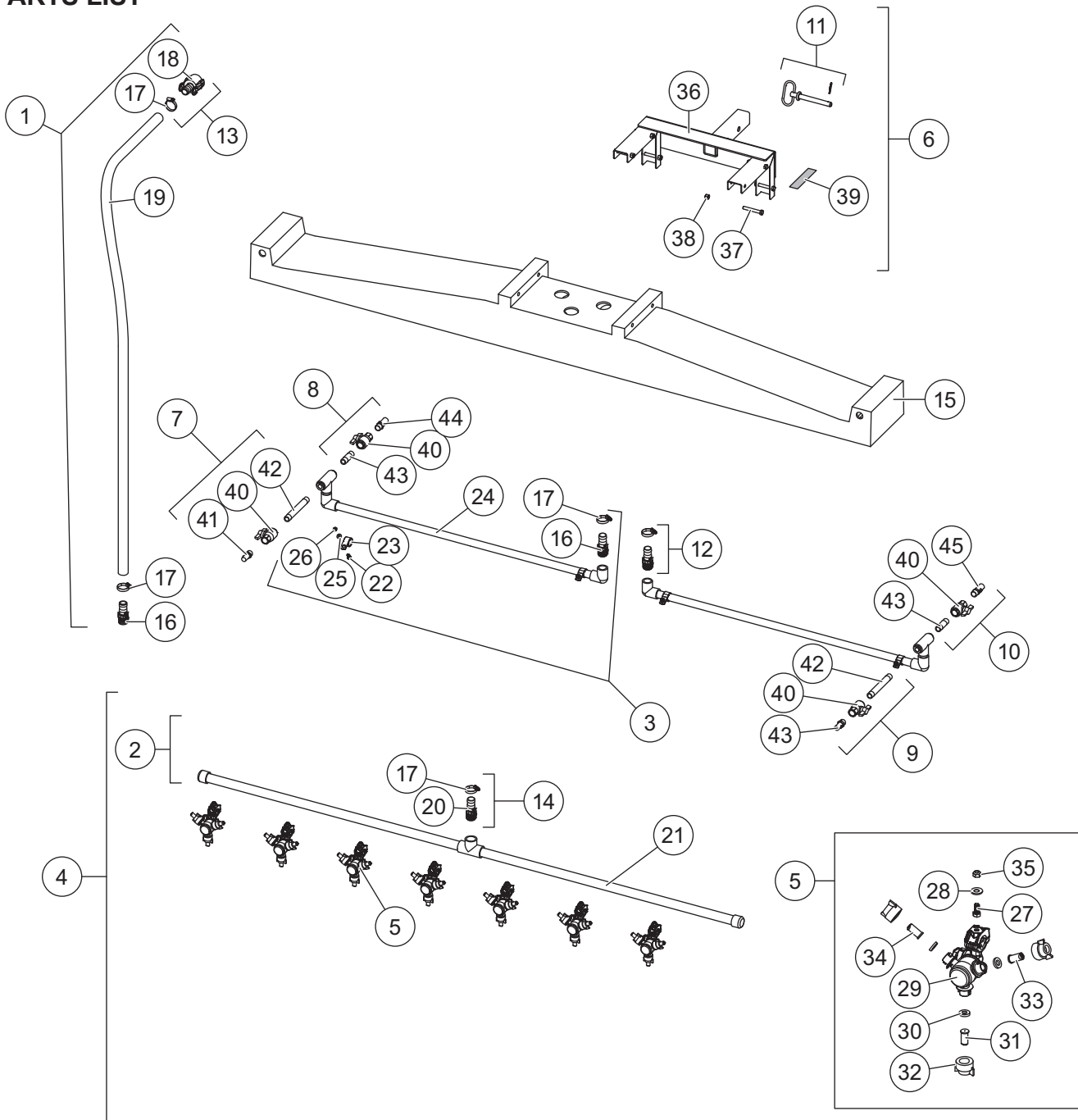


Spray Boom Assembly

Liqui Maxx™ Sprayer Systems

PARTS LIST



PBA-300-1

PBA-300-1 Spray Boom Assembly							
Item	Part	Qty	Description	Item	Part	Qty	Description
1	76169-1	3	Boom Hose Kit, 1 x 78	12	76182	2	Hose Barb Kit, 3/4 NPT x 1
2	76171	1	Spray Pipe, Center	13	76183	3	Quick-Connect Kit, 1 x 1
3	76172	2	Spray Pipe, Outside Lane	14	76184	1	Hose Barb Kit, 1 NPT x 1
4	76173	1	Center Spray Pipe Assy w/Nozzles	15	F51643	1	Poly Boom Cover, Yellow
5	76174-1	8	Nozzle Assembly, Triple-Stream	ns	78462	1	White Nozzle Kit, 8 (0.8 GPM)
6	76175	1	Hitch Kit, PBA Series 2	ns	78463†	1	Gray Nozzle Kit, 8 (10968, 0.6 GPM)
7	76176	1	Low Speed Nozzle Kit, DS	ns	78464	1	Brown Nozzle Kit, 8 (10969, 0.5 GPM)
8	76177	1	High Speed Nozzle Kit, DS	ns	78524	1	Green Nozzle Kit, 8 (F51664, 1.5 GPM)
9	76178	1	Low Speed Nozzle Kit, PS	ns	78523†	1	Blue Nozzle Kit, 8 (F51663, 1.0 GPM)
10	76179	1	High Speed Nozzle Kit, PS	ns	78499†	1	Black Nozzle Kit, 8 (F51661, 2.0 GPM)
11	75620	1	Hitch Pin Kit, 5/8 x 5-1/2				
Item 1				76169-1 Boom Hose Kit, 1 x 78			
16		1	3/4 NPT x 1 Hose Barb	18		1	1" Female Coupler x 1 HB
17		2	11/16 x 1-1/2 Band Clamp	19		78	Hose, 1" EPDM Black
Item 2				76171 Spray Pipe, Center			
17		1	11/16 x 1-1/2 Band Clamp	21		1	Main Spray Bar
20		1	1 NPT x 1 Hose Barb				
Item 3				76172 Spray Pipe, Outside Lane			
16		1	3/4 NPT x 1 Hose Barb	23		2	1" Clamp, Rubber Coated
17		1	11/16 x 1-1/2 Band Clamp	24		1	Feed Pipe, Outside Lane
22		2	1/4-20 x 3/4 Hex Cap Screw SS Serrated Flange	25		2	1/4 Flat Washer SS
				26		2	1/4-20 Hex Locknut SS
Item 4				76173 Center Spray Pipe Assembly w/Nozzles			
5	76174-1	8	Nozzle Assembly, Triple-Stream, 0.5, 0.8, 1.5 GPM	20		1	1 NPT x 1 Hose Barb
17		1	11/16 x 1-1/2 Band Clamp	21		1	Main Spray Bar
Item 5				76174-1 Nozzle Assembly, Triple-Stream			
27		1	5/16-18 x 3/4 Hex Cap Screw SS	32	F51662	3	Spray Tip Cap, Black Nylon
28		1	3/8 Flat Washer SS	33	D5234	1	Triple Stream Nozzle, 0.8 GPM, White
29	D6939	1	Triple Rotary Nozzle Body	34	F51664	1	Spray Nozzle, 1.5 GPM, Green
30	D6961	3	Nozzle Seat Gasket	35		1	5/16-18 Hex Locknut SS
31	10969	1	Spray Nozzle, 0.5 GPM, Brown				
ns = not shown				SS = Stainless Steel			

† = Accessory Only

PBA-300-1 Spray Boom Assembly (continued)							
Item	Part	Qty	Description	Item	Part	Qty	Description
Item 6				76175 Hitch Kit, PBA Series 2			
11	75620	1	5/8 x 5-1/2 Hitch Pin	38		6	3/8-16 Hex Locknut
36		1	Hitch Mount	39	10829	1	Label – Boom Height
37		6	3/8-16 x 2-3/4 Hex Cap Screw SS				
Item 7				76176 Low Speed Nozzle Kit, DS			
40		1	1/2 PVC Utility Ball Valve	42		1	1/2 x 6 Nipple, Sch 80
41		1	XP Boomjet Nozzle, DS				
Item 8				76177 High Speed Nozzle Kit, DS			
40		1	1/2 PVC Utility Ball Valve	44		1	XP Boomjet Nozzle, White DS
43		1	1/2 x 2-1/2 Nipple, Sch 80				
Item 9				76178 Low Speed Nozzle Kit, PS			
40		1	1/2 PVC Utility Ball Valve	43		1	XP Boomjet Nozzle, Red PS
42		1	1/2 x 6 Nipple, Sch 80				
Item 10				76179 High Speed Nozzle Kit, PS			
40		1	1/2 PVC Utility Ball Valve	45		1	XP Boomjet Nozzle, White PS
43		1	1/2 x 2-1/2 Nipple, Sch 80				
SS = Stainless Steel							

INSTALLATION INSTRUCTIONS

⚠ WARNING

Do not exceed GVWR or GAWR ratings as found on the driver-side vehicle door cornerpost.

⚠ CAUTION

Read this document before installing the Spray Boom Assembly Kit.

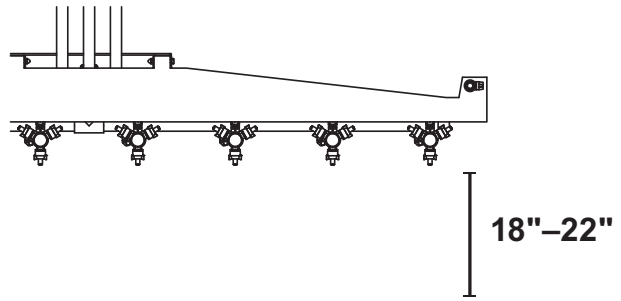
⚠ CAUTION

Use standard methods and practices when attaching sprayer and installing accessories, including proper personal protective safety equipment.

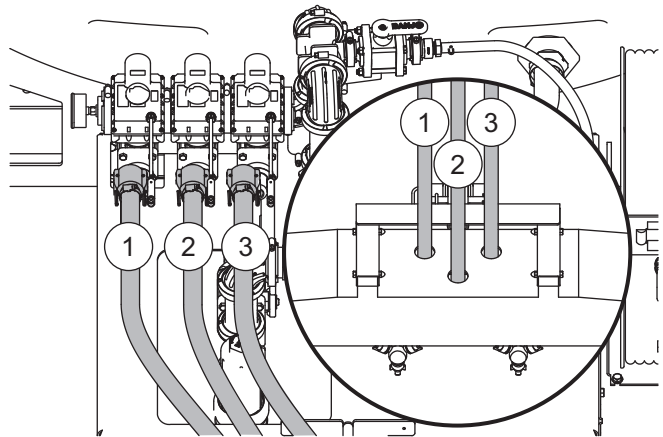
⚠ CAUTION

Ensure nozzles have minimum 18 inches ground clearance. Low boom heights can cause accidental breakage from curbs, uneven surfaces, and other obstacles. Adjustment may require optional BRM-175 Adjustable Boom Mount.

1. Attach boom and sprayer to truck per the Installation Instructions
2. Attach the boom to the optional Adjustable Boom Receiver Mount BRM-175 or vehicle trailer hitch.
3. Install the boom so the nozzles measure 18"-22" from ground to nozzle tip. This is to prevent damage and ensure optimal performance. Consider using the optional BRM-175 Adjustable Boom Receiver Mount if the tips of the nozzles lie outside this zone when using the stock receiver hitch.



4. To accommodate for differences in boom-to-valve measurements, the spray boom feed hoses must be cut to length and quick-connectors attached.
5. Fit hoses up to the spray valves. Mark and cut to length. The hose should curve gently down to the spray boom so they will not kink when filled with liquid.
6. Attach quick-connectors to the hoses and connect each hose to its corresponding valve.
7. Attach the boom hoses from the control valves to the boom.



Copyright © 2017 Douglas Dynamics, LLC. All rights reserved. This material may not be reproduced or copied, in whole or in part, in any printed, mechanical, electronic, film, or other distribution and storage media, without the written consent of TrynEx International, LLC. Authorization to photocopy items for internal or personal use by TrynEx International, LLC, outlets or sprayer owner is granted.

TrynEx International, LLC, reserves the right under its product improvement policy to change construction or design details and furnish equipment when so altered without reference to illustrations or specifications used. TrynEx International, LLC, or the vehicle manufacturer may require or recommend optional equipment for snow and ice removal. Do not exceed vehicle ratings with a sprayer. TrynEx International, LLC, offers a limited warranty for all sprayer and accessories. See separately printed page for this important information. The following are registered (®) or unregistered (™) trademarks of Douglas Dynamics, LLC: Liqui Maxx™, SnowEx®.

Printed in U.S.A.